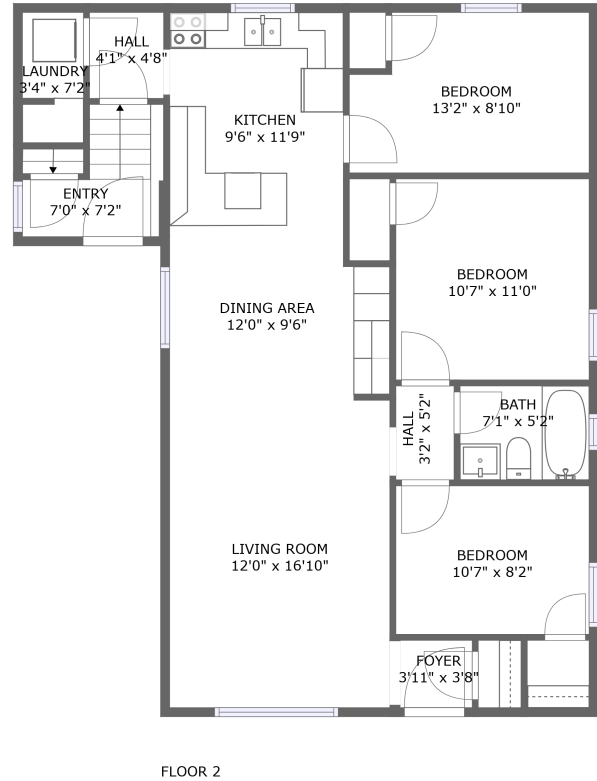
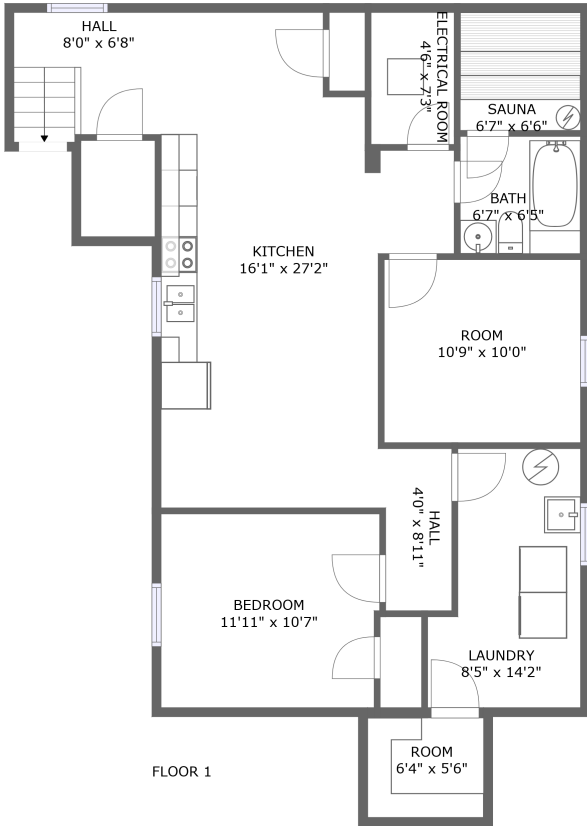


# 215 Federal Street, Eastdale, Stoney Creek, Ontario, Canada, L8E 1P2



## Property Summary



**2** floors



**4** bedrooms



**2** bathrooms



**2,117** total sqft

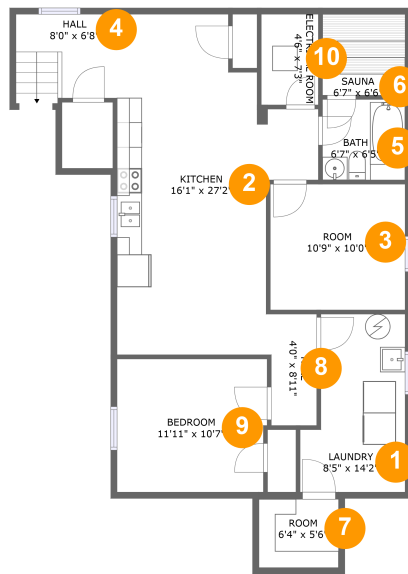


**0** garages



**2,038** Gross Living Area sqft

# 215 Federal Street, Eastdale, Stoney Creek, Ontario, Canada, L8E 1P2



## Room Dimensions

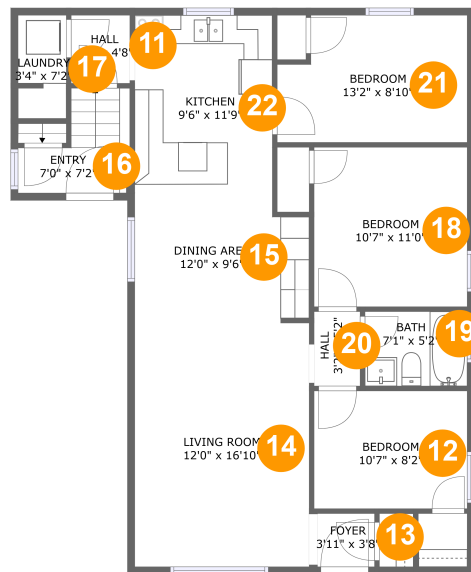
Floor 1

Total sqft: 1071

Living area: 992

#	Room name	Dimensions	Area (sqft)	Counted as Living Area
1	Laundry	8'5" x 14'2"	104 sq. ft	Yes
2	Kitchen	16'1" x 27'2"	330 sq. ft	Yes
3	Room	10'9" x 10'0"	108 sq. ft	Yes
4	Hall	8'0" x 6'8"	55 sq. ft	Yes
5	Bath	6'7" x 6'5"	42 sq. ft	Yes
6	Sauna	6'7" x 6'6"	43 sq. ft	Yes
7	Room	6'4" x 5'6"	35 sq. ft	No
8	Hall	4'0" x 8'11"	34 sq. ft	Yes
9	Bedroom	11'11" x 10'7"	126 sq. ft	Yes
10	Electrical Room	4'6" x 7'3"	33 sq. ft	No

# 215 Federal Street, Eastdale, Stoney Creek, Ontario, Canada, L8E 1P2



## Room Dimensions

Floor 2

Total sqft: 1046

Living area: 1046

#	Room name	Dimensions	Area (sqft)	Counted as Living Area
11	Hall	4'1" x 4'8"	19 sq. ft	Yes
12	Bedroom	10'7" x 8'2"	86 sq. ft	Yes
13	Foyer	3'11" x 3'8"	15 sq. ft	Yes
14	Living Room	12'0" x 16'10"	203 sq. ft	Yes
15	Dining Area	12'0" x 9'6"	109 sq. ft	Yes
16	Entry	7'0" x 7'2"	40 sq. ft	Yes
17	Laundry	3'4" x 7'2"	23 sq. ft	Yes
18	Bedroom	10'7" x 11'0"	117 sq. ft	Yes
19	Bath	7'1" x 5'2"	36 sq. ft	Yes
20	Hall	3'2" x 5'2"	16 sq. ft	Yes
21	Bedroom	13'2" x 8'10"	108 sq. ft	Yes

Scan captured on Mon, 13 May 2024 19:00:03 GMT

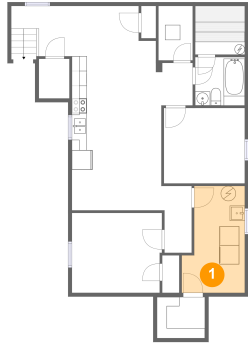
Information is calculated by CubiCasa technology; deemed highly reliable but not guaranteed.

**215 Federal Street, Eastdale, Stoney Creek,  
Ontario, Canada, L8E 1P2**

#	Room name	Dimensions	Area (sqft)	Counted as Living Area
22	Kitchen	9'6" x 11'9"	112 sq. ft	Yes

# 215 Federal Street, Eastdale, Stoney Creek, Ontario, Canada, L8E 1P2

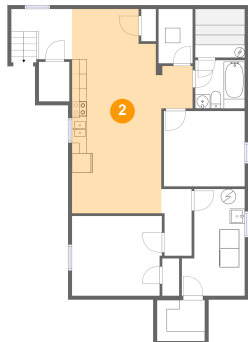
## 1 Floor 1 - Laundry



**Dimensions:** 8'5" x 14'2"  
**Area:** 104 sq. ft  
**Counted as Living Area:**  
Yes

**Heated:** Yes  
**Finished:** Yes  
**Enclosed:** Yes  
**Contiguous:**  
Yes  
**Permitted:** Yes  
**Wet Space:** No  
**Addition:** No  
**Conversion:** No

## 2 Floor 1 - Kitchen

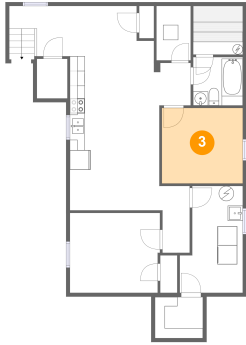


**Dimensions:** 16'1" x 27'2"  
**Area:** 330 sq. ft  
**Counted as Living Area:**  
Yes

**Heated:** Yes  
**Finished:** Yes  
**Enclosed:** Yes  
**Contiguous:**  
Yes  
**Permitted:** Yes  
**Wet Space:** No  
**Addition:** No  
**Conversion:** No

# 215 Federal Street, Eastdale, Stoney Creek, Ontario, Canada, L8E 1P2

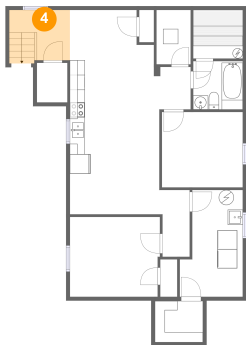
## 3 Floor 1 - Room



Dimensions: 10'9" x 10'0"  
Area: 108 sq. ft  
Counted as Living Area:  
Yes

Heated: Yes  
Finished: Yes  
Enclosed: Yes  
Contiguous:  
Yes  
Permitted: Yes  
Wet Space: No  
Addition: No  
Conversion: No

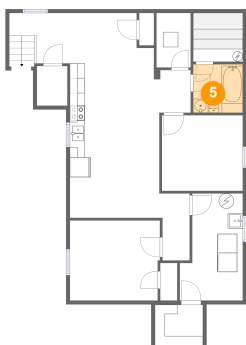
## 4 Floor 1 - Hall



Dimensions: 8'0" x 6'8"  
Area: 55 sq. ft  
Counted as Living Area:  
Yes

Heated: Yes  
Finished: Yes  
Enclosed: Yes  
Contiguous:  
Yes  
Permitted: Yes  
Wet Space: No  
Addition: No  
Conversion: No

## 5 Floor 1 - Bath

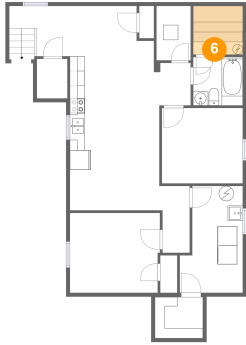


Dimensions: 6'7" x 6'5"  
Area: 42 sq. ft  
Counted as Living Area:  
Yes

Heated: Yes  
Finished: Yes  
Enclosed: Yes  
Contiguous:  
Yes  
Permitted: Yes  
Wet Space: Yes  
Addition: No  
Conversion: No

# 215 Federal Street, Eastdale, Stoney Creek, Ontario, Canada, L8E 1P2

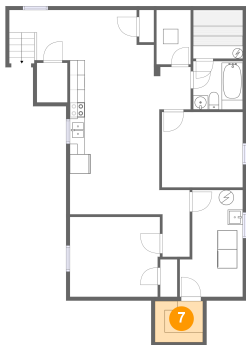
## 6 Floor 1 - Sauna



Dimensions: 6'7" x 6'6"  
Area: 43 sq. ft  
Counted as Living Area:  
Yes

Heated: Yes  
Finished: Yes  
Enclosed: Yes  
Contiguous:  
Yes  
Permitted: Yes  
Wet Space: No  
Addition: No  
Conversion: No

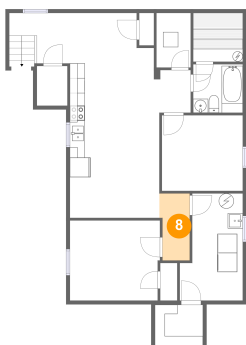
## 7 Floor 1 - Room



Dimensions: 6'4" x 5'6"  
Area: 35 sq. ft  
Counted as Living Area: No

Heated: Yes  
Finished: No  
Enclosed: Yes  
Contiguous: Yes  
Permitted: Yes  
Wet Space: No  
Addition: No  
Conversion: No

## 8 Floor 1 - Hall

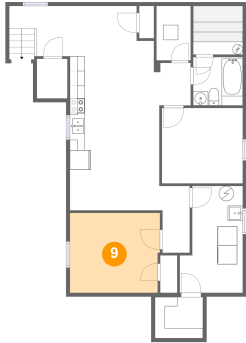


Dimensions: 4'0" x 8'11"  
Area: 34 sq. ft  
Counted as Living Area:  
Yes

Heated: Yes  
Finished: Yes  
Enclosed: Yes  
Contiguous:  
Yes  
Permitted: Yes  
Wet Space: No  
Addition: No  
Conversion: No

# 215 Federal Street, Eastdale, Stoney Creek, Ontario, Canada, L8E 1P2

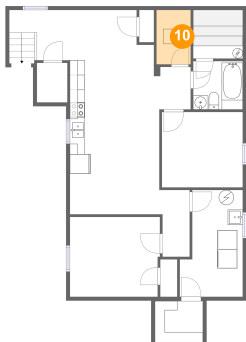
## 9 Floor 1 - Bedroom



Dimensions: 11'11" x 10'7"  
Area: 126 sq. ft  
Counted as Living Area:  
Yes

Heated: Yes  
Finished: Yes  
Enclosed: Yes  
Contiguous:  
Yes  
Permitted: Yes  
Wet Space: No  
Addition: No  
Conversion: No

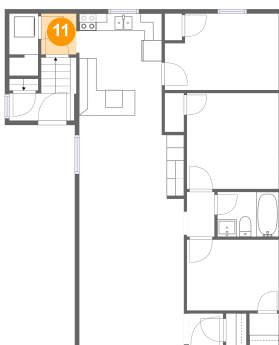
## 10 Floor 1 - Electrical Room



Dimensions: 4'6" x 7'3"  
Area: 33 sq. ft  
Counted as Living Area: No

Heated: No  
Finished: No  
Enclosed: Yes  
Contiguous: Yes  
Permitted: Yes  
Wet Space: No  
Addition: No  
Conversion: No

## 11 Floor 2 - Hall



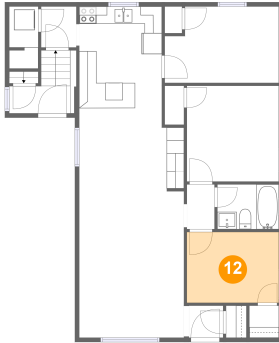
Dimensions: 4'1" x 4'8"  
Area: 19 sq. ft  
Counted as Living Area:  
Yes

Heated: Yes  
Finished: Yes  
Enclosed: Yes  
Contiguous:  
Yes  
Permitted: Yes  
Wet Space: No  
Addition: No  
Conversion: No



# 215 Federal Street, Eastdale, Stoney Creek, Ontario, Canada, L8E 1P2

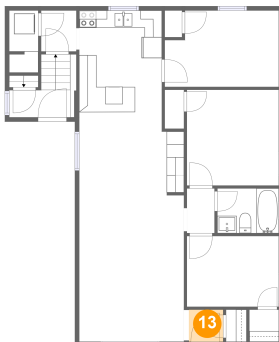
## 12 Floor 2 - Bedroom



Dimensions: 10'7" x 8'2"  
Area: 86 sq. ft  
Counted as Living Area:  
Yes

Heated: Yes  
Finished: Yes  
Enclosed: Yes  
Contiguous:  
Yes  
Permitted: Yes  
Wet Space: No  
Addition: No  
Conversion: No

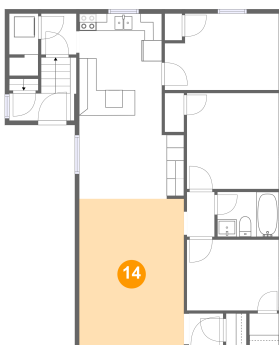
## 13 Floor 2 - Foyer



Dimensions: 3'11" x 3'8"  
Area: 15 sq. ft  
Counted as Living Area:  
Yes

Heated: Yes  
Finished: Yes  
Enclosed: Yes  
Contiguous:  
Yes  
Permitted: Yes  
Wet Space: No  
Addition: No  
Conversion: No

## 14 Floor 2 - Living Room

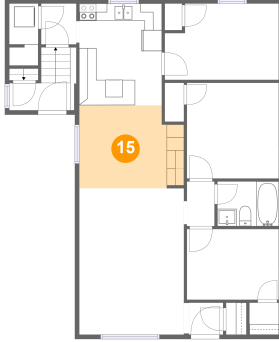


Dimensions: 12'0" x 16'10"  
Area: 203 sq. ft  
Counted as Living Area:  
Yes

Heated: Yes  
Finished: Yes  
Enclosed: Yes  
Contiguous:  
Yes  
Permitted: Yes  
Wet Space: No  
Addition: No  
Conversion: No

# 215 Federal Street, Eastdale, Stoney Creek, Ontario, Canada, L8E 1P2

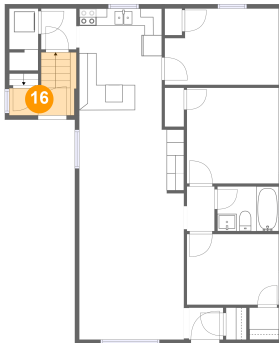
## 15 Floor 2 - Dining Area



Dimensions: 12'0" x 9'6"  
Area: 109 sq. ft  
Counted as Living Area:  
Yes

Heated: Yes  
Finished: Yes  
Enclosed: Yes  
Contiguous:  
Yes  
Permitted: Yes  
Wet Space: No  
Addition: No  
Conversion: No

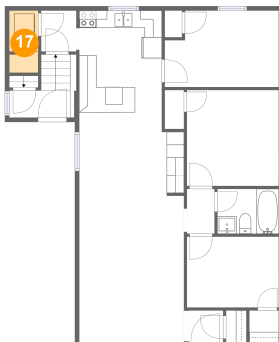
## 16 Floor 2 - Entry



Dimensions: 7'0" x 7'2"  
Area: 40 sq. ft  
Counted as Living Area:  
Yes

Heated: Yes  
Finished: Yes  
Enclosed: Yes  
Contiguous:  
Yes  
Permitted: Yes  
Wet Space: No  
Addition: No  
Conversion: No

## 17 Floor 2 - Laundry

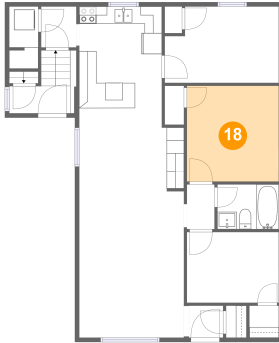


Dimensions: 3'4" x 7'2"  
Area: 23 sq. ft  
Counted as Living Area:  
Yes

Heated: Yes  
Finished: Yes  
Enclosed: Yes  
Contiguous:  
Yes  
Permitted: Yes  
Wet Space: No  
Addition: No  
Conversion: No

# 215 Federal Street, Eastdale, Stoney Creek, Ontario, Canada, L8E 1P2

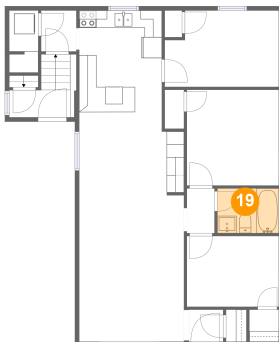
## 18 Floor 2 - Bedroom



Dimensions: 10'7" x 11'0"  
Area: 117 sq. ft  
Counted as Living Area:  
Yes

Heated: Yes  
Finished: Yes  
Enclosed: Yes  
Contiguous:  
Yes  
Permitted: Yes  
Wet Space: No  
Addition: No  
Conversion: No

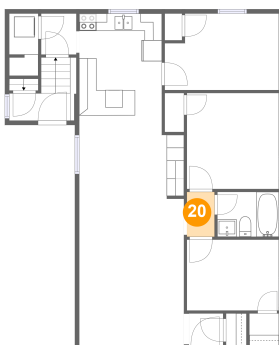
## 19 Floor 2 - Bath



Dimensions: 7'1" x 5'2"  
Area: 36 sq. ft  
Counted as Living Area:  
Yes

Heated: Yes  
Finished: Yes  
Enclosed: Yes  
Contiguous:  
Yes  
Permitted: Yes  
Wet Space: Yes  
Addition: No  
Conversion: No

## 20 Floor 2 - Hall



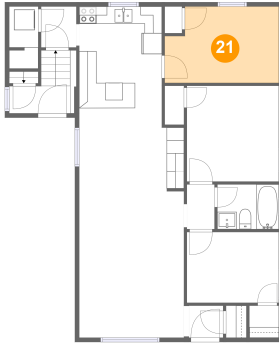
Dimensions: 3'2" x 5'2"  
Area: 16 sq. ft  
Counted as Living Area:  
Yes

Heated: Yes  
Finished: Yes  
Enclosed: Yes  
Contiguous:  
Yes  
Permitted: Yes  
Wet Space: No  
Addition: No  
Conversion: No

**215 Federal Street, Eastdale, Stoney Creek,  
Ontario, Canada, L8E 1P2**

**21 Floor 2 - Bedroom**

---

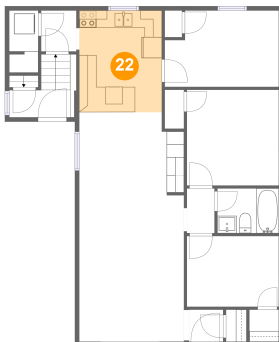


**Dimensions:** 13'2" x 8'10"  
**Area:** 108 sq. ft  
**Counted as Living Area:**  
Yes

**Heated:** Yes  
**Finished:** Yes  
**Enclosed:** Yes  
**Contiguous:**  
Yes  
**Permitted:** Yes  
**Wet Space:** No  
**Addition:** No  
**Conversion:** No

**22 Floor 2 - Kitchen**

---



**Dimensions:** 9'6" x 11'9"  
**Area:** 112 sq. ft  
**Counted as Living Area:**  
Yes

**Heated:** Yes  
**Finished:** Yes  
**Enclosed:** Yes  
**Contiguous:**  
Yes  
**Permitted:** Yes  
**Wet Space:** No  
**Addition:** No  
**Conversion:** No