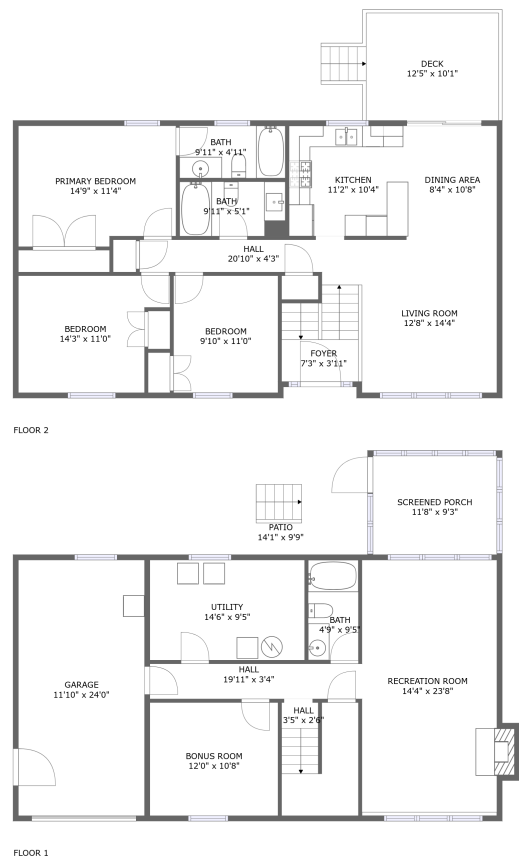


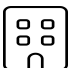
Home report

927 Harmon Circle, Old Manor, Hollins, Roanoke, Roanoke County, Virginia, United States, 24019



Total GLA: 1880 sq. ft
Floor 1: 691 sq. ft, Floor 2: 1189 sq. ft
Excluded: Garage 314 sq. ft, Utility 144 sq. ft, Screened porch 124 sq. ft, Patio 136 sq. ft, Fireplace 9 sq. ft, Deck 138 sq. ft

Property summary

 **2** Floors

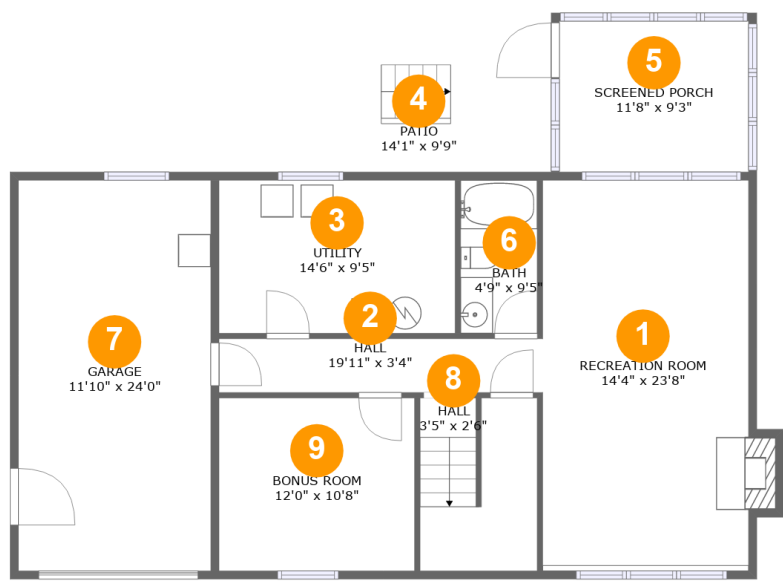
 **3** Bedrooms

 **3** Bathrooms

 **1** Garages

Home report

927 Harmon Circle, Old Manor, Hollins, Roanoke, Roanoke County, Virginia, United States, 24019



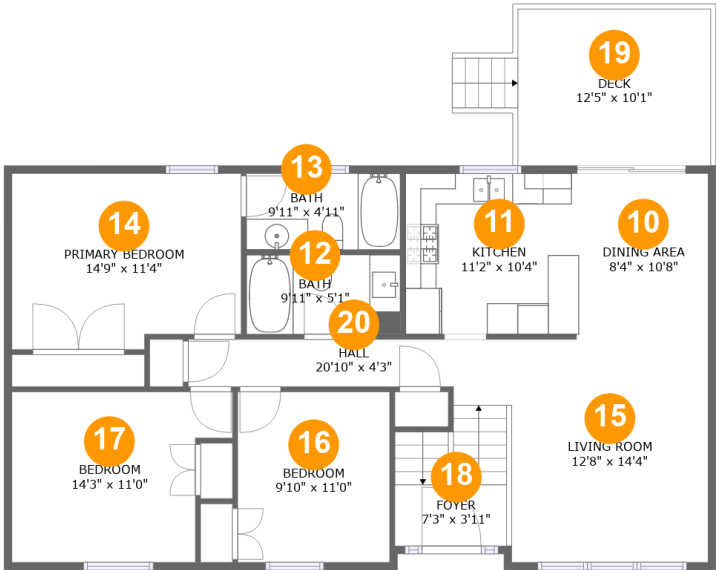
Room dimensions

Floor 1 Total:691sqft Excluded: 727sqft

#		Max Dimensions	sqft	Included
1	Recreation Room	14'4" x 23'8"	312 sq. ft	Yes
2	Hall	19'11" x 3'4"	66 sq. ft	Yes
3	Utility	14'6" x 9'5"	137 sq. ft	No
4	Patio	14'1" x 9'9"	136 sq. ft	No
5	Screened Porch	11'8" x 9'3"	108 sq. ft	No
6	Bath	4'9" x 9'5"	44 sq. ft	Yes
7	Garage	11'10" x 24'0"	284 sq. ft	No
8	Hall	3'5" x 2'6"	74 sq. ft	Yes
9	Bonus Room	12'0" x 10'8"	128 sq. ft	Yes

Home report

927 Harmon Circle, Old Manor, Hollins, Roanoke, Roanoke County, Virginia, United States, 24019



Room dimensions

Floor 2

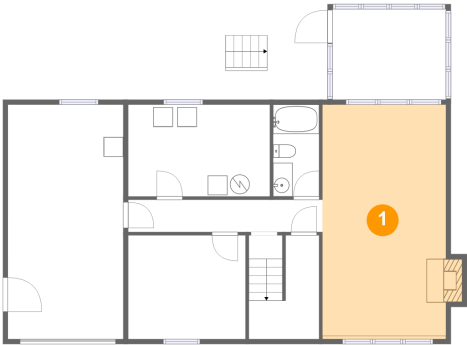
Total:1189sqft

Excluded: 138sqft

#		Max Dimensions	sqft	Included
10	Dining Area	8'4" x 10'8"	89 sq. ft	Yes
11	Kitchen	11'2" x 10'4"	116 sq. ft	Yes
12	Bath	9'11" x 5'1"	51 sq. ft	Yes
13	Bath	9'11" x 4'11"	49 sq. ft	Yes
14	Primary Bedroom	14'9" x 11'4"	162 sq. ft	Yes
15	Living Room	12'8" x 14'4"	182 sq. ft	Yes
16	Bedroom	9'10" x 11'0"	108 sq. ft	Yes
17	Bedroom	14'3" x 11'0"	137 sq. ft	Yes
18	Foyer	7'3" x 3'11"	30 sq. ft	Yes
19	Deck	12'5" x 10'1"	138 sq. ft	No
20	Hall	20'10" x 4'3"	100 sq. ft	Yes

927 Harmon Circle, Old Manor, Hollins, Roanoke, Roanoke
County, Virginia, United States, 24019

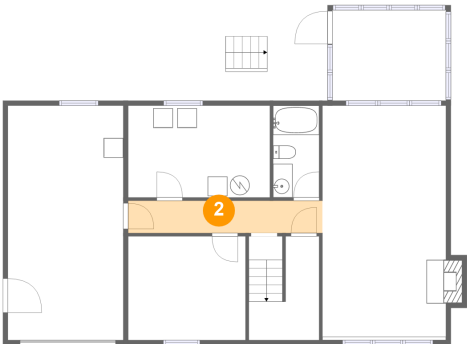
1 Floor 1 - Recreation Room



Max Dimensions: 14'4" x 23'8"
Calculated Area: 312 sq. ft
Included: Yes

Heated: Yes
Finished: Yes
Enclosed: Yes
Contiguous: Yes
Permitted: Yes
Wet space: No
Addition: No
Conversion: No

2 Floor 1 - Hall



Max Dimensions: 19'11" x 3'4"
Calculated Area: 66 sq. ft
Included: Yes

Heated: Yes
Finished: Yes
Enclosed: Yes
Contiguous: Yes
Permitted: Yes
Wet space: No
Addition: No
Conversion: No

927 Harmon Circle, Old Manor, Hollins, Roanoke, Roanoke County, Virginia, United States, 24019

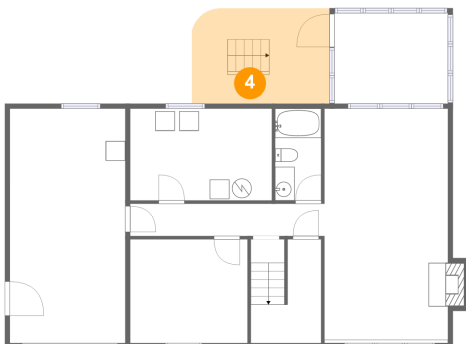
3 Floor 1 - Utility



Max Dimensions: 14'6" x 9'5"
Calculated Area: 137 sq. ft
Included: No

Heated: Yes
Finished: No
Enclosed: Yes
Contiguous: Yes
Permitted: Yes
Wet space: No
Addition: No
Conversion: No

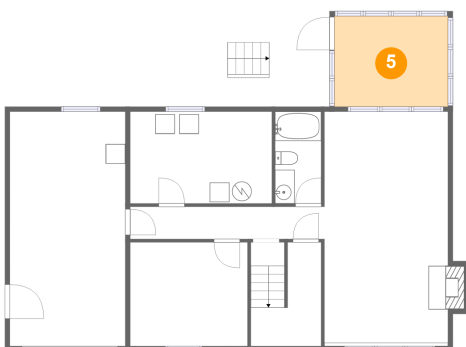
4 Floor 1 - Patio



Max Dimensions: 14'1" x 9'9"
Calculated Area: 136 sq. ft
Included: No

Heated: No
Finished: Yes
Enclosed: No
Contiguous: Yes
Permitted: Yes
Wet space: No
Addition: No
Conversion: No

5 Floor 1 - Screened Porch

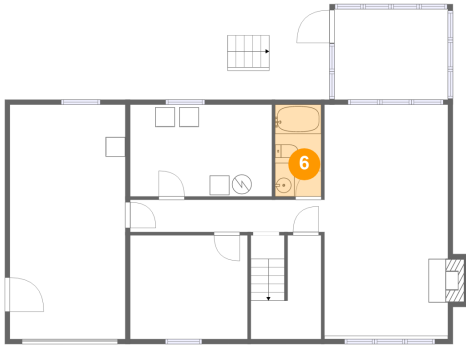


Max Dimensions: 11'8" x 9'3"
Calculated Area: 108 sq. ft
Included: No

Heated: No
Finished: Yes
Enclosed: No
Contiguous: Yes
Permitted: Yes
Wet space: No
Addition: No
Conversion: No

927 Harmon Circle, Old Manor, Hollins, Roanoke, Roanoke
County, Virginia, United States, 24019

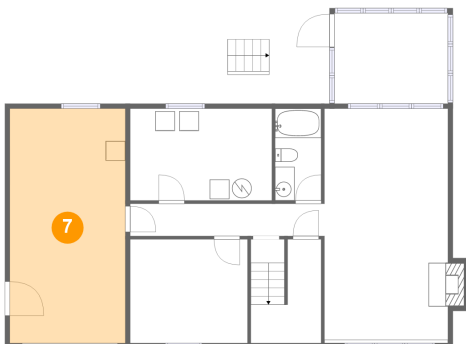
6 Floor 1 - Bath



Max Dimensions: 4'9" x 9'5"
Calculated Area: 44 sq. ft
Included: Yes

Heated: Yes
Finished: Yes
Enclosed: Yes
Contiguous: Yes
Permitted: Yes
Wet space: Yes
Addition: No
Conversion: No

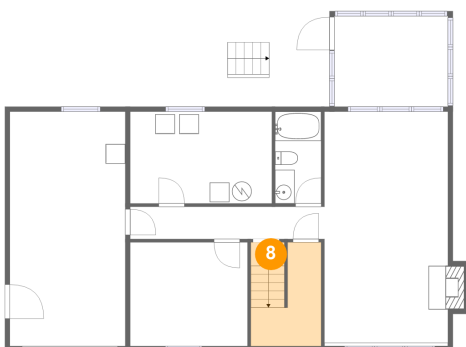
7 Floor 1 - Garage



Max Dimensions: 11'10" x
24'0"
Calculated Area: 284 sq. ft
Included: No

Heated: No
Finished: No
Enclosed: Yes
Contiguous:
Yes
Permitted: Yes
Wet space: No
Addition: No
Conversion: No

8 Floor 1 - Hall

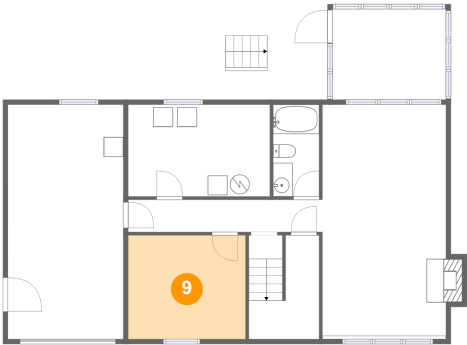


Max Dimensions: 3'5" x 2'6"
Calculated Area: 74 sq. ft
Included: Yes

Heated: Yes
Finished: Yes
Enclosed: Yes
Contiguous: Yes
Permitted: Yes
Wet space: No
Addition: No
Conversion: No

927 Harmon Circle, Old Manor, Hollins, Roanoke, Roanoke
County, Virginia, United States, 24019

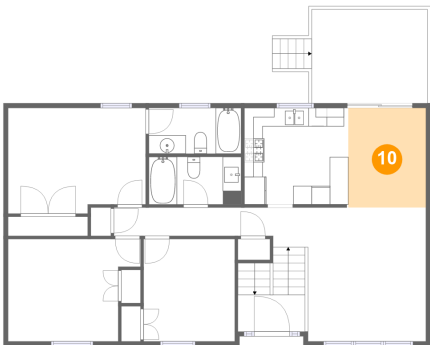
9 Floor 1 - Bonus Room



Max Dimensions: 12'0" x 10'8"
Calculated Area: 128 sq. ft
Included: Yes

Heated: Yes
Finished: Yes
Enclosed: Yes
Contiguous: Yes
Permitted: Yes
Wet space: No
Addition: No
Conversion: No

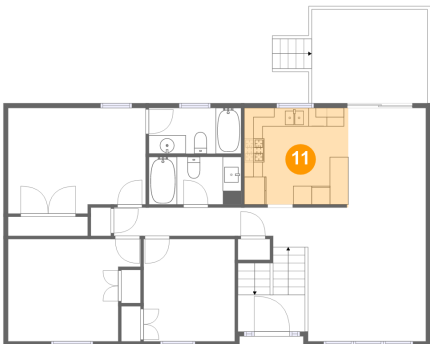
10 Floor 2 - Dining Area



Max Dimensions: 8'4" x 10'8"
Calculated Area: 89 sq. ft
Included: Yes

Heated: Yes
Finished: Yes
Enclosed: Yes
Contiguous: Yes
Permitted: Yes
Wet space: No
Addition: No
Conversion: No

11 Floor 2 - Kitchen

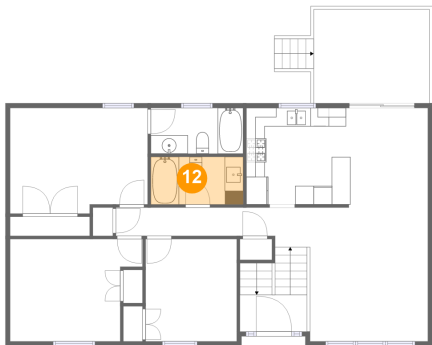


Max Dimensions: 11'2" x 10'4"
Calculated Area: 116 sq. ft
Included: Yes

Heated: Yes
Finished: Yes
Enclosed: Yes
Contiguous: Yes
Permitted: Yes
Wet space: No
Addition: No
Conversion: No

927 Harmon Circle, Old Manor, Hollins, Roanoke, Roanoke
County, Virginia, United States, 24019

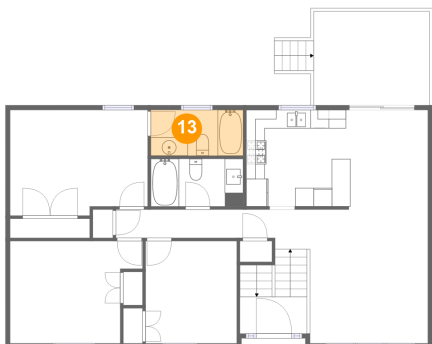
12 Floor 2 - Bath



Max Dimensions: 9'11" x 5'1"
Calculated Area: 51 sq. ft
Included: Yes

Heated: Yes
Finished: Yes
Enclosed: Yes
Contiguous: Yes
Permitted: Yes
Wet space: Yes
Addition: No
Conversion: No

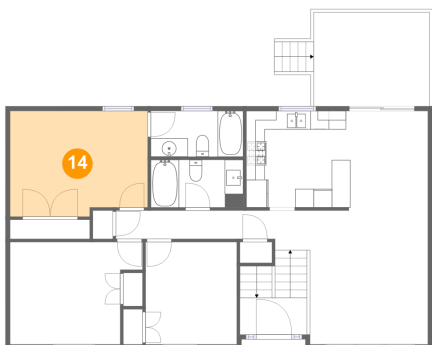
13 Floor 2 - Bath



Max Dimensions: 9'11" x 4'11"
Calculated Area: 49 sq. ft
Included: Yes

Heated: Yes
Finished: Yes
Enclosed: Yes
Contiguous: Yes
Permitted: Yes
Wet space: Yes
Addition: No
Conversion: No

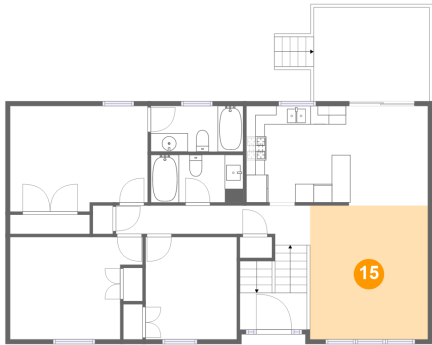
14 Floor 2 - Primary Bedroom



Max Dimensions: 14'9" x 11'4"
Calculated Area: 162 sq. ft
Included: Yes

Heated: Yes
Finished: Yes
Enclosed: Yes
Contiguous: Yes
Permitted: Yes
Wet space: No
Addition: No
Conversion: No

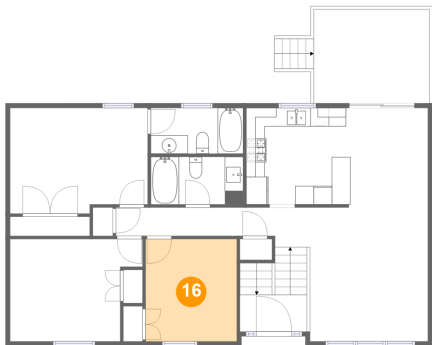
15 Floor 2 - Living Room



Max Dimensions: 12'8" x 14'4"
Calculated Area: 182 sq. ft
Included: Yes

Heated: Yes
Finished: Yes
Enclosed: Yes
Contiguous: Yes
Permitted: Yes
Wet space: No
Addition: No
Conversion: No

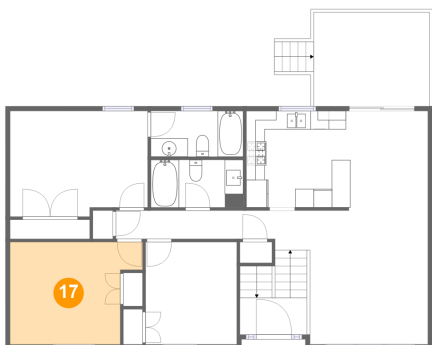
16 Floor 2 - Bedroom



Max Dimensions: 9'10" x 11'0"
Calculated Area: 108 sq. ft
Included: Yes

Heated: Yes
Finished: Yes
Enclosed: Yes
Contiguous: Yes
Permitted: Yes
Wet space: No
Addition: No
Conversion: No

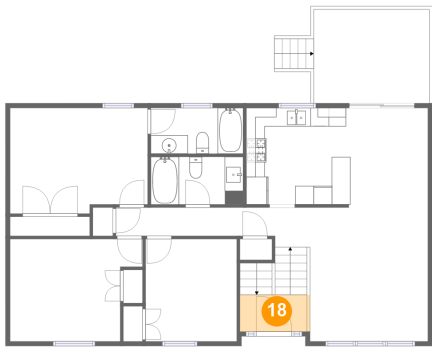
17 Floor 2 - Bedroom



Max Dimensions: 14'3" x 11'0"
Calculated Area: 137 sq. ft
Included: Yes

Heated: Yes
Finished: Yes
Enclosed: Yes
Contiguous: Yes
Permitted: Yes
Wet space: No
Addition: No
Conversion: No

18 Floor 2 - Foyer



Max Dimensions: 7'3" x 3'11"
Calculated Area: 30 sq. ft
Included: Yes

Heated: Yes
Finished: Yes
Enclosed: Yes
Contiguous: Yes
Permitted: Yes
Wet space: No
Addition: No
Conversion: No

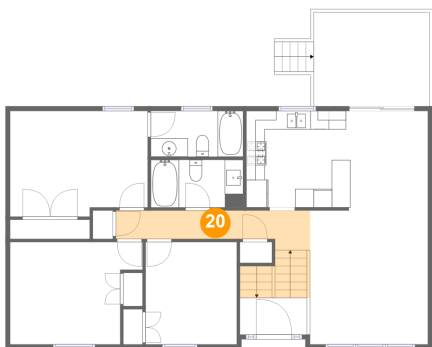
19 Floor 2 - Deck



Max Dimensions: 12'5" x 10'1"
Calculated Area: 138 sq. ft
Included: No

Heated: No
Finished: Yes
Enclosed: No
Contiguous: Yes
Permitted: Yes
Wet space: No
Addition: No
Conversion: No

20 Floor 2 - Hall



Max Dimensions: 20'10" x 4'3"
Calculated Area: 100 sq. ft
Included: Yes

Heated: Yes
Finished: Yes
Enclosed: Yes
Contiguous: Yes
Permitted: Yes
Wet space: No
Addition: No
Conversion: No