

Home report

5975 Lakemont Drive, Cave Spring, Roanoke, Roanoke County,
Virginia, United States, 24018



Total Area: 2995 sq. ft

Floor 1: 742 sq. ft, Floor 2: 889 sq. ft, Floor 3: 482 sq. ft, Floor 4: 882 sq. ft
Excluded: Low ceiling 91 sq. ft, Utility 89 sq. ft, Garage 560 sq. ft, Porch 72 sq. ft, Patio 283 sq. ft, Fireplace 10 sq. ft, Screened porch 208 sq. ft, Walls: 328 sq. ft

Property summary

**4**
Floors

**4**
Bedrooms

**3**
Bathrooms

Home report

**5975 Lakemont Drive, Cave Spring, Roanoke, Roanoke County,
Virginia, United States, 24018**



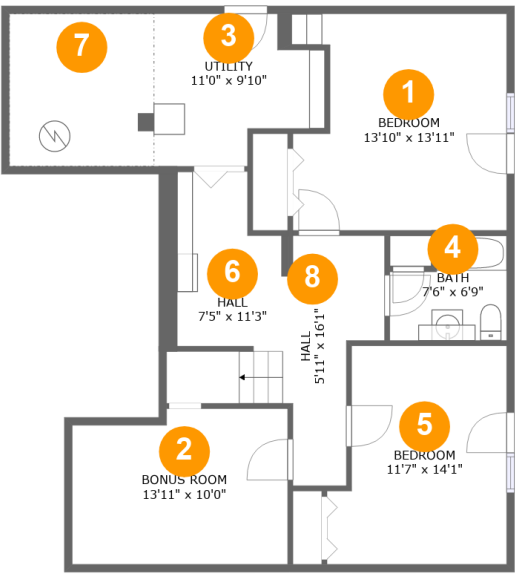
1
Half baths



1
Garages

Home report

5975 Lakemont Drive, Cave Spring, Roanoke, Roanoke County,
Virginia, United States, 24018



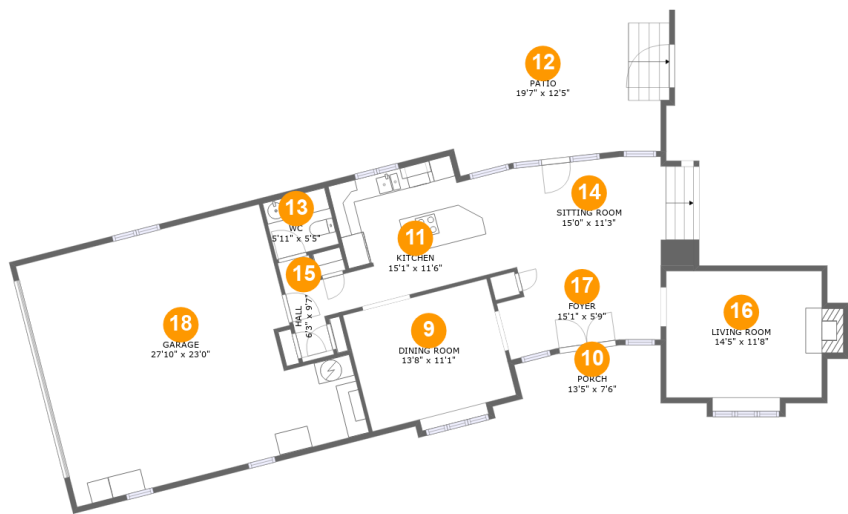
Room dimensions

Floor 1 Total:742sqft Excluded: 180sqft

#		Max Dimensions	sqft	Included
1	Bedroom	13'10" x 13'11"	178 sq. ft	Yes
2	Bonus Room	13'11" x 10'0"	133 sq. ft	Yes
3	Utility	11'0" x 9'10"	89 sq. ft	No
4	Bath	7'6" x 6'9"	44 sq. ft	Yes
5	Bedroom	11'7" x 14'1"	148 sq. ft	Yes
6	Hall	7'5" x 11'3"	99 sq. ft	Yes
7	Crawl Space	9'4" x 9'10"	91 sq. ft	No
8	Hall	5'11" x 16'1"	72 sq. ft	Yes

Home report

5975 Lakemont Drive, Cave Spring, Roanoke, Roanoke County,
Virginia, United States, 24018



Room dimensions

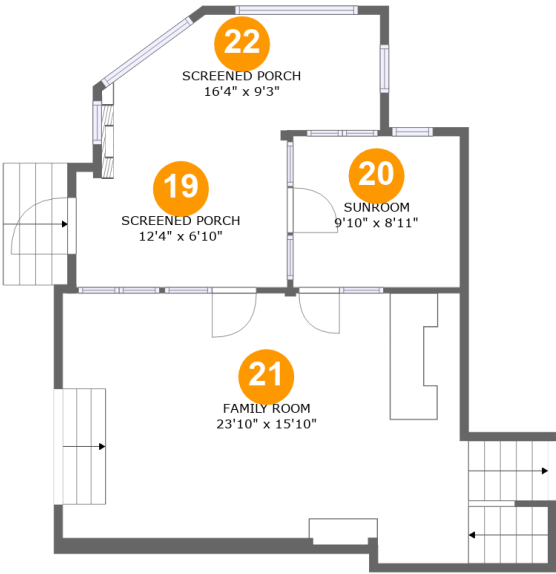
Floor 2

Total:889sqft Excluded: 925sqft

#		Max Dimensions	sqft	Included
9	Dining Room	13'8" x 11'1"	159 sq. ft	Yes
10	Porch	13'5" x 7'6"	72 sq. ft	No
11	Kitchen	15'1" x 11'6"	164 sq. ft	Yes
12	Patio	19'7" x 12'5"	283 sq. ft	No
13	WC	5'11" x 5'5"	32 sq. ft	Yes
14	Sitting Room	15'0" x 11'3"	188 sq. ft	Yes
15	Hall	6'3" x 9'7"	39 sq. ft	Yes
16	Living Room	14'5" x 11'8"	184 sq. ft	Yes
17	Foyer	15'1" x 5'9"	82 sq. ft	Yes
18	Garage	27'10" x 23'0"	560 sq. ft	No

Home report

5975 Lakemont Drive, Cave Spring, Roanoke, Roanoke County,
Virginia, United States, 24018



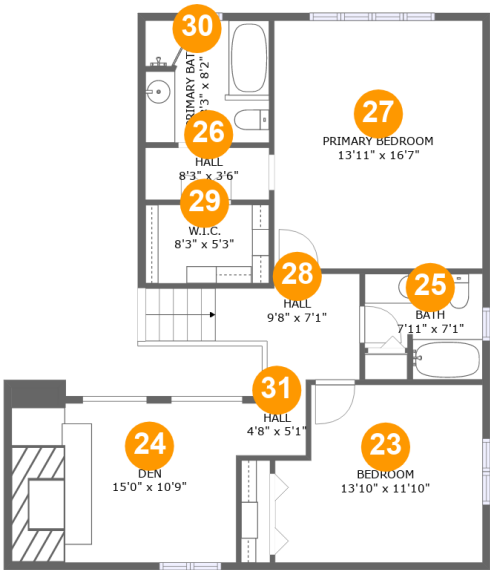
Room dimensions

Floor 3 Total:482sqft Excluded: 208sqft

#		Max Dimensions	sqft	Included
19	Screened Porch	12'4" x 6'10"	84 sq. ft	No
20	Sunroom	9'10" x 8'11"	87 sq. ft	Yes
21	Family Room	23'10" x 15'10"	381 sq. ft	Yes
22	Screened Porch	16'4" x 9'3"	124 sq. ft	No

Home report

5975 Lakemont Drive, Cave Spring, Roanoke, Roanoke County,
Virginia, United States, 24018



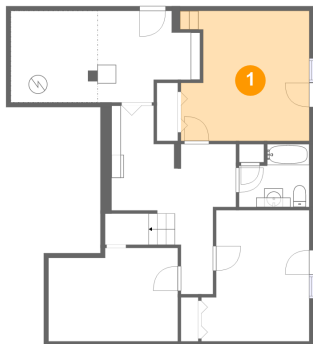
Room dimensions

Floor 4 Total:882sqft Excluded: 0sqft

#		Max Dimensions	sqft	Included
23	Bedroom	13'10" x 11'10"	152 sq. ft	Yes
24	Den	15'0" x 10'9"	165 sq. ft	Yes
25	Bath	7'11" x 7'1"	48 sq. ft	Yes
26	Hall	8'3" x 3'6"	29 sq. ft	Yes
27	Primary Bedroom	13'11" x 16'7"	231 sq. ft	Yes
28	Hall	9'8" x 7'1"	72 sq. ft	Yes
29	W.I.C.	8'3" x 5'3"	43 sq. ft	Yes
30	Primary Bath	8'3" x 8'2"	66 sq. ft	Yes
31	Hall	4'8" x 5'1"	21 sq. ft	Yes

5975 Lakemont Drive, Cave Spring, Roanoke, Roanoke County,
Virginia, United States, 24018

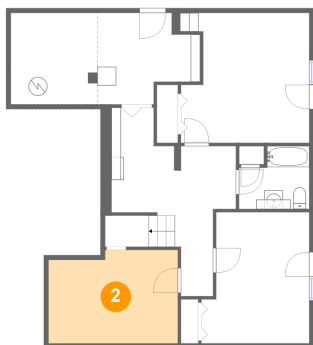
1 Floor 1 - Bedroom



Max Dimensions: 13'10" x 13'11"
Calculated Area: 178 sq. ft
Included: Yes

Heated: Yes
Finished: Yes
Enclosed: Yes
Contiguous: Yes
Permitted: Yes
Wet space: No
Addition: No
Conversion: No

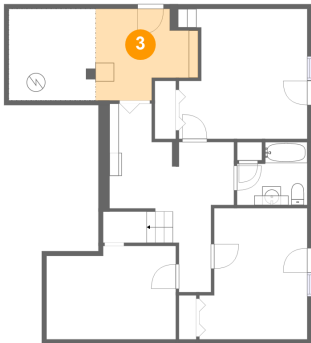
2 Floor 1 - Bonus Room



Max Dimensions: 13'11" x 10'0"
Calculated Area: 133 sq. ft
Included: Yes

Heated: Yes
Finished: Yes
Enclosed: Yes
Contiguous: Yes
Permitted: Yes
Wet space: No
Addition: No
Conversion: No

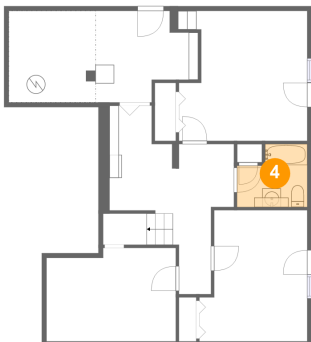
3 Floor 1 - Utility



Max Dimensions: 11'0" x 9'10"
Calculated Area: 89 sq. ft
Included: No

Heated: Yes
Finished: No
Enclosed: Yes
Contiguous: Yes
Permitted: Yes
Wet space: No
Addition: No
Conversion: No

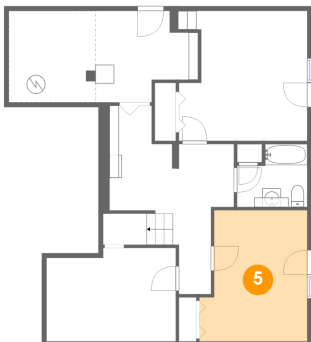
4 Floor 1 - Bath



Max Dimensions: 7'6" x 6'9"
Calculated Area: 44 sq. ft
Included: Yes

Heated: Yes
Finished: Yes
Enclosed: Yes
Contiguous: Yes
Permitted: Yes
Wet space: Yes
Addition: No
Conversion: No

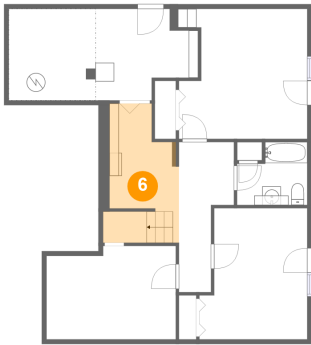
5 Floor 1 - Bedroom



Max Dimensions: 11'7" x 14'1"
Calculated Area: 148 sq. ft
Included: Yes

Heated: Yes
Finished: Yes
Enclosed: Yes
Contiguous: Yes
Permitted: Yes
Wet space: No
Addition: No
Conversion: No

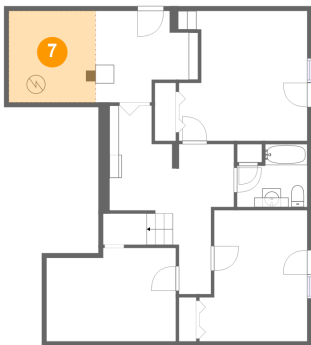
6 Floor 1 - Hall



Max Dimensions: 7'5" x 11'3"
Calculated Area: 99 sq. ft
Included: Yes

Heated: Yes
Finished: Yes
Enclosed: Yes
Contiguous: Yes
Permitted: Yes
Wet space: No
Addition: No
Conversion: No

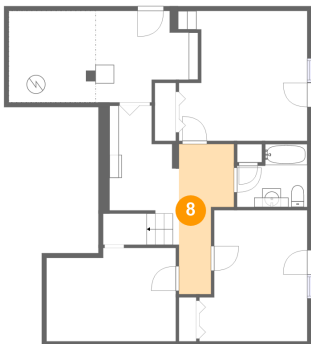
7 Floor 1 - Crawl Space



Max Dimensions: 9'4" x 9'10"
Calculated Area: 91 sq. ft
Included: No

Heated: No
Finished: No
Enclosed: No
Contiguous: Yes
Permitted: No
Wet space: No
Addition: No
Conversion: No

8 Floor 1 - Hall

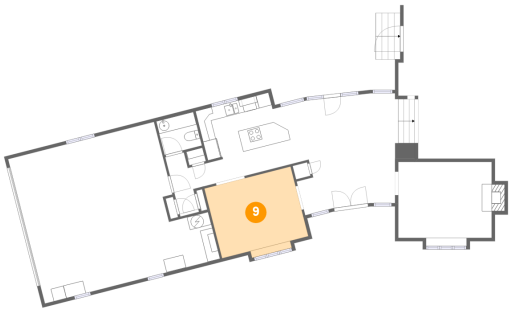


Max Dimensions: 5'11" x 16'1"
Calculated Area: 72 sq. ft
Included: Yes

Heated: Yes
Finished: Yes
Enclosed: Yes
Contiguous: Yes
Permitted: Yes
Wet space: No
Addition: No
Conversion: No

5975 Lakemont Drive, Cave Spring, Roanoke, Roanoke County,
Virginia, United States, 24018

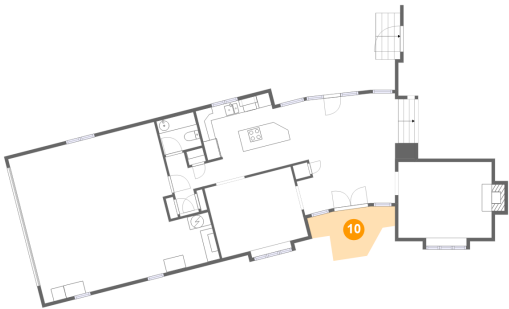
9 Floor 2 - Dining Room



Max Dimensions: 13'8" x 11'1"
Calculated Area: 159 sq. ft
Included: Yes

Heated: Yes
Finished: Yes
Enclosed: Yes
Contiguous: Yes
Permitted: Yes
Wet space: No
Addition: No
Conversion: No

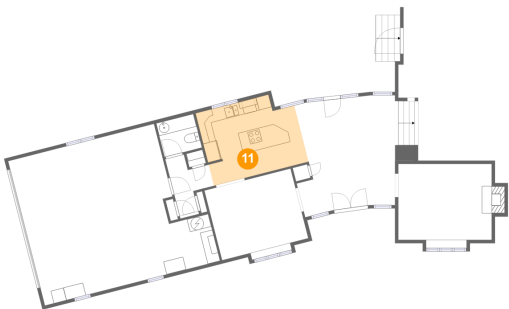
10 Floor 2 - Porch



Max Dimensions: 13'5" x 7'6"
Calculated Area: 72 sq. ft
Included: No

Heated: No
Finished: Yes
Enclosed: No
Contiguous: Yes
Permitted: Yes
Wet space: No
Addition: No
Conversion: No

11 Floor 2 - Kitchen

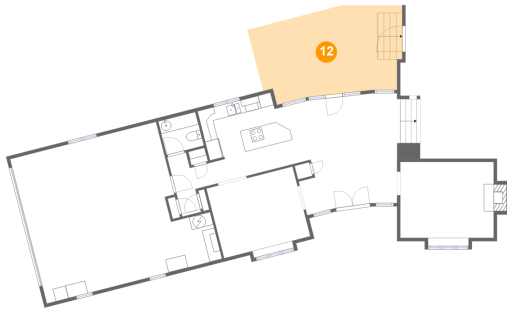


Max Dimensions: 15'1" x 11'6"
Calculated Area: 164 sq. ft
Included: Yes

Heated: Yes
Finished: Yes
Enclosed: Yes
Contiguous: Yes
Permitted: Yes
Wet space: No
Addition: No
Conversion: No

5975 Lakemont Drive, Cave Spring, Roanoke, Roanoke County,
Virginia, United States, 24018

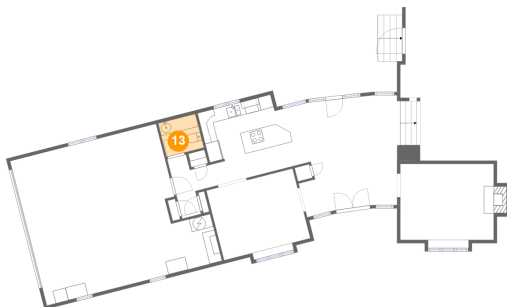
12 Floor 2 - Patio



Max Dimensions: 19'7" x 12'5"
Calculated Area: 283 sq. ft
Included: No

Heated: No
Finished: Yes
Enclosed: No
Contiguous: Yes
Permitted: Yes
Wet space: No
Addition: No
Conversion: No

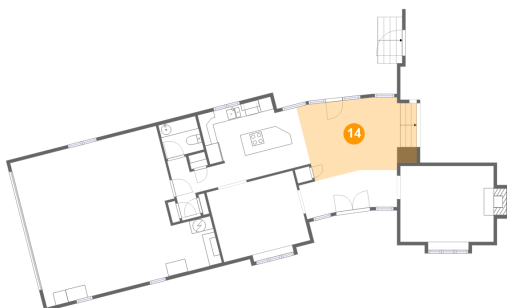
13 Floor 2 - WC



Max Dimensions: 5'11" x 5'5"
Calculated Area: 32 sq. ft
Included: Yes

Heated: Yes
Finished: Yes
Enclosed: Yes
Contiguous: Yes
Permitted: Yes
Wet space: Yes
Addition: No
Conversion: No

14 Floor 2 - Sitting Room

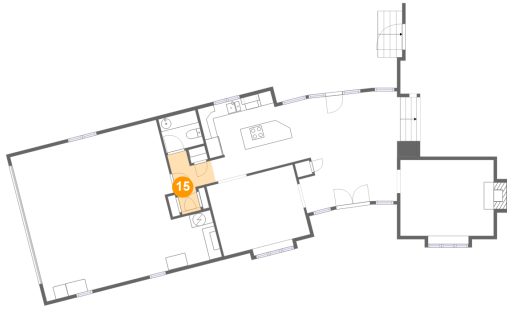


Max Dimensions: 15'0" x 11'3"
Calculated Area: 188 sq. ft
Included: Yes

Heated: Yes
Finished: Yes
Enclosed: Yes
Contiguous: Yes
Permitted: Yes
Wet space: No
Addition: No
Conversion: No

5975 Lakemont Drive, Cave Spring, Roanoke, Roanoke County,
Virginia, United States, 24018

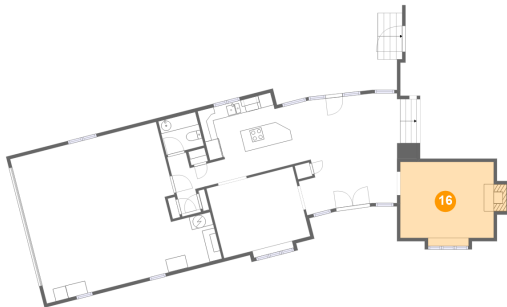
15 Floor 2 - Hall



Max Dimensions: 6'3" x 9'7"
Calculated Area: 39 sq. ft
Included: Yes

Heated: Yes
Finished: Yes
Enclosed: Yes
Contiguous: Yes
Permitted: Yes
Wet space: No
Addition: No
Conversion: No

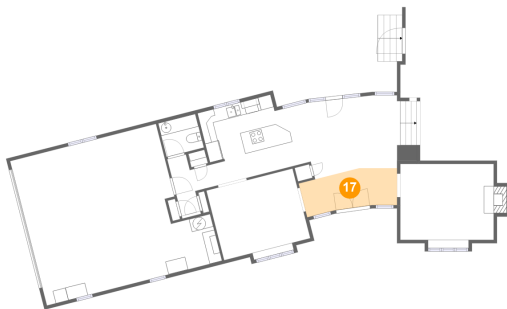
16 Floor 2 - Living Room



Max Dimensions: 14'5" x
11'8"
Calculated Area: 184 sq. ft
Included: Yes

Heated: Yes
Finished: Yes
Enclosed: Yes
Contiguous:
Yes
Permitted: Yes
Wet space: No
Addition: No
Conversion: No

17 Floor 2 - Foyer

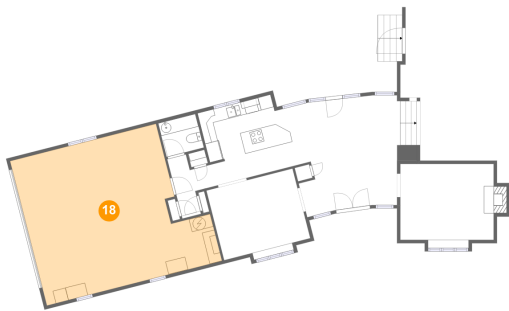


Max Dimensions: 15'1" x
5'9"
Calculated Area: 82 sq. ft
Included: Yes

Heated: Yes
Finished: Yes
Enclosed: Yes
Contiguous:
Yes
Permitted: Yes
Wet space: No
Addition: No
Conversion: No

5975 Lakemont Drive, Cave Spring, Roanoke, Roanoke County,
Virginia, United States, 24018

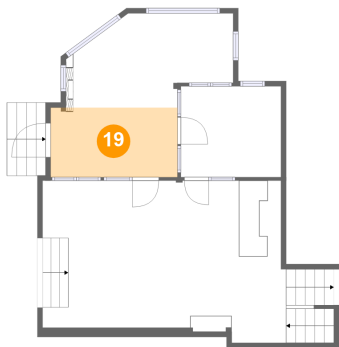
18 Floor 2 - Garage



Max Dimensions: 27'10" x 23'0"
Calculated Area: 560 sq. ft
Included: No

Heated: No
Finished: No
Enclosed: Yes
Contiguous: Yes
Permitted: Yes
Wet space: No
Addition: No
Conversion: No

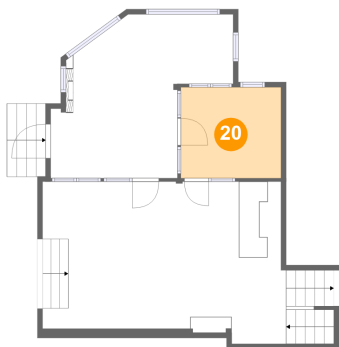
19 Floor 3 - Screened Porch



Max Dimensions: 12'4" x 6'10"
Calculated Area: 84 sq. ft
Included: No

Heated: No
Finished: No
Enclosed: No
Contiguous: No
Permitted: Yes
Wet space: No
Addition: No
Conversion: No

20 Floor 3 - Sunroom

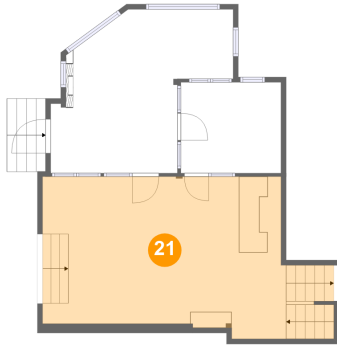


Max Dimensions: 9'10" x 8'11"
Calculated Area: 87 sq. ft
Included: Yes

Heated: Yes
Finished: Yes
Enclosed: Yes
Contiguous: Yes
Permitted: Yes
Wet space: No
Addition: No
Conversion: No

5975 Lakemont Drive, Cave Spring, Roanoke, Roanoke County,
Virginia, United States, 24018

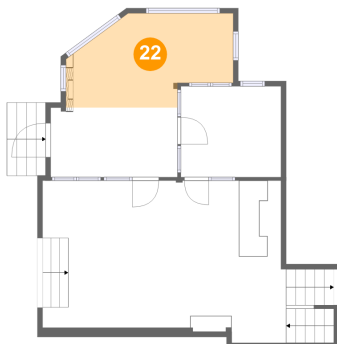
21 Floor 3 - Family Room



Max Dimensions: 23'10" x 15'10"
Calculated Area: 381 sq. ft
Included: Yes

Heated: Yes
Finished: Yes
Enclosed: Yes
Contiguous: Yes
Permitted: Yes
Wet space: No
Addition: No
Conversion: No

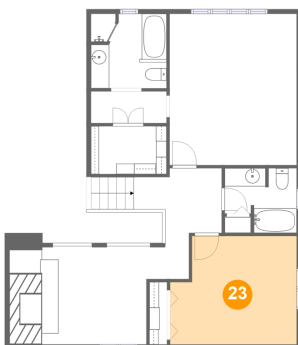
22 Floor 3 - Screened Porch



Max Dimensions: 16'4" x 9'3"
Calculated Area: 124 sq. ft
Included: No

Heated: No
Finished: No
Enclosed: No
Contiguous: No
Permitted: Yes
Wet space: No
Addition: No
Conversion: No

23 Floor 4 - Bedroom

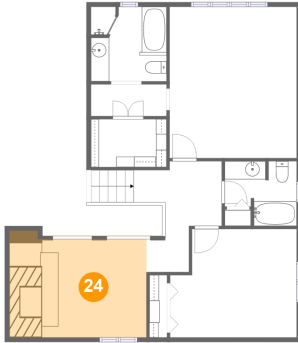


Max Dimensions: 13'10" x 11'10"
Calculated Area: 152 sq. ft
Included: Yes

Heated: Yes
Finished: Yes
Enclosed: Yes
Contiguous: Yes
Permitted: Yes
Wet space: No
Addition: No
Conversion: No

5975 Lakemont Drive, Cave Spring, Roanoke, Roanoke County,
Virginia, United States, 24018

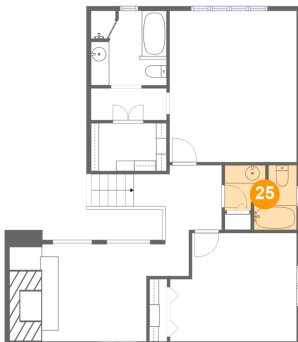
24 Floor 4 - Den



Max Dimensions: 15'0" x 10'9"
Calculated Area: 165 sq. ft
Included: Yes

Heated: Yes
Finished: Yes
Enclosed: Yes
Contiguous: Yes
Permitted: Yes
Wet space: No
Addition: No
Conversion: No

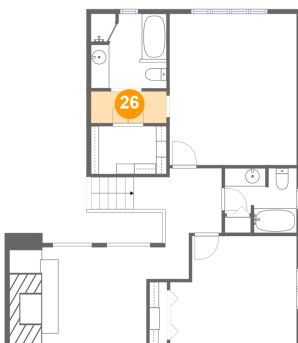
25 Floor 4 - Bath



Max Dimensions: 7'11" x 7'1"
Calculated Area: 48 sq. ft
Included: Yes

Heated: Yes
Finished: Yes
Enclosed: Yes
Contiguous: Yes
Permitted: Yes
Wet space: Yes
Addition: No
Conversion: No

26 Floor 4 - Hall

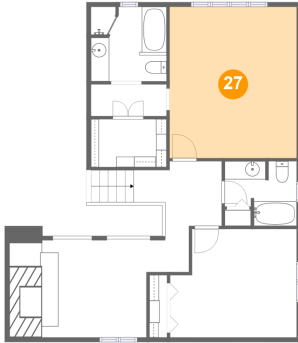


Max Dimensions: 8'3" x 3'6"
Calculated Area: 29 sq. ft
Included: Yes

Heated: Yes
Finished: Yes
Enclosed: Yes
Contiguous: Yes
Permitted: Yes
Wet space: No
Addition: No
Conversion: No

5975 Lakemont Drive, Cave Spring, Roanoke, Roanoke County,
Virginia, United States, 24018

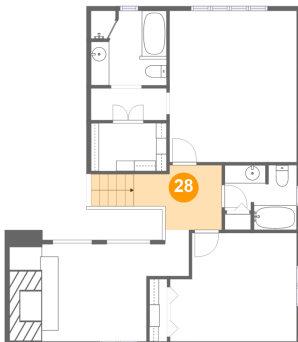
27 Floor 4 - Primary Bedroom



Max Dimensions: 13'11" x 16'7"
Calculated Area: 231 sq. ft
Included: Yes

Heated: Yes
Finished: Yes
Enclosed: Yes
Contiguous: Yes
Permitted: Yes
Wet space: No
Addition: No
Conversion: No

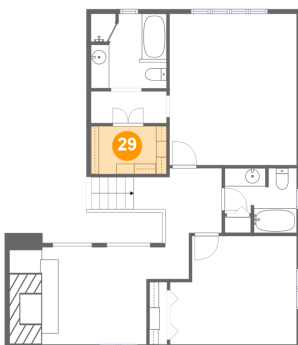
28 Floor 4 - Hall



Max Dimensions: 9'8" x 7'1"
Calculated Area: 72 sq. ft
Included: Yes

Heated: Yes
Finished: Yes
Enclosed: Yes
Contiguous: Yes
Permitted: Yes
Wet space: No
Addition: No
Conversion: No

29 Floor 4 - W.I.C.

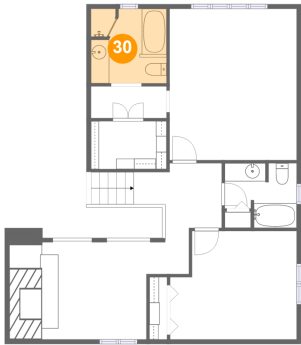


Max Dimensions: 8'3" x 5'3"
Calculated Area: 43 sq. ft
Included: Yes

Heated: Yes
Finished: Yes
Enclosed: Yes
Contiguous: Yes
Permitted: Yes
Wet space: No
Addition: No
Conversion: No

5975 Lakemont Drive, Cave Spring, Roanoke, Roanoke County,
Virginia, United States, 24018

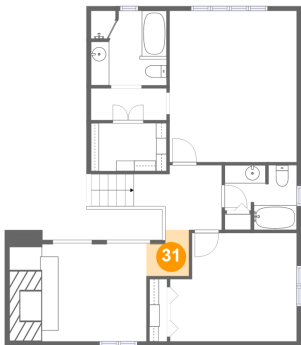
30 Floor 4 - Primary Bath



Max Dimensions: 8'3" x 8'2"
Calculated Area: 66 sq. ft
Included: Yes

Heated: Yes
Finished: Yes
Enclosed: Yes
Contiguous: Yes
Permitted: Yes
Wet space: Yes
Addition: No
Conversion: No

31 Floor 4 - Hall



Max Dimensions: 4'8" x 5'1"
Calculated Area: 21 sq. ft
Included: Yes

Heated: Yes
Finished: Yes
Enclosed: Yes
Contiguous: Yes
Permitted: Yes
Wet space: No
Addition: No
Conversion: No