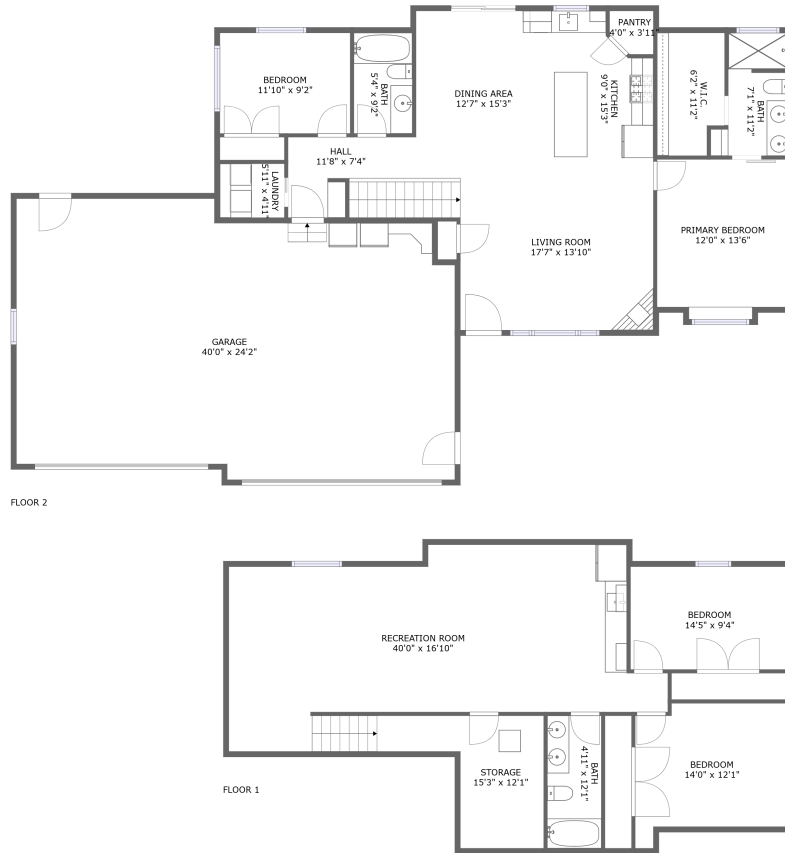



# 2148 Talisker Avenue, Spearfish, Lawrence County, South Dakota, United States, 57783



## Property summary


 **1** Garages

 **4** Bedrooms

 **3** Bathrooms

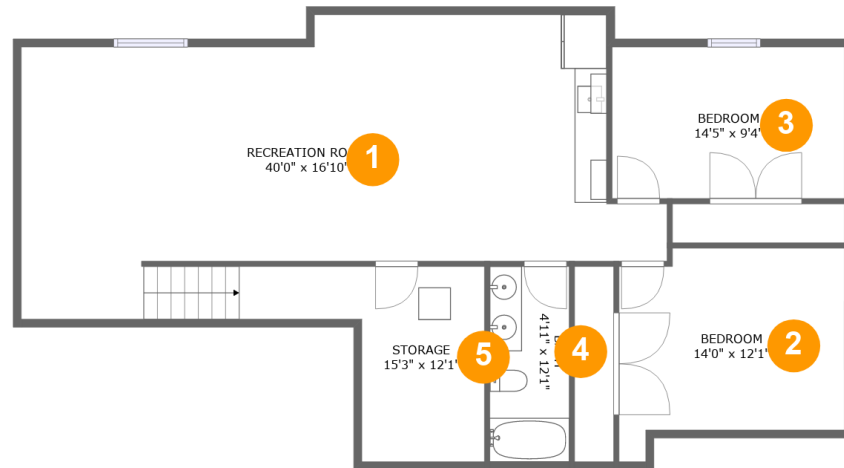
 **0** Half baths

 **2** Floors

 **2,385** Gross living area sqft

 **3,504** Total sqft

2148 Talisker Avenue, Spearfish, Lawrence County,  
South Dakota, United States, 57783



## Room dimensions

Floor 1

Total sqft: 1217 Living area: 1088

#		Dimensions	sqft	Counted as living area
1	Recreation Room	40'0" x 16'10"	578 sq. ft	Yes
2	Bedroom	14'0" x 12'1"	157 sq. ft	Yes
3	Bedroom	14'5" x 9'4"	135 sq. ft	Yes
4	Bath	4'11" x 12'1"	60 sq. ft	Yes
5	Storage	15'3" x 12'1"	117 sq. ft	No

# 2148 Talisker Avenue, Spearfish, Lawrence County, South Dakota, United States, 57783



## Room dimensions

Floor 2

Total sqft: 2287 Living area: 1297

#		Dimensions	sqft	Counted as living area
6	Garage	40'0" x 24'2"	941 sq. ft	No
7	Dining Area	12'7" x 15'3"	193 sq. ft	Yes
8	Bedroom	11'10" x 9'2"	109 sq. ft	Yes
9	Living Room	17'7" x 13'10"	259 sq. ft	Yes
10	W.I.C.	6'2" x 11'2"	65 sq. ft	Yes
11	Pantry	4'0" x 3'11"	14 sq. ft	Yes
12	Bath	5'4" x 9'2"	49 sq. ft	Yes
13	Kitchen	9'0" x 15'3"	121 sq. ft	Yes
14	Laundry	5'11" x 4'11"	29 sq. ft	Yes
15	Primary Bedroom	12'0" x 13'6"	168 sq. ft	Yes
16	Bath	7'1" x 11'2"	65 sq. ft	Yes

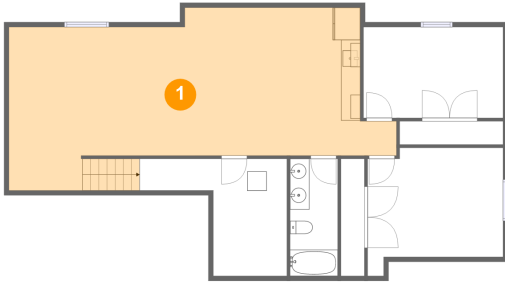
**2148 Talisker Avenue, Spearfish, Lawrence County,  
South Dakota, United States, 57783**

#		Dimensions	sqft	Counted as living area
17	Hall	11'8" x 7'4"	84 sq. ft	Yes

# 2148 Talisker Avenue, Spearfish, Lawrence County, South Dakota, United States, 57783

## 1 Floor 1 - Recreation Room

---

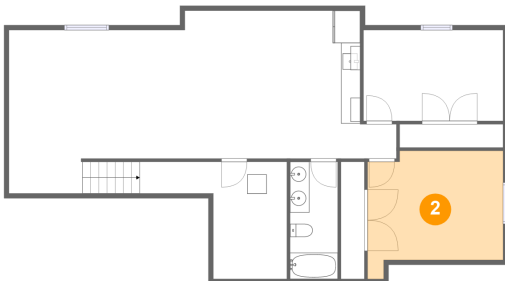


Dimensions: 40'0" x 16'10"  
Area: 578 sq. ft  
Counted as living area: Yes

Heated: Yes  
Finished: Yes  
Enclosed: Yes  
Contiguous: Yes  
Permitted: Yes  
Wet space: No  
Addition: No  
Conversion: No

## 2 Floor 1 - Bedroom

---



Dimensions: 14'0" x 12'1"  
Area: 157 sq. ft  
Counted as living area: Yes

Heated: Yes  
Finished: Yes  
Enclosed: Yes  
Contiguous: Yes  
Permitted: Yes  
Wet space: No  
Addition: No  
Conversion: No

# 2148 Talisker Avenue, Spearfish, Lawrence County, South Dakota, United States, 57783

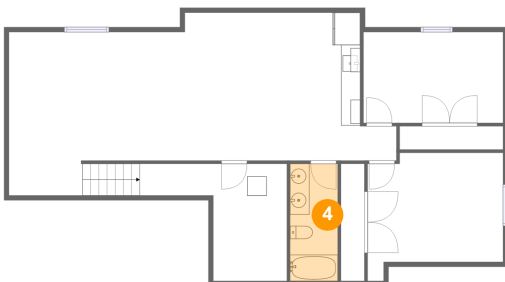
## 3 Floor 1 - Bedroom



Dimensions: 14'5" x 9'4"  
Area: 135 sq. ft  
Counted as living area: Yes

Heated: Yes  
Finished: Yes  
Enclosed: Yes  
Contiguous: Yes  
Permitted: Yes  
Wet space: No  
Addition: No  
Conversion: No

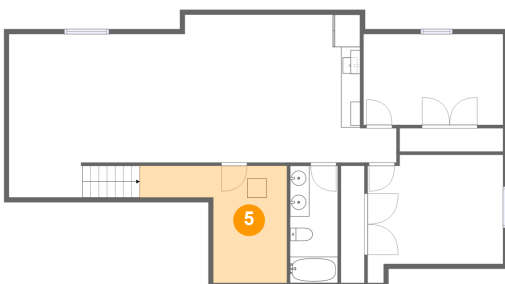
## 4 Floor 1 - Bath



Dimensions: 4'11" x 12'1"  
Area: 60 sq. ft  
Counted as living area: Yes

Heated: Yes  
Finished: Yes  
Enclosed: Yes  
Contiguous: Yes  
Permitted: Yes  
Wet space: Yes  
Addition: No  
Conversion: No

## 5 Floor 1 - Storage



Dimensions: 15'3" x 12'1"  
Area: 117 sq. ft  
Counted as living area: No

Heated: No  
Finished: No  
Enclosed: No  
Contiguous: Yes  
Permitted: Yes  
Wet space: No  
Addition: No  
Conversion: No

2148 Talisker Avenue, Spearfish, Lawrence County,  
South Dakota, United States, 57783

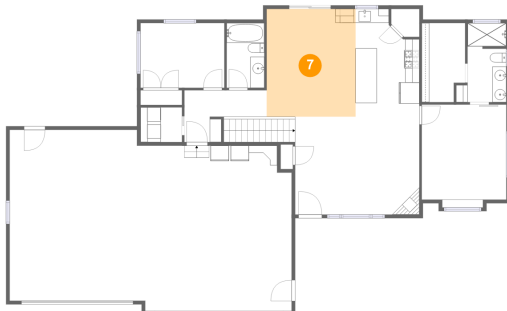
## 6 Floor 2 - Garage



Dimensions: 40'0" x 24'2"  
Area: 941 sq. ft  
Counted as living area: No

Heated: No  
Finished: No  
Enclosed: Yes  
Contiguous: Yes  
Permitted: Yes  
Wet space: No  
Addition: No  
Conversion: No

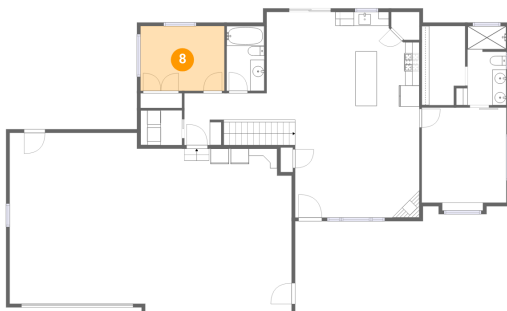
## 7 Floor 2 - Dining Area



Dimensions: 12'7" x 15'3"  
Area: 193 sq. ft  
Counted as living area: Yes

Heated: Yes  
Finished: Yes  
Enclosed: Yes  
Contiguous: Yes  
Permitted: Yes  
Wet space: No  
Addition: No  
Conversion: No

## 8 Floor 2 - Bedroom

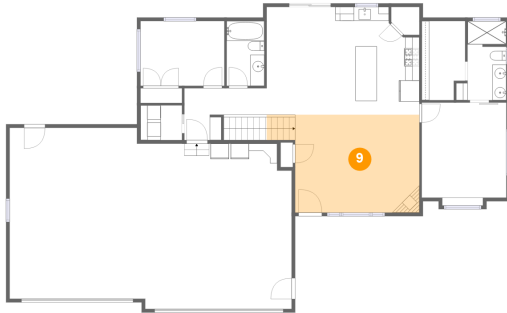


Dimensions: 11'10" x 9'2"  
Area: 109 sq. ft  
Counted as living area: Yes

Heated: Yes  
Finished: Yes  
Enclosed: Yes  
Contiguous: Yes  
Permitted: Yes  
Wet space: No  
Addition: No  
Conversion: No

# 2148 Talisker Avenue, Spearfish, Lawrence County, South Dakota, United States, 57783

## 9 Floor 2 - Living Room



Dimensions: 17'7" x 13'10"  
Area: 259 sq. ft  
Counted as living area: Yes

Heated: Yes  
Finished: Yes  
Enclosed: Yes  
Contiguous: Yes  
Permitted: Yes  
Wet space: No  
Addition: No  
Conversion: No

## 10 Floor 2 - W.I.C.



Dimensions: 6'2" x 11'2"  
Area: 65 sq. ft  
Counted as living area: Yes

Heated: Yes  
Finished: Yes  
Enclosed: Yes  
Contiguous: Yes  
Permitted: Yes  
Wet space: No  
Addition: No  
Conversion: No

## 11 Floor 2 - Pantry



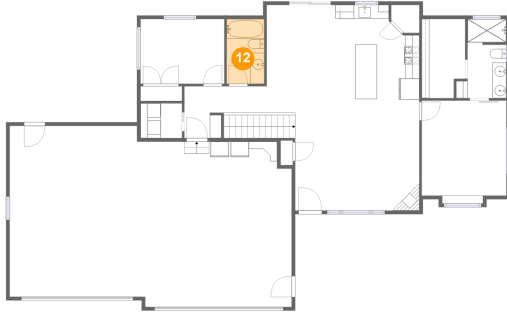
Dimensions: 4'0" x 3'11"  
Area: 14 sq. ft  
Counted as living area: Yes

Heated: Yes  
Finished: Yes  
Enclosed: Yes  
Contiguous: Yes  
Permitted: Yes  
Wet space: No  
Addition: No  
Conversion: No



# 2148 Talisker Avenue, Spearfish, Lawrence County, South Dakota, United States, 57783

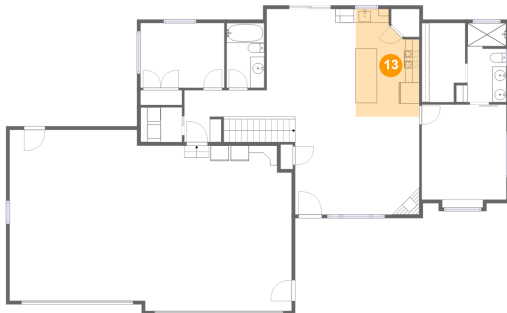
## 12 Floor 2 - Bath



Dimensions: 5'4" x 9'2"  
Area: 49 sq. ft  
Counted as living area: Yes

Heated: Yes  
Finished: Yes  
Enclosed: Yes  
Contiguous: Yes  
Permitted: Yes  
Wet space: Yes  
Addition: No  
Conversion: No

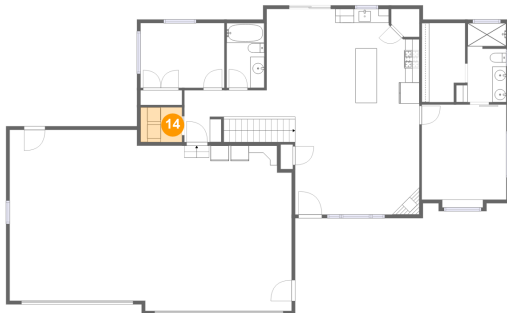
## 13 Floor 2 - Kitchen



Dimensions: 9'0" x 15'3"  
Area: 121 sq. ft  
Counted as living area: Yes

Heated: Yes  
Finished: Yes  
Enclosed: Yes  
Contiguous: Yes  
Permitted: Yes  
Wet space: No  
Addition: No  
Conversion: No

## 14 Floor 2 - Laundry



Dimensions: 5'11" x 4'11"  
Area: 29 sq. ft  
Counted as living area: Yes

Heated: Yes  
Finished: Yes  
Enclosed: Yes  
Contiguous: Yes  
Permitted: Yes  
Wet space: No  
Addition: No  
Conversion: No

# 2148 Talisker Avenue, Spearfish, Lawrence County, South Dakota, United States, 57783

## 15 Floor 2 - Primary Bedroom



Dimensions: 12'0" x 13'6"  
Area: 168 sq. ft  
Counted as living area: Yes

Heated: Yes  
Finished: Yes  
Enclosed: Yes  
Contiguous: Yes  
Permitted: Yes  
Wet space: No  
Addition: No  
Conversion: No

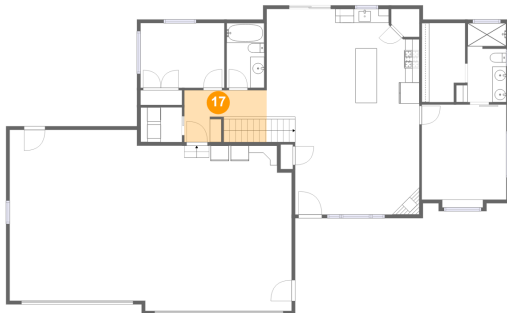
## 16 Floor 2 - Bath



Dimensions: 7'1" x 11'2"  
Area: 65 sq. ft  
Counted as living area: Yes

Heated: Yes  
Finished: Yes  
Enclosed: Yes  
Contiguous: Yes  
Permitted: Yes  
Wet space: Yes  
Addition: No  
Conversion: No

## 17 Floor 2 - Hall



Dimensions: 11'8" x 7'4"  
Area: 84 sq. ft  
Counted as living area: Yes

Heated: Yes  
Finished: Yes  
Enclosed: Yes  
Contiguous: Yes  
Permitted: Yes  
Wet space: No  
Addition: No  
Conversion: No