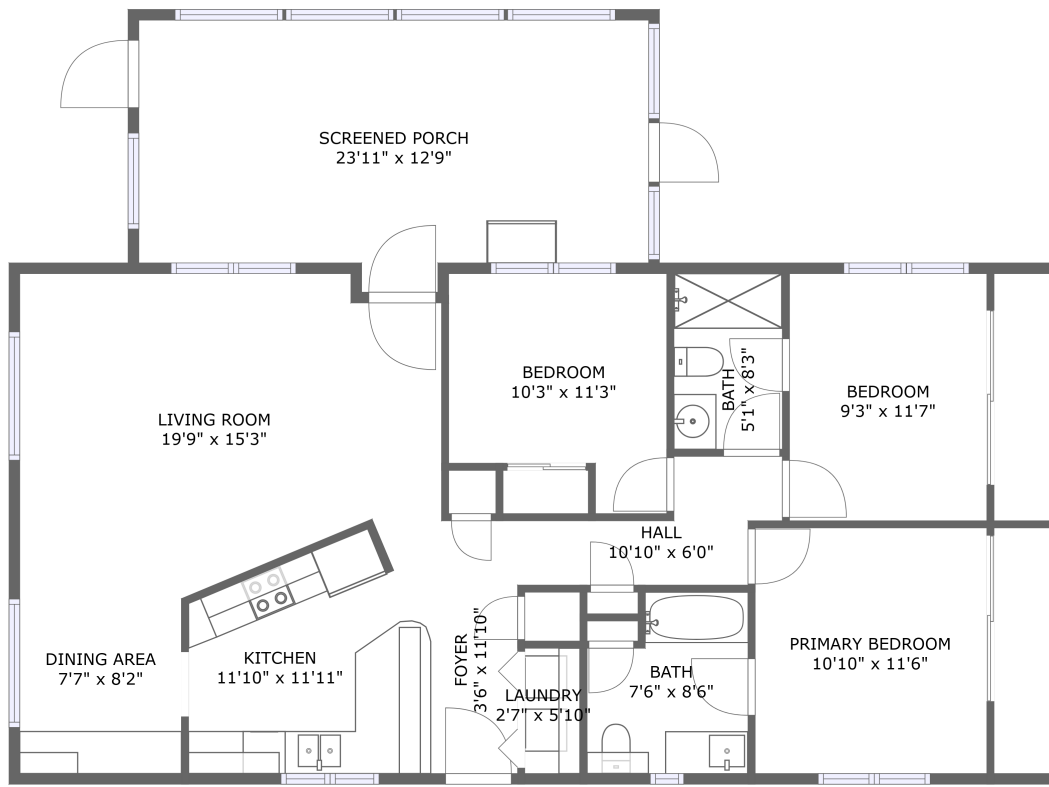



4351 Larch Loop NE, Salem, OR, US



FLOOR 1

Property summary

 **0** Garages


 **3** Bedrooms

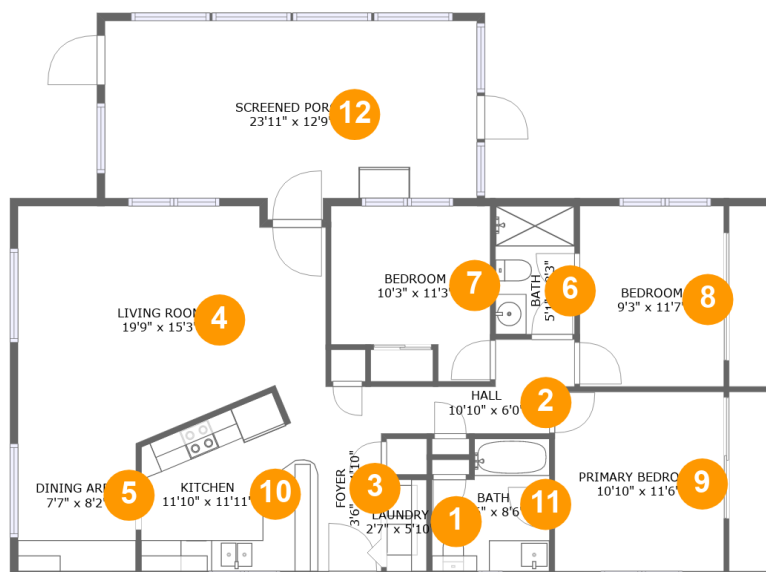
 **2** Bathrooms

 **0** Half baths

 **1** Floors

 **1,198**
Gross living
area sqft

 **1,498**
Total sqft

4351 Larch Loop NE, Salem, OR, US**Room dimensions**

Floor 1

Total sqft: 1498 Living area: 1198

| # | | Dimensions | sqft | Counted as living area |
|----|-----------------|-----------------|------------|------------------------|
| 1 | Laundry | 2'7" x 5'10" | 15 sq. ft | Yes |
| 2 | Hall | 10'10" x 6'0" | 48 sq. ft | Yes |
| 3 | Foyer | 3'6" x 11'10" | 42 sq. ft | Yes |
| 4 | Living Room | 19'9" x 15'3" | 266 sq. ft | Yes |
| 5 | Dining Area | 7'7" x 8'2" | 62 sq. ft | Yes |
| 6 | Bath | 5'1" x 8'3" | 42 sq. ft | Yes |
| 7 | Bedroom | 10'3" x 11'3" | 99 sq. ft | Yes |
| 8 | Bedroom | 9'3" x 11'7" | 107 sq. ft | Yes |
| 9 | Primary Bedroom | 10'10" x 11'6" | 125 sq. ft | Yes |
| 10 | Kitchen | 11'10" x 11'11" | 122 sq. ft | Yes |
| 11 | Bath | 7'6" x 8'6" | 57 sq. ft | Yes |

Scan captured on Sun, 16 Feb 2025 16:30:27 GMT

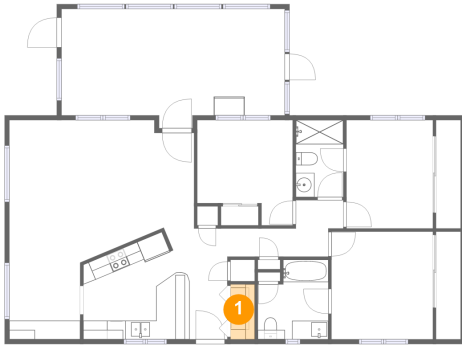
Information is calculated by Cubicasa technology deemed highly reliable but not guaranteed.

4351 Larch Loop NE, Salem, OR, US

| # | | Dimensions | sqft | Counted as living area |
|----|----------------|----------------|------------|------------------------|
| 12 | Screened Porch | 23'11" x 12'9" | 277 sq. ft | No |

4351 Larch Loop NE, Salem, OR, US

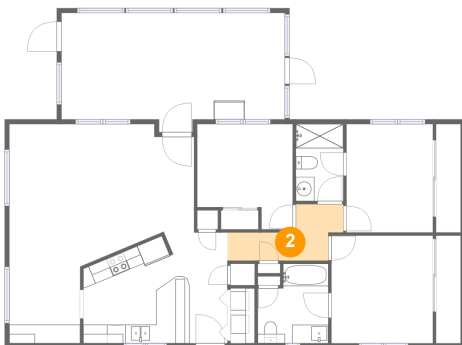
1 Floor 1 - Laundry



Dimensions: 2'7" x 5'10"
Area: 15 sq. ft
Counted as living area: Yes

Heated: Yes
Finished: Yes
Enclosed: Yes
Contiguous: Yes
Permitted: Yes
Wet space: No
Addition: No
Conversion: No

2 Floor 1 - Hall

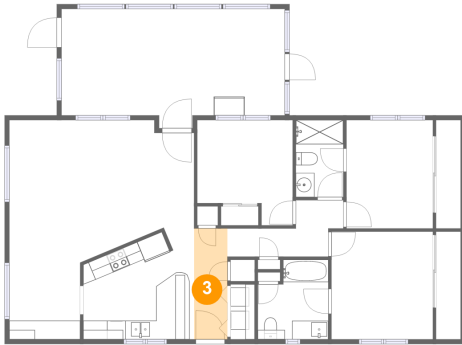


Dimensions: 10'10" x 6'0"
Area: 48 sq. ft
Counted as living area: Yes

Heated: Yes
Finished: Yes
Enclosed: Yes
Contiguous: Yes
Permitted: Yes
Wet space: No
Addition: No
Conversion: No

4351 Larch Loop NE, Salem, OR, US

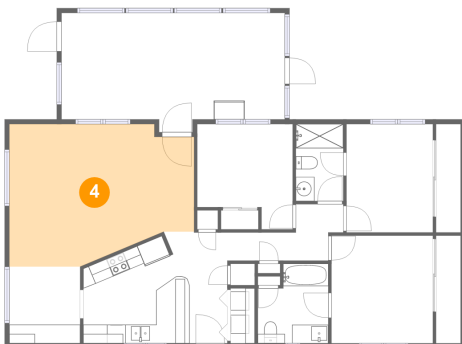
3 Floor 1 - Foyer



Dimensions: 3'6" x 11'10"
Area: 42 sq. ft
Counted as living area: Yes

Heated: Yes
Finished: Yes
Enclosed: Yes
Contiguous: Yes
Permitted: Yes
Wet space: No
Addition: No
Conversion: No

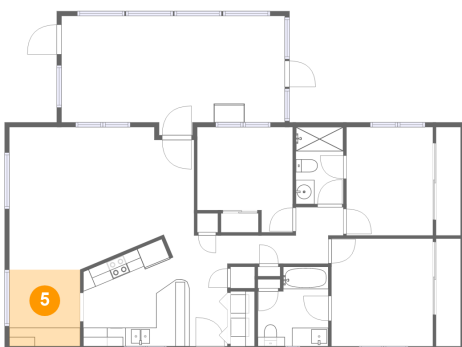
4 Floor 1 - Living Room



Dimensions: 19'9" x 15'3"
Area: 266 sq. ft
Counted as living area: Yes

Heated: Yes
Finished: Yes
Enclosed: Yes
Contiguous: Yes
Permitted: Yes
Wet space: No
Addition: No
Conversion: No

5 Floor 1 - Dining Area

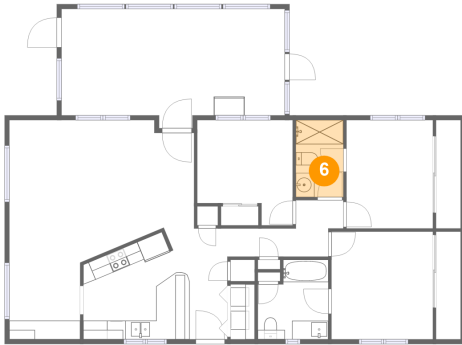


Dimensions: 7'7" x 8'2"
Area: 62 sq. ft
Counted as living area: Yes

Heated: Yes
Finished: Yes
Enclosed: Yes
Contiguous: Yes
Permitted: Yes
Wet space: No
Addition: No
Conversion: No

4351 Larch Loop NE, Salem, OR, US

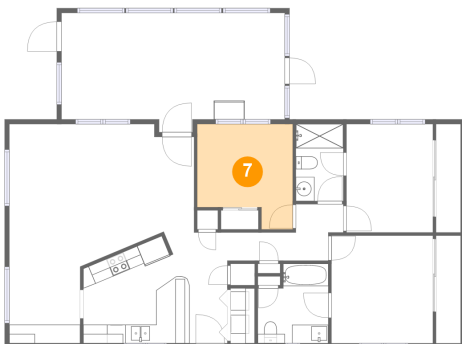
6 Floor 1 - Bath



Dimensions: 5'1" x 8'3"
Area: 42 sq. ft
Counted as living area: Yes

Heated: Yes
Finished: Yes
Enclosed: Yes
Contiguous: Yes
Permitted: Yes
Wet space: Yes
Addition: No
Conversion: No

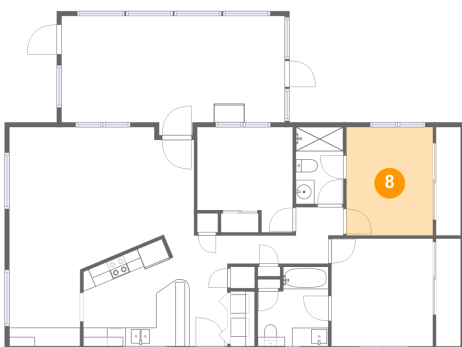
7 Floor 1 - Bedroom



Dimensions: 10'3" x 11'3"
Area: 99 sq. ft
Counted as living area: Yes

Heated: Yes
Finished: Yes
Enclosed: Yes
Contiguous: Yes
Permitted: Yes
Wet space: No
Addition: No
Conversion: No

8 Floor 1 - Bedroom

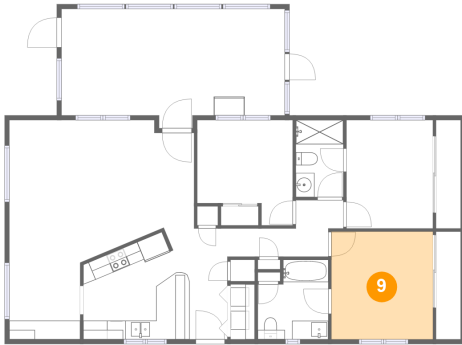


Dimensions: 9'3" x 11'7"
Area: 107 sq. ft
Counted as living area: Yes

Heated: Yes
Finished: Yes
Enclosed: Yes
Contiguous: Yes
Permitted: Yes
Wet space: No
Addition: No
Conversion: No

4351 Larch Loop NE, Salem, OR, US

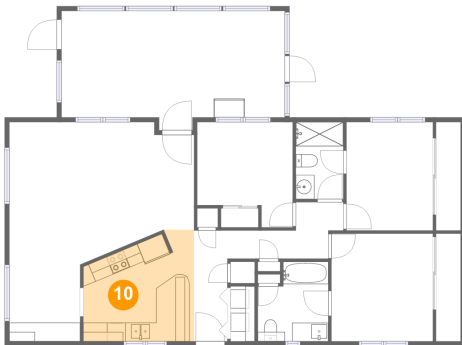
9 Floor 1 - Primary Bedroom



Dimensions: 10'10" x 11'6"
Area: 125 sq. ft
Counted as living area: Yes

Heated: Yes
Finished: Yes
Enclosed: Yes
Contiguous: Yes
Permitted: Yes
Wet space: No
Addition: No
Conversion: No

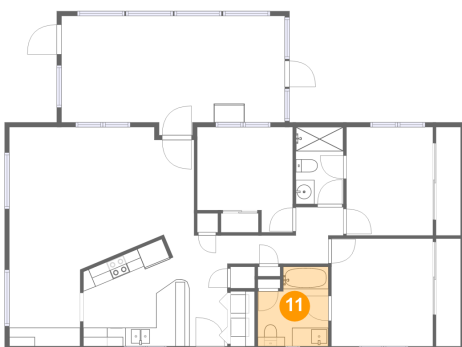
10 Floor 1 - Kitchen



Dimensions: 11'10" x 11'11"
Area: 122 sq. ft
Counted as living area: Yes

Heated: Yes
Finished: Yes
Enclosed: Yes
Contiguous: Yes
Permitted: Yes
Wet space: No
Addition: No
Conversion: No

11 Floor 1 - Bath

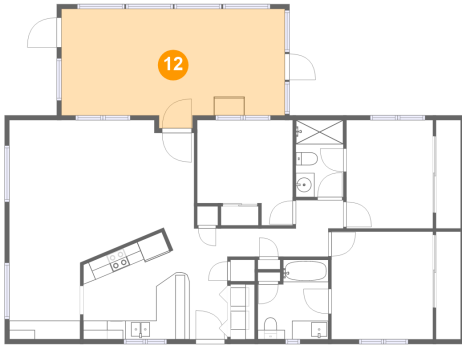


Dimensions: 7'6" x 8'6"
Area: 57 sq. ft
Counted as living area: Yes

Heated: Yes
Finished: Yes
Enclosed: Yes
Contiguous: Yes
Permitted: Yes
Wet space: Yes
Addition: No
Conversion: No

4351 Larch Loop NE, Salem, OR, US

12 Floor 1 - Screened Porch



Dimensions: 23'11" x 12'9"
Area: 277 sq. ft
Counted as living area: No

Heated: No
Finished: Yes
Enclosed: No
Contiguous: Yes
Permitted: Yes
Wet space: No
Addition: No
Conversion: No