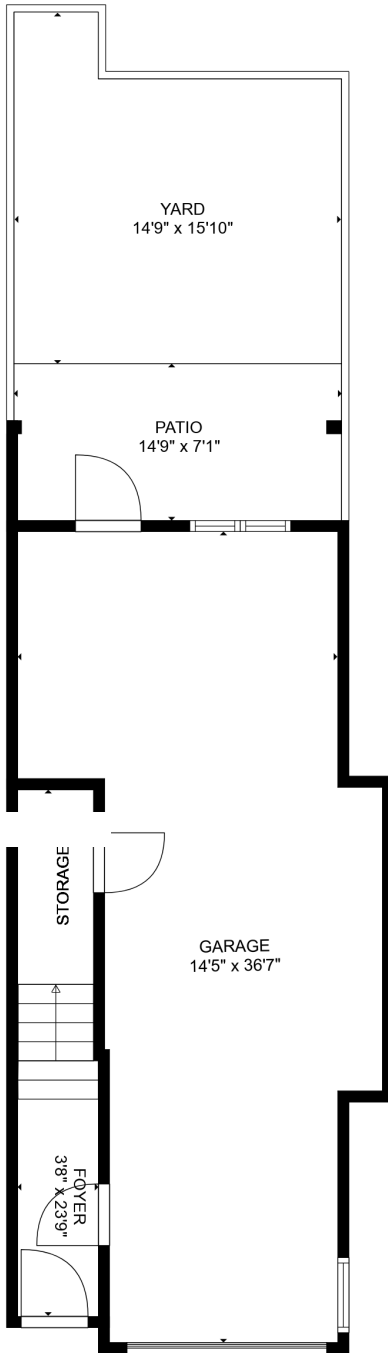


24-31032 Westridge Pl

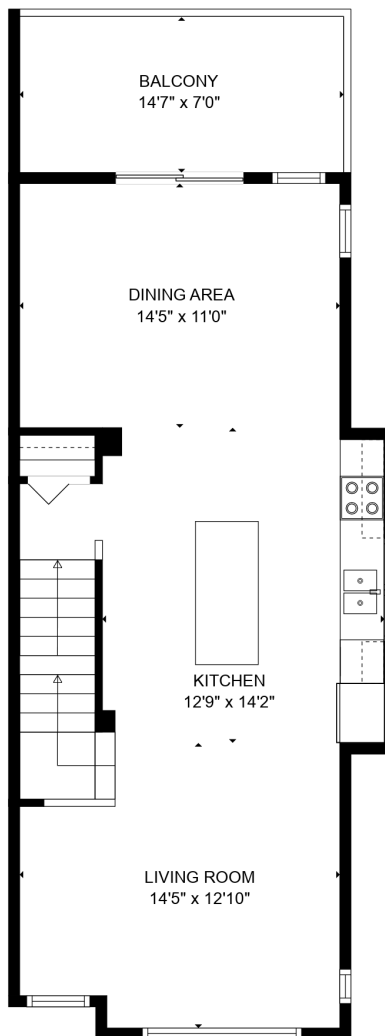
Coquitlam, BC

MAIN FLOOR 2,202 SQ.FT.
LOWER FLOOR 1,629 SQ.FT.
UPPER FLOOR 1,618 SQ.FT.
TOTAL LIVING AREA 5,449 SQ.FT.

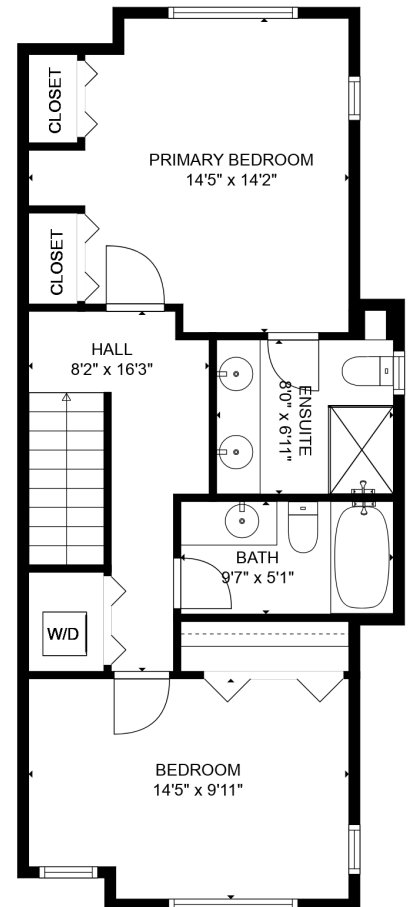
BALCONY 291 SQ.FT.
GARAGE 698 SQ.FT.
TOTAL 6,438 SQ.FT.



LOWER FLOOR
1,629 SQ.FT.



MAIN FLOOR
2,202 SQ.FT.



UPPER FLOOR
1,618 SQ.FT.

