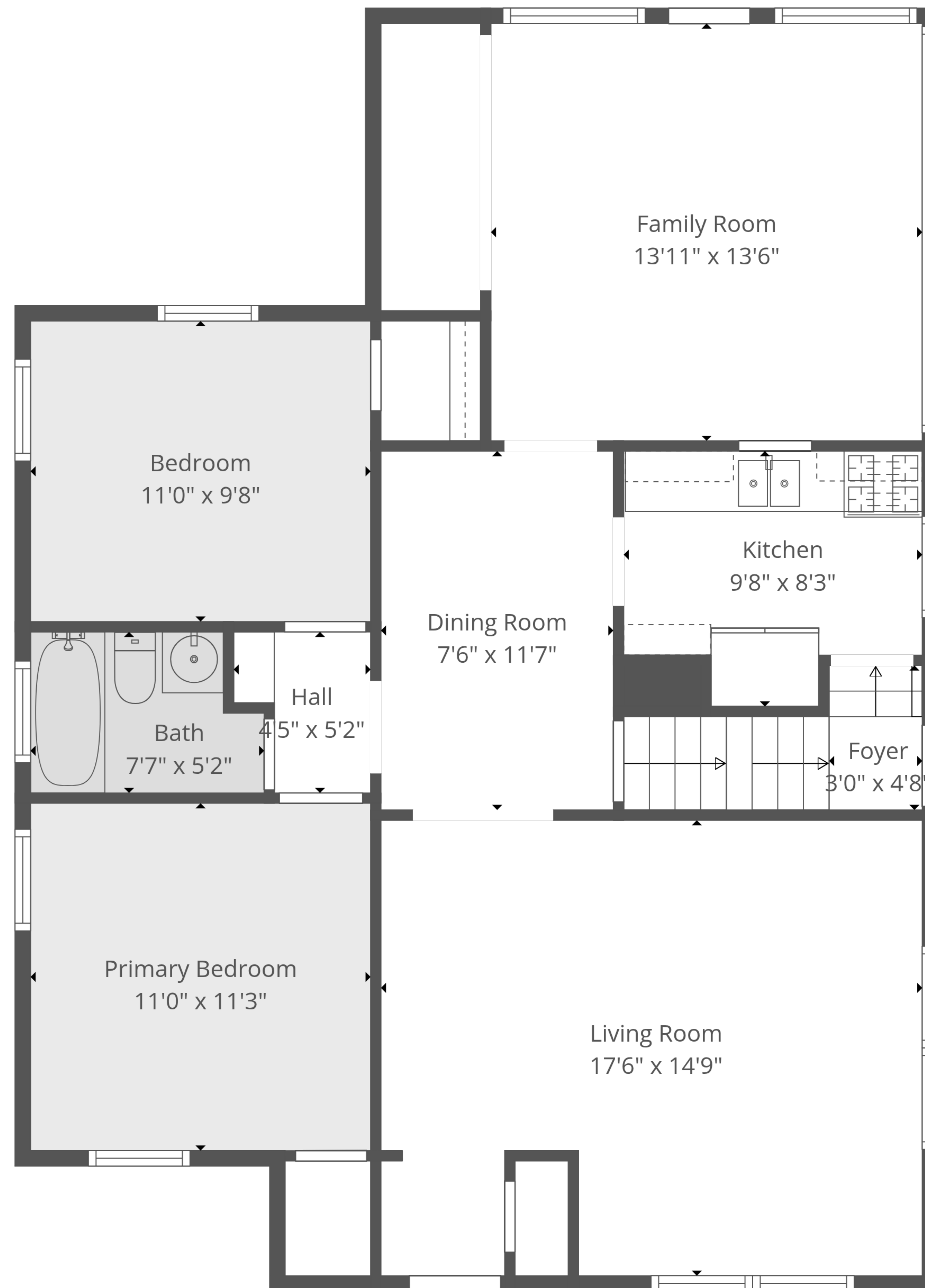


TOTAL: 1023 sq. ft

BELOW GRADE: 0 sq. ft, 1st floor: 1023 sq. ft, 2nd floor: 0 sq. ft
EXCLUDED AREAS: BASEMENT: 795 sq. ft, LOW CEILING: 272 sq. ft, ATTIC: 221 sq. ft,
WALLS: 178 sq. ft





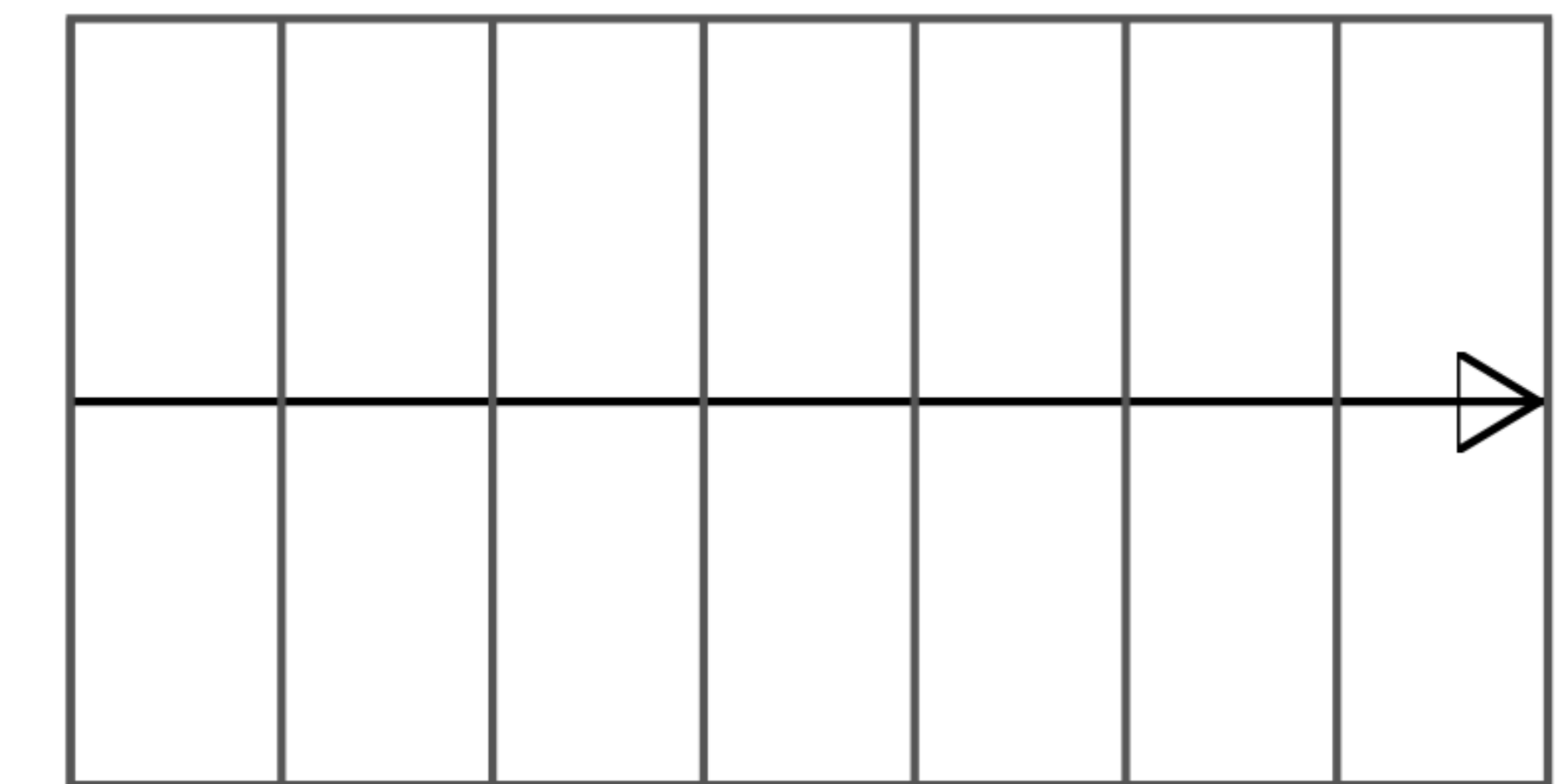
TOTAL: 1023 sq. ft

BELOW GRADE: 0 sq. ft, 1st floor: 1023 sq. ft, 2nd floor: 0 sq. ft

EXCLUDED AREAS: BASEMENT: 795 sq. ft, LOW CEILING: 272 sq. ft, ATTIC: 221 sq. ft,
WALLS: 178 sq. ft

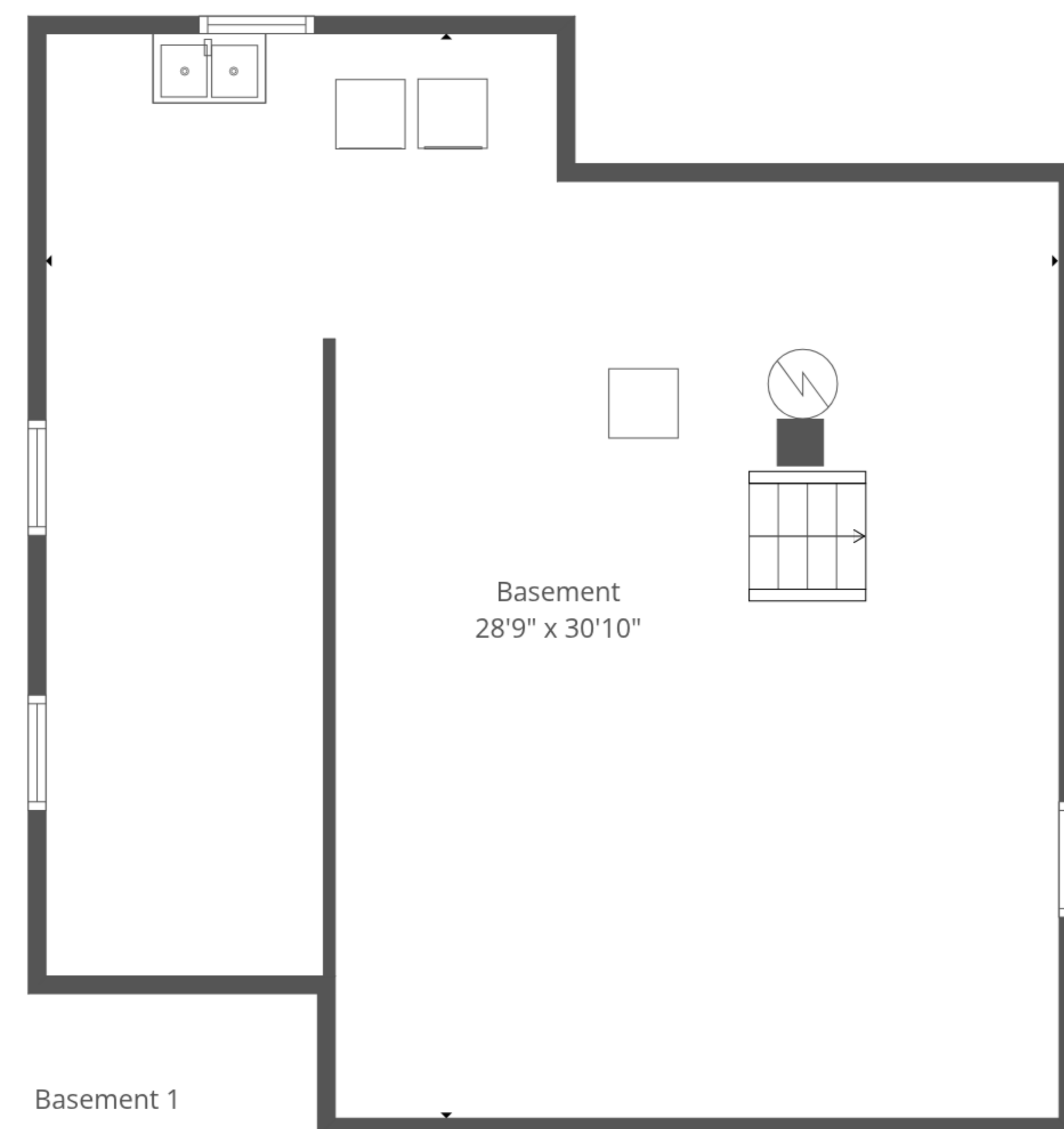
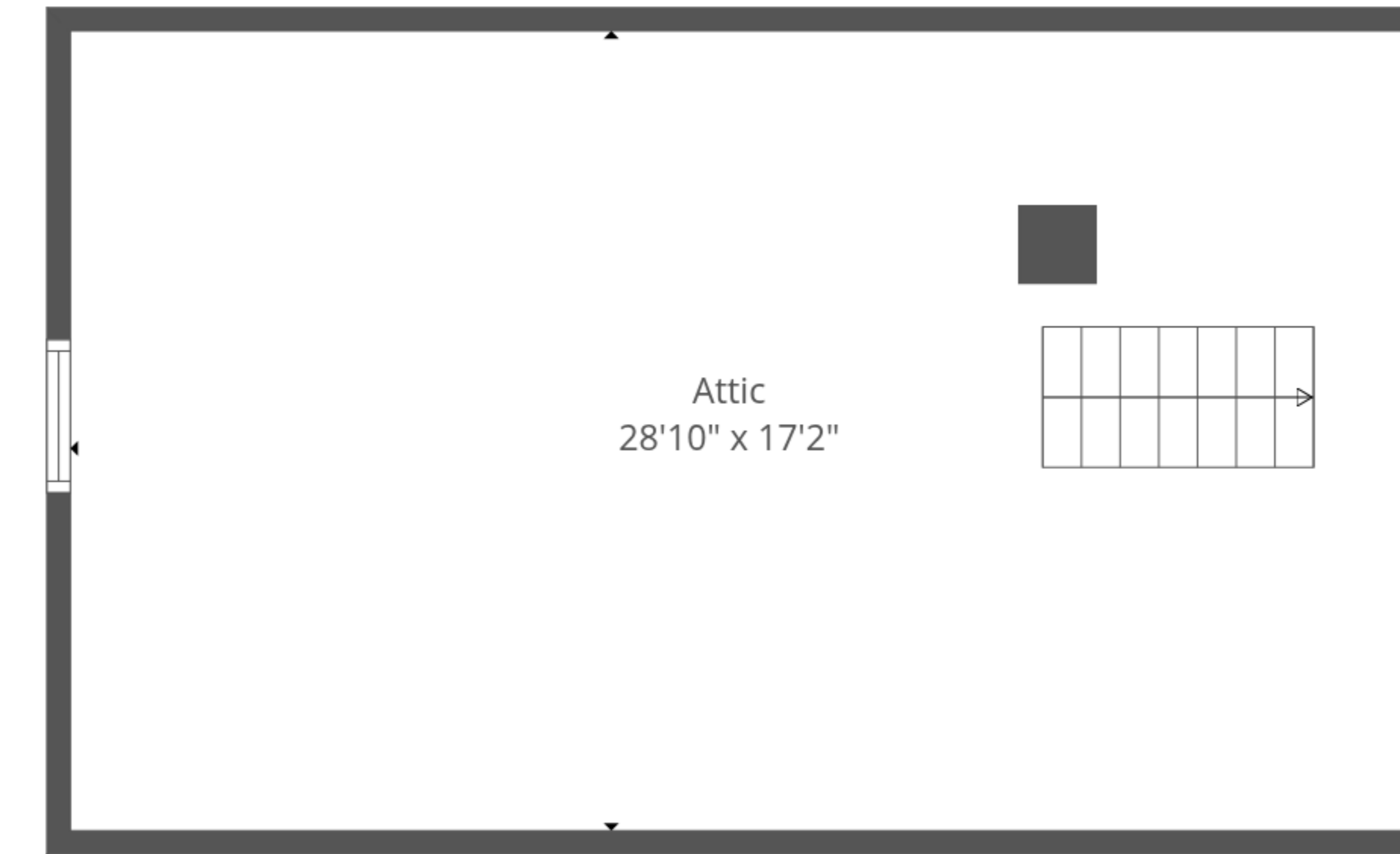
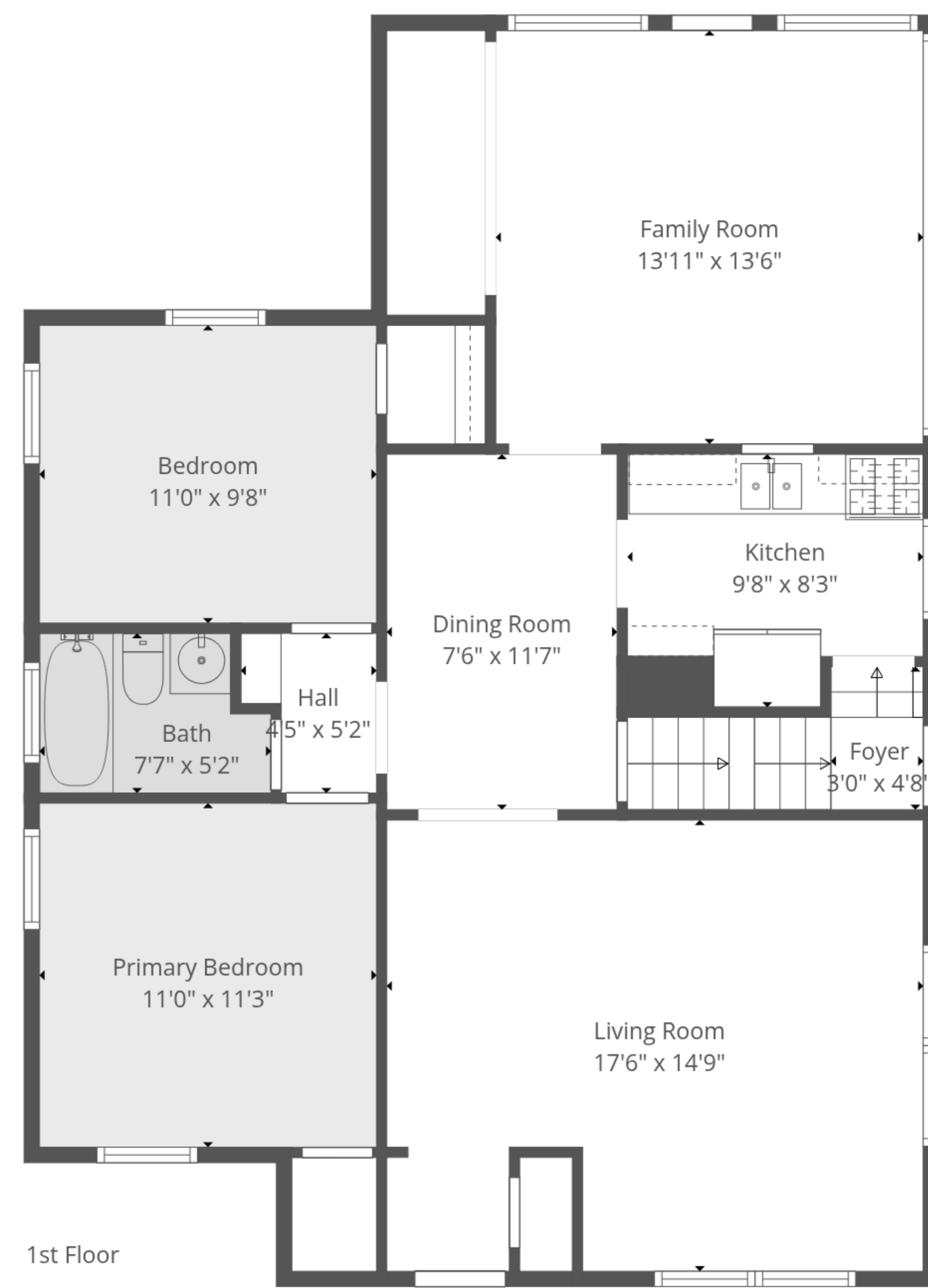


Attic
28'10" x 17'2"



TOTAL: 1023 sq. ft
BELOW GRADE: 0 sq. ft, 1st floor: 1023 sq. ft, 2nd floor: 0 sq. ft
EXCLUDED AREAS: BASEMENT: 795 sq. ft, LOW CEILING: 272 sq. ft, ATTIC: 221 sq. ft,
WALLS: 178 sq. ft





TOTAL: 1023 sq. ft
 BELOW GRADE: 0 sq. ft, 1st floor: 1023 sq. ft, 2nd floor: 0 sq. ft
 EXCLUDED AREAS: BASEMENT: 795 sq. ft, LOW CEILING: 272 sq. ft, ATTIC: 221 sq. ft,
 WALLS: 178 sq. ft

