

VICINITY MAP  
SECTION 29, 30, 31, 32, T4N, R46E, 1/4  
SECTION 29, 30, 31, 32, T5N, R46E, 1/4  
SECTION 29, 30, 31, 32, T4N, R47E, 1/4  
SECTION 29, 30, 31, 32, T5N, R47E, 1/4

114935  
AS THE ESTATE OF  
*Arthur Chebur*  
WAS DECEASED  
DATE: *Nov. 9, 1995*  
*Alan J. Drake*  
BY: *Mrs. R. R. Rhy*

# SHOOTING STAR RANCH SUBDIVISION - PHASE I ADDENDUM PLAT

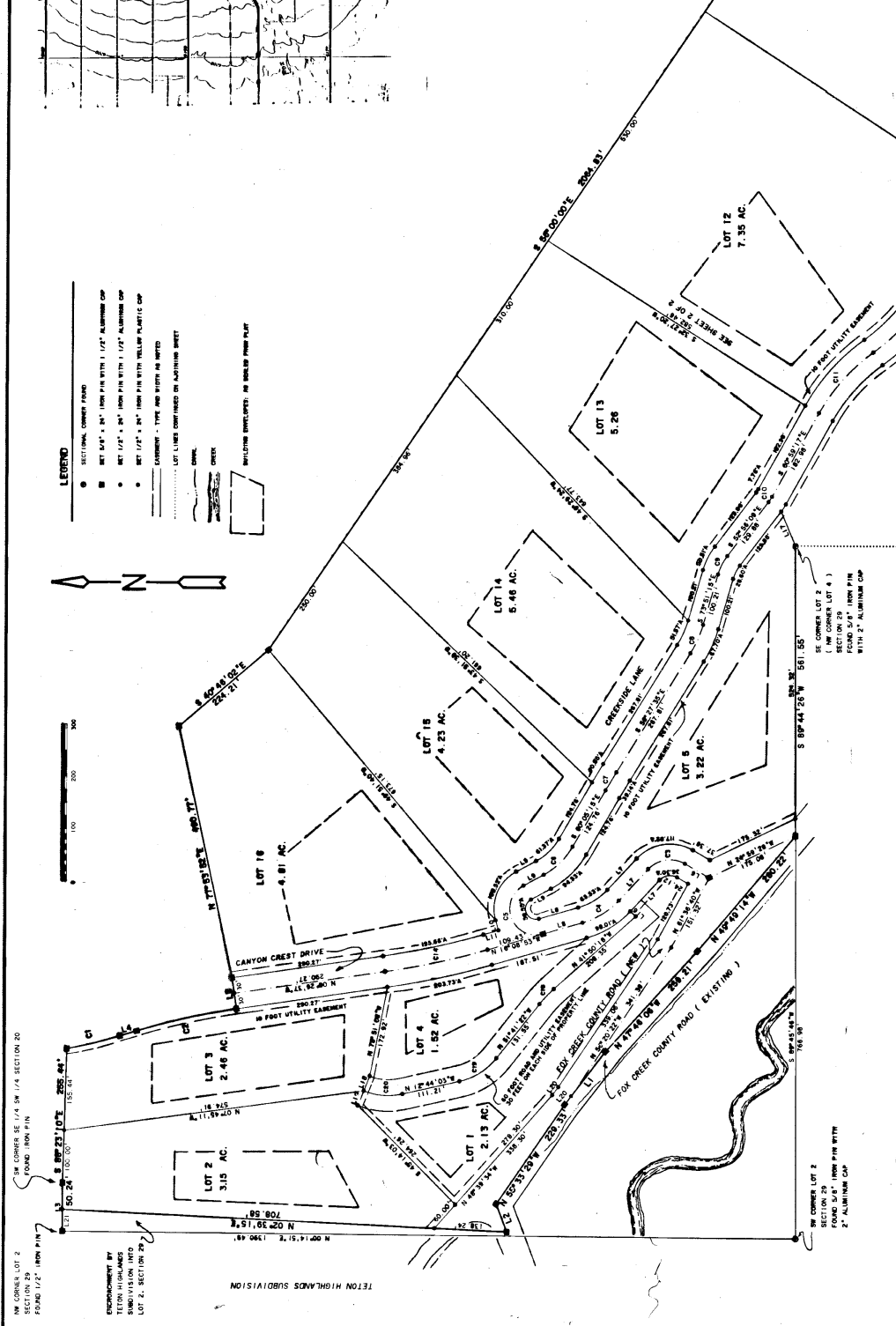
PORTIONS OF LOTS 1, 2 AND 4 OF SECTION 29,  
TWP. 4N., RANG. 46E., B.M., TETON COUNTY,  
IDAHO

A W ENGINEERING  
P. O. BOX 139  
VICTOR, IDAHO 83455  
208-787-2952  
DRAWN: BSL 7-29-93 SHEET 1 OF 2  
SURVEYED: AMW 8-22-93 PROJECT: 91 - BB

OWNERS: JOHN C. GRABO  
LAURA M. GRABO

DEVELOPER: MARK ROCKEFELLER

- LEGEND**
- SECTIONAL CORNER MARK
  - SET 1/4" = 84' FROM P.M. WITH 1/4" ALUMINUM COP
  - SET 1/4" = 84' FROM P.M. WITH 1/4" ALUMINUM COP
  - SET 1/4" = 84' FROM P.M. WITH YELLOW PLASTIC COP
  - COMMENT - TYPE AND SIZE AS SHOWN
  - LOT LINES CONTAINED ON ADJACENT SHEET
  - CONVEYANCE
  - CHUNK
  - CHUNK
  - ENCLOSURE ENVELOPES: AS SHOWN FROM PLAT



CURVE DATA TABLE

LINE	START	END	CHORD BEARING	DISTANCE
1	S 89°44'26"W	581.55'	S 89°44'26"W	581.55'
2	S 89°44'26"W	581.55'	S 89°44'26"W	581.55'
3	S 89°44'26"W	581.55'	S 89°44'26"W	581.55'
4	S 89°44'26"W	581.55'	S 89°44'26"W	581.55'
5	S 89°44'26"W	581.55'	S 89°44'26"W	581.55'
6	S 89°44'26"W	581.55'	S 89°44'26"W	581.55'
7	S 89°44'26"W	581.55'	S 89°44'26"W	581.55'
8	S 89°44'26"W	581.55'	S 89°44'26"W	581.55'
9	S 89°44'26"W	581.55'	S 89°44'26"W	581.55'
10	S 89°44'26"W	581.55'	S 89°44'26"W	581.55'
11	S 89°44'26"W	581.55'	S 89°44'26"W	581.55'
12	S 89°44'26"W	581.55'	S 89°44'26"W	581.55'
13	S 89°44'26"W	581.55'	S 89°44'26"W	581.55'
14	S 89°44'26"W	581.55'	S 89°44'26"W	581.55'
15	S 89°44'26"W	581.55'	S 89°44'26"W	581.55'
16	S 89°44'26"W	581.55'	S 89°44'26"W	581.55'
17	S 89°44'26"W	581.55'	S 89°44'26"W	581.55'
18	S 89°44'26"W	581.55'	S 89°44'26"W	581.55'
19	S 89°44'26"W	581.55'	S 89°44'26"W	581.55'
20	S 89°44'26"W	581.55'	S 89°44'26"W	581.55'

LINE DATA TABLE

LINE	START	END	CHORD BEARING	DISTANCE
1	S 89°44'26"W	581.55'	S 89°44'26"W	581.55'
2	S 89°44'26"W	581.55'	S 89°44'26"W	581.55'
3	S 89°44'26"W	581.55'	S 89°44'26"W	581.55'
4	S 89°44'26"W	581.55'	S 89°44'26"W	581.55'
5	S 89°44'26"W	581.55'	S 89°44'26"W	581.55'
6	S 89°44'26"W	581.55'	S 89°44'26"W	581.55'
7	S 89°44'26"W	581.55'	S 89°44'26"W	581.55'
8	S 89°44'26"W	581.55'	S 89°44'26"W	581.55'
9	S 89°44'26"W	581.55'	S 89°44'26"W	581.55'
10	S 89°44'26"W	581.55'	S 89°44'26"W	581.55'
11	S 89°44'26"W	581.55'	S 89°44'26"W	581.55'
12	S 89°44'26"W	581.55'	S 89°44'26"W	581.55'
13	S 89°44'26"W	581.55'	S 89°44'26"W	581.55'
14	S 89°44'26"W	581.55'	S 89°44'26"W	581.55'
15	S 89°44'26"W	581.55'	S 89°44'26"W	581.55'
16	S 89°44'26"W	581.55'	S 89°44'26"W	581.55'
17	S 89°44'26"W	581.55'	S 89°44'26"W	581.55'
18	S 89°44'26"W	581.55'	S 89°44'26"W	581.55'
19	S 89°44'26"W	581.55'	S 89°44'26"W	581.55'
20	S 89°44'26"W	581.55'	S 89°44'26"W	581.55'

ENCLOSURE BY TETON HIGHLANDS SUBDIVISION INTO LOT 2, SECTION 29, TWP. 4N., RANG. 46E., B.M., TETON COUNTY, IDAHO

ENCLOSURE BY TETON HIGHLANDS SUBDIVISION INTO LOT 4, SECTION 29, TWP. 4N., RANG. 46E., B.M., TETON COUNTY, IDAHO

ENCLOSURE BY TETON HIGHLANDS SUBDIVISION INTO LOT 1, SECTION 29, TWP. 4N., RANG. 46E., B.M., TETON COUNTY, IDAHO

ENCLOSURE BY TETON HIGHLANDS SUBDIVISION INTO LOT 3, SECTION 29, TWP. 4N., RANG. 46E., B.M., TETON COUNTY, IDAHO

ENCLOSURE BY TETON HIGHLANDS SUBDIVISION INTO LOT 5, SECTION 29, TWP. 4N., RANG. 46E., B.M., TETON COUNTY, IDAHO

ENCLOSURE BY TETON HIGHLANDS SUBDIVISION INTO LOT 6, SECTION 29, TWP. 4N., RANG. 46E., B.M., TETON COUNTY, IDAHO

ENCLOSURE BY TETON HIGHLANDS SUBDIVISION INTO LOT 7, SECTION 29, TWP. 4N., RANG. 46E., B.M., TETON COUNTY, IDAHO

ENCLOSURE BY TETON HIGHLANDS SUBDIVISION INTO LOT 8, SECTION 29, TWP. 4N., RANG. 46E., B.M., TETON COUNTY, IDAHO

ENCLOSURE BY TETON HIGHLANDS SUBDIVISION INTO LOT 9, SECTION 29, TWP. 4N., RANG. 46E., B.M., TETON COUNTY, IDAHO

ENCLOSURE BY TETON HIGHLANDS SUBDIVISION INTO LOT 10, SECTION 29, TWP. 4N., RANG. 46E., B.M., TETON COUNTY, IDAHO

ENCLOSURE BY TETON HIGHLANDS SUBDIVISION INTO LOT 11, SECTION 29, TWP. 4N., RANG. 46E., B.M., TETON COUNTY, IDAHO

ENCLOSURE BY TETON HIGHLANDS SUBDIVISION INTO LOT 12, SECTION 29, TWP. 4N., RANG. 46E., B.M., TETON COUNTY, IDAHO

ENCLOSURE BY TETON HIGHLANDS SUBDIVISION INTO LOT 13, SECTION 29, TWP. 4N., RANG. 46E., B.M., TETON COUNTY, IDAHO

ENCLOSURE BY TETON HIGHLANDS SUBDIVISION INTO LOT 14, SECTION 29, TWP. 4N., RANG. 46E., B.M., TETON COUNTY, IDAHO

ENCLOSURE BY TETON HIGHLANDS SUBDIVISION INTO LOT 15, SECTION 29, TWP. 4N., RANG. 46E., B.M., TETON COUNTY, IDAHO

ENCLOSURE BY TETON HIGHLANDS SUBDIVISION INTO LOT 16, SECTION 29, TWP. 4N., RANG. 46E., B.M., TETON COUNTY, IDAHO

ENCLOSURE BY TETON HIGHLANDS SUBDIVISION INTO LOT 17, SECTION 29, TWP. 4N., RANG. 46E., B.M., TETON COUNTY, IDAHO

ENCLOSURE BY TETON HIGHLANDS SUBDIVISION INTO LOT 18, SECTION 29, TWP. 4N., RANG. 46E., B.M., TETON COUNTY, IDAHO

ENCLOSURE BY TETON HIGHLANDS SUBDIVISION INTO LOT 19, SECTION 29, TWP. 4N., RANG. 46E., B.M., TETON COUNTY, IDAHO

ENCLOSURE BY TETON HIGHLANDS SUBDIVISION INTO LOT 20, SECTION 29, TWP. 4N., RANG. 46E., B.M., TETON COUNTY, IDAHO

**COMMISSIONER'S CERTIFICATE**  
 PRESENTED TO THE TETON COUNTY BOARD OF COMMISSIONERS ON THE  
 9/27/93 DATE  
 AND ACCEPTED BY THE BOARD OF COMMISSIONERS  
 TETON COUNTY COMMISSIONERS

**OWNER'S CERTIFICATE**  
 I, John C. Grabo, DO hereby certify that all the described portions of the tract of land as  
 herein plat-ed and described, and that this addendum plat is  
 correct and true to the original survey and that the same  
 has been prepared by a duly licensed and qualified surveyor  
 and that the descriptive contents and conditions as filed in the office  
 of the county clerk are correct and true to the original survey and  
 that the same are in accordance with the laws of the State of Idaho  
 and that I am the owner of the land herein described in this  
 addendum plat.  
John C. Grabo  
 OWNER

STATE OF IDAHO  
 COUNTY OF TETON  
 THE FOREGOING INSTRUMENT WAS ACKNOWLEDGED BEFORE ME THIS 3 DAY  
 OF September, 1993, WITNESSED BY HAND AND OFFICIAL SEAL.  
David M. Heston  
 COUNTY CLERK

BY COMMISSIONER EMPLOYED 6/1/93  
 COUNTY CLERK



**SURVEYOR'S CERTIFICATE**  
 I, David M. Heston, DO hereby certify that I am a duly licensed and qualified surveyor  
 and that the above described portions of the tract of land as herein  
 described in this addendum plat are in accordance with the laws of the State of Idaho  
 and that the same are in accordance with the laws of the State of Idaho  
 and that I am the owner of the land herein described in this  
 addendum plat.

**NOTICE**  
 THIS ADDENDUM PLAT SHOWS THE FOLLOWING LOTS: 4, 5, 6, 7, 8, 9, 10, 11, 12, 13, 14, 15, 16, 17, 18, 19, 20, 21, 22, 23, 24, 25, 26, 27, 28, 29, 30, 31, 32, 33, 34, 35, 36, 37, 38, 39, 40, 41, 42, 43, 44, 45, 46, 47, 48, 49, 50, 51, 52, 53, 54, 55, 56, 57, 58, 59, 60, 61, 62, 63, 64, 65, 66, 67, 68, 69, 70, 71, 72, 73, 74, 75, 76, 77, 78, 79, 80, 81, 82, 83, 84, 85, 86, 87, 88, 89, 90, 91, 92, 93, 94, 95, 96, 97, 98, 99, 100, 101, 102, 103, 104, 105, 106, 107, 108, 109, 110, 111, 112, 113, 114, 115, 116, 117, 118, 119, 120, 121, 122, 123, 124, 125, 126, 127, 128, 129, 130, 131, 132, 133, 134, 135, 136, 137, 138, 139, 140, 141, 142, 143, 144, 145, 146, 147, 148, 149, 150, 151, 152, 153, 154, 155, 156, 157, 158, 159, 160, 161, 162, 163, 164, 165, 166, 167, 168, 169, 170, 171, 172, 173, 174, 175, 176, 177, 178, 179, 180, 181, 182, 183, 184, 185, 186, 187, 188, 189, 190, 191, 192, 193, 194, 195, 196, 197, 198, 199, 200, 201, 202, 203, 204, 205, 206, 207, 208, 209, 210, 211, 212, 213, 214, 215, 216, 217, 218, 219, 220, 221, 222, 223, 224, 225, 226, 227, 228, 229, 230, 231, 232, 233, 234, 235, 236, 237, 238, 239, 240, 241, 242, 243, 244, 245, 246, 247, 248, 249, 250, 251, 252, 253, 254, 255, 256, 257, 258, 259, 260, 261, 262, 263, 264, 265, 266, 267, 268, 269, 270, 271, 272, 273, 274, 275, 276, 277, 278, 279, 280, 281, 282, 283, 284, 285, 286, 287, 288, 289, 290, 291, 292, 293, 294, 295, 296, 297, 298, 299, 300, 301, 302, 303, 304, 305, 306, 307, 308, 309, 310, 311, 312, 313, 314, 315, 316, 317, 318, 319, 320, 321, 322, 323, 324, 325, 326, 327, 328, 329, 330, 331, 332, 333, 334, 335, 336, 337, 338, 339, 340, 341, 342, 343, 344, 345, 346, 347, 348, 349, 350, 351, 352, 353, 354, 355, 356, 357, 358, 359, 360, 361, 362, 363, 364, 365, 366, 367, 368, 369, 370, 371, 372, 373, 374, 375, 376, 377, 378, 379, 380, 381, 382, 383, 384, 385, 386, 387, 388, 389, 390, 391, 392, 393, 394, 395, 396, 397, 398, 399, 400, 401, 402, 403, 404, 405, 406, 407, 408, 409, 410, 411, 412, 413, 414, 415, 416, 417, 418, 419, 420, 421, 422, 423, 424, 425, 426, 427, 428, 429, 430, 431, 432, 433, 434, 435, 436, 437, 438, 439, 440, 441, 442, 443, 444, 445, 446, 447, 448, 449, 450, 451, 452, 453, 454, 455, 456, 457, 458, 459, 460, 461, 462, 463, 464, 465, 466, 467, 468, 469, 470, 471, 472, 473, 474, 475, 476, 477, 478, 479, 480, 481, 482, 483, 484, 485, 486, 487, 488, 489, 490, 491, 492, 493, 494, 495, 496, 497, 498, 499, 500, 501, 502, 503, 504, 505, 506, 507, 508, 509, 510, 511, 512, 513, 514, 515, 516, 517, 518, 519, 520, 521, 522, 523, 524, 525, 526, 527, 528, 529, 530, 531, 532, 533, 534, 535, 536, 537, 538, 539, 540, 541, 542, 543, 544, 545, 546, 547, 548, 549, 550, 551, 552, 553, 554, 555, 556, 557, 558, 559, 560, 561, 562, 563, 564, 565, 566, 567, 568, 569, 570, 571, 572, 573, 574, 575, 576, 577, 578, 579, 580, 581, 582, 583, 584, 585, 586, 587, 588, 589, 590, 591, 592, 593, 594, 595, 596, 597, 598, 599, 600, 601, 602, 603, 604, 605, 606, 607, 608, 609, 610, 611, 612, 613, 614, 615, 616, 617, 618, 619, 620, 621, 622, 623, 624, 625, 626, 627, 628, 629, 630, 631, 632, 633, 634, 635, 636, 637, 638, 639, 640, 641, 642, 643, 644, 645, 646, 647, 648, 649, 650, 651, 652, 653, 654, 655, 656, 657, 658, 659, 660, 661, 662, 663, 664, 665, 666, 667, 668, 669, 670, 671, 672, 673, 674, 675, 676, 677, 678, 679, 680, 681, 682, 683, 684, 685, 686, 687, 688, 689, 690, 691, 692, 693, 694, 695, 696, 697, 698, 699, 700, 701, 702, 703, 704, 705, 706, 707, 708, 709, 710, 711, 712, 713, 714, 715, 716, 717, 718, 719, 720, 721, 722, 723, 724, 725, 726, 727, 728, 729, 730, 731, 732, 733, 734, 735, 736, 737, 738, 739, 740, 741, 742, 743, 744, 745, 746, 747, 748, 749, 750, 751, 752, 753, 754, 755, 756, 757, 758, 759, 760, 761, 762, 763, 764, 765, 766, 767, 768, 769, 770, 771, 772, 773, 774, 775, 776, 777, 778, 779, 780, 781, 782, 783, 784, 785, 786, 787, 788, 789, 790, 791, 792, 793, 794, 795, 796, 797, 798, 799, 800, 801, 802, 803, 804, 805, 806, 807, 808, 809, 810, 811, 812, 813, 814, 815, 816, 817, 818, 819, 820, 821, 822, 823, 824, 825, 826, 827, 828, 829, 830, 831, 832, 833, 834, 835, 836, 837, 838, 839, 840, 841, 842, 843, 844, 845, 846, 847, 848, 849, 850, 851, 852, 853, 854, 855, 856, 857, 858, 859, 860, 861, 862, 863, 864, 865, 866, 867, 868, 869, 870, 871, 872, 873, 874, 875, 876, 877, 878, 879, 880, 881, 882, 883, 884, 885, 886, 887, 888, 889, 890, 891, 892, 893, 894, 895, 896, 897, 898, 899, 900, 901, 902, 903, 904, 905, 906, 907, 908, 909, 910, 911, 912, 913, 914, 915, 916, 917, 918, 919, 920, 921, 922, 923, 924, 925, 926, 927, 928, 929, 930, 931, 932, 933, 934, 935, 936, 937, 938, 939, 940, 941, 942, 943, 944, 945, 946, 947, 948, 949, 950, 951, 952, 953, 954, 955, 956, 957, 958, 959, 960, 961, 962, 963, 964, 965, 966, 967, 968, 969, 970, 971, 972, 973, 974, 975, 976, 977, 978, 979, 980, 981, 982, 983, 984, 985, 986, 987, 988, 989, 990, 991, 992, 993, 994, 995, 996, 997, 998, 999, 1000, 1001, 1002, 1003, 1004, 1005, 1006, 1007, 1008, 1009, 1010, 1011, 1012, 1013, 1014, 1015, 1016, 1017, 1018, 1019, 1020, 1021, 1022, 1023, 1024, 1025, 1026, 1027, 1028, 1029, 1030, 1031, 1032, 1033, 1034, 1035, 1036, 1037, 1038, 1039, 1040, 1041, 1042, 1043, 1044, 1045, 1046, 1047, 1048, 1049, 1050, 1051, 1052, 1053, 1054, 1055, 1056, 1057, 1058, 1059, 1060, 1061, 1062, 1063, 1064, 1065, 1066, 1067, 1068, 1069, 1070, 1071, 1072, 1073, 1074, 1075, 1076, 1077, 1078, 1079, 1080, 1081, 1082, 1083, 1084, 1085, 1086, 1087, 1088, 1089, 1090, 1091, 1092, 1093, 1094, 1095, 1096, 1097, 1098, 1099, 1100, 1101, 1102, 1103, 1104, 1105, 1106, 1107, 1108, 1109, 1110, 1111, 1112, 1113, 1114, 1115, 1116, 1117, 1118, 1119, 1120, 1121, 1122, 1123, 1124, 1125, 1126, 1127, 1128, 1129, 1130, 1131, 1132, 1133, 1134, 1135, 1136, 1137, 1138, 1139, 1140, 1141, 1142, 1143, 1144, 1145, 1146, 1147, 1148, 1149, 1150, 1151, 1152, 1153, 1154, 1155, 1156, 1157, 1158, 1159, 1160, 1161, 1162, 1163, 1164, 1165, 1166, 1167, 1168, 1169, 1170, 1171, 1172, 1173, 1174, 1175, 1176, 1177, 1178, 1179, 1180, 1181, 1182, 1183, 1184, 1185, 1186, 1187, 1188, 1189, 1190, 1191, 1192, 1193, 1194, 1195, 1196, 1197, 1198, 1199, 1200, 1201, 1202, 1203, 1204, 1205, 1206, 1207, 1208, 1209, 1210, 1211, 1212, 1213, 1214, 1215, 1216, 1217, 1218, 1219, 1220, 1221, 1222, 1223, 1224, 1225, 1226, 1227, 1228, 1229, 1230, 1231, 1232, 1233, 1234, 1235, 1236, 1237, 1238, 1239, 1240, 1241, 1242, 1243, 1244, 1245, 1246, 1247, 1248, 1249, 1250, 1251, 1252, 1253, 1254, 1255, 1256, 1257, 1258, 1259, 1260, 1261, 1262, 1263, 1264, 1265, 1266, 1267, 1268, 1269, 1270, 1271, 1272, 1273, 1274, 1275, 1276, 1277, 1278, 1279, 1280, 1281, 1282, 1283, 1284, 1285, 1286, 1287, 1288, 1289, 1290, 1291, 1292, 1293, 1294, 1295, 1296, 1297, 1298, 1299, 1300, 1301, 1302, 1303, 1304, 1305, 1306, 1307, 1308, 1309, 1310, 1311, 1312, 1313, 1314, 1315, 1316, 1317, 1318, 1319, 1320, 1321, 1322, 1323, 1324, 1325, 1326, 1327, 1328, 1329, 1330, 1331, 1332, 1333, 1334, 1335, 1336, 1337, 1338, 1339, 1340, 1341, 1342, 1343, 1344, 1345, 1346, 1347, 1348, 1349, 1350, 1351, 1352, 1353, 1354, 1355, 1356, 1357, 1358, 1359, 1360, 1361, 1362, 1363, 1364, 1365, 1366, 1367, 1368, 1369, 1370, 1371, 1372, 1373, 1374, 1375, 1376, 1377, 1378, 1379, 1380, 1381, 1382, 1383, 1384, 1385, 1386, 1387, 1388, 1389, 1390, 1391, 1392, 1393, 1394, 1395, 1396, 1397, 1398, 1399, 1400, 1401, 1402, 1403, 1404, 1405, 1406, 1407, 1408, 1409, 1410, 1411, 1412, 1413, 1414, 1415, 1416, 1417, 1418, 1419, 1420, 1421, 1422, 1423, 1424, 1425, 1426, 1427, 1428, 1429, 1430, 1431, 1432, 1433, 1434, 1435, 1436, 1437, 1438, 1439, 1440, 1441, 1442, 1443, 1444, 1445, 1446, 1447, 1448, 1449, 1450, 1451, 1452, 1453, 1454, 1455, 1456, 1457, 1458, 1459, 1460, 1461, 1462, 1463, 1464, 1465, 1466, 1467, 1468, 1469, 1470, 1471, 1472, 1473, 1474, 1475, 1476, 1477, 1478, 1479, 1480, 1481, 1482, 1483, 1484, 1485, 1486, 1487, 1488, 1489, 1490, 1491, 1492, 1493, 1494, 1495, 1496, 1497, 1498, 1499, 1500, 1501, 1502, 1503, 1504, 1505, 1506, 1507, 1508, 1509, 1510, 1511, 1512, 1513, 1514, 1515, 1516, 1517, 1518, 1519, 1520, 1521, 1522, 1523, 1524, 1525, 1526, 1527, 1528, 1529, 1530, 1531, 1532, 1533, 1534, 1535, 1536, 1537, 1538, 1539, 1540, 1541, 1542, 1543, 1544, 1545, 1546, 1547, 1548, 1549, 1550, 1551, 1552, 1553, 1554, 1555, 1556, 1557, 1558, 1559, 1560, 1561, 1562, 1563, 1564, 1565, 1566, 1567, 1568, 1569, 1570, 1571, 1572, 1573, 1574, 1575, 1576, 1577, 1578, 1579, 1580, 1581, 1582, 1583, 1584, 1585, 1586, 1587, 1588, 1589, 1590, 1591, 1592, 1593, 1594, 1595, 1596, 1597, 1598, 1599, 1600, 1601, 1602, 1603, 1604, 1605, 1606, 1607, 1608, 1609, 1610, 1611, 1612, 1613, 1614, 1615, 1616, 1617, 1618, 1619, 1620, 1621, 1622, 1623, 1624, 1625, 1626, 1627, 1628, 1629, 1630, 1631, 1632, 1633, 1634, 1635, 1636, 1637, 1638, 1639, 1640, 1641, 1642, 1643, 1644, 1645, 1646, 1647, 1648, 1649, 1650, 1651, 1652, 1653, 1654, 1655, 1656, 1657, 1658, 1659, 1660, 1661, 1662, 1663, 1664, 1665, 1666, 1667, 1668, 1669, 1670, 1671, 1672, 1673, 1674, 1675, 1676, 1677, 1678, 1679, 1680, 1681, 1682, 1683, 1684, 1685, 1686, 1687, 1688, 1689, 1690, 1691, 1692, 1693, 1694, 1695, 1696, 1697, 1698, 1699, 1700, 1701, 1702, 1703, 1704, 1705, 1706, 1707, 1708, 1709, 1710, 1711, 1712, 1713, 1714, 1715, 1716, 1717, 1718, 1719, 1720, 1721, 1722, 1723, 1724, 1725, 1726, 1727, 1728, 1729, 1730, 1731, 1732, 1733, 1734, 1735, 1736, 1737, 1738, 1739, 1740, 1741, 1742, 1743, 1744, 1745, 1746, 1747, 1748, 1749, 1750, 1751, 1752, 1753, 1754, 1755, 1756, 1757, 1758, 1759, 1760, 1761, 1762, 1763, 1764, 1765, 1766, 1767, 1768, 1769, 1770, 1771, 1772, 1773, 1774, 1775, 1776, 1777, 1778, 1779, 1780, 1781, 1782, 1783, 1784, 1785, 1786, 1787, 1788, 1789, 1790, 1791, 1792, 1793, 1794, 1795, 1796, 1797, 1798, 1799, 1800, 1801, 1802, 1803, 1804, 1805, 1806, 1807, 1808, 1809, 1810, 1811, 1812, 1813, 1814, 1815, 1816, 1817, 1818, 1819, 1820, 1821, 1822, 1823, 1824, 1825, 1826, 1827, 1828, 1829, 1830, 1831, 1832, 1833, 1834, 1835, 1836, 1837, 1838, 1839, 1840, 1841, 1842, 1843, 1844, 1845, 1846, 1847, 1848, 1849, 1850, 1851, 1852, 1853, 1854, 1855, 1856, 1857, 1858, 1859, 1860, 1861, 1862, 1863, 1864, 1865, 1866, 1867, 1868, 1869, 1870, 1871, 1872, 1873, 1874, 1875, 1876, 1877, 1878, 1879, 1880, 1881, 1882, 1883, 1884, 1885, 1886, 1887, 1888, 1889, 1890, 1891, 1892, 1893, 1894, 1895, 1896, 1897, 1898, 1899, 1900, 1901, 1902, 1903, 1904, 1905, 1906, 1907, 1908, 1909, 1910, 1911, 1912, 1913, 1914, 1915, 1916, 1917, 1918, 1919, 1920, 1921, 1922, 1923, 1924, 1925, 1926, 1927, 1928, 1929, 1930, 1931, 1932, 1933, 1934, 1935, 1936, 1937, 1938, 1939, 1940, 1941, 1942, 1943, 1944, 1945, 1946, 1947, 1948, 1949, 1950, 1951, 1952, 1953, 1954, 1955, 1956, 1957, 1958, 1959, 1960, 1961, 1962, 1963, 1964, 1965, 1966, 1967, 1968, 1969, 1970, 1971, 1972, 1973, 1974, 1975, 1976, 1977, 1978, 1979, 1980, 1981, 1982, 1983, 1984, 1985, 1986, 1987, 1988, 1989, 1990, 1991, 1992, 1993, 1994, 1995, 1996, 1997, 1998, 1999, 2000, 2001, 2002, 2003, 2004, 2005, 2006, 2007, 2008, 2009, 2010, 2011, 2012, 2013, 2014, 2015, 2016, 2017, 2018, 2019, 2020, 2021, 2022, 2023, 2024, 2025, 2026, 2027, 2028, 2029, 2030, 2031, 2032, 2033, 2034, 2035, 2036, 2037, 2038, 2039, 2040, 2041, 2042, 2043, 2044, 2045, 2046, 2047, 2048, 2049, 2050, 2051, 2052, 2053, 2054, 2055, 2056, 2057, 2058, 2059, 2060, 2061, 2062, 2063, 2064, 2065, 2066, 2067, 2068, 2069, 2070, 2071, 2072, 2073, 2074, 2075, 2076, 2077, 2078, 2079, 2080, 2081, 2082, 2083, 2084, 2085, 2086, 2087, 2088, 2089, 2090, 2091, 2092, 2093, 2094, 2095, 2096, 2097, 2098, 2099, 2100, 2101, 2102, 2103, 2104, 2105, 2106, 2107, 2108, 2109, 2110, 2111, 2112, 2113, 2114, 2115, 2116,