

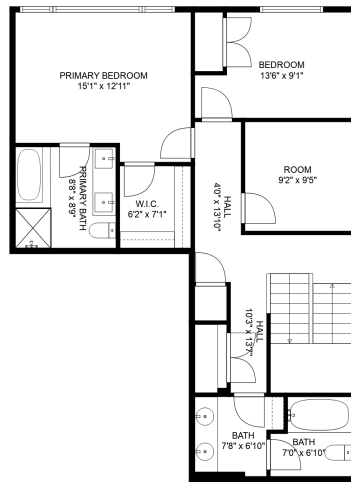


APSOURIS GROUP  
— REAL ESTATE —

# 31-5248 Goldspring Pl

Taylor Apsouris Personal Real Estate Corporation  
604-316-5008

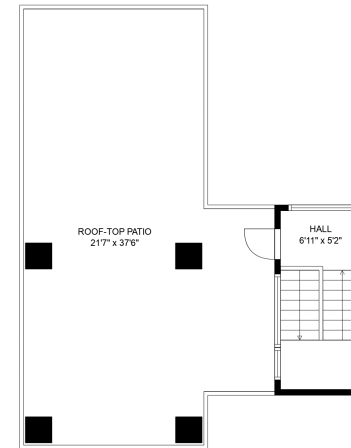
taylor@apsourisgroup.com



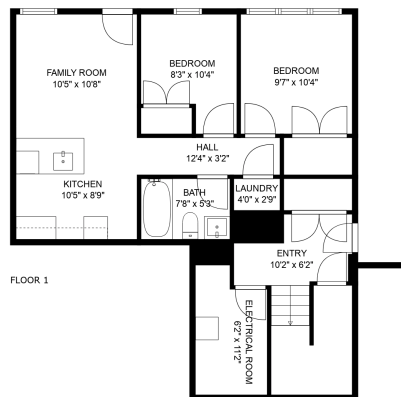
FLOOR 2



FLOOR 3



FLOOR 4



FLOOR 1

## Estimated Areas:

Basement Suite: 748 sq. ft

Main Floor: 992 sq. ft

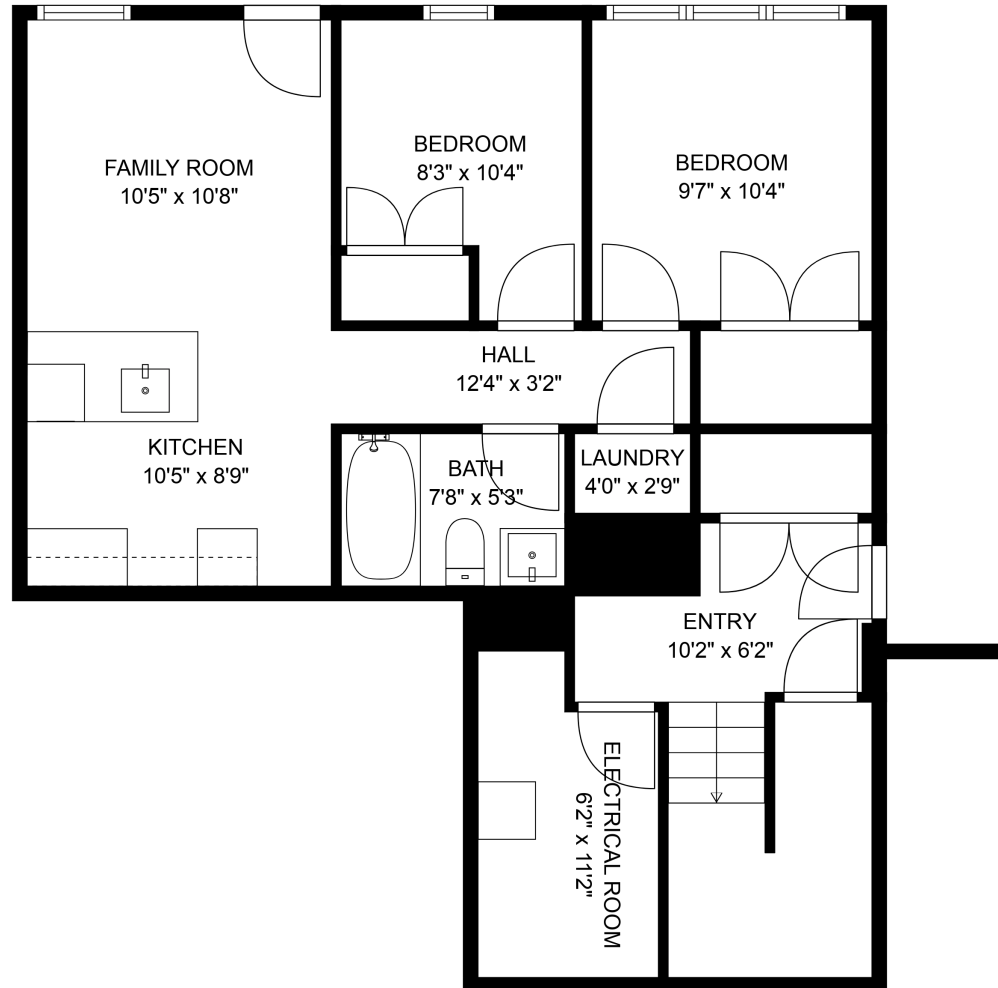
Below Main: 974 sq. ft

**Total: 2714 Sq. Ft**



Measurements and plans provided by:  
**SPOTLIGHT MEDIA**

E&O Insured. For advertising purposes only. Not intended for architectural or construction use. Floorplan and measurements are approximate within +/- 2% tolerance.



## Estimated Areas:

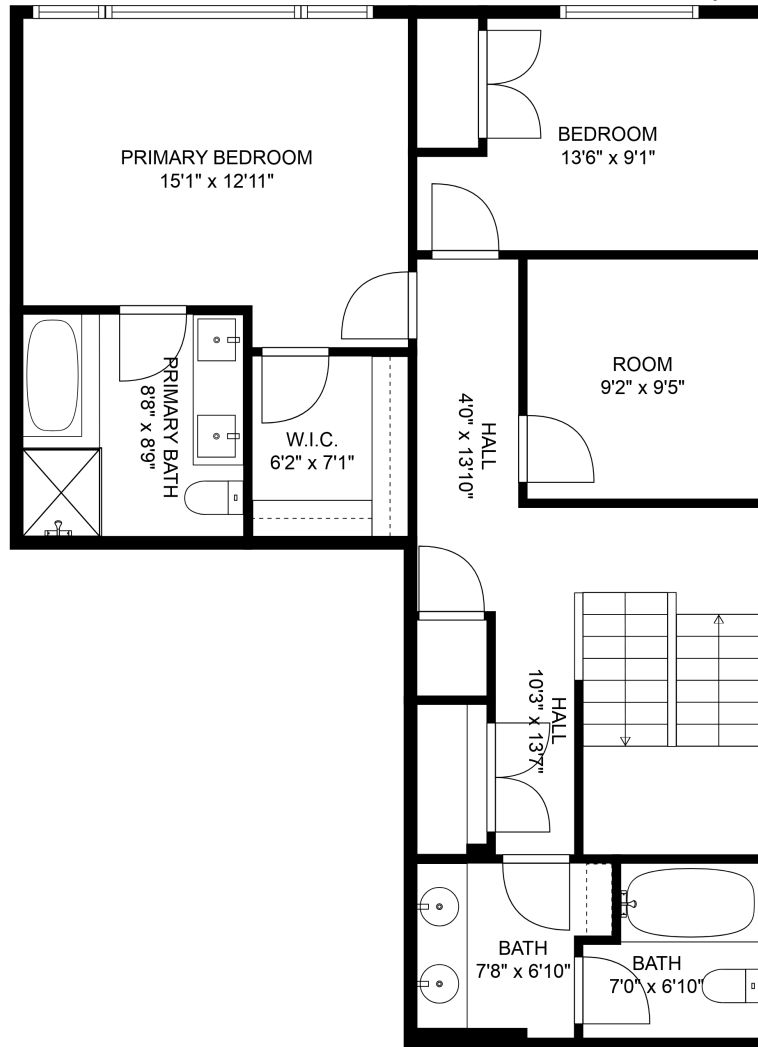
Basement Suite: 748 sq. ft

Main Floor: 992 sq. ft

Below Main: 974 sq. ft

**Total: 2714 Sq. Ft**





## Estimated Areas:

Basement Suite: 748 sq. ft

Main Floor: 992 sq. ft

Below Main: 974 sq. ft

**Total: 2714 Sq. Ft**

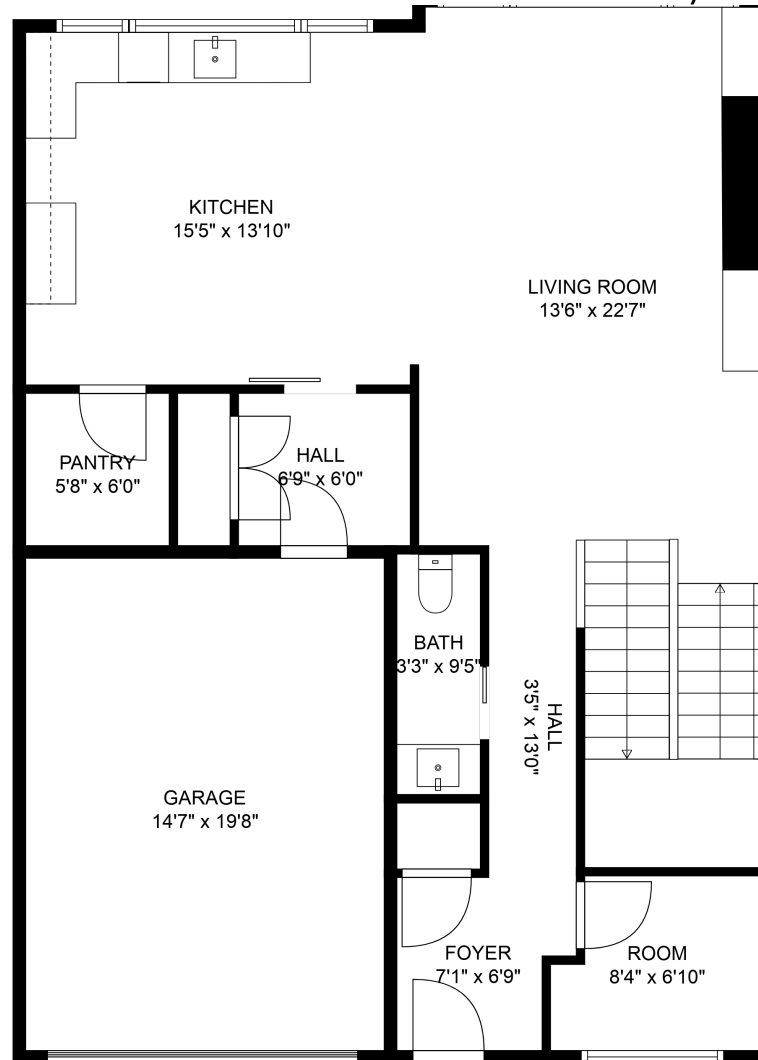


# 31-5248 Goldspring Pl

Taylor Apsouris Personal Real Estate Corporation

604-316-5008

taylor@apsourisgroup.com



## Estimated Areas:

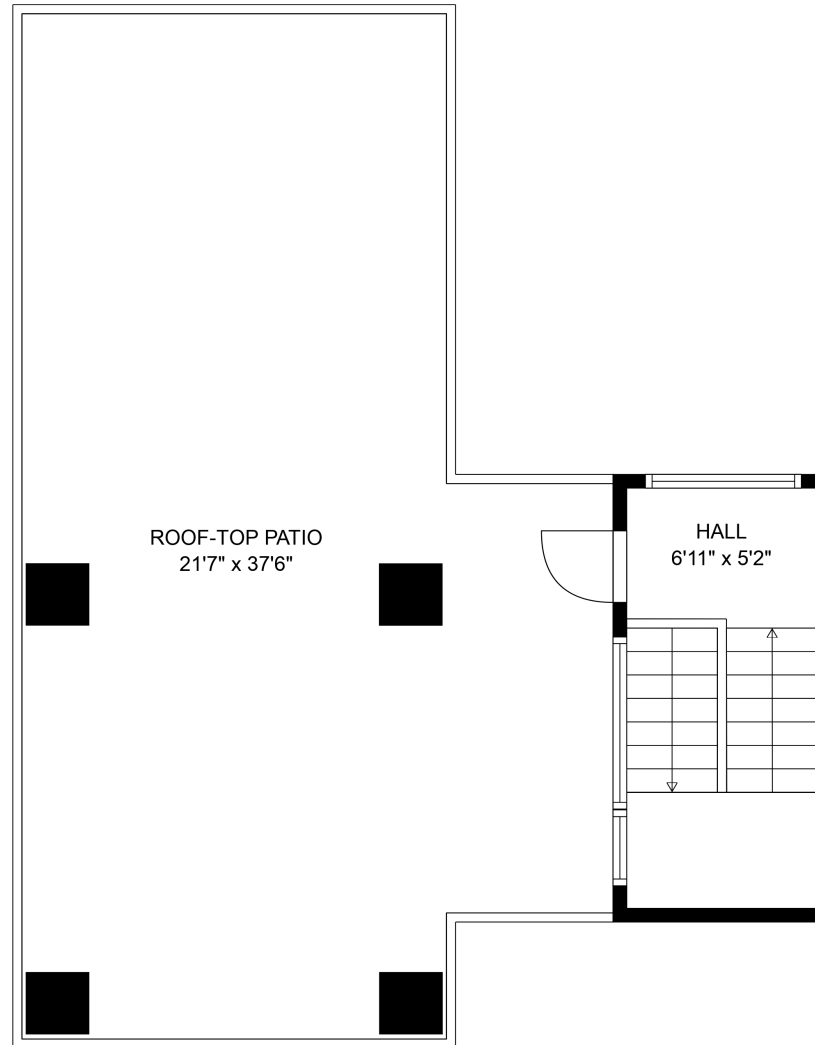
Basement Suite: 748 sq. ft

Main Floor: 992 sq. ft

Below Main: 974 sq. ft

**Total: 2714 Sq. Ft**





## Estimated Areas:

Basement Suite: 748 sq. ft

Main Floor: 992 sq. ft

Below Main: 974 sq. ft

**Total: 2714 Sq. Ft**

