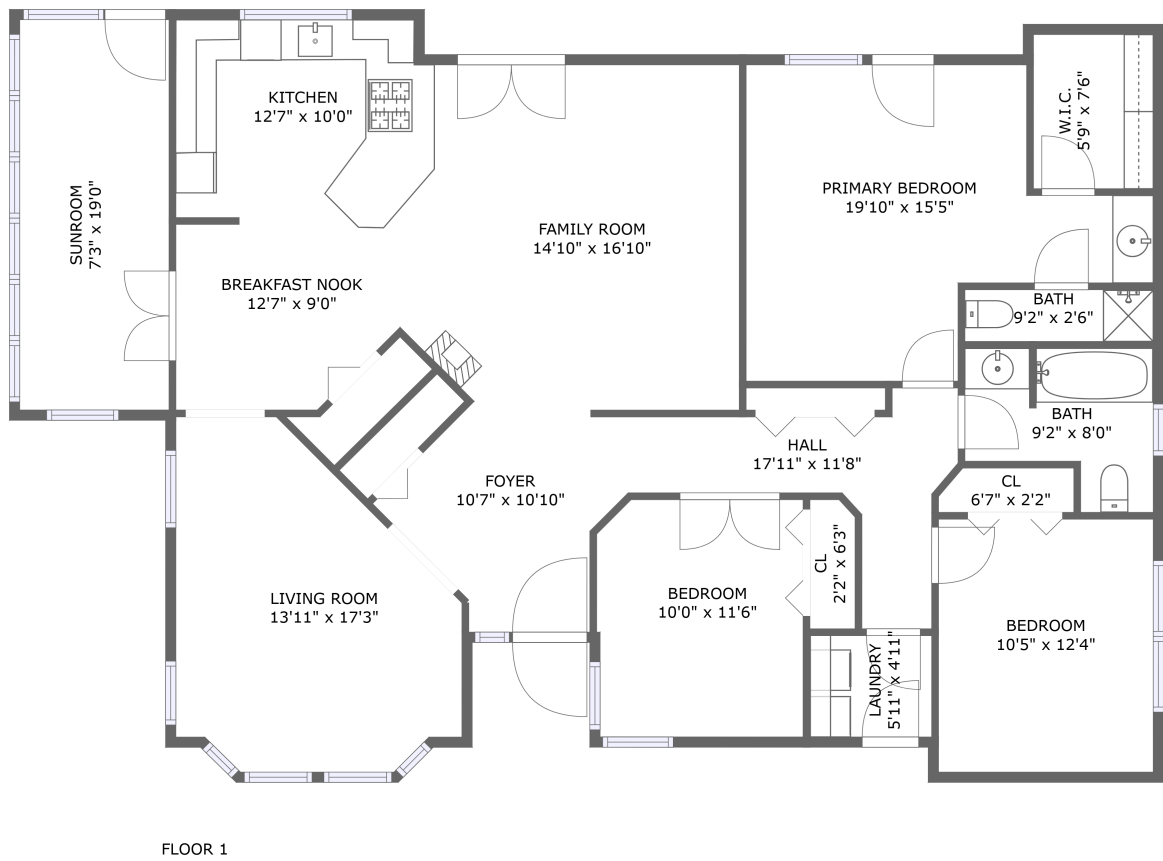




Home report


1325 Roseway Court Southeast, Salem, Oregon 97302, United States





Property summary


 **0** Garages


 **3** Bedrooms

 **1** Bathrooms

 **1** Half baths

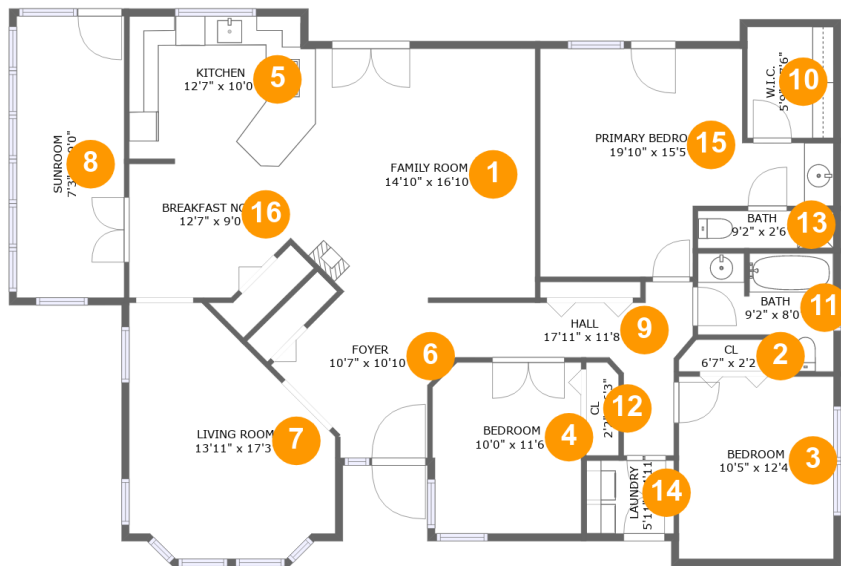
 **1** Floors

 **1,839** Gross living area sqft

 **1,839** Total sqft

Home report

1325 Roseway Court Southeast, Salem, Oregon 97302, United States



Room dimensions

Floor 1

Total sqft: 1839

Living area: 1839

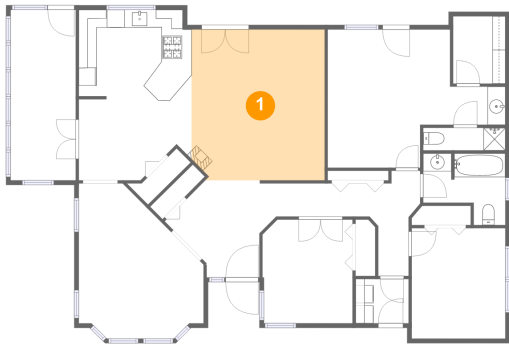
#		Dimensions	sqft	Counted as living area
1	Family Room	14'10" x 16'10"	247 sq. ft	Yes
2	Cl	6'7" x 2'2"	13 sq. ft	Yes
3	Bedroom	10'5" x 12'4"	129 sq. ft	Yes
4	Bedroom	10'0" x 11'6"	114 sq. ft	Yes
5	Kitchen	12'7" x 10'0"	123 sq. ft	Yes
6	Foyer	10'7" x 10'10"	86 sq. ft	Yes
7	Living Room	13'11" x 17'3"	192 sq. ft	Yes
8	Sunroom	7'3" x 19'0"	138 sq. ft	Yes
9	Hall	17'11" x 11'8"	95 sq. ft	Yes
10	W.I.C.	5'9" x 7'6"	44 sq. ft	Yes
11	Bath	9'2" x 8'0"	58 sq. ft	Yes

Home report

1325 Roseway Court Southeast, Salem, Oregon 97302, United States

#		Dimensions	sqft	Counted as living area
12	Cl	2'2" x 6'3"	14 sq. ft	Yes
13	Bath	9'2" x 2'6"	23 sq. ft	Yes
14	Laundry	5'11" x 4'11"	29 sq. ft	Yes
15	Primary Bedroom	19'10" x 15'5"	221 sq. ft	Yes
16	Breakfast Nook	12'7" x 9'0"	101 sq. ft	Yes

1 Floor 1 - Family Room



Dimensions: 14'10" x 16'10"
Area: 247 sq. ft
Counted as living area: Yes

Heated: Yes
Finished: Yes
Enclosed: Yes
Contiguous: Yes
Permitted: Yes
Wet space: No
Addition: No
Conversion: No

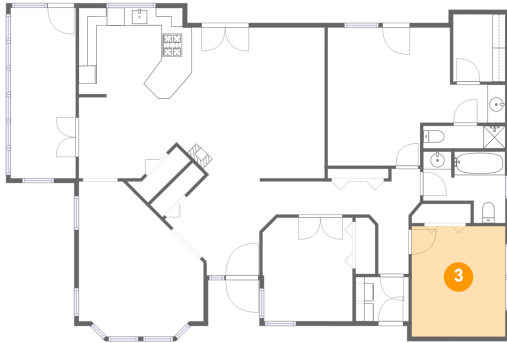
2 Floor 1 - Cl



Dimensions: 6'7" x 2'2"
Area: 13 sq. ft
Counted as living area: Yes

Heated: Yes
Finished: Yes
Enclosed: Yes
Contiguous: Yes
Permitted: Yes
Wet space: No
Addition: No
Conversion: No

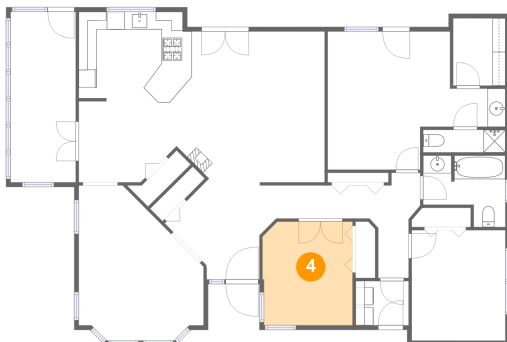
3 Floor 1 - Bedroom



Dimensions: 10'5" x 12'4"
Area: 129 sq. ft
Counted as living area: Yes

Heated: Yes
Finished: Yes
Enclosed: Yes
Contiguous: Yes
Permitted: Yes
Wet space: No
Addition: No
Conversion: No

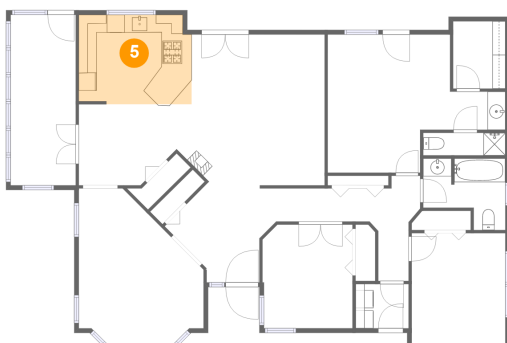
4 Floor 1 - Bedroom



Dimensions: 10'0" x 11'6"
Area: 114 sq. ft
Counted as living area: Yes

Heated: Yes
Finished: Yes
Enclosed: Yes
Contiguous: Yes
Permitted: Yes
Wet space: No
Addition: No
Conversion: No

5 Floor 1 - Kitchen

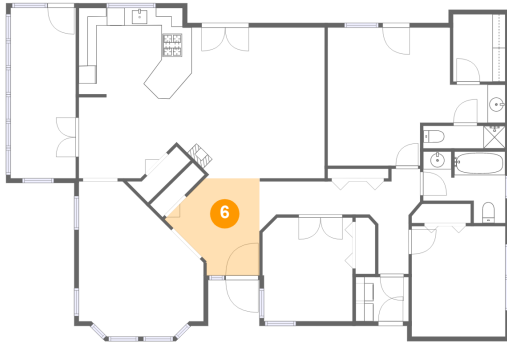


Dimensions: 12'7" x 10'0"
Area: 123 sq. ft
Counted as living area: Yes

Heated: Yes
Finished: Yes
Enclosed: Yes
Contiguous: Yes
Permitted: Yes
Wet space: No
Addition: No
Conversion: No

1325 Roseway Court Southeast, Salem, Oregon 97302, United States

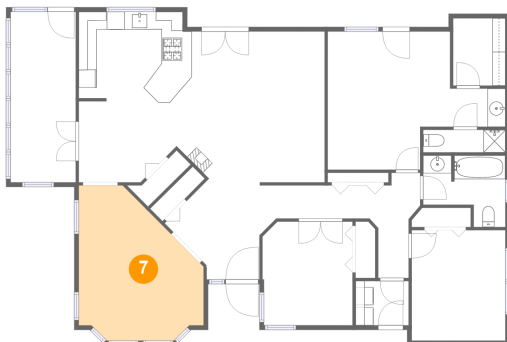
6 Floor 1 - Foyer



Dimensions: 10'7" x 10'10"
Area: 86 sq. ft
Counted as living area: Yes

Heated: Yes
Finished: Yes
Enclosed: Yes
Contiguous: Yes
Permitted: Yes
Wet space: No
Addition: No
Conversion: No

7 Floor 1 - Living Room



Dimensions: 13'11" x 17'3"
Area: 192 sq. ft
Counted as living area: Yes

Heated: Yes
Finished: Yes
Enclosed: Yes
Contiguous: Yes
Permitted: Yes
Wet space: No
Addition: No
Conversion: No

8 Floor 1 - Sunroom

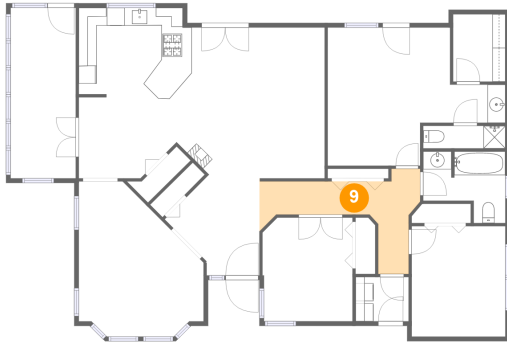


Dimensions: 7'3" x 19'0"
Area: 138 sq. ft
Counted as living area: Yes

Heated: Yes
Finished: Yes
Enclosed: Yes
Contiguous: Yes
Permitted: Yes
Wet space: No
Addition: No
Conversion: No

1325 Roseway Court Southeast, Salem, Oregon 97302, United States

9 Floor 1 - Hall



Dimensions: 17'11" x 11'8"
Area: 95 sq. ft
Counted as living area: Yes

Heated: Yes
Finished: Yes
Enclosed: Yes
Contiguous: Yes
Permitted: Yes
Wet space: No
Addition: No
Conversion: No

10 Floor 1 - W.I.C.



Dimensions: 5'9" x 7'6"
Area: 44 sq. ft
Counted as living area: Yes

Heated: Yes
Finished: Yes
Enclosed: Yes
Contiguous: Yes
Permitted: Yes
Wet space: No
Addition: No
Conversion: No

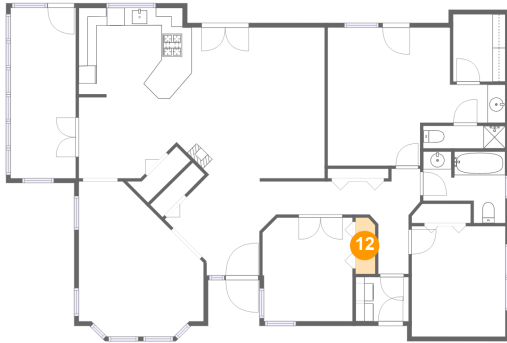
11 Floor 1 - Bath



Dimensions: 9'2" x 8'0"
Area: 58 sq. ft
Counted as living area: Yes

Heated: Yes
Finished: Yes
Enclosed: Yes
Contiguous: Yes
Permitted: Yes
Wet space: Yes
Addition: No
Conversion: No

12 Floor 1 - Cl



Dimensions: 2'2" x 6'3"
Area: 14 sq. ft
Counted as living area: Yes

Heated: Yes
Finished: Yes
Enclosed: Yes
Contiguous: Yes
Permitted: Yes
Wet space: No
Addition: No
Conversion: No

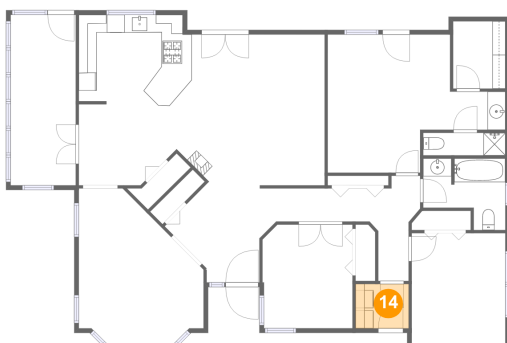
13 Floor 1 - Bath



Dimensions: 9'2" x 2'6"
Area: 23 sq. ft
Counted as living area: Yes

Heated: Yes
Finished: Yes
Enclosed: Yes
Contiguous: Yes
Permitted: Yes
Wet space: Yes
Addition: No
Conversion: No

14 Floor 1 - Laundry



Dimensions: 5'11" x 4'11"
Area: 29 sq. ft
Counted as living area: Yes

Heated: Yes
Finished: Yes
Enclosed: Yes
Contiguous: Yes
Permitted: Yes
Wet space: No
Addition: No
Conversion: No

1325 Roseway Court Southeast, Salem, Oregon 97302, United States

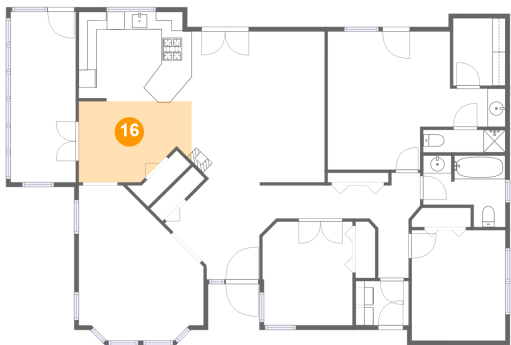
15 Floor 1 - Primary Bedroom



Dimensions: 19'10" x 15'5"
Area: 221 sq. ft
Counted as living area: Yes

Heated: Yes
Finished: Yes
Enclosed: Yes
Contiguous: Yes
Permitted: Yes
Wet space: No
Addition: No
Conversion: No

16 Floor 1 - Breakfast Nook



Dimensions: 12'7" x 9'0"
Area: 101 sq. ft
Counted as living area: Yes

Heated: Yes
Finished: Yes
Enclosed: Yes
Contiguous: Yes
Permitted: Yes
Wet space: No
Addition: No
Conversion: No