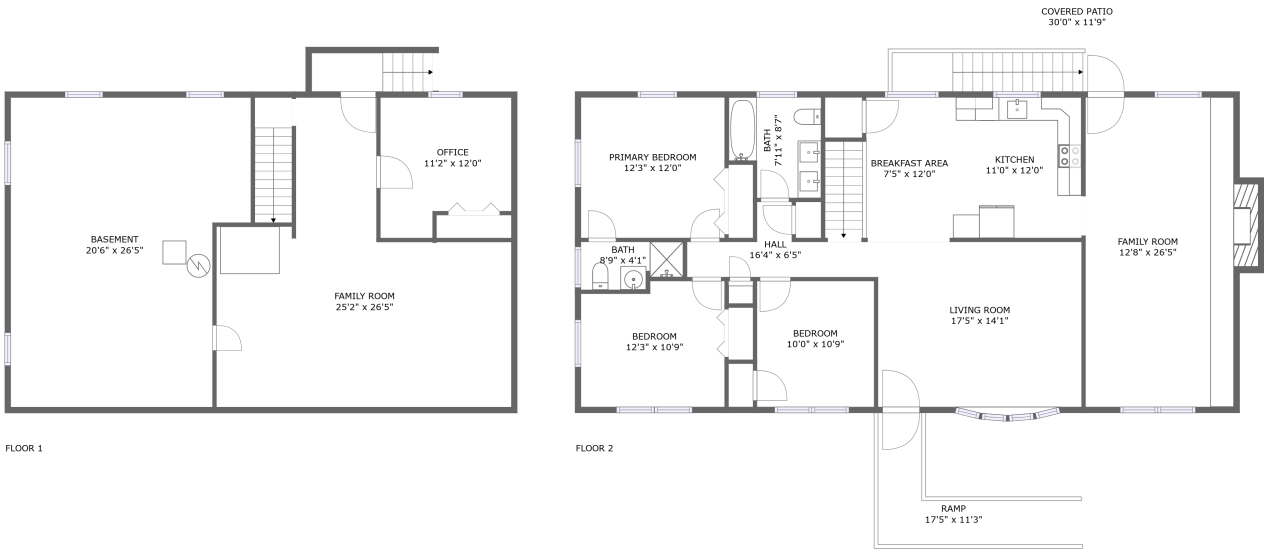


3710 Bandy Road, Roanoke, Virginia, United States



Property summary



0
Garages



3
Bedrooms



2
Bathrooms



0
Half baths



2
Floors

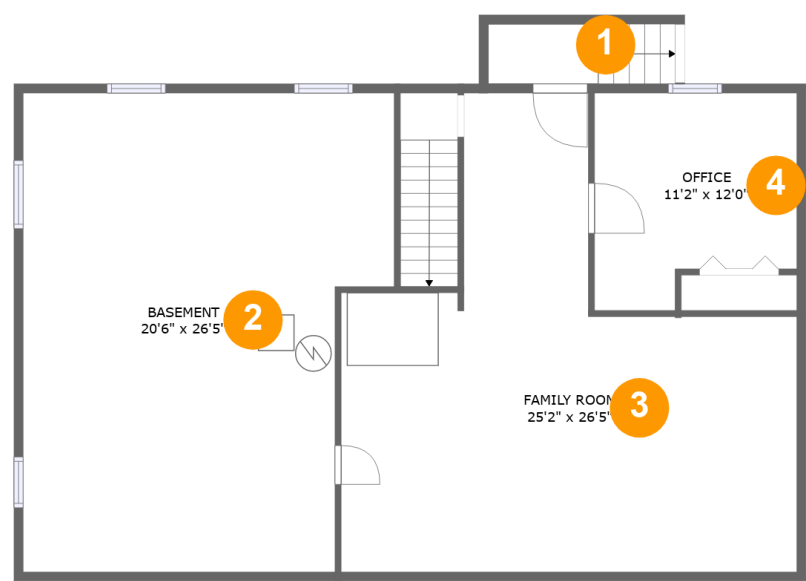


2,242
Gross living
area sqft



3,230
Total sqft

3710 Bandy Road,Roanoke,Virginia,United States

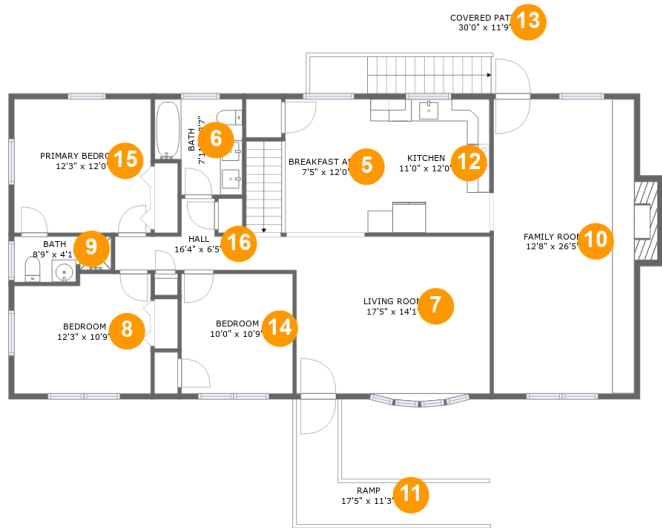


Room dimensions

Floor 1

Total sqft: 1204 Living area: 681

#		Dimensions	sqft	Counted as living area
1	Outdoor	6'1" x 3'4"	34 sq. ft	No
2	Basement	20'6" x 26'5"	491 sq. ft	No
3	Family Room	25'2" x 26'5"	449 sq. ft	Yes
4	Office	11'2" x 12'0"	119 sq. ft	Yes



Room dimensions

Floor 2

Total sqft: 2026 Living area: 1561

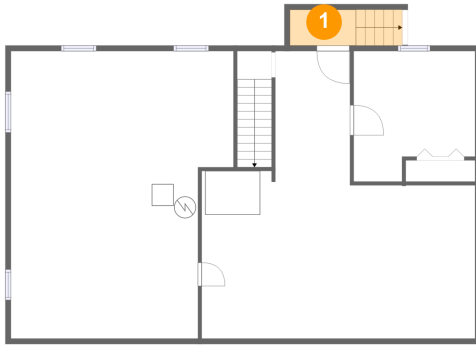
#		Dimensions	sqft	Counted as living area
5	Breakfast Area	7'5" x 12'0"	118 sq. ft	Yes
6	Bath	7'11" x 8'7"	60 sq. ft	Yes
7	Living Room	17'5" x 14'1"	249 sq. ft	Yes
8	Bedroom	12'3" x 10'9"	126 sq. ft	Yes
9	Bath	8'9" x 4'1"	32 sq. ft	Yes
10	Family Room	12'8" x 26'5"	350 sq. ft	Yes
11	Ramp	17'5" x 11'3"	93 sq. ft	No
12	Kitchen	11'0" x 12'0"	132 sq. ft	Yes
13	Covered Patio	30'0" x 11'9"	355 sq. ft	No
14	Bedroom	10'0" x 10'9"	108 sq. ft	Yes
15	Primary Bedroom	12'3" x 12'0"	147 sq. ft	Yes

3710 Bandy Road,Roanoke,Virginia,United States

#		Dimensions	sqft	Counted as living area
16	Hall	16'4" x 6'5"	59 sq. ft	Yes

3710 Bandy Road,Roanoke,Virginia,United States

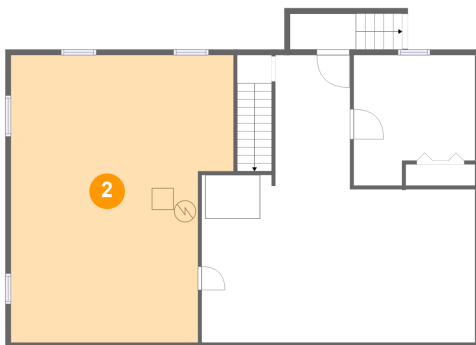
1 Floor 1 - Outdoor



Dimensions: 6'1" x 3'4"
Area: 34 sq. ft
Counted as living area: No

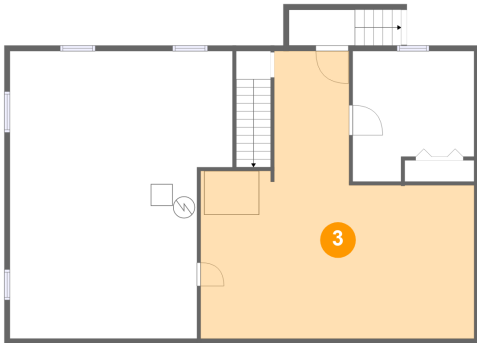
Heated: No
Finished: No
Enclosed: No
Contiguous: Yes
Permitted: No
Wet space: No
Addition: No
Conversion: No

2 Floor 1 - Basement



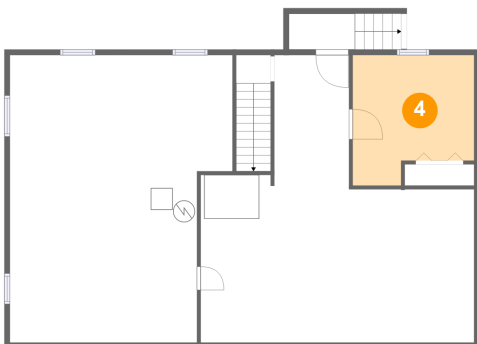
Dimensions: 20'6" x 26'5"
Area: 491 sq. ft
Counted as living area: No

Heated: Yes
Finished: No
Enclosed: Yes
Contiguous: Yes
Permitted: Yes
Wet space: No
Addition: No
Conversion: No

3710 Bandy Road, Roanoke, Virginia, United States**3 Floor 1 - Family Room**

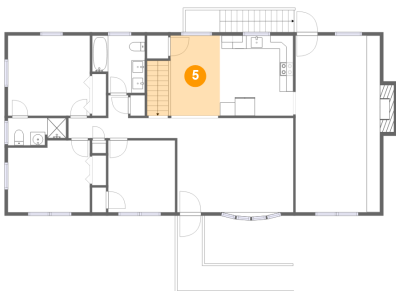
Dimensions: 25'2" x 26'5"
Area: 449 sq. ft
Counted as living area: Yes

Heated: Yes
Finished: Yes
Enclosed: Yes
Contiguous: Yes
Permitted: Yes
Wet space: No
Addition: No
Conversion: No

4 Floor 1 - Office

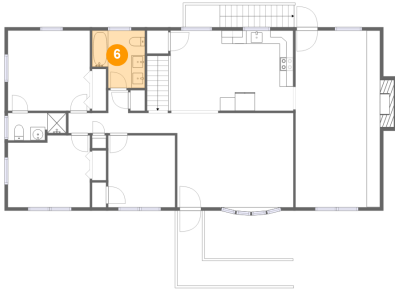
Dimensions: 11'2" x 12'0"
Area: 119 sq. ft
Counted as living area: Yes

Heated: Yes
Finished: Yes
Enclosed: Yes
Contiguous: Yes
Permitted: Yes
Wet space: No
Addition: No
Conversion: No

5 Floor 2 - Breakfast Area

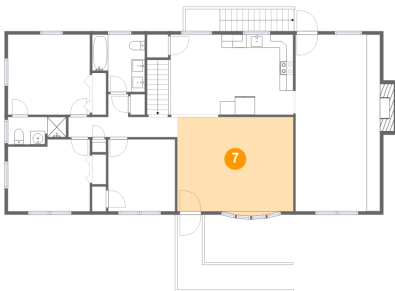
Dimensions: 7'5" x 12'0"
Area: 118 sq. ft
Counted as living area: Yes

Heated: Yes
Finished: Yes
Enclosed: Yes
Contiguous: Yes
Permitted: Yes
Wet space: No
Addition: No
Conversion: No

3710 Bandy Road, Roanoke, Virginia, United States**6 Floor 2 - Bath**

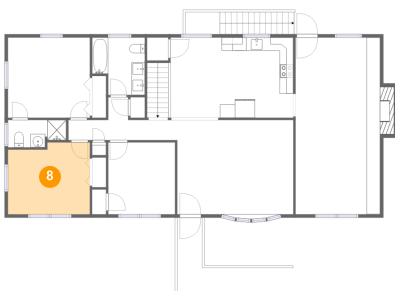
Dimensions: 7'11" x 8'7"
Area: 60 sq. ft
Counted as living area: Yes

Heated: Yes
Finished: Yes
Enclosed: Yes
Contiguous: Yes
Permitted: Yes
Wet space: Yes
Addition: No
Conversion: No

7 Floor 2 - Living Room

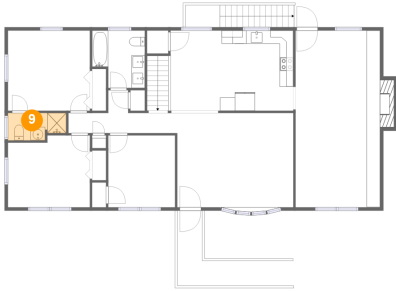
Dimensions: 17'5" x 14'1"
Area: 249 sq. ft
Counted as living area: Yes

Heated: Yes
Finished: Yes
Enclosed: Yes
Contiguous: Yes
Permitted: Yes
Wet space: No
Addition: No
Conversion: No

8 Floor 2 - Bedroom

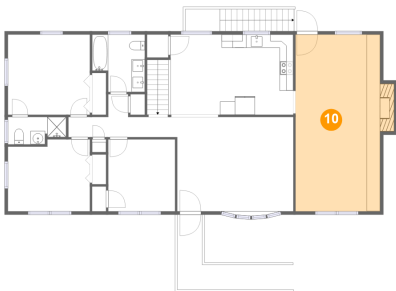
Dimensions: 12'3" x 10'9"
Area: 126 sq. ft
Counted as living area: Yes

Heated: Yes
Finished: Yes
Enclosed: Yes
Contiguous: Yes
Permitted: Yes
Wet space: No
Addition: No
Conversion: No

3710 Bandy Road, Roanoke, Virginia, United States**9 Floor 2 - Bath**

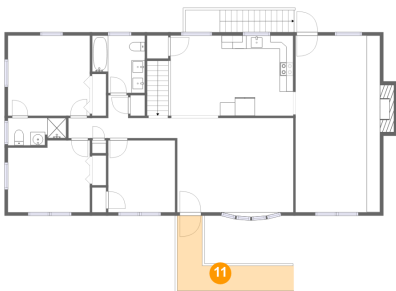
Dimensions: 8'9" x 4'1"
Area: 32 sq. ft
Counted as living area: Yes

Heated: Yes
Finished: Yes
Enclosed: Yes
Contiguous: Yes
Permitted: Yes
Wet space: Yes
Addition: No
Conversion: No

10 Floor 2 - Family Room

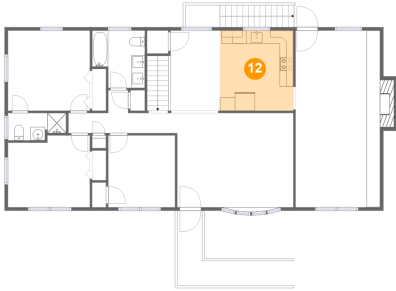
Dimensions: 12'8" x 26'5"
Area: 350 sq. ft
Counted as living area: Yes

Heated: Yes
Finished: Yes
Enclosed: Yes
Contiguous: Yes
Permitted: Yes
Wet space: No
Addition: No
Conversion: No

11 Floor 2 - Ramp

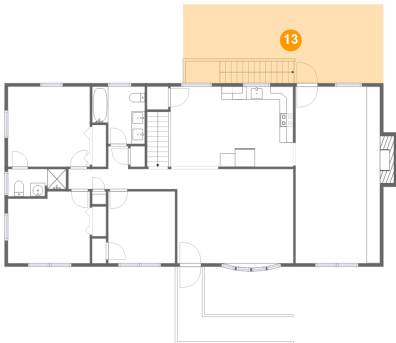
Dimensions: 17'5" x 11'3"
Area: 93 sq. ft
Counted as living area: No

Heated: No
Finished: Yes
Enclosed: No
Contiguous: Yes
Permitted: Yes
Wet space: No
Addition: No
Conversion: No

3710 Bandy Road, Roanoke, Virginia, United States**12 Floor 2 - Kitchen**

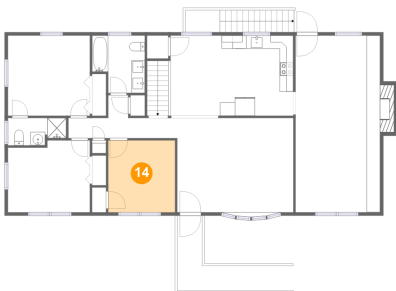
Dimensions: 11'0" x 12'0"
Area: 132 sq. ft
Counted as living area: Yes

Heated: Yes
Finished: Yes
Enclosed: Yes
Contiguous: Yes
Permitted: Yes
Wet space: No
Addition: No
Conversion: No

13 Floor 2 - Covered Patio

Dimensions: 30'0" x 11'9"
Area: 355 sq. ft
Counted as living area: No

Heated: No
Finished: Yes
Enclosed: No
Contiguous: No
Permitted: Yes
Wet space: No
Addition: No
Conversion: No

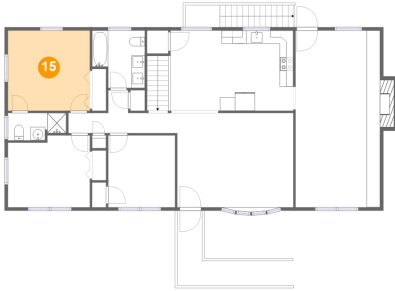
14 Floor 2 - Bedroom

Dimensions: 10'0" x 10'9"
Area: 108 sq. ft
Counted as living area: Yes

Heated: Yes
Finished: Yes
Enclosed: Yes
Contiguous: Yes
Permitted: Yes
Wet space: No
Addition: No
Conversion: No

3710 Bandy Road,Roanoke,Virginia,United States

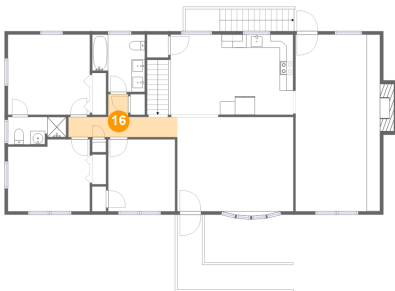
15 Floor 2 - Primary Bedroom



Dimensions: 12'3" x 12'0"
Area: 147 sq. ft
Counted as living area: Yes

Heated: Yes
Finished: Yes
Enclosed: Yes
Contiguous: Yes
Permitted: Yes
Wet space: No
Addition: No
Conversion: No

16 Floor 2 - Hall



Dimensions: 16'4" x 6'5"
Area: 59 sq. ft
Counted as living area: Yes

Heated: Yes
Finished: Yes
Enclosed: Yes
Contiguous: Yes
Permitted: Yes
Wet space: No
Addition: No
Conversion: No