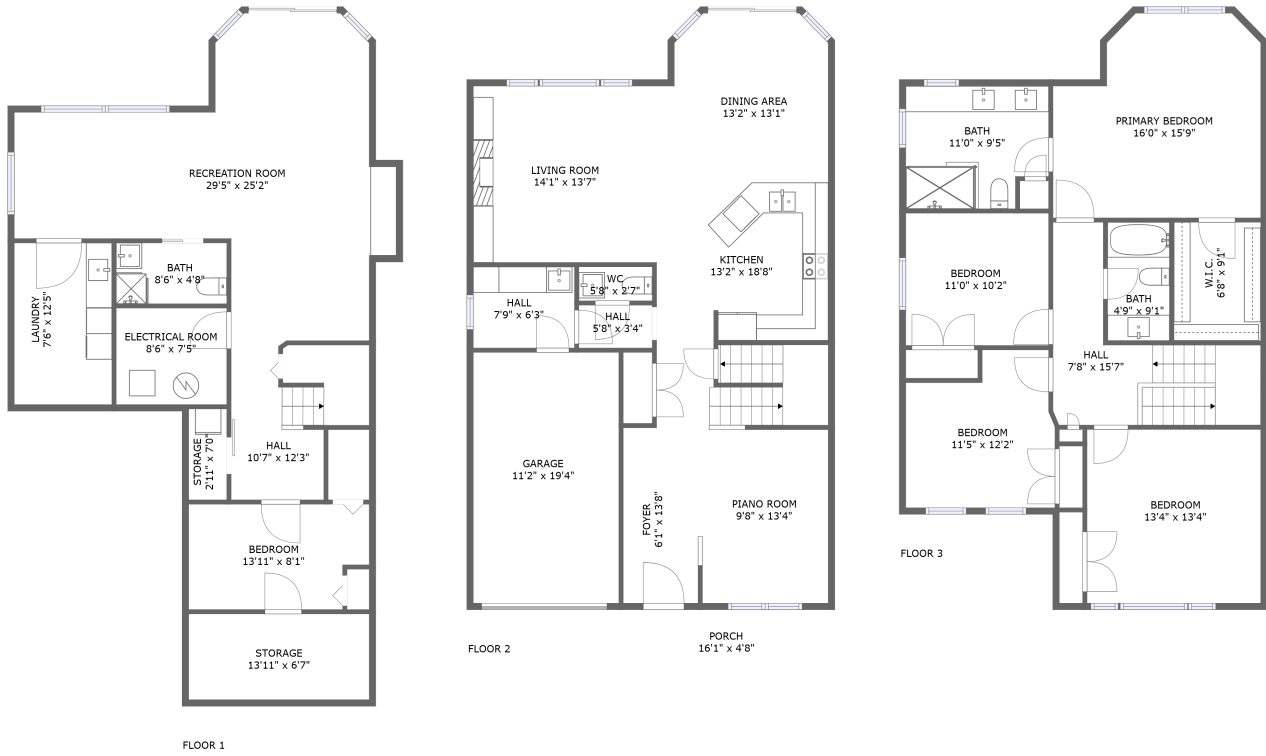



73 Woodbury Crescent, Newmarket, ON, CA



Property summary

 **1** Garages

 **5** Bedrooms

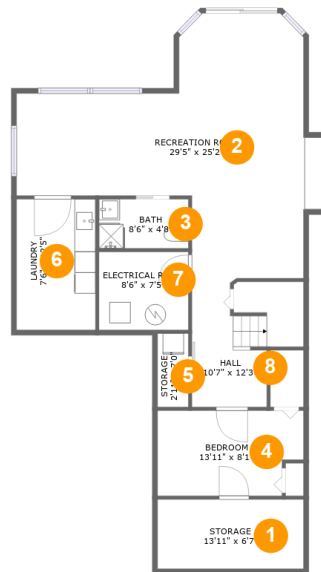
 **3** Bathrooms

 **1** Half baths

 **3** Floors

 **3,035** Gross living area sqft

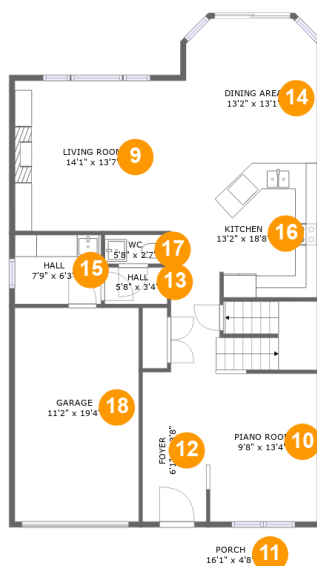
 **3,538** Total sqft

73 Woodbury Crescent, Newmarket, ON, CA**Room dimensions**

Floor 1

Total sqft: 1111 Living area: 914

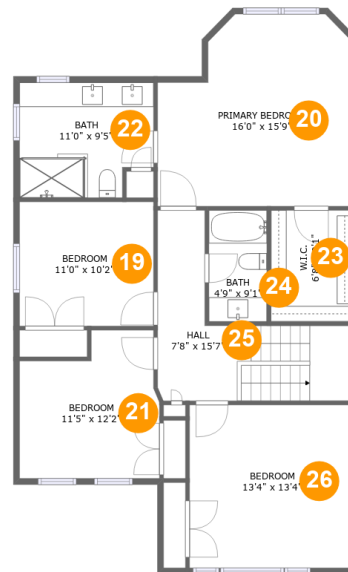
#		Dimensions	sqft	Counted as living area
1	Storage	13'11" x 6'7"	92 sq. ft	No
2	Recreation Room	29'5" x 25'2"	448 sq. ft	Yes
3	Bath	8'6" x 4'8"	40 sq. ft	Yes
4	Bedroom	13'11" x 8'1"	105 sq. ft	Yes
5	Storage	2'11" x 7'0"	21 sq. ft	No
6	Laundry	7'6" x 12'5"	93 sq. ft	Yes
7	Electrical Room	8'6" x 7'5"	63 sq. ft	No
8	Hall	10'7" x 12'3"	105 sq. ft	Yes

73 Woodbury Crescent, Newmarket, ON, CA**Room dimensions**

Floor 2

Total sqft: 1294 Living area: 988

#		Dimensions	sqft	Counted as living area
9	Living Room	14'1" x 13'7"	191 sq. ft	Yes
10	Piano Room	9'8" x 13'4"	130 sq. ft	Yes
11	Porch	16'1" x 4'8"	75 sq. ft	No
12	Foyer	6'1" x 13'8"	82 sq. ft	Yes
13	Hall	5'8" x 3'4"	19 sq. ft	Yes
14	Dining Area	13'2" x 13'1"	160 sq. ft	Yes
15	Hall	7'9" x 6'3"	49 sq. ft	Yes
16	Kitchen	13'2" x 18'8"	240 sq. ft	Yes
17	WC	5'8" x 2'7"	15 sq. ft	Yes
18	Garage	11'2" x 19'4"	216 sq. ft	No

73 Woodbury Crescent, Newmarket, ON, CA**Room dimensions**

Floor 3

Total sqft: 1133 Living area: 1133

#		Dimensions	sqft	Counted as living area
19	Bedroom	11'0" x 10'2"	112 sq. ft	Yes
20	Primary Bedroom	16'0" x 15'9"	223 sq. ft	Yes
21	Bedroom	11'5" x 12'2"	122 sq. ft	Yes
22	Bath	11'0" x 9'5"	97 sq. ft	Yes
23	W.I.C.	6'8" x 9'1"	61 sq. ft	Yes
24	Bath	4'9" x 9'1"	43 sq. ft	Yes
25	Hall	7'8" x 15'7"	135 sq. ft	Yes
26	Bedroom	13'4" x 13'4"	178 sq. ft	Yes

73 Woodbury Crescent, Newmarket, ON, CA

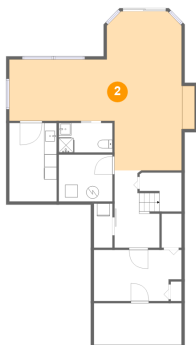
1 Floor 1 - Storage



Dimensions: 13'11" x 6'7"
Area: 92 sq. ft
Counted as living area: No

Heated: No
Finished: No
Enclosed: No
Contiguous: Yes
Permitted: Yes
Wet space: No
Addition: No
Conversion: No

2 Floor 1 - Recreation Room

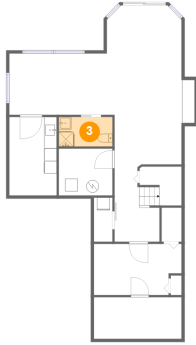


Dimensions: 29'5" x 25'2"
Area: 448 sq. ft
Counted as living area: Yes

Heated: Yes
Finished: Yes
Enclosed: Yes
Contiguous: Yes
Permitted: Yes
Wet space: No
Addition: No
Conversion: No

73 Woodbury Crescent, Newmarket, ON, CA

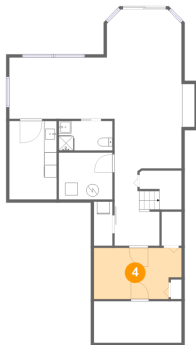
3 Floor 1 - Bath



Dimensions: 8'6" x 4'8"
Area: 40 sq. ft
Counted as living area: Yes

Heated: Yes
Finished: Yes
Enclosed: Yes
Contiguous: Yes
Permitted: Yes
Wet space: Yes
Addition: No
Conversion: No

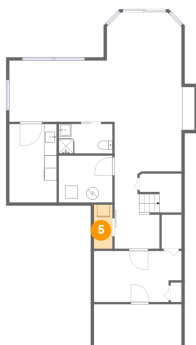
4 Floor 1 - Bedroom



Dimensions: 13'11" x 8'1"
Area: 105 sq. ft
Counted as living area: Yes

Heated: Yes
Finished: Yes
Enclosed: Yes
Contiguous: Yes
Permitted: Yes
Wet space: No
Addition: No
Conversion: No

5 Floor 1 - Storage

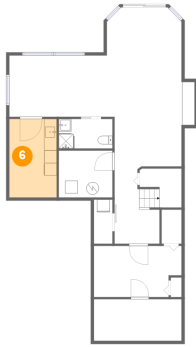


Dimensions: 2'11" x 7'0"
Area: 21 sq. ft
Counted as living area: No

Heated: No
Finished: Yes
Enclosed: No
Contiguous: Yes
Permitted: Yes
Wet space: No
Addition: No
Conversion: No

73 Woodbury Crescent, Newmarket, ON, CA

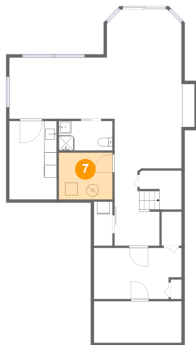
6 Floor 1 - Laundry



Dimensions: 7'6" x 12'5"
Area: 93 sq. ft
Counted as living area: Yes

Heated: Yes
Finished: Yes
Enclosed: Yes
Contiguous: Yes
Permitted: Yes
Wet space: No
Addition: No
Conversion: No

7 Floor 1 - Electrical Room



Dimensions: 8'6" x 7'5"
Area: 63 sq. ft
Counted as living area: No

Heated: No
Finished: No
Enclosed: Yes
Contiguous: Yes
Permitted: Yes
Wet space: No
Addition: No
Conversion: No

8 Floor 1 - Hall

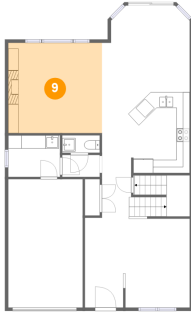


Dimensions: 10'7" x 12'3"
Area: 105 sq. ft
Counted as living area: Yes

Heated: Yes
Finished: Yes
Enclosed: Yes
Contiguous: Yes
Permitted: Yes
Wet space: No
Addition: No
Conversion: No

73 Woodbury Crescent, Newmarket, ON, CA

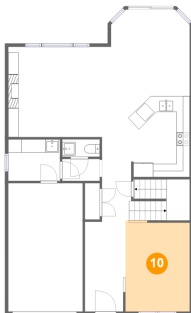
9 Floor 2 - Living Room



Dimensions: 14'1" x 13'7"
Area: 191 sq. ft
Counted as living area: Yes

Heated: Yes
Finished: Yes
Enclosed: Yes
Contiguous: Yes
Permitted: Yes
Wet space: No
Addition: No
Conversion: No

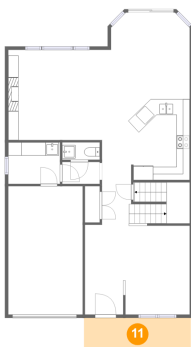
10 Floor 2 - Piano Room



Dimensions: 9'8" x 13'4"
Area: 130 sq. ft
Counted as living area: Yes

Heated: Yes
Finished: Yes
Enclosed: Yes
Contiguous: Yes
Permitted: Yes
Wet space: No
Addition: No
Conversion: No

11 Floor 2 - Porch

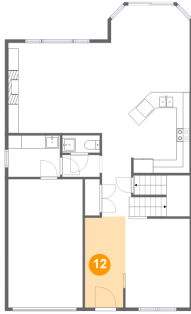


Dimensions: 16'1" x 4'8"
Area: 75 sq. ft
Counted as living area: No

Heated: No
Finished: Yes
Enclosed: No
Contiguous: Yes
Permitted: Yes
Wet space: No
Addition: No
Conversion: No

73 Woodbury Crescent, Newmarket, ON, CA

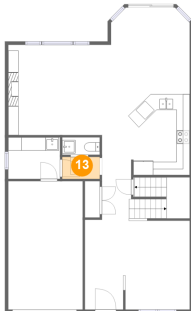
12 Floor 2 - Foyer



Dimensions: 6'1" x 13'8"
Area: 82 sq. ft
Counted as living area: Yes

Heated: Yes
Finished: Yes
Enclosed: Yes
Contiguous: Yes
Permitted: Yes
Wet space: No
Addition: No
Conversion: No

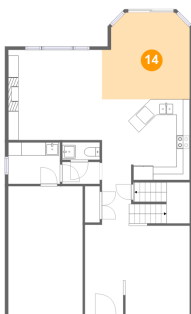
13 Floor 2 - Hall



Dimensions: 5'8" x 3'4"
Area: 19 sq. ft
Counted as living area: Yes

Heated: Yes
Finished: Yes
Enclosed: Yes
Contiguous: Yes
Permitted: Yes
Wet space: No
Addition: No
Conversion: No

14 Floor 2 - Dining Area

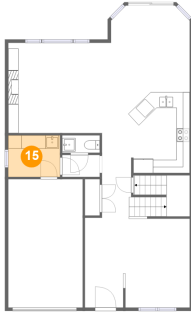


Dimensions: 13'2" x 13'1"
Area: 160 sq. ft
Counted as living area: Yes

Heated: Yes
Finished: Yes
Enclosed: Yes
Contiguous: Yes
Permitted: Yes
Wet space: No
Addition: No
Conversion: No

73 Woodbury Crescent, Newmarket, ON, CA

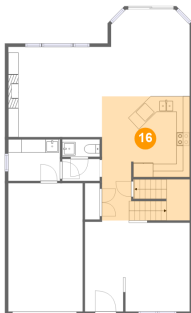
15 Floor 2 - Hall



Dimensions: 7'9" x 6'3"
Area: 49 sq. ft
Counted as living area: Yes

Heated: Yes
Finished: Yes
Enclosed: Yes
Contiguous: Yes
Permitted: Yes
Wet space: No
Addition: No
Conversion: No

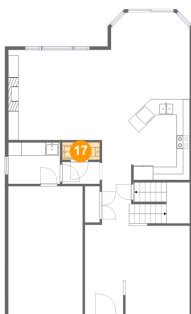
16 Floor 2 - Kitchen



Dimensions: 13'2" x 18'8"
Area: 240 sq. ft
Counted as living area: Yes

Heated: Yes
Finished: Yes
Enclosed: Yes
Contiguous: Yes
Permitted: Yes
Wet space: No
Addition: No
Conversion: No

17 Floor 2 - WC



Dimensions: 5'8" x 2'7"
Area: 15 sq. ft
Counted as living area: Yes

Heated: Yes
Finished: Yes
Enclosed: Yes
Contiguous: Yes
Permitted: Yes
Wet space: Yes
Addition: No
Conversion: No

73 Woodbury Crescent, Newmarket, ON, CA

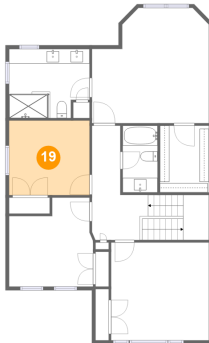
18 Floor 2 - Garage



Dimensions: 11'2" x 19'4"
Area: 216 sq. ft
Counted as living area: No

Heated: No
Finished: No
Enclosed: Yes
Contiguous: Yes
Permitted: Yes
Wet space: No
Addition: No
Conversion: No

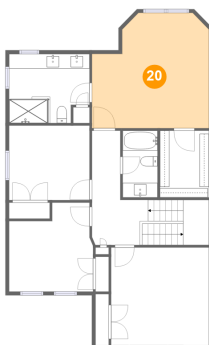
19 Floor 3 - Bedroom



Dimensions: 11'0" x 10'2"
Area: 112 sq. ft
Counted as living area: Yes

Heated: Yes
Finished: Yes
Enclosed: Yes
Contiguous: Yes
Permitted: Yes
Wet space: No
Addition: No
Conversion: No

20 Floor 3 - Primary Bedroom

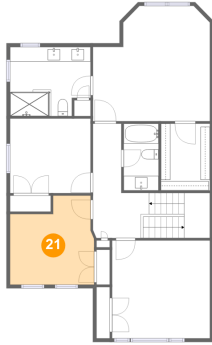


Dimensions: 16'0" x 15'9"
Area: 223 sq. ft
Counted as living area: Yes

Heated: Yes
Finished: Yes
Enclosed: Yes
Contiguous: Yes
Permitted: Yes
Wet space: No
Addition: No
Conversion: No

73 Woodbury Crescent, Newmarket, ON, CA

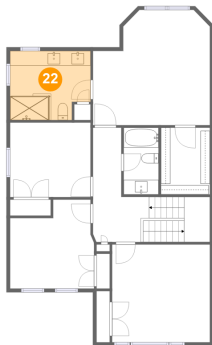
21 Floor 3 - Bedroom



Dimensions: 11'5" x 12'2"
Area: 122 sq. ft
Counted as living area: Yes

Heated: Yes
Finished: Yes
Enclosed: Yes
Contiguous: Yes
Permitted: Yes
Wet space: No
Addition: No
Conversion: No

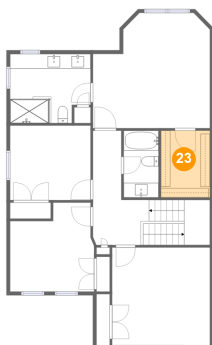
22 Floor 3 - Bath



Dimensions: 11'0" x 9'5"
Area: 97 sq. ft
Counted as living area: Yes

Heated: Yes
Finished: Yes
Enclosed: Yes
Contiguous: Yes
Permitted: Yes
Wet space: Yes
Addition: No
Conversion: No

23 Floor 3 - W.I.C.

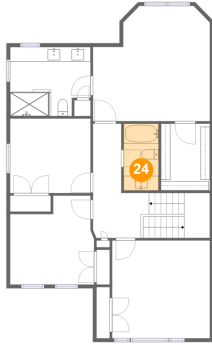


Dimensions: 6'8" x 9'1"
Area: 61 sq. ft
Counted as living area: Yes

Heated: Yes
Finished: Yes
Enclosed: Yes
Contiguous: Yes
Permitted: Yes
Wet space: No
Addition: No
Conversion: No

73 Woodbury Crescent, Newmarket, ON, CA

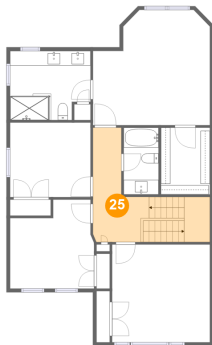
24 Floor 3 - Bath



Dimensions: 4'9" x 9'1"
Area: 43 sq. ft
Counted as living area: Yes

Heated: Yes
Finished: Yes
Enclosed: Yes
Contiguous: Yes
Permitted: Yes
Wet space: Yes
Addition: No
Conversion: No

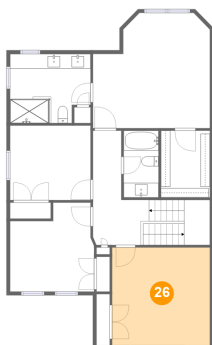
25 Floor 3 - Hall



Dimensions: 7'8" x 15'7"
Area: 135 sq. ft
Counted as living area: Yes

Heated: Yes
Finished: Yes
Enclosed: Yes
Contiguous: Yes
Permitted: Yes
Wet space: No
Addition: No
Conversion: No

26 Floor 3 - Bedroom



Dimensions: 13'4" x 13'4"
Area: 178 sq. ft
Counted as living area: Yes

Heated: Yes
Finished: Yes
Enclosed: Yes
Contiguous: Yes
Permitted: Yes
Wet space: No
Addition: No
Conversion: No