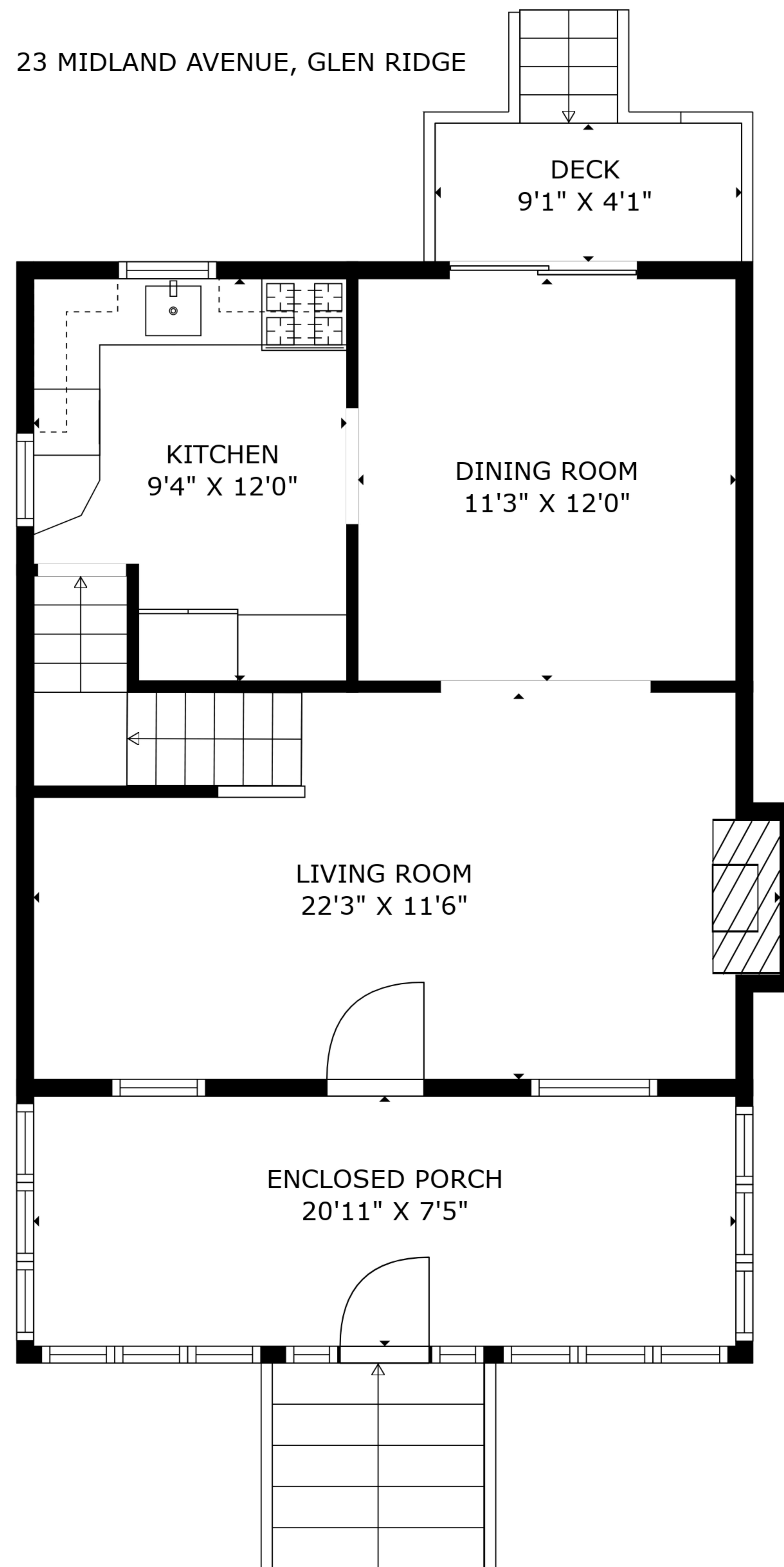


TOTAL: 1653 sq. ft
BELOW GROUND: 498 sq. ft, FIRST FLOOR: 656 sq. ft, SECOND FLOOR: 499 sq. ft
EXCLUDED AREAS: DECK: 47 sq. ft, FIREPLACE: 7 sq. ft

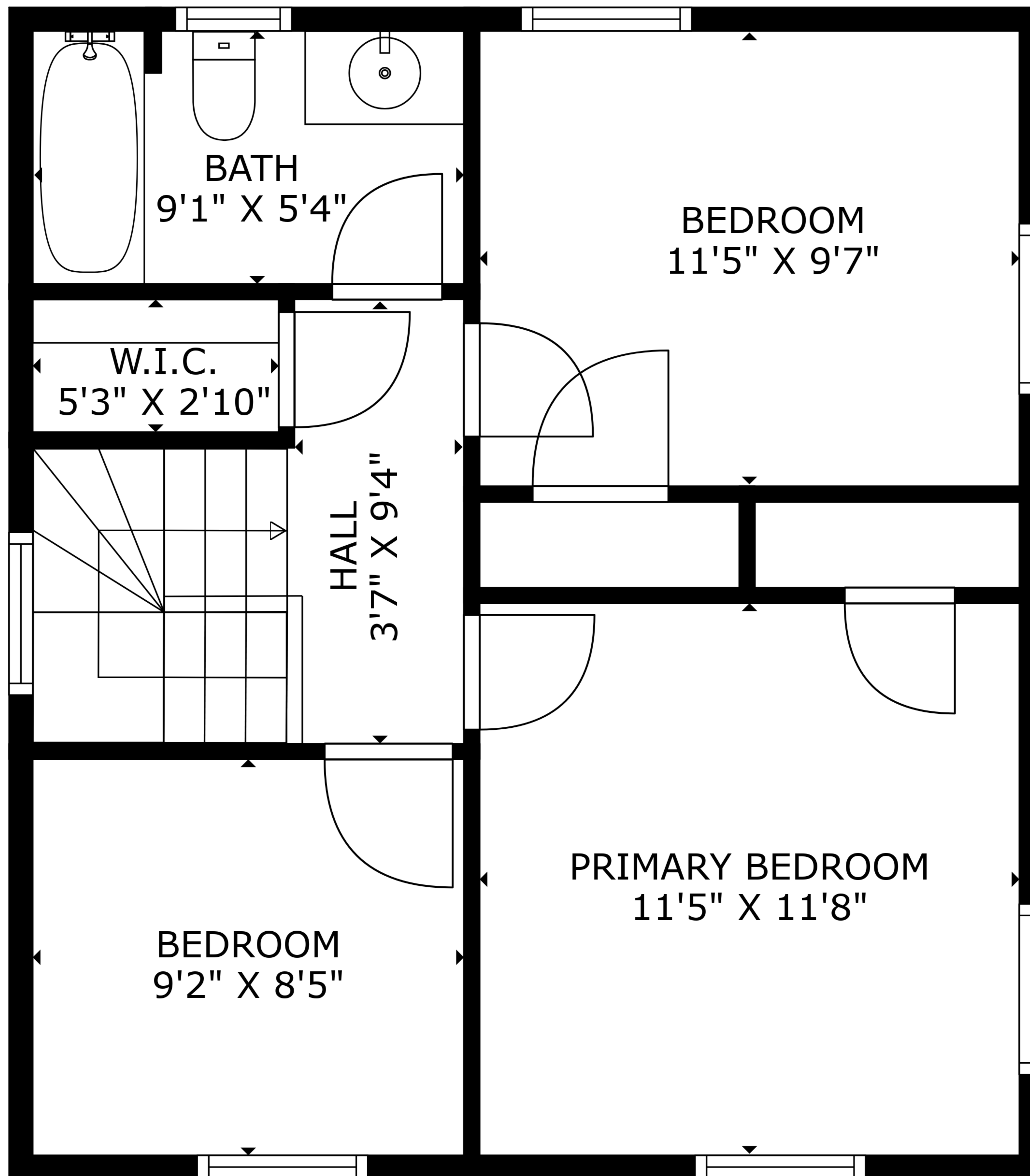
23 MIDLAND AVENUE, GLEN RIDGE



TOTAL: 1653 sq. ft

BELOW GROUND: 498 sq. ft, FIRST FLOOR: 656 sq. ft, SECOND FLOOR: 499 sq. ft
EXCLUDED AREAS: DECK: 47 sq. ft, FIREPLACE: 7 sq. ft

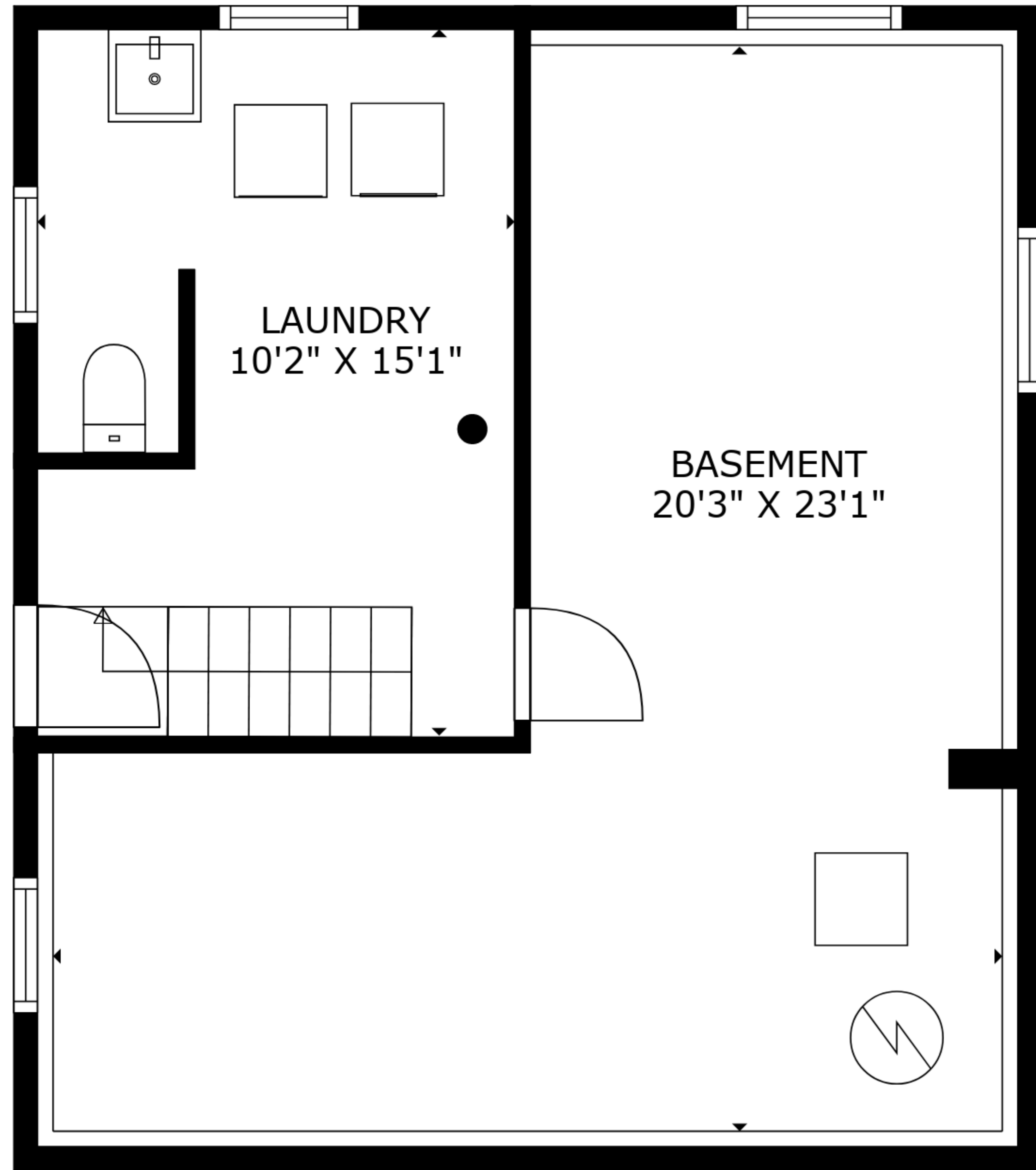
Ihp | Measurements Are Deemed Highly Reliable But Not Guaranteed



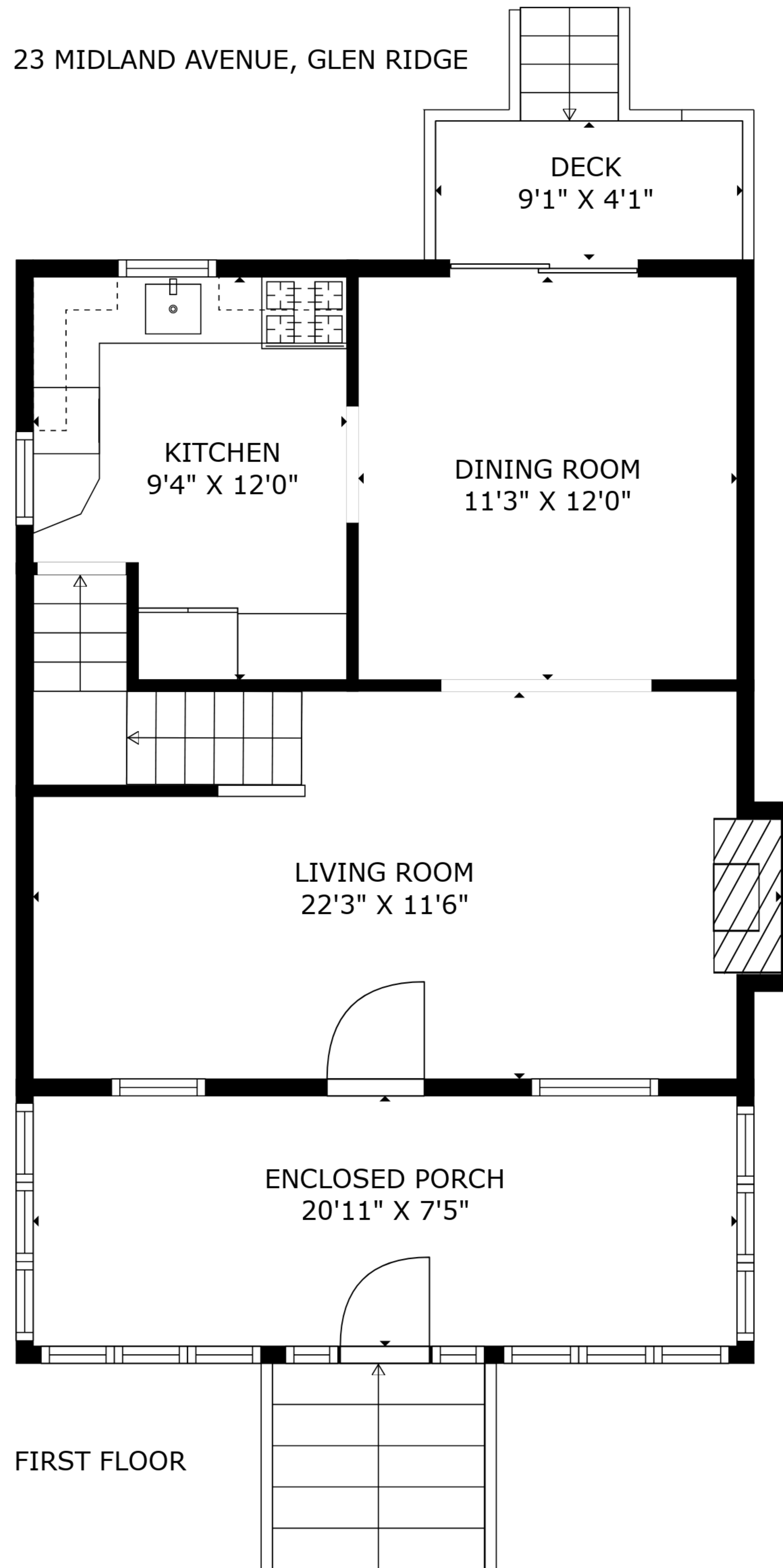
TOTAL: 1653 sq. ft

BELOW GROUND: 498 sq. ft, FIRST FLOOR: 656 sq. ft, SECOND FLOOR: 499 sq. ft
 EXCLUDED AREAS: DECK: 47 sq. ft, FIREPLACE: 7 sq. ft

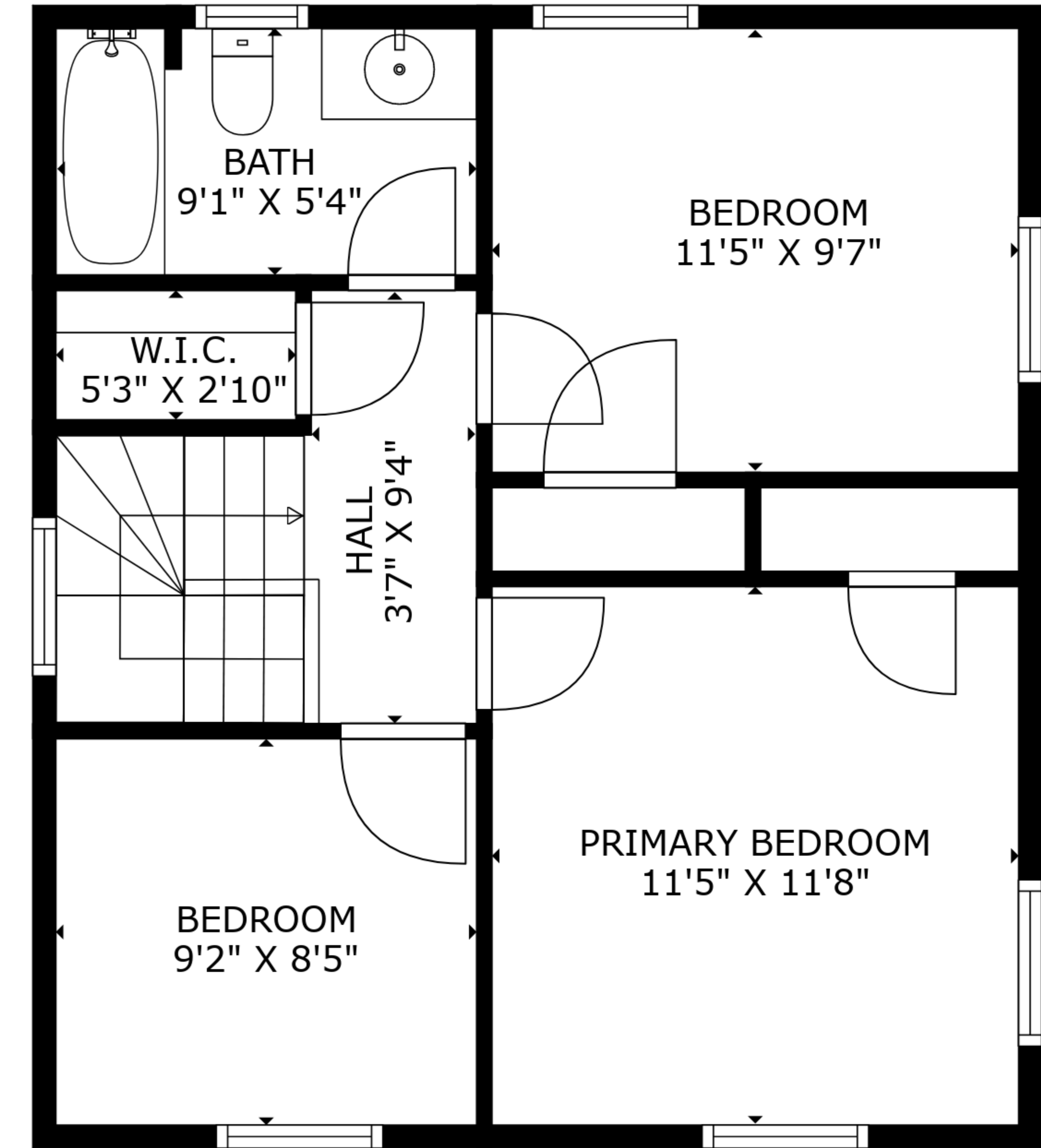
23 MIDLAND AVENUE, GLEN RIDGE



LOWER LEVEL



FIRST FLOOR



SECOND FLOOR

TOTAL: 1653 sq. ft
BELOW GROUND: 498 sq. ft, FIRST FLOOR: 656 sq. ft, SECOND FLOOR: 499 sq. ft
EXCLUDED AREAS: DECK: 47 sq. ft, FIREPLACE: 7 sq. ft