

1737 Brynwood Ave, Chubbuck, Bannock County, Idaho, United States, 83202




Property Summary

 **1** garages

 **3** bedrooms

 **3** bathrooms

 **0** half baths

 **4** floors

 **1,855** Gross Living Area sqft

 **2,885** total sqft

1737 Brynwood Ave, Chubbuck, Bannock County, Idaho, United States, 83202



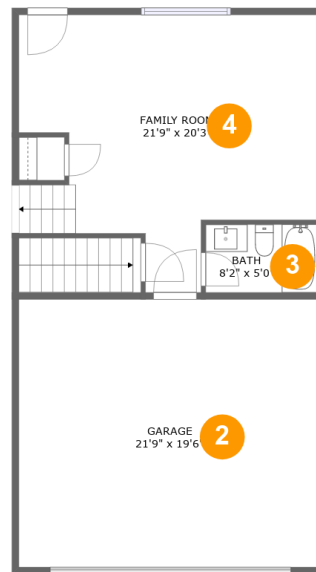
Room Dimensions

Floor 1

Total sqft: 536

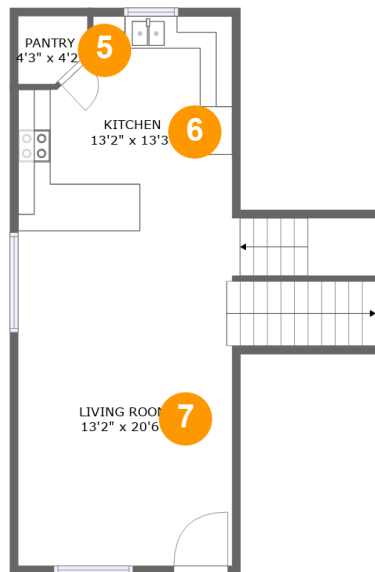
Living area: 0

#	Room name	Dimensions	Area (sqft)	Counted as Living Area
1	Basement	14'6" x 33'8"	479 sq. ft	No

**1737 Brynwood Ave, Chubbuck, Bannock County,
Idaho, United States, 83202****Room Dimensions****Floor 2****Total sqft: 940****Living area: 484**

#	Room name	Dimensions	Area (sqft)	Counted as Living Area
2	Garage	21'9" x 19'6"	425 sq. ft	No
3	Bath	8'2" x 5'0"	40 sq. ft	Yes
4	Family Room	21'9" x 20'3"	342 sq. ft	Yes

**1737 Brynwood Ave, Chubbuck, Bannock County,
Idaho, United States, 83202**



Room Dimensions

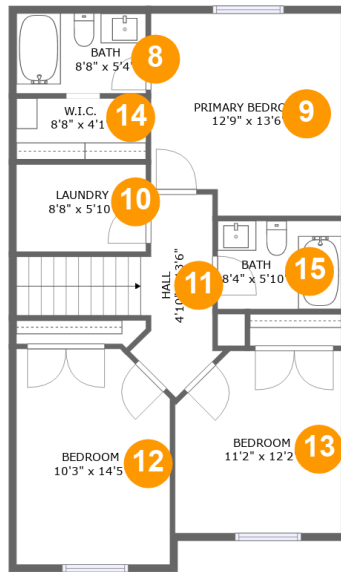
Floor 3

Total sqft: 571

Living area: 533

#	Room name	Dimensions	Area (sqft)	Counted as Living Area
5	Pantry	4'3" x 4'2"	16 sq. ft	Yes
6	Kitchen	13'2" x 13'3"	156 sq. ft	Yes
7	Living Room	13'2" x 20'6"	305 sq. ft	Yes

1737 Brynwood Ave, Chubbuck, Bannock County, Idaho, United States, 83202



Room Dimensions

Floor 4

Total sqft: 838

Living area: 838

#	Room name	Dimensions	Area (sqft)	Counted as Living Area
8	Bath	8'8" x 5'4"	46 sq. ft	Yes
9	Primary Bedroom	12'9" x 13'6"	165 sq. ft	Yes
10	Laundry	8'8" x 5'10"	51 sq. ft	Yes
11	Hall	4'10" x 13'6"	89 sq. ft	Yes
12	Bedroom	10'3" x 14'5"	143 sq. ft	Yes
13	Bedroom	11'2" x 12'2"	129 sq. ft	Yes
14	W.i.c.	8'8" x 4'1"	35 sq. ft	Yes
15	Bath	8'4" x 5'10"	49 sq. ft	Yes

1737 Brynwood Ave, Chubbuck, Bannock County, Idaho, United States, 83202

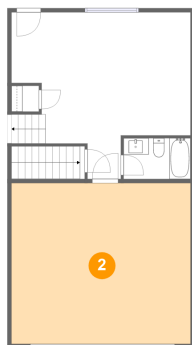
1 Floor 1 - Basement



Dimensions: 14'6" x 33'8"
Area: 479 sq. ft
Counted as Living Area: No

Heated: No
Finished: No
Enclosed: Yes
Contiguous: Yes
Permitted: Yes
Wet Space: No
Addition: No
Conversion: No

2 Floor 2 - Garage

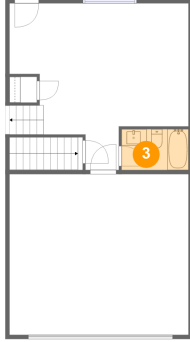


Dimensions: 21'9" x 19'6"
Area: 425 sq. ft
Counted as Living Area: No

Heated: No
Finished: No
Enclosed: Yes
Contiguous: Yes
Permitted: Yes
Wet Space: No
Addition: No
Conversion: No

1737 Brynwood Ave, Chubbuck, Bannock County, Idaho, United States, 83202

3 Floor 2 - Bath



Dimensions: 8'2" x 5'0"
Area: 40 sq. ft
Counted as Living Area:
Yes

Heated: Yes
Finished: Yes
Enclosed: Yes
Contiguous:
Yes
Permitted: Yes
Wet Space: Yes
Addition: No
Conversion: No

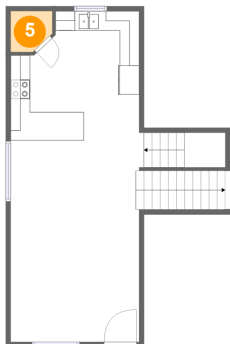
4 Floor 2 - Family Room



Dimensions: 21'9" x 20'3"
Area: 342 sq. ft
Counted as Living Area:
Yes

Heated: Yes
Finished: Yes
Enclosed: Yes
Contiguous:
Yes
Permitted: Yes
Wet Space: No
Addition: No
Conversion: No

5 Floor 3 - Pantry



Dimensions: 4'3" x 4'2"
Area: 16 sq. ft
Counted as Living Area:
Yes

Heated: Yes
Finished: Yes
Enclosed: Yes
Contiguous:
Yes
Permitted: Yes
Wet Space: No
Addition: No
Conversion: No

1737 Brynwood Ave, Chubbuck, Bannock County, Idaho, United States, 83202

6 Floor 3 - Kitchen



Dimensions: 13'2" x 13'3"
Area: 156 sq. ft
Counted as Living Area:
Yes

Heated: Yes
Finished: Yes
Enclosed: Yes
Contiguous:
Yes
Permitted: Yes
Wet Space: No
Addition: No
Conversion: No

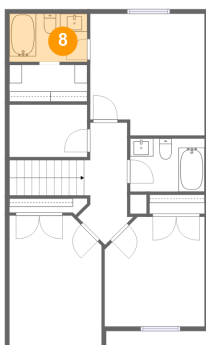
7 Floor 3 - Living Room



Dimensions: 13'2" x 20'6"
Area: 305 sq. ft
Counted as Living Area:
Yes

Heated: Yes
Finished: Yes
Enclosed: Yes
Contiguous:
Yes
Permitted: Yes
Wet Space: No
Addition: No
Conversion: No

8 Floor 4 - Bath

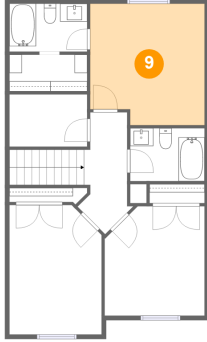


Dimensions: 8'8" x 5'4"
Area: 46 sq. ft
Counted as Living Area:
Yes

Heated: Yes
Finished: Yes
Enclosed: Yes
Contiguous:
Yes
Permitted: Yes
Wet Space: Yes
Addition: No
Conversion: No

**1737 Brynwood Ave, Chubbuck, Bannock County,
Idaho, United States, 83202**

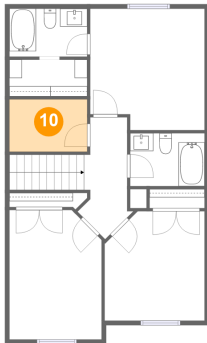
9 Floor 4 - Primary Bedroom



Dimensions: 12'9" x 13'6"
Area: 165 sq. ft
Counted as Living Area:
Yes

Heated: Yes
Finished: Yes
Enclosed: Yes
Contiguous:
Yes
Permitted: Yes
Wet Space: No
Addition: No
Conversion: No

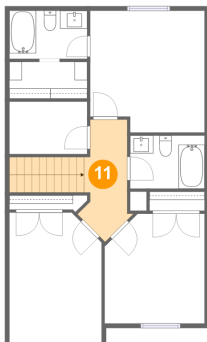
10 Floor 4 - Laundry



Dimensions: 8'8" x 5'10"
Area: 51 sq. ft
Counted as Living Area:
Yes

Heated: Yes
Finished: Yes
Enclosed: Yes
Contiguous:
Yes
Permitted: Yes
Wet Space: No
Addition: No
Conversion: No

11 Floor 4 - Hall

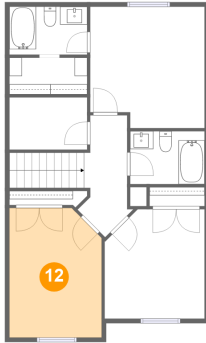


Dimensions: 4'10" x 13'6"
Area: 89 sq. ft
Counted as Living Area:
Yes

Heated: Yes
Finished: Yes
Enclosed: Yes
Contiguous:
Yes
Permitted: Yes
Wet Space: No
Addition: No
Conversion: No

1737 Brynwood Ave, Chubbuck, Bannock County, Idaho, United States, 83202

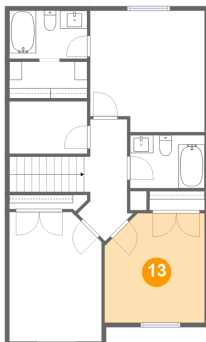
12 Floor 4 - Bedroom



Dimensions: 10'3" x 14'5"
Area: 143 sq. ft
Counted as Living Area:
Yes

Heated: Yes
Finished: Yes
Enclosed: Yes
Contiguous:
Yes
Permitted: Yes
Wet Space: No
Addition: No
Conversion: No

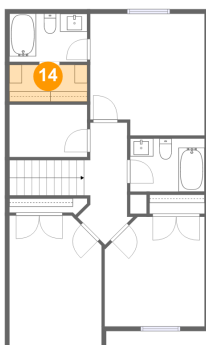
13 Floor 4 - Bedroom



Dimensions: 11'2" x 12'2"
Area: 129 sq. ft
Counted as Living Area:
Yes

Heated: Yes
Finished: Yes
Enclosed: Yes
Contiguous:
Yes
Permitted: Yes
Wet Space: No
Addition: No
Conversion: No

14 Floor 4 - W.i.c.

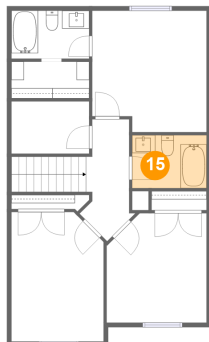


Dimensions: 8'8" x 4'1"
Area: 35 sq. ft
Counted as Living Area:
Yes

Heated: Yes
Finished: Yes
Enclosed: Yes
Contiguous:
Yes
Permitted: Yes
Wet Space: No
Addition: No
Conversion: No

**1737 Brynwood Ave, Chubbuck, Bannock County,
Idaho, United States, 83202**

15 Floor 4 - Bath



Dimensions: 8'4" x 5'10"
Area: 49 sq. ft
Counted as Living Area:
Yes

Heated: Yes
Finished: Yes
Enclosed: Yes
Contiguous:
Yes
Permitted: Yes
Wet Space: Yes
Addition: No
Conversion: No