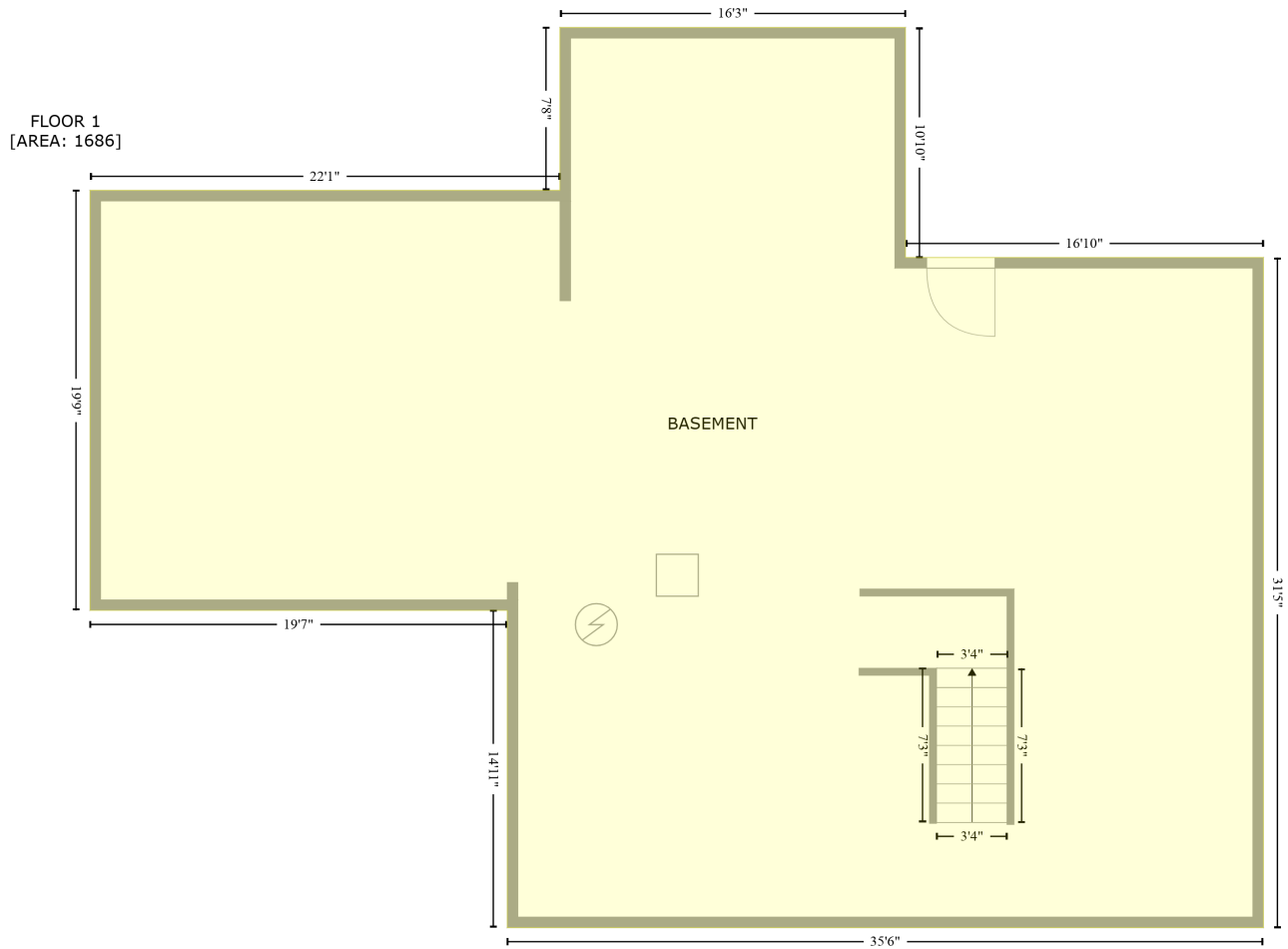


# 611 Maddex Farm Drive, Shepherdstown, Jefferson County, West Virginia, United States, 25443

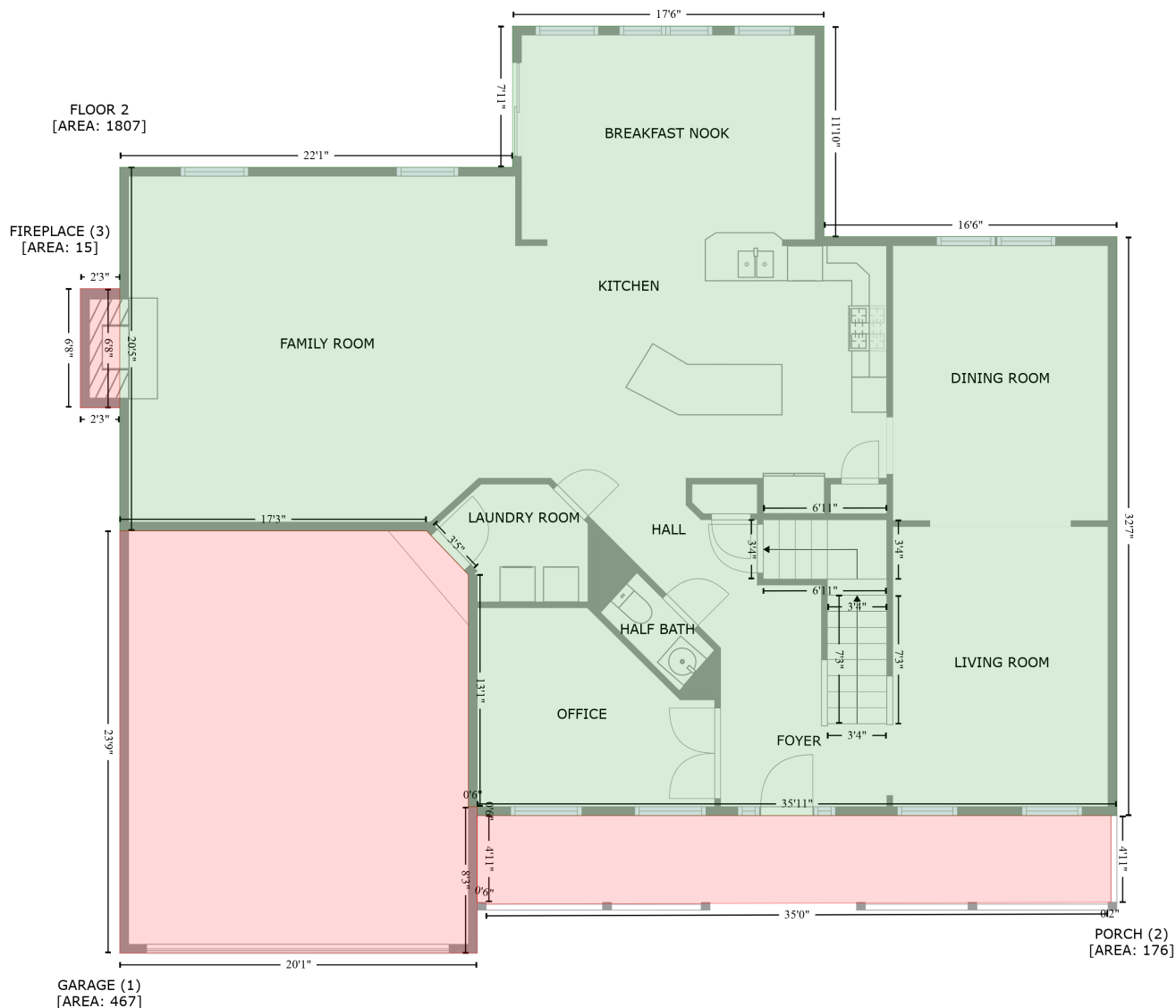
Gross Living Area: 3414 sq. ft



Space	Area (sq. ft)	Calculation <small>Coordinate Polygon Area Algorithm using inches</small>
FLOOR 1 (Living area)	1686	$  \begin{aligned}  & -((454.3 + 454.3) * (16.2 - 145.7) + (454.3 + 656.1) * (145.7 - 145.7) + (656.1 + 656.1) * (145.7 - \\  & 523.1) + (656.1 + 229.8) * (523.1 - 523.1) + (229.8 + 229.8) * (523.1 - 344.5) + (229.8 + -5.4) * \\  & (344.5 - 344.5) + (-5.4 + -5.4) * (344.5 - 107.9) + (-5.4 + 259.5) * (107.9 - 107.9) + (259.5 + 259.5) \\  & * (107.9 - 16.2) + (259.5 + 454.3) * (16.2 - 16.2)) * 0.5 * 0.00694  \end{aligned}  $

# 611 Maddex Farm Drive, Shepherdstown, Jefferson County, West Virginia, United States, 25443

Gross Living Area: 3414 sq. ft



Space	Area (sq. ft)	Calculation
FLOOR 2 (Living area)	1807	Coordinate Polygon Area Algorithm using inches $-((459 + 459) * (10.6 - 152.7) + (459 + 656.6) * (152.7 - 152.7) + (656.6 + 656.6) * (152.7 - 543.4) + (656.6 + 225.1) * (543.4 - 543.4) + (225.1 + 225.1) * (543.4 - 537.4) + (225.1 + 219.1) * (537.4 - 537.4) + (219.1 + 219.1) * (537.4 - 380.8) + (219.1 + 191) * (380.8 - 351.3) + (191 + -16) * (351.3 - 351.3) + (-16 + -16) * (351.3 - 105.8) + (-16 + 248.9) * (105.8 - 105.8) + (248.9 + 248.9) * (105.8 - 10.6) + (248.9 + 459) * (10.6 - 10.6)) * 0.5 * 0.00694$
GARAGE (Non-living area)	467	$-((191 + 219.1) * (351.3 - 380.8) + (219.1 + 219.1) * (380.8 - 537.4) + (219.1 + 225.1) * (537.4 - 537.4) + (225.1 + 225.1) * (537.4 - 636.3) + (225.1 + -16) * (636.3 - 636.3) + (-16 + -16) * (636.3 - 351.3) + (-16 + 191) * (351.3 - 351.3)) * 0.5 * 0.00694$
PORCH	176	$-((652.6 + 652.6) * (543.4 - 602) + (652.6 + 650.7) * (602 - 602) + (650.7 + 231.1) * (602 - 603.2)$

# 611 Maddex Farm Drive, Shepherdstown, Jefferson County, West Virginia, United States, 25443

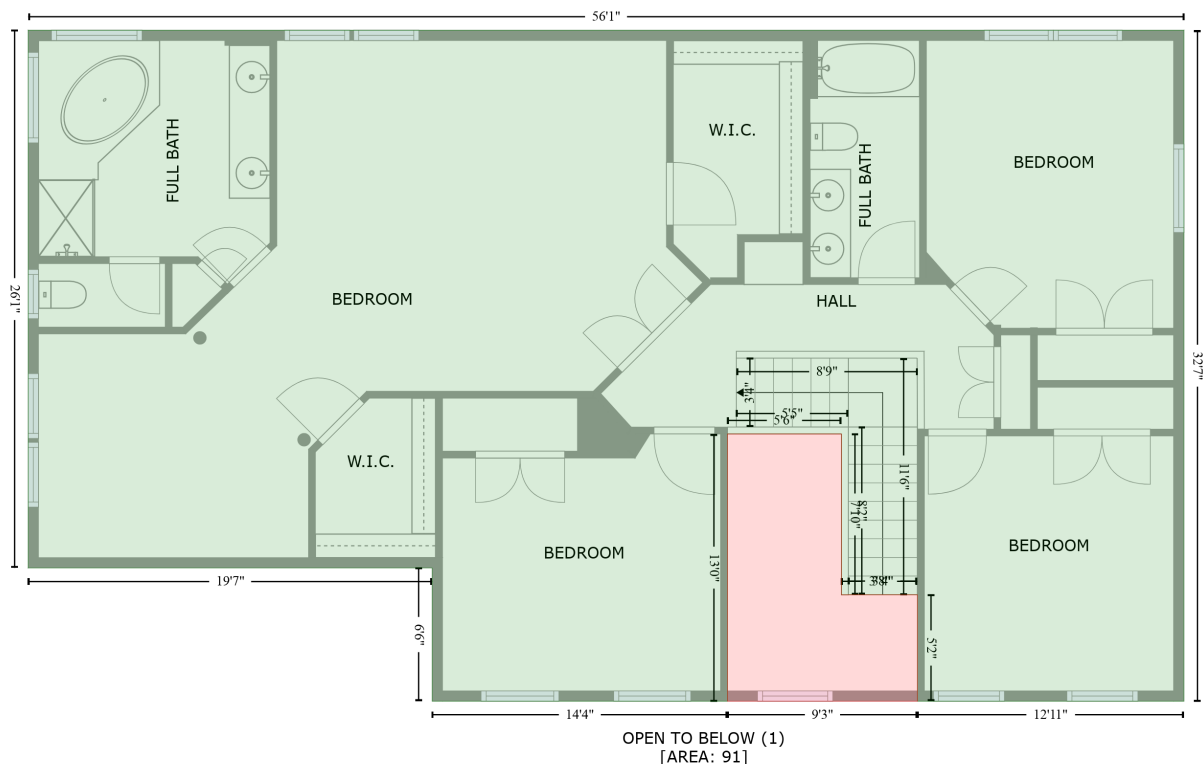
Gross Living Area: 3414 sq. ft

Space	Area (sq. ft)	Calculation <small>Coordinate Polygon Area Algorithm using inches</small>
(Non-living area)		$+ (231.1 + 225.1) * (603.2 - 602) + (225.1 + 225.1) * (602 - 543.4) + (225.1 + 652.6) * (543.4 - 543.4) * 0.5 * 0.00694$
FIREPLACE (Non-living area)	15	$-((-16 + -16) * (187.8 - 268.1) + (-16 + -42.6) * (268.1 - 268.1) + (-42.6 + -42.6) * (268.1 - 187.8) + (-42.6 + -16) * (187.8 - 187.8)) * 0.5 * 0.00694$

# 611 Maddex Farm Drive, Shepherdstown, Jefferson County, West Virginia, United States, 25443

Gross Living Area: 3414 sq. ft

FLOOR 3  
[AREA: 1607]



Space	Area (sq. ft)	Calculation <small>Coordinate Polygon Area Algorithm using inches</small>
FLOOR 3 (Living area)	1607	$  \begin{aligned}  & -((664.6 + 664.6) * (148.1 - 538.8) + (664.6 + 509.6) * (538.8 - 538.8) + (509.6 + 509.6) * (538.8 - \\  & 476.9) + (509.6 + 465.3) * (476.9 - 476.9) + (465.3 + 465.3) * (476.9 - 383.2) + (465.3 + 399) * \\  & (383.2 - 383.2) + (399 + 399) * (383.2 - 538.8) + (399 + 227.2) * (538.8 - 538.8) + (227.2 + 227.2) \\  & * (538.8 - 461.2) + (227.2 + -7.9) * (461.2 - 461.2) + (-7.9 + -7.9) * (461.2 - 148.1) + (-7.9 + 664.6) \\  & * (148.1 - 148.1)) * 0.5 * 0.00694  \end{aligned}  $
OPEN TO BELOW (Non-living area)	91	$  \begin{aligned}  & -((465.3 + 465.3) * (383.2 - 476.9) + (465.3 + 509.6) * (476.9 - 476.9) + (509.6 + 509.6) * (476.9 - \\  & 538.8) + (509.6 + 399) * (538.8 - 538.8) + (399 + 399) * (538.8 - 383.2) + (399 + 465.3) * (383.2 - \\  & 383.2)) * 0.5 * 0.00694  \end{aligned}  $