

Home report

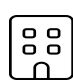
207 Hillcrest Drive, High Point, Guilford County, North Carolina,
United States, 27262



Total Area: 4616 sq. ft

Below Ground: 364 sq. ft, Floor 2: 2447 sq. ft, Floor 3: 1805 sq. ft, Floor 4: 0 sq. ft
Excluded: Utility 194 sq. ft, Hall 132 sq. ft, Storage 182 sq. ft, Fireplace 12 sq. ft, Low ceiling 68 sq. ft, Attic 280 sq. ft, Walls: 360 sq. ft

Property summary

**4** Floors

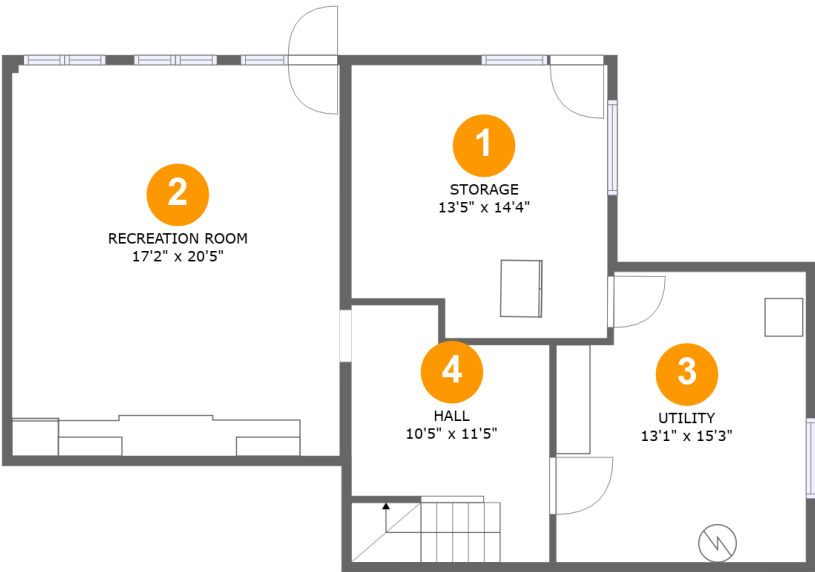
**4** Bedrooms

**5** Bathrooms

**1** Half baths

Home report

207 Hillcrest Drive, High Point, Guilford County, North Carolina,
United States, 27262



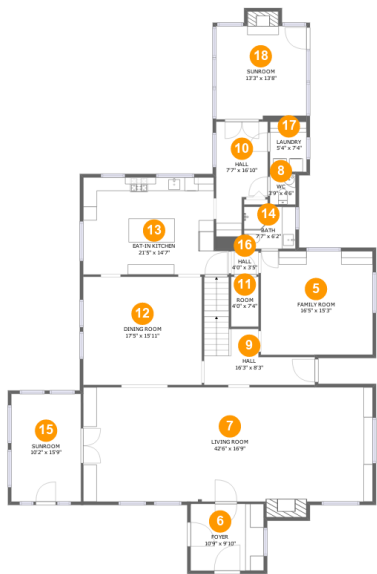
Room dimensions

Floor 1 Below ground Total:364sqft Excluded: 508sqft

#		Max Dimensions	sqft	Included
1	Storage	13'5" x 14'4"	182 sq. ft	No
2	Recreation Room	17'2" x 20'5"	352 sq. ft	Yes
3	Utility	13'1" x 15'3"	188 sq. ft	No
4	Hall	10'5" x 11'5"	127 sq. ft	No

Home report

207 Hillcrest Drive, High Point, Guilford County, North Carolina,
United States, 27262



Room dimensions

Floor 2

Total:2447sqft

Excluded: 12sqft

#		Max Dimensions	sqft	Included
5	Family Room	16'5" x 15'3"	250 sq. ft	Yes
6	Foyer	10'9" x 9'10"	105 sq. ft	Yes
7	Living Room	42'6" x 16'9"	727 sq. ft	Yes
8	WC	3'9" x 4'6"	17 sq. ft	Yes
9	Hall	16'3" x 8'3"	128 sq. ft	Yes
10	Hall	7'7" x 16'10"	113 sq. ft	Yes
11	Room	4'0" x 7'4"	29 sq. ft	Yes
12	Dining Room	17'5" x 15'11"	277 sq. ft	Yes
13	Eat-in Kitchen	21'5" x 14'7"	283 sq. ft	Yes
14	Bath	7'7" x 6'2"	47 sq. ft	Yes
15	Sunroom	10'2" x 15'9"	162 sq. ft	Yes

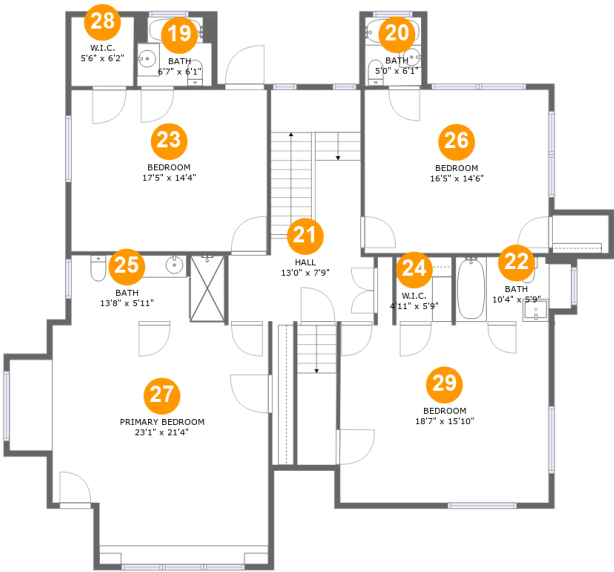
Home report

**207 Hillcrest Drive, High Point, Guilford County, North Carolina,
United States, 27262**

#		Max Dimensions	sqft	Included
16	Hall	4'0" x 3'5"	14 sq. ft	Yes
17	Laundry	5'4" x 7'4"	40 sq. ft	Yes
18	Sunroom	13'3" x 13'8"	188 sq. ft	Yes

Home report

207 Hillcrest Drive, High Point, Guilford County, North Carolina,
United States, 27262



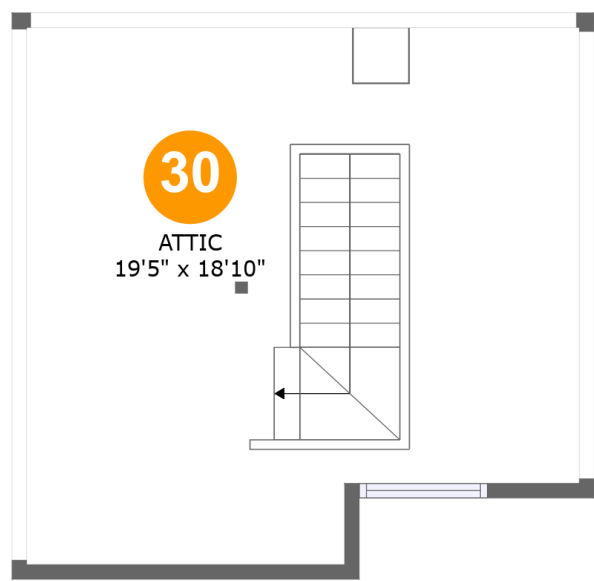
Room dimensions

Floor 3 Total:1805sqft Excluded: 5sqft

#		Max Dimensions	sqft	Included
19	Bath	6'7" x 6'1"	41 sq. ft	Yes
20	Bath	5'0" x 6'1"	31 sq. ft	Yes
21	Hall	13'0" x 7'9"	194 sq. ft	Yes
22	Bath	10'4" x 5'9"	57 sq. ft	Yes
23	Bedroom	17'5" x 14'4"	251 sq. ft	Yes
24	W.I.C.	4'11" x 5'9"	28 sq. ft	Yes
25	Bath	13'8" x 5'11"	80 sq. ft	Yes
26	Bedroom	16'5" x 14'6"	239 sq. ft	Yes
27	Primary Bedroom	23'1" x 21'4"	418 sq. ft	Yes
28	W.I.C.	5'6" x 6'2"	34 sq. ft	Yes
29	Bedroom	18'7" x 15'10"	294 sq. ft	Yes

Home report

207 Hillcrest Drive, High Point, Guilford County, North Carolina,
United States, 27262



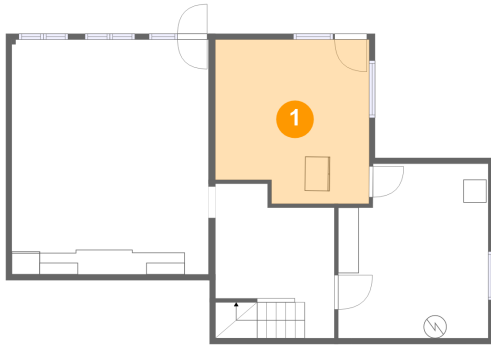
Room dimensions

Floor 4 Total:0sqft Excluded: 343sqft

#		Max Dimensions	sqft	Included
30	Attic	19'5" x 18'10"	280 sq. ft	No

207 Hillcrest Drive, High Point, Guilford County, North Carolina,
United States, 27262

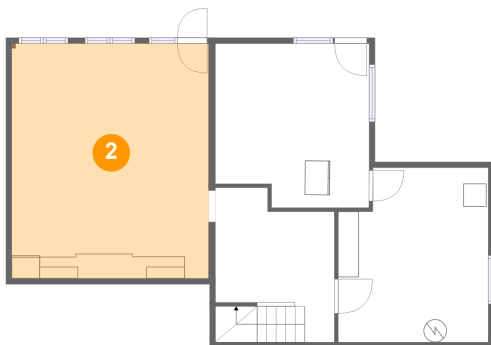
1 Floor 1 - Storage



Max Dimensions: 13'5" x
14'4"
Calculated Area: 182 sq. ft
Included: No

Heated: No
Finished: No
Enclosed: No
Contiguous:
Yes
Permitted: Yes
Wet space: No
Addition: No
Conversion: No

2 Floor 1 - Recreation Room

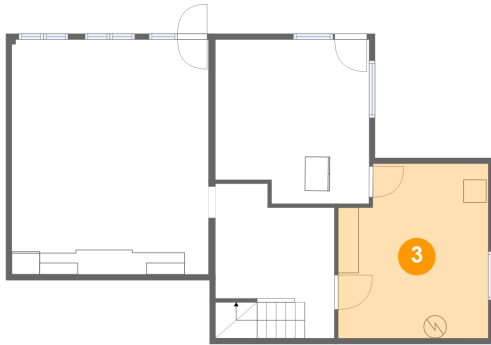


Max Dimensions: 17'2" x
20'5"
Calculated Area: 352 sq. ft
Included: Yes

Heated: Yes
Finished: Yes
Enclosed: Yes
Contiguous:
Yes
Permitted: Yes
Wet space: No
Addition: No
Conversion: No

207 Hillcrest Drive, High Point, Guilford County, North Carolina,
United States, 27262

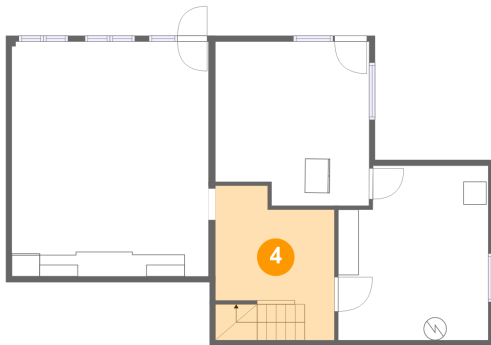
3 Floor 1 - Utility



Max Dimensions: 13'1" x 15'3"
Calculated Area: 188 sq. ft
Included: No

Heated: No
Finished: No
Enclosed: Yes
Contiguous: Yes
Permitted: Yes
Wet space: No
Addition: No
Conversion: No

4 Floor 1 - Hall



Max Dimensions: 10'5" x 11'5"
Calculated Area: 127 sq. ft
Included: No

Heated: Yes
Finished: No
Enclosed: Yes
Contiguous: Yes
Permitted: Yes
Wet space: No
Addition: No
Conversion: No

5 Floor 2 - Family Room



Max Dimensions: 16'5" x 15'3"
Calculated Area: 250 sq. ft
Included: Yes

Heated: Yes
Finished: Yes
Enclosed: Yes
Contiguous: Yes
Permitted: Yes
Wet space: No
Addition: No
Conversion: No

207 Hillcrest Drive, High Point, Guilford County, North Carolina,
United States, 27262

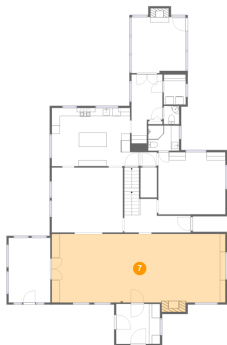
6 Floor 2 - Foyer



Max Dimensions: 10'9" x 9'10"
Calculated Area: 105 sq. ft
Included: Yes

Heated: Yes
Finished: Yes
Enclosed: Yes
Contiguous: Yes
Permitted: Yes
Wet space: No
Addition: No
Conversion: No

7 Floor 2 - Living Room



Max Dimensions: 42'6" x 16'9"
Calculated Area: 727 sq. ft
Included: Yes

Heated: Yes
Finished: Yes
Enclosed: Yes
Contiguous: Yes
Permitted: Yes
Wet space: No
Addition: No
Conversion: No

8 Floor 2 - WC



Max Dimensions: 3'9" x 4'6"
Calculated Area: 17 sq. ft
Included: Yes

Heated: Yes
Finished: Yes
Enclosed: Yes
Contiguous: Yes
Permitted: Yes
Wet space: No
Addition: No
Conversion: No

9 Floor 2 - Hall



Max Dimensions: 16'3" x 8'3"
Calculated Area: 128 sq. ft
Included: Yes

Heated: Yes
Finished: Yes
Enclosed: Yes
Contiguous: Yes
Permitted: Yes
Wet space: No
Addition: No
Conversion: No

10 Floor 2 - Hall



Max Dimensions: 7'7" x 16'10"
Calculated Area: 113 sq. ft
Included: Yes

Heated: Yes
Finished: Yes
Enclosed: Yes
Contiguous: Yes
Permitted: Yes
Wet space: No
Addition: No
Conversion: No

11 Floor 2 - Room



Max Dimensions: 4'0" x 7'4"
Calculated Area: 29 sq. ft
Included: Yes

Heated: Yes
Finished: Yes
Enclosed: Yes
Contiguous: Yes
Permitted: Yes
Wet space: No
Addition: No
Conversion: No

207 Hillcrest Drive, High Point, Guilford County, North Carolina,
United States, 27262

12 Floor 2 - Dining Room



Max Dimensions: 17'5" x 15'11"
Calculated Area: 277 sq. ft
Included: Yes

Heated: Yes
Finished: Yes
Enclosed: Yes
Contiguous: Yes
Permitted: Yes
Wet space: No
Addition: No
Conversion: No

13 Floor 2 - Eat-in Kitchen



Max Dimensions: 21'5" x 14'7"
Calculated Area: 283 sq. ft
Included: Yes

Heated: Yes
Finished: Yes
Enclosed: Yes
Contiguous: Yes
Permitted: Yes
Wet space: No
Addition: No
Conversion: No

14 Floor 2 - Bath



Max Dimensions: 7'7" x 6'2"
Calculated Area: 47 sq. ft
Included: Yes

Heated: Yes
Finished: Yes
Enclosed: Yes
Contiguous: Yes
Permitted: Yes
Wet space: Yes
Addition: No
Conversion: No

207 Hillcrest Drive, High Point, Guilford County, North Carolina,
United States, 27262

15 Floor 2 - Sunroom



Max Dimensions: 10'2" x 15'9"
Calculated Area: 162 sq. ft
Included: No

Heated: No
Finished: Yes
Enclosed: Yes
Contiguous: Yes
Permitted: Yes
Wet space: No
Addition: No
Conversion: No

16 Floor 2 - Hall



Max Dimensions: 4'0" x 3'5"
Calculated Area: 14 sq. ft
Included: Yes

Heated: Yes
Finished: Yes
Enclosed: Yes
Contiguous: Yes
Permitted: Yes
Wet space: No
Addition: No
Conversion: No

17 Floor 2 - Laundry



Max Dimensions: 5'4" x 7'4"
Calculated Area: 40 sq. ft
Included: Yes

Heated: Yes
Finished: Yes
Enclosed: Yes
Contiguous: Yes
Permitted: Yes
Wet space: No
Addition: No
Conversion: No

207 Hillcrest Drive, High Point, Guilford County, North Carolina,
United States, 27262

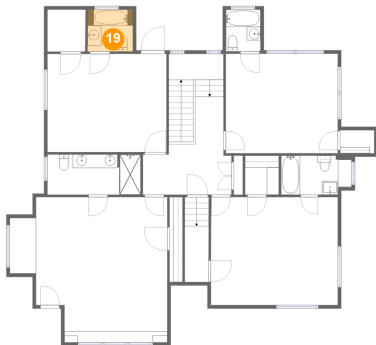
18 Floor 2 - Sunroom



Max Dimensions: 13'3" x 13'8"
Calculated Area: 188 sq. ft
Included: No

Heated: No
Finished: Yes
Enclosed: Yes
Contiguous: Yes
Permitted: Yes
Wet space: No
Addition: No
Conversion: No

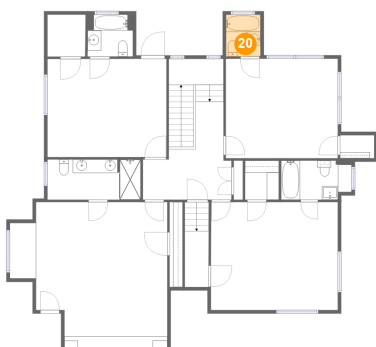
19 Floor 3 - Bath



Max Dimensions: 6'7" x 6'1"
Calculated Area: 41 sq. ft
Included: Yes

Heated: Yes
Finished: Yes
Enclosed: Yes
Contiguous: Yes
Permitted: Yes
Wet space: Yes
Addition: No
Conversion: No

20 Floor 3 - Bath

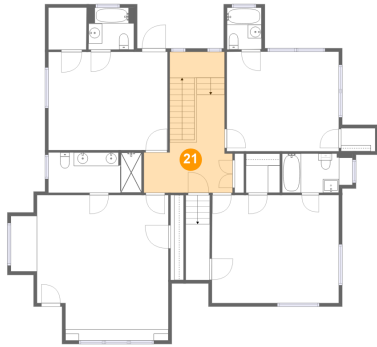


Max Dimensions: 5'0" x 6'1"
Calculated Area: 31 sq. ft
Included: Yes

Heated: Yes
Finished: Yes
Enclosed: Yes
Contiguous: Yes
Permitted: Yes
Wet space: Yes
Addition: No
Conversion: No

207 Hillcrest Drive, High Point, Guilford County, North Carolina,
United States, 27262

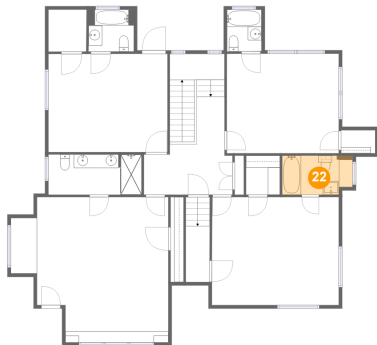
21 Floor 3 - Hall



Max Dimensions: 13'0" x 7'9"
Calculated Area: 194 sq. ft
Included: Yes

Heated: Yes
Finished: Yes
Enclosed: Yes
Contiguous: Yes
Permitted: Yes
Wet space: No
Addition: No
Conversion: No

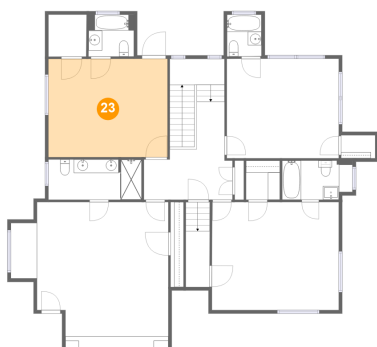
22 Floor 3 - Bath



Max Dimensions: 10'4" x 5'9"
Calculated Area: 57 sq. ft
Included: Yes

Heated: Yes
Finished: Yes
Enclosed: Yes
Contiguous: Yes
Permitted: Yes
Wet space: Yes
Addition: No
Conversion: No

23 Floor 3 - Bedroom

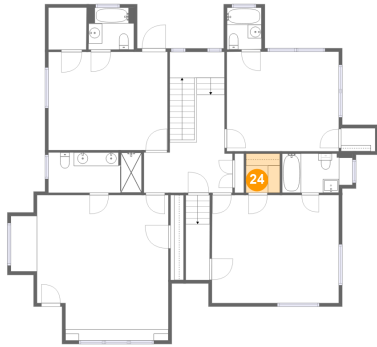


Max Dimensions: 17'5" x 14'4"
Calculated Area: 251 sq. ft
Included: Yes

Heated: Yes
Finished: Yes
Enclosed: Yes
Contiguous: Yes
Permitted: Yes
Wet space: No
Addition: No
Conversion: No

207 Hillcrest Drive, High Point, Guilford County, North Carolina,
United States, 27262

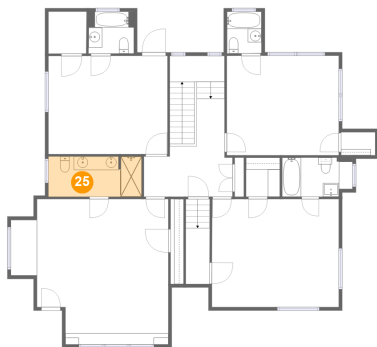
24 Floor 3 - W.I.C.



Max Dimensions: 4'11" x 5'9"
Calculated Area: 28 sq. ft
Included: Yes

Heated: Yes
Finished: Yes
Enclosed: Yes
Contiguous: Yes
Permitted: Yes
Wet space: No
Addition: No
Conversion: No

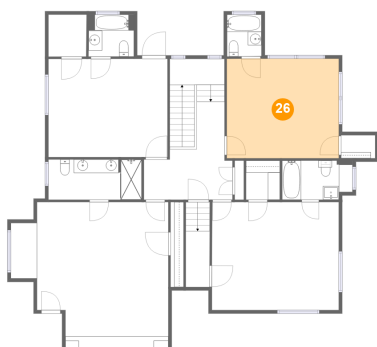
25 Floor 3 - Bath



Max Dimensions: 13'8" x 5'11"
Calculated Area: 80 sq. ft
Included: Yes

Heated: Yes
Finished: Yes
Enclosed: Yes
Contiguous: Yes
Permitted: Yes
Wet space: Yes
Addition: No
Conversion: No

26 Floor 3 - Bedroom

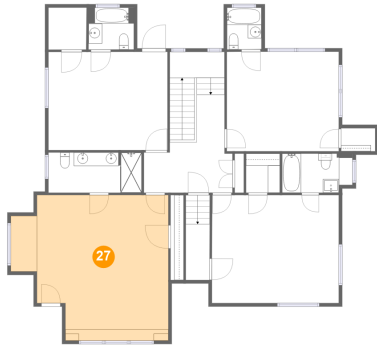


Max Dimensions: 16'5" x 14'6"
Calculated Area: 239 sq. ft
Included: Yes

Heated: Yes
Finished: Yes
Enclosed: Yes
Contiguous: Yes
Permitted: Yes
Wet space: No
Addition: No
Conversion: No

207 Hillcrest Drive, High Point, Guilford County, North Carolina,
United States, 27262

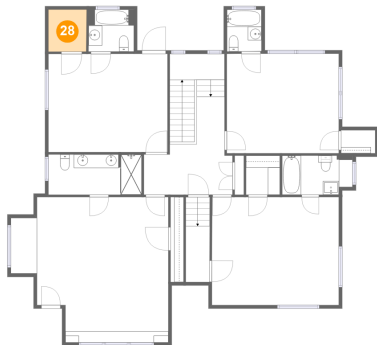
27 Floor 3 - Primary Bedroom



Max Dimensions: 23'1" x 21'4"
Calculated Area: 418 sq. ft
Included: Yes

Heated: Yes
Finished: Yes
Enclosed: Yes
Contiguous: Yes
Permitted: Yes
Wet space: No
Addition: No
Conversion: No

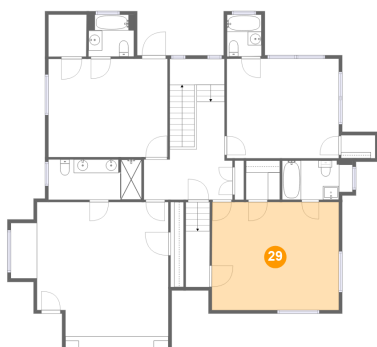
28 Floor 3 - W.I.C.



Max Dimensions: 5'6" x 6'2"
Calculated Area: 34 sq. ft
Included: Yes

Heated: Yes
Finished: Yes
Enclosed: Yes
Contiguous: Yes
Permitted: Yes
Wet space: No
Addition: No
Conversion: No

29 Floor 3 - Bedroom

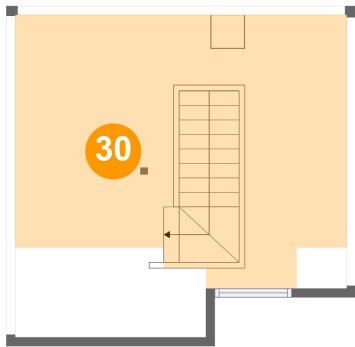


Max Dimensions: 18'7" x 15'10"
Calculated Area: 294 sq. ft
Included: Yes

Heated: Yes
Finished: Yes
Enclosed: Yes
Contiguous: Yes
Permitted: Yes
Wet space: No
Addition: No
Conversion: No

207 Hillcrest Drive, High Point, Guilford County, North Carolina,
United States, 27262

30 Floor 4 - Attic



Max Dimensions: 19'5" x 18'10"
Calculated Area: 280 sq. ft
Included: No

Heated: No
Finished: No
Enclosed: Yes
Contiguous: Yes
Permitted: Yes
Wet space: No
Addition: No
Conversion: No