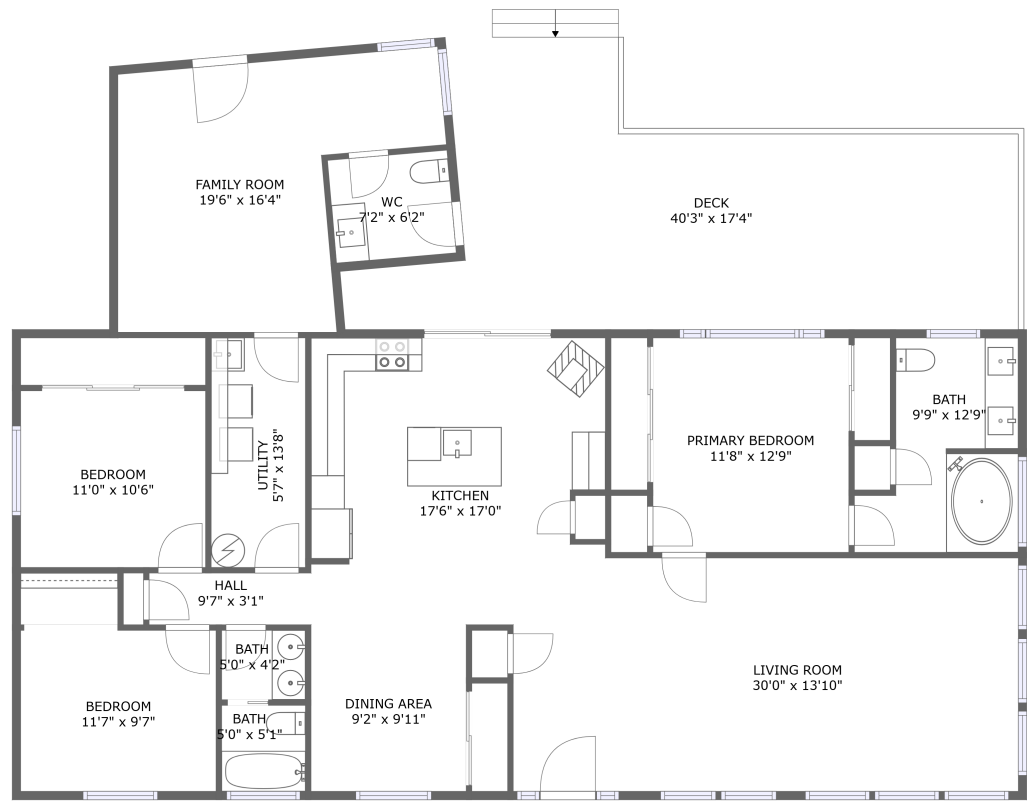



Home report


16202 South Kepler Drive, Holcomb-Outlook, Oregon City,
Clackamas County, Oregon, United States, 97045





FLOOR 1

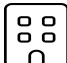
Property summary


**0**
Garages


**3**
Bedrooms

**2**
Bathrooms

**1**
Half baths

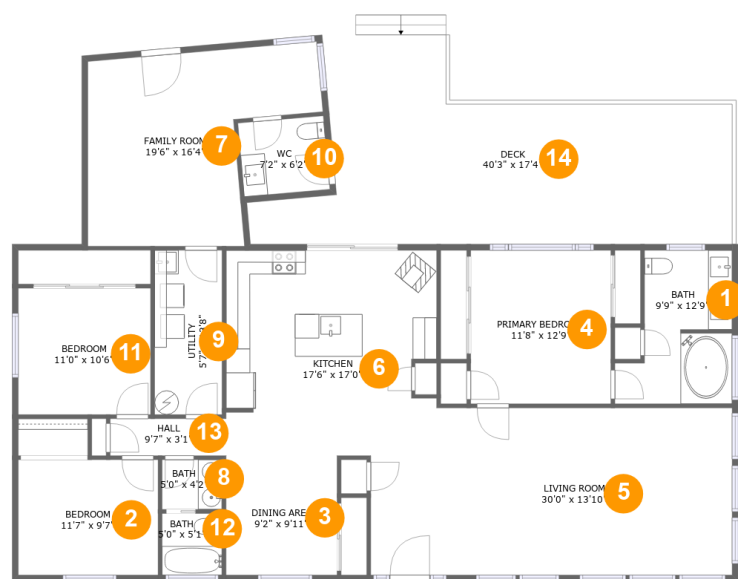
**1**
Floors

**1,998**
Gross living
area sqft

**2,468**
Total sqft

Home report

16202 South Kepler Drive, Holcomb-Outlook, Oregon City,
Clackamas County, Oregon, United States, 97045



Room dimensions

Floor 1 Total sqft: 2468 Living area: 1998

#		Dimensions	sqft	Counted as living area
1	Bath	9'9" x 12'9"	100 sq. ft	Yes
2	Bedroom	11'7" x 9'7"	111 sq. ft	Yes
3	Dining Area	9'2" x 9'11"	91 sq. ft	Yes
4	Primary Bedroom	11'8" x 12'9"	148 sq. ft	Yes
5	Living Room	30'0" x 13'10"	395 sq. ft	Yes
6	Kitchen	17'6" x 17'0"	291 sq. ft	Yes
7	Family Room	19'6" x 16'4"	239 sq. ft	Yes
8	Bath	5'0" x 4'2"	21 sq. ft	Yes
9	Utility	5'7" x 13'8"	76 sq. ft	Yes
10	WC	7'2" x 6'2"	44 sq. ft	Yes
11	Bedroom	11'0" x 10'6"	115 sq. ft	Yes

Home report

16202 South Kepler Drive, Holcomb-Outlook, Oregon City,
Clackamas County, Oregon, United States, 97045

#		Dimensions	sqft	Counted as living area
12	Bath	5'0" x 5'1"	25 sq. ft	Yes
13	Hall	9'7" x 3'1"	30 sq. ft	Yes
14	Deck	40'3" x 17'4"	470 sq. ft	No

16202 South Kepler Drive, Holcomb-Outlook, Oregon City,
Clackamas County, Oregon, United States, 97045

1 Floor 1 - Bath



Dimensions: 9'9" x 12'9"
Area: 100 sq. ft
Counted as living area: Yes

Heated: Yes
Finished: Yes
Enclosed: Yes
Contiguous: Yes
Permitted: Yes
Wet space: Yes
Addition: No
Conversion: No

2 Floor 1 - Bedroom



Dimensions: 11'7" x 9'7"
Area: 111 sq. ft
Counted as living area: Yes

Heated: Yes
Finished: Yes
Enclosed: Yes
Contiguous: Yes
Permitted: Yes
Wet space: No
Addition: No
Conversion: No

16202 South Kepler Drive, Holcomb-Outlook, Oregon City,
Clackamas County, Oregon, United States, 97045

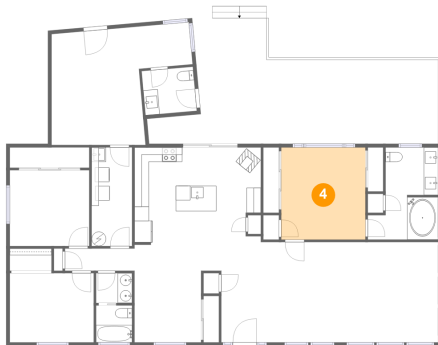
3 Floor 1 - Dining Area



Dimensions: 9'2" x 9'11"
Area: 91 sq. ft
Counted as living area: Yes

Heated: Yes
Finished: Yes
Enclosed: Yes
Contiguous: Yes
Permitted: Yes
Wet space: No
Addition: No
Conversion: No

4 Floor 1 - Primary Bedroom



Dimensions: 11'8" x 12'9"
Area: 148 sq. ft
Counted as living area: Yes

Heated: Yes
Finished: Yes
Enclosed: Yes
Contiguous: Yes
Permitted: Yes
Wet space: No
Addition: No
Conversion: No

5 Floor 1 - Living Room



Dimensions: 30'0" x 13'10"
Area: 395 sq. ft
Counted as living area: Yes

Heated: Yes
Finished: Yes
Enclosed: Yes
Contiguous: Yes
Permitted: Yes
Wet space: No
Addition: No
Conversion: No

Home report

16202 South Kepler Drive, Holcomb-Outlook, Oregon City,
Clackamas County, Oregon, United States, 97045

6 Floor 1 - Kitchen



Dimensions: 17'6" x 17'0"
Area: 291 sq. ft
Counted as living area: Yes

Heated: Yes
Finished: Yes
Enclosed: Yes
Contiguous: Yes
Permitted: Yes
Wet space: No
Addition: No
Conversion: No

7 Floor 1 - Family Room



Dimensions: 19'6" x 16'4"
Area: 239 sq. ft
Counted as living area: Yes

Heated: Yes
Finished: Yes
Enclosed: Yes
Contiguous: Yes
Permitted: Yes
Wet space: No
Addition: No
Conversion: No

8 Floor 1 - Bath



Dimensions: 5'0" x 4'2"
Area: 21 sq. ft
Counted as living area: Yes

Heated: Yes
Finished: Yes
Enclosed: Yes
Contiguous: Yes
Permitted: Yes
Wet space: Yes
Addition: No
Conversion: No

16202 South Kepler Drive, Holcomb-Outlook, Oregon City,
Clackamas County, Oregon, United States, 97045

9 Floor 1 - Utility



Dimensions: 5'7" x 13'8"
Area: 76 sq. ft
Counted as living area: Yes

Heated: Yes
Finished: Yes
Enclosed: Yes
Contiguous: Yes
Permitted: Yes
Wet space: No
Addition: No
Conversion: No

10 Floor 1 - WC



Dimensions: 7'2" x 6'2"
Area: 44 sq. ft
Counted as living area: Yes

Heated: Yes
Finished: Yes
Enclosed: Yes
Contiguous: Yes
Permitted: Yes
Wet space: Yes
Addition: No
Conversion: No

11 Floor 1 - Bedroom



Dimensions: 11'0" x 10'6"
Area: 115 sq. ft
Counted as living area: Yes

Heated: Yes
Finished: Yes
Enclosed: Yes
Contiguous: Yes
Permitted: Yes
Wet space: No
Addition: No
Conversion: No

Home report

16202 South Kepler Drive, Holcomb-Outlook, Oregon City,
Clackamas County, Oregon, United States, 97045

12 Floor 1 - Bath



Dimensions: 5'0" x 5'1"
Area: 25 sq. ft
Counted as living area: Yes

Heated: Yes
Finished: Yes
Enclosed: Yes
Contiguous: Yes
Permitted: Yes
Wet space: Yes
Addition: No
Conversion: No

13 Floor 1 - Hall



Dimensions: 9'7" x 3'1"
Area: 30 sq. ft
Counted as living area: Yes

Heated: Yes
Finished: Yes
Enclosed: Yes
Contiguous: Yes
Permitted: Yes
Wet space: No
Addition: No
Conversion: No

14 Floor 1 - Deck



Dimensions: 40'3" x 17'4"
Area: 470 sq. ft
Counted as living area: No

Heated: No
Finished: Yes
Enclosed: No
Contiguous: Yes
Permitted: Yes
Wet space: No
Addition: No
Conversion: No