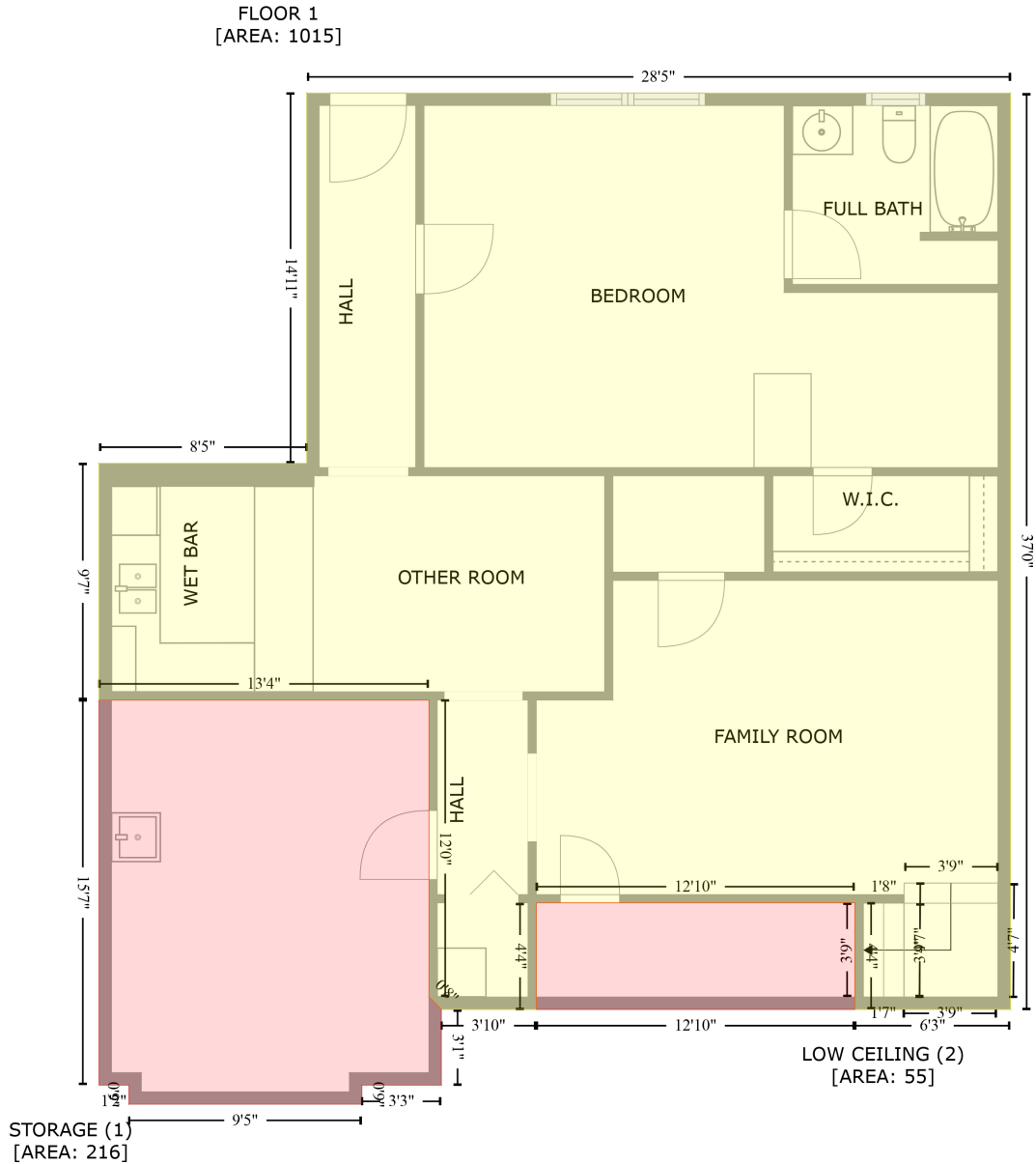


140 Artesian Ln NW, Madison, Alabama, United States

Gross Living Area: 1342 sq. ft



Space	Area (sq. ft)	Calculation <small>Coordinate Polygon Area Algorithm using inches</small>
FLOOR 1 (Living area)	1015	$-\left((524.1 + 524.1) * (76.5 - 520.5) + (524.1 + 448.7) * (520.5 - 520.5) + (448.7 + 448.7) * (520.5 - 468.9) + (448.7 + 294.3) * (468.9 - 468.9) + (294.3 + 294.3) * (468.9 - 520.5) + (294.3 + 248.2) * (520.5 - 520.5) + (248.2 + 242.2) * (520.5 - 514.5) + (242.2 + 242.2) * (514.5 - 370.6) + (242.2 + 82.3) * (370.6 - 370.6) + (82.3 + 82.3) * (370.6 - 255.9) + (82.3 + 183) * (255.9 - 255.9) + (183 + 183) * (255.9 - 76.5) + (183 + 524.1) * (76.5 - 76.5)\right) * 0.5 * 0.00694$
STORAGE	216	$-\left((242.2 + 242.2) * (370.6 - 514.5) + (242.2 + 248.2) * (514.5 - 520.5) + (248.2 + 248.2) * (520.5 - 520.5) + (248.2 + 248.2) * (520.5 - 468.9) + (248.2 + 294.3) * (468.9 - 468.9) + (294.3 + 294.3) * (468.9 - 520.5) + (294.3 + 248.2) * (520.5 - 520.5) + (248.2 + 242.2) * (520.5 - 514.5) + (242.2 + 242.2) * (514.5 - 370.6) + (242.2 + 82.3) * (370.6 - 370.6) + (82.3 + 82.3) * (370.6 - 255.9) + (82.3 + 183) * (255.9 - 255.9) + (183 + 183) * (255.9 - 76.5) + (183 + 524.1) * (76.5 - 76.5)\right) * 0.5 * 0.00694$

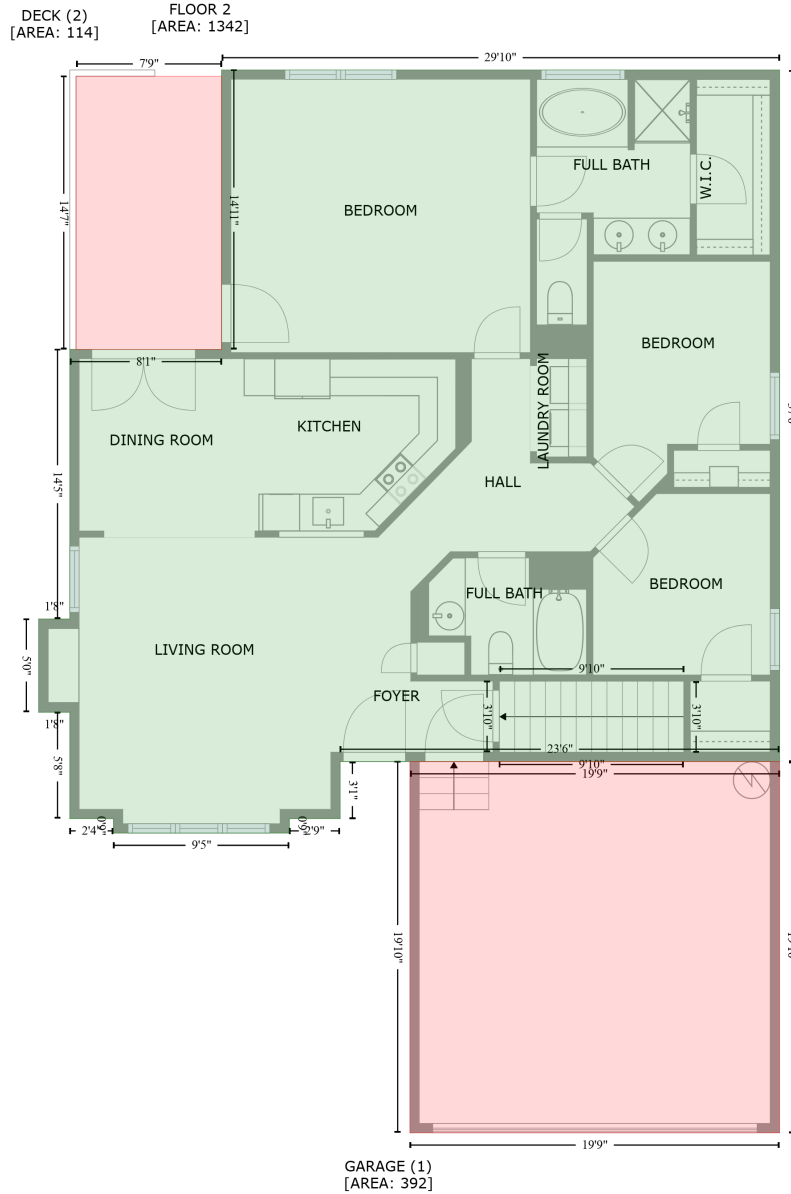
140 Artesian Ln NW, Madison, Alabama, United States

Gross Living Area: 1342 sq. ft

Space	Area (sq. ft)	Calculation <small>Coordinate Polygon Area Algorithm using inches</small>
(Non-living area)		$557.2 + (248.2 + 209.7) * (557.2 - 557.2) + (209.7 + 209.7) * (557.2 - 566.4) + (209.7 + 96.8) * (566.4 - 566.4) + (96.8 + 96.8) * (566.4 - 557.2) + (96.8 + 82.3) * (557.2 - 557.2) + (82.3 + 82.3) * (557.2 - 370.6) + (82.3 + 242.2) * (370.6 - 370.6) * 0.5 * 0.00694$
LOW CEILING (Non-living area)	55	$-((448.7 + 448.7) * (468.9 - 520.5) + (448.7 + 294.3) * (520.5 - 520.5) + (294.3 + 294.3) * (520.5 - 468.9) + (294.3 + 448.7) * (468.9 - 468.9)) * 0.5 * 0.00694$

140 Artesian Ln NW, Madison, Alabama, United States

Gross Living Area: 1342 sq. ft



Space	Area (sq. ft)	Calculation <small>Coordinate Polygon Area Algorithm using inches</small>
FLOOR 2 (Living area)	1342	$ \begin{aligned} & -((524.1 + 524.1) * (76.5 - 520.5) + (524.1 + 242.2) * (520.5 - 520.5) + (242.2 + 242.2) * (520.5 - \\ & 557.2) + (242.2 + 209.7) * (557.2 - 557.2) + (209.7 + 209.7) * (557.2 - 566.4) + (209.7 + 96.8) * \\ & (566.4 - 566.4) + (96.8 + 96.8) * (566.4 - 557.2) + (96.8 + 68.8) * (557.2 - 557.2) + (68.8 + 68.8) * \\ & (557.2 - 488.9) + (68.8 + 48.8) * (488.9 - 488.9) + (48.8 + 48.8) * (488.9 - 429) + (48.8 + 68.8) * \\ & (429 - 429) + (68.8 + 68.8) * (429 - 255.9) + (68.8 + 166.1) * (255.9 - 255.9) + (166.1 + 166.1) * \\ & (255.9 - 76.5) + (166.1 + 524.1) * (76.5 - 76.5)) * 0.5 * 0.00694 \end{aligned} $

140 Artesian Ln NW, Madison, Alabama, United States

Gross Living Area: 1342 sq. ft

Space	Area (sq. ft)	Calculation <small>Coordinate Polygon Area Algorithm using inches</small>
GARAGE (Non-living area)	392	$-((524.1 + 524.1) * (520.5 - 758.8) + (524.1 + 287) * (758.8 - 758.8) + (287 + 287) * (758.8 - 520.5) + (287 + 524.1) * (520.5 - 520.5)) * 0.5 * 0.00694$
DECK (Non-living area)	114	$-((166.1 + 166.1) * (80.5 - 255.9) + (166.1 + 72.8) * (255.9 - 255.9) + (72.8 + 72.8) * (255.9 - 80.5) + (72.8 + 166.1) * (80.5 - 80.5)) * 0.5 * 0.00694$