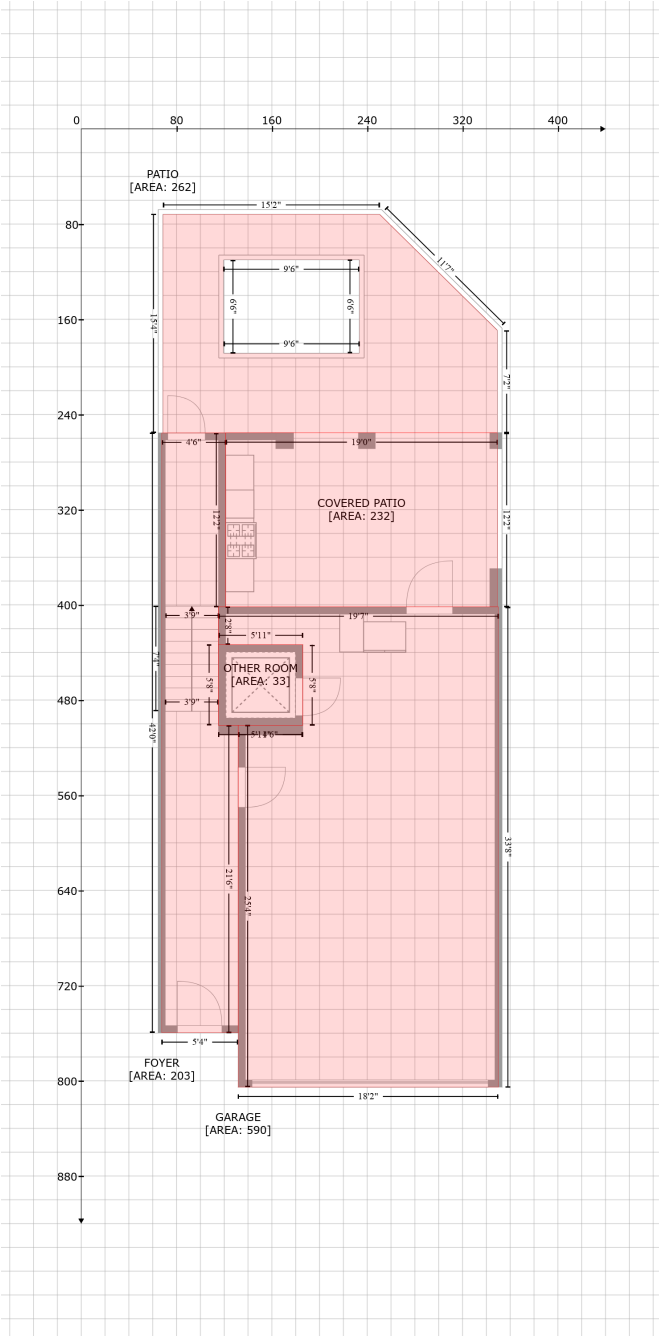


# 612 Sea Ct, Harbor Pointe, Dunedin, Pinellas County, Florida, United States, 34698

Gross Living Area: 2146 sq. ft



Space	Area (sq. ft)	Calculation <small>Coordinate Polygon Area Algorithm using inches</small>
OTHER ROOM (Non-living area)	33	$-((185.9 + 185.9) * (433.5 - 501.2) + (185.9 + 115.2) * (501.2 - 501.2) + (115.2 + 115.2) * (501.2 - 433.5) + (115.2 + 185.9) * (433.5 - 433.5)) * 0.5 * 0.00694$
GARAGE (Non-living area)	590	$-((350.2 + 350.2) * (401.7 - 805.4) + (350.2 + 131.8) * (805.4 - 805.4) + (131.8 + 131.8) * (805.4 - 501.2) + (131.8 + 185.9) * (501.2 - 501.2) + (185.9 + 185.9) * (501.2 - 433.5) + (185.9 + 115.2) * (433.5 - 433.5) + (115.2 + 115.2) * (433.5 - 401.7) + (115.2 + 350.2) * (401.7 - 401.7)) * 0.5 * 0.00694$

# 612 Sea Ct, Harbor Pointe, Dunedin, Pinellas County, Florida, United States, 34698

Gross Living Area: 2146 sq. ft

Space	Area (sq. ft)	Calculation <small>Coordinate Polygon Area Algorithm using inches</small>
FOYER (Non-living area)	203	$-\left((121.2 + 121.2) * (255.6 - 401.7) + (121.2 + 115.2) * (401.7 - 401.7) + (115.2 + 115.2) * (401.7 - 501.2) + (115.2 + 131.8) * (501.2 - 501.2) + (131.8 + 131.8) * (501.2 - 759.6) + (131.8 + 67.6) * (759.6 - 759.6) + (67.6 + 67.6) * (759.6 - 255.6) + (67.6 + 121.2) * (255.6 - 255.6)\right) * 0.5 * 0.00694$
COVERED PATIO (Non-living area)	232	$-\left((349.2 + 349.2) * (255.4 - 401.7) + (349.2 + 121.3) * (401.7 - 401.7) + (121.3 + 121.3) * (401.7 - 401.1) + (121.3 + 121.3) * (401.1 - 255.4) + (121.3 + 349.2) * (255.4 - 255.4)\right) * 0.5 * 0.00694$
PATIO (Non-living area)	262	$-\left((250.4 + 349.2) * (71.8 - 169.2) + (349.2 + 349.2) * (169.2 - 255.4) + (349.2 + 121.3) * (255.4 - 255.4) + (121.3 + 68.6) * (255.4 - 255.6) + (68.6 + 68.6) * (255.6 - 71.8) + (68.6 + 250.4) * (71.8 - 71.8)\right) * 0.5 * 0.00694 + -\left((233.4 + 119.5) * (110.1 - 110.1) + (119.5 + 119.5) * (110.1 - 188.6) + (119.5 + 233.4) * (188.6 - 188.6) + (233.4 + 233.4) * (188.6 - 110.1)\right) * 0.5 * 0.00694$

# 612 Sea Ct, Harbor Pointe, Dunedin, Pinellas County, Florida, United States, 34698

Gross Living Area: 2146 sq. ft



Space	Area (sq. ft)	Calculation <small>Coordinate Polygon Area Algorithm using inches</small>
FLOOR 2 (Living area)	1050	$-\left((186.2 + 186.2) * (95.6 - 142.3) + (186.2 + 353.2) * (142.3 - 142.3) + (353.2 + 353.2) * (142.3 - 669.8) + (353.2 + 131.8) * (669.8 - 669.8) + (131.8 + 131.8) * (669.8 - 591.5) + (131.8 + 67.6) * (591.5 - 591.5) + (67.6 + 67.6) * (591.5 - 95.6) + (67.6 + 186.2) * (95.6 - 95.6)\right) * 0.5 * 0.00694$
BALCONY (Non-living area)	79	$-\left((349.2 + 349.2) * (72.7 - 142.3) + (349.2 + 186.2) * (142.3 - 142.3) + (186.2 + 186.2) * (142.3 - 72.7) + (186.2 + 349.2) * (72.7 - 72.7)\right) * 0.5 * 0.00694$

