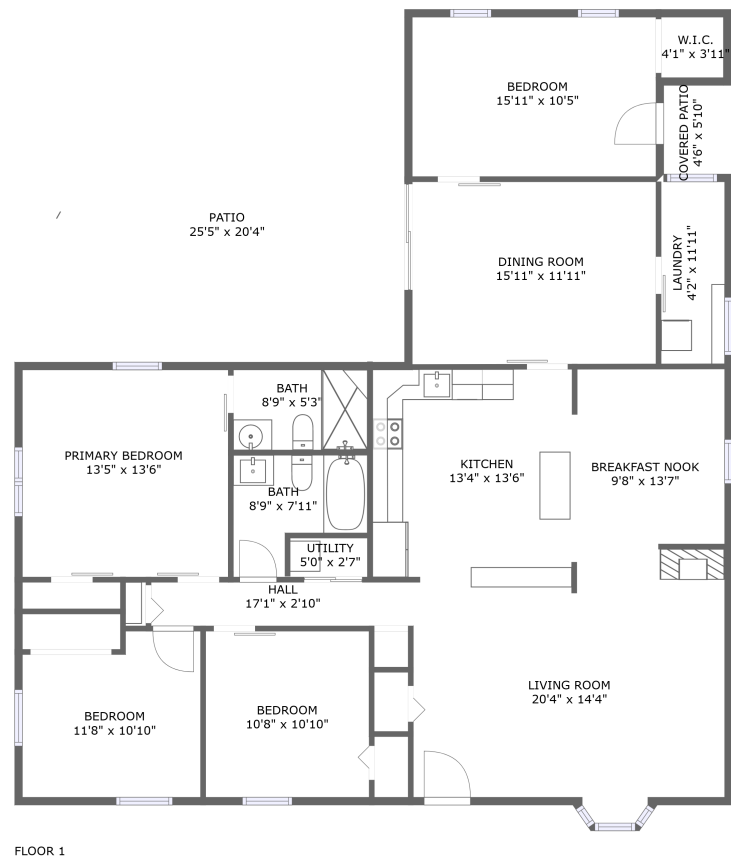




Home report


807 N Amelia St, Sterling, VA, US





Property summary


 **0** Garages


 **4** Bedrooms

 **2** Bathrooms

 **0** Half baths

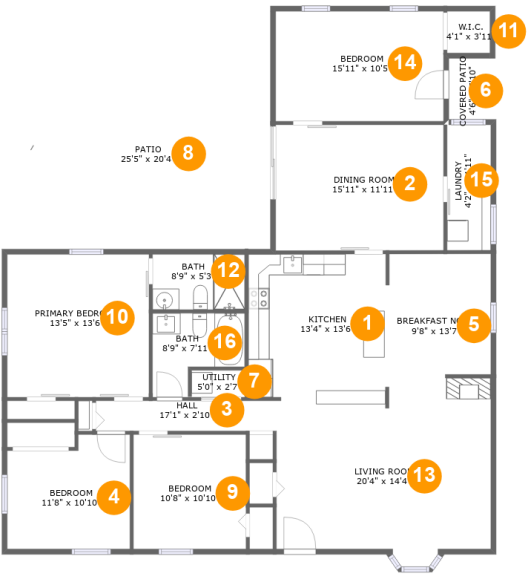
 **1** Floors

 **1,808** Gross living area sqft

 **2,305** Total sqft

Home report

807 N Amelia St, Sterling, VA, US



Room dimensions

Floor 1 Total sqft: 2305 Living area: 1808

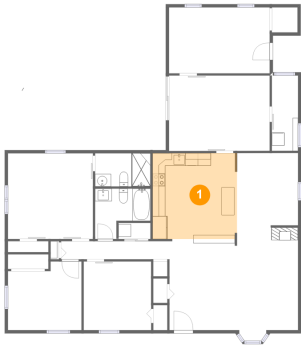
#		Dimensions	sqft	Counted as living area
1	Kitchen	13'4" x 13'6"	180 sq. ft	Yes
2	Dining Room	15'11" x 11'11"	190 sq. ft	Yes
3	Hall	17'1" x 2'10"	49 sq. ft	Yes
4	Bedroom	11'8" x 10'10"	116 sq. ft	Yes
5	Breakfast Nook	9'8" x 13'7"	122 sq. ft	Yes
6	Covered Patio	4'6" x 5'10"	26 sq. ft	No
7	Utility	5'0" x 2'7"	13 sq. ft	No
8	Patio	25'5" x 20'4"	452 sq. ft	No
9	Bedroom	10'8" x 10'10"	116 sq. ft	Yes
10	Primary Bedroom	13'5" x 13'6"	182 sq. ft	Yes
11	W.I.C.	4'1" x 3'11"	16 sq. ft	Yes

Home report

807 N Amelia St, Sterling, VA, US

#		Dimensions	sqft	Counted as living area
12	Bath	8'9" x 5'3"	46 sq. ft	Yes
13	Living Room	20'4" x 14'4"	300 sq. ft	Yes
14	Bedroom	15'11" x 10'5"	166 sq. ft	Yes
15	Laundry	4'2" x 11'11"	49 sq. ft	Yes
16	Bath	8'9" x 7'11"	54 sq. ft	Yes

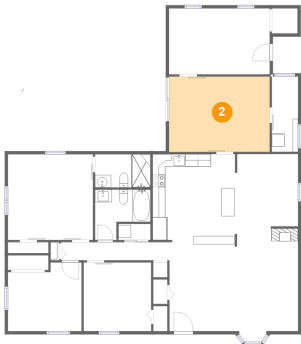
1 Floor 1 - Kitchen



Dimensions: 13'4" x 13'6"  
Area: 180 sq. ft  
Counted as living area: Yes

Heated: Yes  
Finished: Yes  
Enclosed: Yes  
Contiguous: Yes  
Permitted: Yes  
Wet space: No  
Addition: No  
Conversion: No

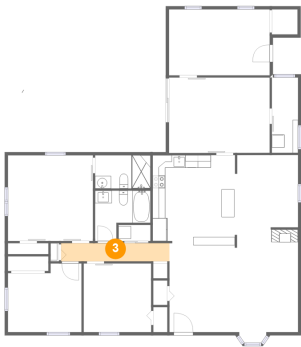
2 Floor 1 - Dining Room



Dimensions: 15'11" x 11'11"  
Area: 190 sq. ft  
Counted as living area: Yes

Heated: Yes  
Finished: Yes  
Enclosed: Yes  
Contiguous: Yes  
Permitted: Yes  
Wet space: No  
Addition: No  
Conversion: No

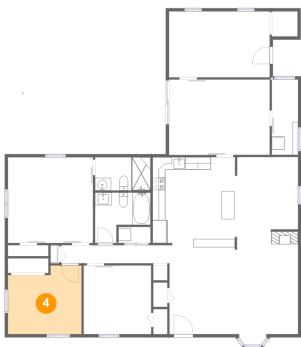
3 Floor 1 - Hall



Dimensions: 17'1" x 2'10"  
Area: 49 sq. ft  
Counted as living area: Yes

Heated: Yes  
Finished: Yes  
Enclosed: Yes  
Contiguous: Yes  
Permitted: Yes  
Wet space: No  
Addition: No  
Conversion: No

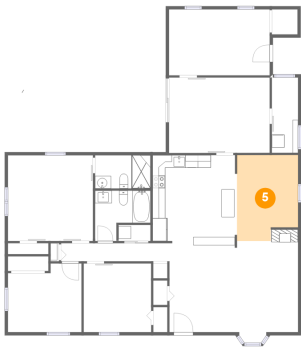
4 Floor 1 - Bedroom



Dimensions: 11'8" x 10'10"  
Area: 116 sq. ft  
Counted as living area: Yes

Heated: Yes  
Finished: Yes  
Enclosed: Yes  
Contiguous: Yes  
Permitted: Yes  
Wet space: No  
Addition: No  
Conversion: No

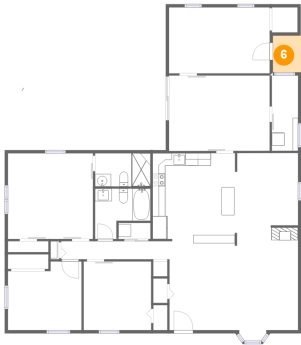
5 Floor 1 - Breakfast Nook



Dimensions: 9'8" x 13'7"  
Area: 122 sq. ft  
Counted as living area: Yes

Heated: Yes  
Finished: Yes  
Enclosed: Yes  
Contiguous: Yes  
Permitted: Yes  
Wet space: No  
Addition: No  
Conversion: No

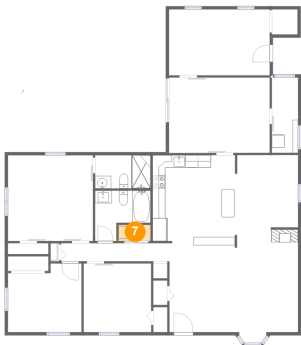
6 Floor 1 - Covered Patio



Dimensions: 4'6" x 5'10"  
Area: 26 sq. ft  
Counted as living area: No

Heated: No  
Finished: Yes  
Enclosed: No  
Contiguous: Yes  
Permitted: Yes  
Wet space: No  
Addition: No  
Conversion: No

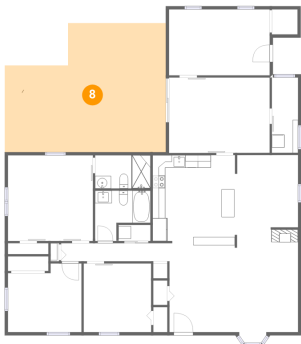
7 Floor 1 - Utility



Dimensions: 5'0" x 2'7"  
Area: 13 sq. ft  
Counted as living area: No

Heated: Yes  
Finished: No  
Enclosed: Yes  
Contiguous: Yes  
Permitted: Yes  
Wet space: No  
Addition: No  
Conversion: No

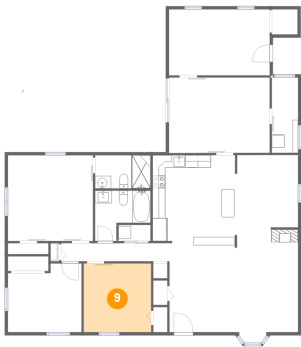
8 Floor 1 - Patio



Dimensions: 25'5" x 20'4"  
Area: 452 sq. ft  
Counted as living area: No

Heated: No  
Finished: Yes  
Enclosed: No  
Contiguous: Yes  
Permitted: Yes  
Wet space: No  
Addition: No  
Conversion: No

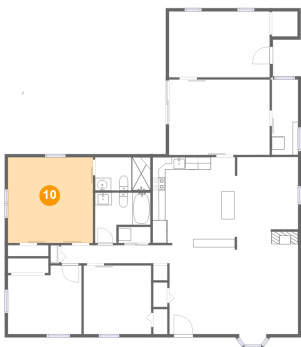
9 Floor 1 - Bedroom



Dimensions: 10'8" x 10'10"  
Area: 116 sq. ft  
Counted as living area: Yes

Heated: Yes  
Finished: Yes  
Enclosed: Yes  
Contiguous: Yes  
Permitted: Yes  
Wet space: No  
Addition: No  
Conversion: No

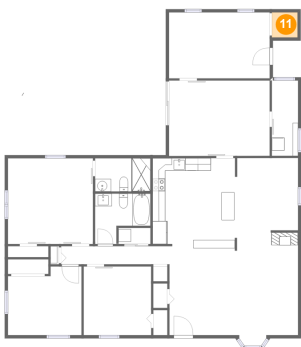
10 Floor 1 - Primary Bedroom



Dimensions: 13'5" x 13'6"  
Area: 182 sq. ft  
Counted as living area: Yes

Heated: Yes  
Finished: Yes  
Enclosed: Yes  
Contiguous: Yes  
Permitted: Yes  
Wet space: No  
Addition: No  
Conversion: No

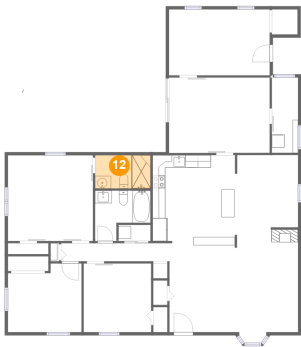
11 Floor 1 - W.I.C.



Dimensions: 4'1" x 3'11"  
Area: 16 sq. ft  
Counted as living area: Yes

Heated: Yes  
Finished: Yes  
Enclosed: Yes  
Contiguous: Yes  
Permitted: Yes  
Wet space: No  
Addition: No  
Conversion: No

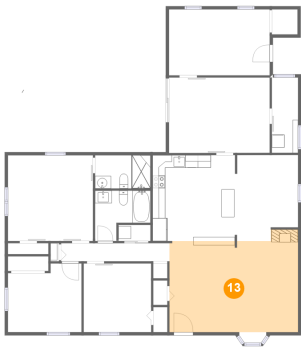
12 Floor 1 - Bath



Dimensions: 8'9" x 5'3"  
Area: 46 sq. ft  
Counted as living area: Yes

Heated: Yes  
Finished: Yes  
Enclosed: Yes  
Contiguous: Yes  
Permitted: Yes  
Wet space: Yes  
Addition: No  
Conversion: No

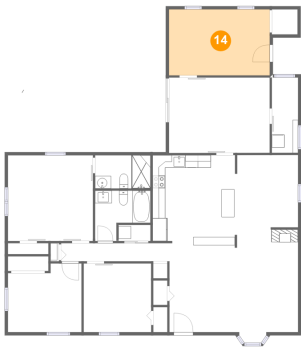
13 Floor 1 - Living Room



Dimensions: 20'4" x 14'4"  
Area: 300 sq. ft  
Counted as living area: Yes

Heated: Yes  
Finished: Yes  
Enclosed: Yes  
Contiguous: Yes  
Permitted: Yes  
Wet space: No  
Addition: No  
Conversion: No

14 Floor 1 - Bedroom

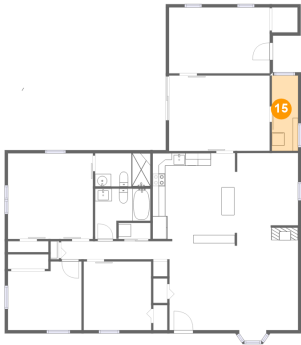


Dimensions: 15'11" x 10'5"  
Area: 166 sq. ft  
Counted as living area: Yes

Heated: Yes  
Finished: Yes  
Enclosed: Yes  
Contiguous: Yes  
Permitted: Yes  
Wet space: No  
Addition: No  
Conversion: No



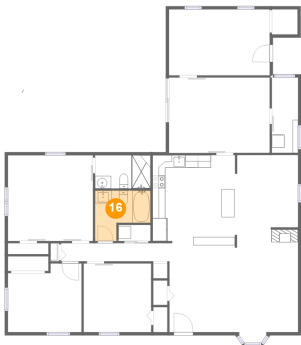
15 Floor 1 - Laundry



Dimensions: 4'2" x 11'11"  
Area: 49 sq. ft  
Counted as living area: Yes

Heated: Yes  
Finished: Yes  
Enclosed: Yes  
Contiguous: Yes  
Permitted: Yes  
Wet space: No  
Addition: No  
Conversion: No

16 Floor 1 - Bath



Dimensions: 8'9" x 7'11"  
Area: 54 sq. ft  
Counted as living area: Yes

Heated: Yes  
Finished: Yes  
Enclosed: Yes  
Contiguous: Yes  
Permitted: Yes  
Wet space: Yes  
Addition: No  
Conversion: No