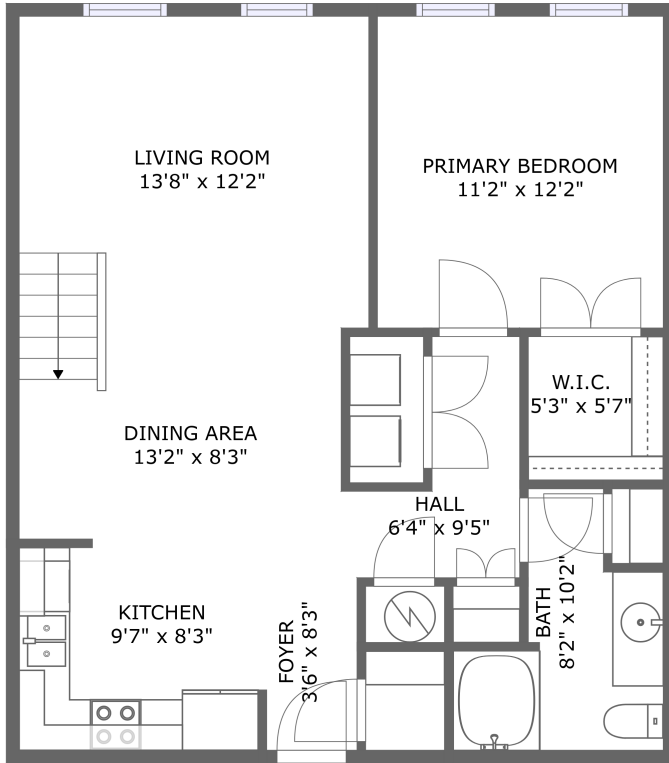
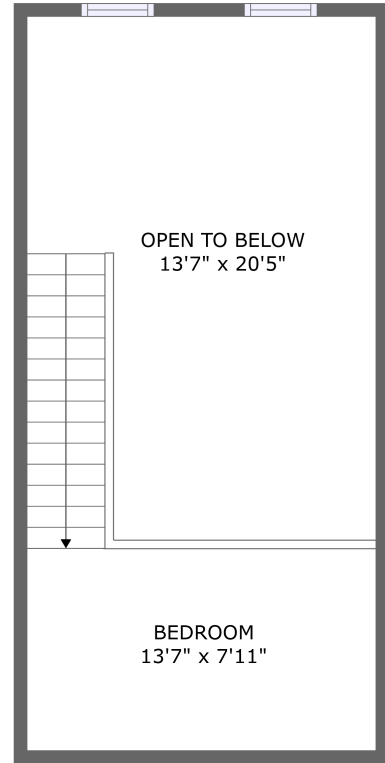


4221 West Spruce Street, Carver City, Tampa, Hillsborough County, Florida, United States,



FLOOR 1




FLOOR 2

Property Summary


 **0** garages

 **2** bedrooms

 **1** bathrooms

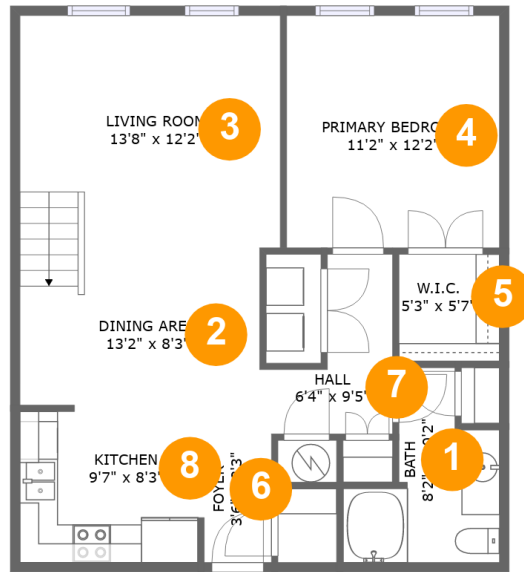
 **0** half baths

 **2** floors

 **721** Gross Living Area sqft

 **1,111** total sqft

4221 West Spruce Street, Carver City, Tampa, Hillsborough County, Florida, United States,



Room Dimensions

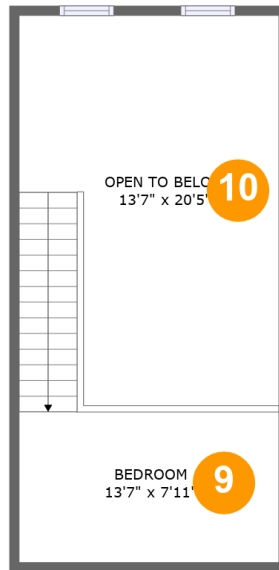
Floor 1

Total sqft: 721

Living area: 721

#	Room name	Dimensions	Area (sqft)	Counted as Living Area
1	Bath	8'2" x 10'2"	57 sq. ft	Yes
2	Dining Area	13'2" x 8'3"	105 sq. ft	Yes
3	Living Room	13'8" x 12'2"	166 sq. ft	Yes
4	Primary Bedroom	11'2" x 12'2"	136 sq. ft	Yes
5	W.i.c.	5'3" x 5'7"	30 sq. ft	Yes
6	Foyer	3'6" x 8'3"	29 sq. ft	Yes
7	Hall	6'4" x 9'5"	42 sq. ft	Yes
8	Kitchen	9'7" x 8'3"	78 sq. ft	Yes

**4221 West Spruce Street, Carver City, Tampa,
Hillsborough County, Florida, United States,**



Room Dimensions

Floor 2

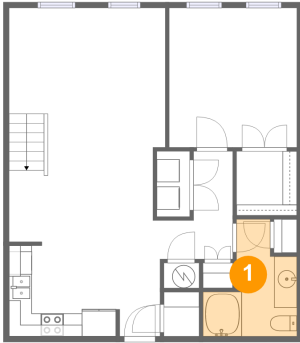
Total sqft: 390

Living area: 0

#	Room name	Dimensions	Area (sqft)	Counted as Living Area
9	Bedroom	13'7" x 7'11"	150 sq. ft	No
10	Open To Below	13'7" x 20'5"	240 sq. ft	No

4221 West Spruce Street, Carver City, Tampa, Hillsborough County, Florida, United States,

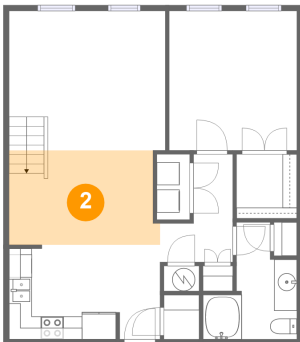
1 Floor 1 - Bath



Dimensions: 8'2" x 10'2"
Area: 57 sq. ft
Counted as Living Area:
Yes

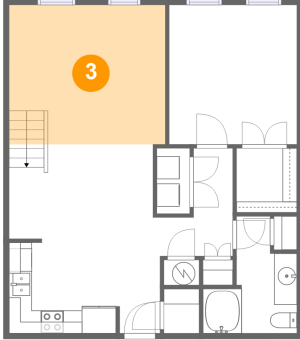
Heated: Yes
Finished: Yes
Enclosed: Yes
Contiguous:
Yes
Permitted: Yes
Wet Space: Yes
Addition: No
Conversion: No

2 Floor 1 - Dining Area



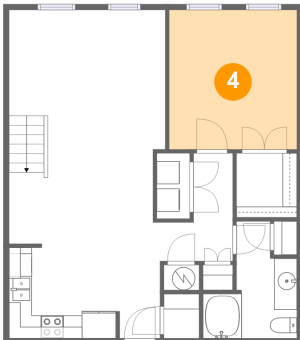
Dimensions: 13'2" x 8'3"
Area: 105 sq. ft
Counted as Living Area:
Yes

Heated: Yes
Finished: Yes
Enclosed: Yes
Contiguous:
Yes
Permitted: Yes
Wet Space: No
Addition: No
Conversion: No

**4221 West Spruce Street, Carver City, Tampa,
Hillsborough County, Florida, United States,****3 Floor 1 - Living Room**

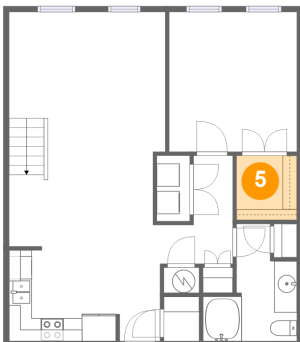
Dimensions: 13'8" x 12'2"
Area: 166 sq. ft
Counted as Living Area:
Yes

Heated: Yes
Finished: Yes
Enclosed: Yes
Contiguous:
Yes
Permitted: Yes
Wet Space: No
Addition: No
Conversion: No

4 Floor 1 - Primary Bedroom

Dimensions: 11'2" x 12'2"
Area: 136 sq. ft
Counted as Living Area:
Yes

Heated: Yes
Finished: Yes
Enclosed: Yes
Contiguous:
Yes
Permitted: Yes
Wet Space: No
Addition: No
Conversion: No

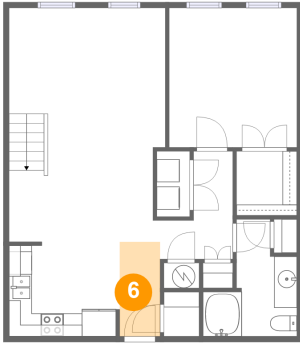
5 Floor 1 - W.i.c.

Dimensions: 5'3" x 5'7"
Area: 30 sq. ft
Counted as Living Area:
Yes

Heated: Yes
Finished: Yes
Enclosed: Yes
Contiguous:
Yes
Permitted: Yes
Wet Space: No
Addition: No
Conversion: No

4221 West Spruce Street, Carver City, Tampa, Hillsborough County, Florida, United States,

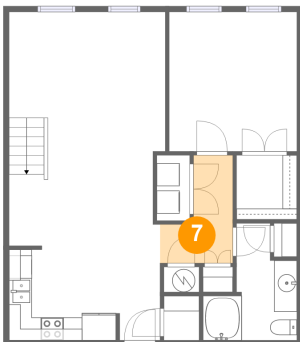
6 Floor 1 - Foyer



Dimensions: 3'6" x 8'3"
Area: 29 sq. ft
Counted as Living Area:
Yes

Heated: Yes
Finished: Yes
Enclosed: Yes
Contiguous:
Yes
Permitted: Yes
Wet Space: No
Addition: No
Conversion: No

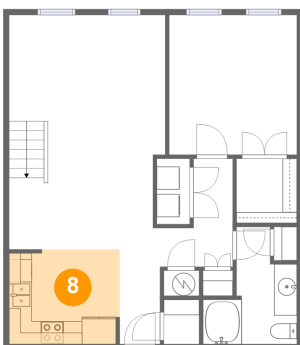
7 Floor 1 - Hall



Dimensions: 6'4" x 9'5"
Area: 42 sq. ft
Counted as Living Area:
Yes

Heated: Yes
Finished: Yes
Enclosed: Yes
Contiguous:
Yes
Permitted: Yes
Wet Space: No
Addition: No
Conversion: No

8 Floor 1 - Kitchen

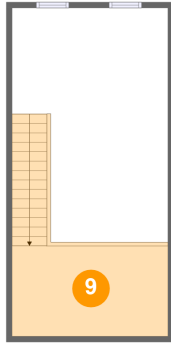


Dimensions: 9'7" x 8'3"
Area: 78 sq. ft
Counted as Living Area:
Yes

Heated: Yes
Finished: Yes
Enclosed: Yes
Contiguous:
Yes
Permitted: Yes
Wet Space: No
Addition: No
Conversion: No

4221 West Spruce Street, Carver City, Tampa, Hillsborough County, Florida, United States,

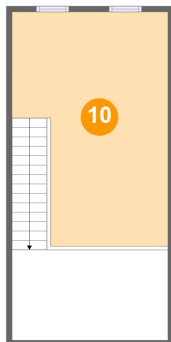
9 Floor 2 - Bedroom



Dimensions: 13'7" x 7'11"
Area: 150 sq. ft
Counted as Living Area: No

Heated: Yes
Finished: Yes
Enclosed: Yes
Contiguous: No
Permitted: Yes
Wet Space: No
Addition: No
Conversion: No

10 Floor 2 - Open To Below



Dimensions: 13'7" x 20'5"
Area: 240 sq. ft
Counted as Living Area: No

Heated: No
Finished: No
Enclosed: No
Contiguous: Yes
Permitted: No
Wet Space: No
Addition: No
Conversion: No