

Home report

112 Mockingbird Hill Road, Moneta, Bedford County, Virginia,
United States, 24121




Total Area: 2222 sq. ft

Floor 1: 418 sq. ft, Floor 2: 1318 sq. ft, Floor 3: 486 sq. ft

Excluded: Patio 374 sq. ft, Deck 244 sq. ft, Carport 366 sq. ft, Wine cellar 34 sq. ft, Garage 176 sq. ft, Screened porch 397 sq. ft, Porch 48 sq. ft, Low ceiling 170 sq. ft, Attic 305 sq. ft, Walls: 275 sq. ft

Property summary

 3 Floors

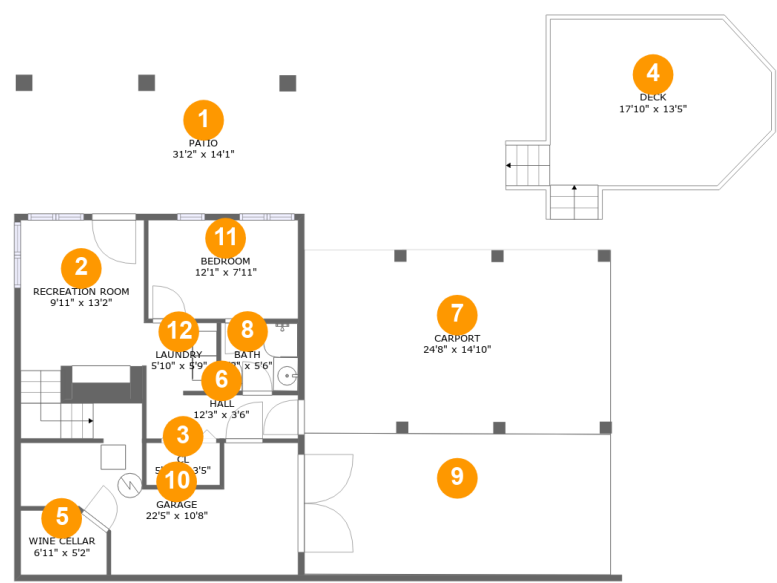
 6 Bedrooms

 4 Bathrooms

 1 Garages

Home report

112 Mockingbird Hill Road, Moneta, Bedford County, Virginia,
United States, 24121



Room dimensions

Floor 1 Total:418sqft Excluded: 1194sqft

#		Max Dimensions	sqft	Included
1	Patio	31'2" x 14'1"	374 sq. ft	No
2	Recreation Room	9'11" x 13'2"	173 sq. ft	Yes
3	Cl	5'11" x 3'5"	20 sq. ft	Yes
4	Deck	17'10" x 13'5"	244 sq. ft	No
5	Wine Cellar	6'11" x 5'2"	34 sq. ft	No
6	Hall	12'3" x 3'6"	43 sq. ft	Yes
7	Carport	24'8" x 14'10"	366 sq. ft	No
8	Bath	6'3" x 5'6"	34 sq. ft	Yes
9	Driveway	24'8" x 11'4"	280 sq. ft	No
10	Garage	22'5" x 10'8"	176 sq. ft	No
11	Bedroom	12'1" x 7'11"	96 sq. ft	Yes

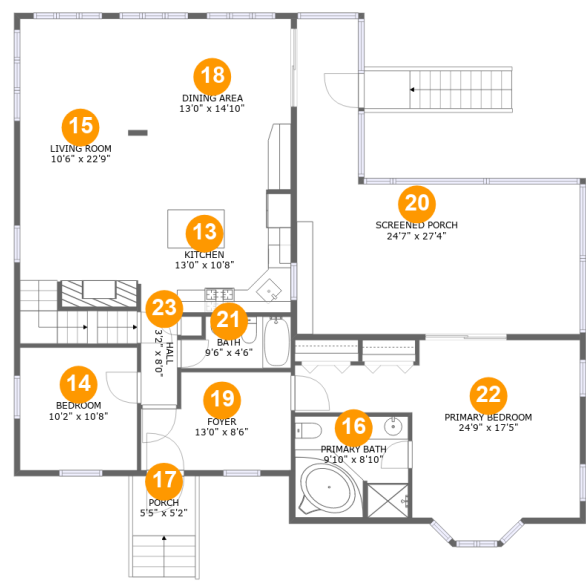
Home report

112 Mockingbird Hill Road, Moneta, Bedford County, Virginia,
United States, 24121

#		Max Dimensions	sqft	Included
12	Laundry	5'10" x 5'9"	33 sq. ft	Yes

Home report

112 Mockingbird Hill Road, Moneta, Bedford County, Virginia,
United States, 24121



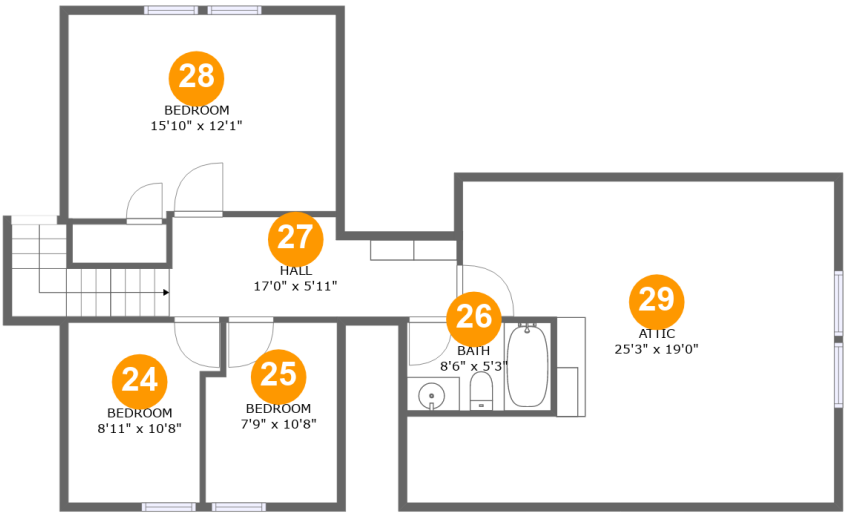
Room dimensions

Floor 2 Total:1318sqft Excluded: 445sqft

#		Max Dimensions	sqft	Included
13	Kitchen	13'0" x 10'8"	138 sq. ft	Yes
14	Bedroom	10'2" x 10'8"	108 sq. ft	Yes
15	Living Room	10'6" x 22'9"	291 sq. ft	Yes
16	Primary Bath	9'10" x 8'10"	85 sq. ft	Yes
17	Porch	5'5" x 5'2"	48 sq. ft	No
18	Dining Area	13'0" x 14'10"	193 sq. ft	Yes
19	Foyer	13'0" x 8'6"	100 sq. ft	Yes
20	Screened Porch	24'7" x 27'4"	397 sq. ft	No
21	Bath	9'6" x 4'6"	39 sq. ft	Yes
22	Primary Bedroom	24'9" x 17'5"	277 sq. ft	Yes
23	Hall	3'2" x 8'0"	25 sq. ft	Yes

Home report

112 Mockingbird Hill Road, Moneta, Bedford County, Virginia,
United States, 24121



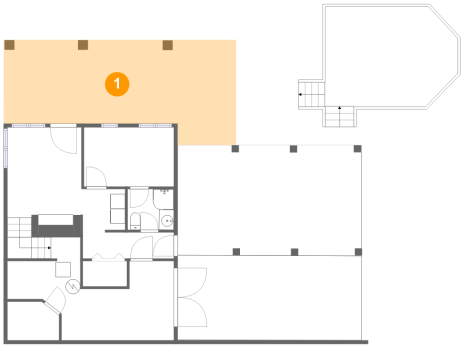
Room dimensions

Floor 3 Total:486sqft Excluded: 475sqft

#		Max Dimensions	sqft	Included
24	Bedroom	8'11" x 10'8"	72 sq. ft	Yes
25	Bedroom	7'9" x 10'8"	59 sq. ft	Yes
26	Bath	8'6" x 5'3"	44 sq. ft	Yes
27	Hall	17'0" x 5'11"	123 sq. ft	Yes
28	Bedroom	15'10" x 12'1"	151 sq. ft	Yes
29	Attic	25'3" x 19'0"	305 sq. ft	No

112 Mockingbird Hill Road, Moneta, Bedford County, Virginia,
United States, 24121

1 Floor 1 - Patio



Max Dimensions: 31'2" x 14'1"
Calculated Area: 374 sq. ft
Included: No

Heated: No
Finished: Yes
Enclosed: No
Contiguous: Yes
Permitted: Yes
Wet space: No
Addition: No
Conversion: No

2 Floor 1 - Recreation Room

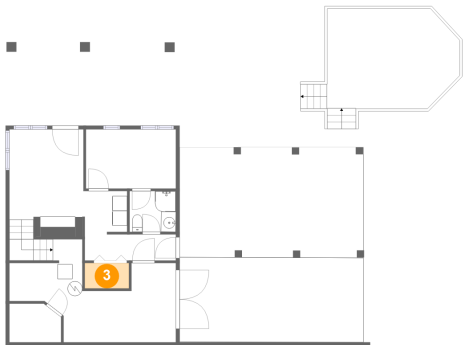


Max Dimensions: 9'11" x 13'2"
Calculated Area: 173 sq. ft
Included: Yes

Heated: Yes
Finished: Yes
Enclosed: Yes
Contiguous: Yes
Permitted: Yes
Wet space: No
Addition: No
Conversion: No

112 Mockingbird Hill Road, Moneta, Bedford County, Virginia,
United States, 24121

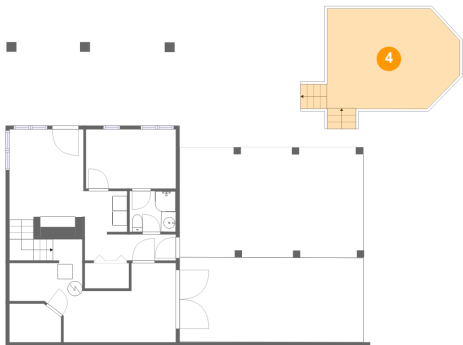
3 Floor 1 - Cl



Max Dimensions: 5'11" x 3'5"
Calculated Area: 20 sq. ft
Included: Yes

Heated: Yes
Finished: Yes
Enclosed: Yes
Contiguous: Yes
Permitted: Yes
Wet space: No
Addition: No
Conversion: No

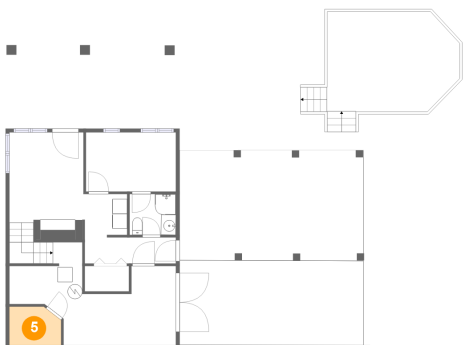
4 Floor 1 - Deck



Max Dimensions: 17'10" x 13'5"
Calculated Area: 244 sq. ft
Included: No

Heated: No
Finished: Yes
Enclosed: No
Contiguous: Yes
Permitted: Yes
Wet space: No
Addition: No
Conversion: No

5 Floor 1 - Wine Cellar

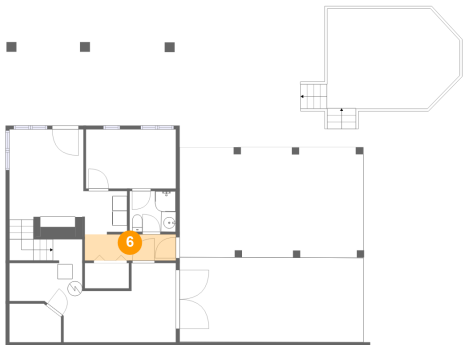


Max Dimensions: 6'11" x 5'2"
Calculated Area: 34 sq. ft
Included: No

Heated: No
Finished: No
Enclosed: Yes
Contiguous: Yes
Permitted: Yes
Wet space: No
Addition: No
Conversion: No

112 Mockingbird Hill Road, Moneta, Bedford County, Virginia,
United States, 24121

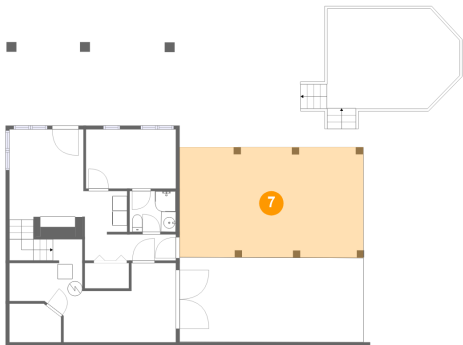
6 Floor 1 - Hall



Max Dimensions: 12'3" x 3'6"
Calculated Area: 43 sq. ft
Included: Yes

Heated: Yes
Finished: Yes
Enclosed: Yes
Contiguous: Yes
Permitted: Yes
Wet space: No
Addition: No
Conversion: No

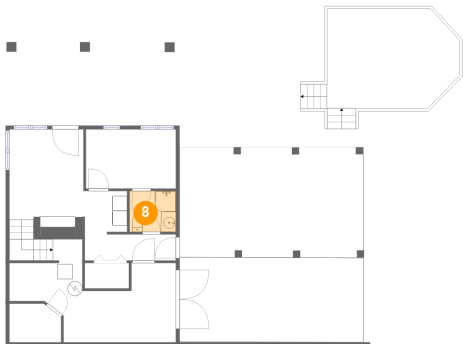
7 Floor 1 - Carport



Max Dimensions: 24'8" x 14'10"
Calculated Area: 366 sq. ft
Included: No

Heated: No
Finished: Yes
Enclosed: No
Contiguous: No
Permitted: Yes
Wet space: No
Addition: No
Conversion: No

8 Floor 1 - Bath

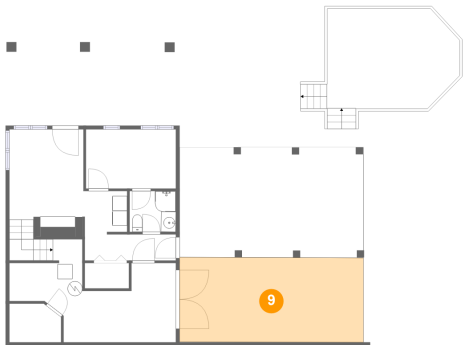


Max Dimensions: 6'3" x 5'6"
Calculated Area: 34 sq. ft
Included: Yes

Heated: Yes
Finished: Yes
Enclosed: Yes
Contiguous: Yes
Permitted: Yes
Wet space: Yes
Addition: No
Conversion: No

112 Mockingbird Hill Road, Moneta, Bedford County, Virginia,
United States, 24121

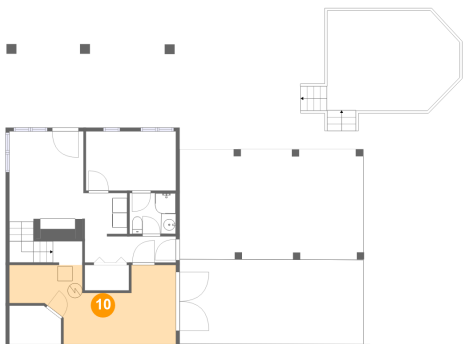
9 Floor 1 - Driveway



Max Dimensions: 24'8" x 11'4"
Calculated Area: 280 sq. ft
Included: No

Heated: No
Finished: No
Enclosed: No
Contiguous: Yes
Permitted: No
Wet space: No
Addition: No
Conversion: No

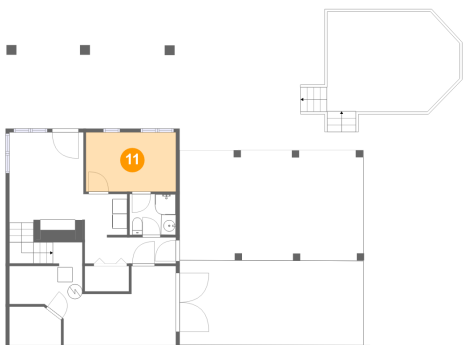
10 Floor 1 - Garage



Max Dimensions: 22'5" x 10'8"
Calculated Area: 176 sq. ft
Included: No

Heated: No
Finished: No
Enclosed: Yes
Contiguous: Yes
Permitted: Yes
Wet space: No
Addition: No
Conversion: No

11 Floor 1 - Bedroom



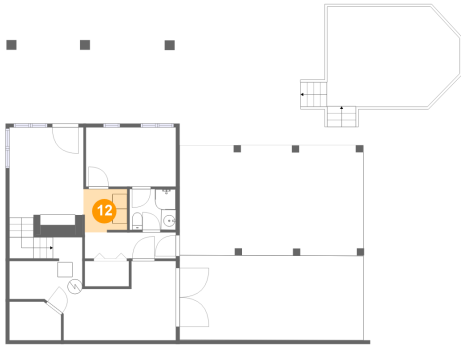
Max Dimensions: 12'1" x 7'11"
Calculated Area: 96 sq. ft
Included: Yes

Heated: Yes
Finished: Yes
Enclosed: Yes
Contiguous: Yes
Permitted: Yes
Wet space: No
Addition: No
Conversion: No

Home report

112 Mockingbird Hill Road, Moneta, Bedford County, Virginia,
United States, 24121

12 Floor 1 - Laundry



Max Dimensions: 5'10" x 5'9"
Calculated Area: 33 sq. ft
Included: Yes

Heated: Yes
Finished: Yes
Enclosed: Yes
Contiguous: Yes
Permitted: Yes
Wet space: No
Addition: No
Conversion: No

13 Floor 2 - Kitchen



Max Dimensions: 13'0" x 10'8"
Calculated Area: 138 sq. ft
Included: Yes

Heated: Yes
Finished: Yes
Enclosed: Yes
Contiguous: Yes
Permitted: Yes
Wet space: No
Addition: No
Conversion: No

14 Floor 2 - Bedroom



Max Dimensions: 10'2" x 10'8"
Calculated Area: 108 sq. ft
Included: Yes

Heated: Yes
Finished: Yes
Enclosed: Yes
Contiguous: Yes
Permitted: Yes
Wet space: No
Addition: No
Conversion: No

112 Mockingbird Hill Road, Moneta, Bedford County, Virginia,
United States, 24121

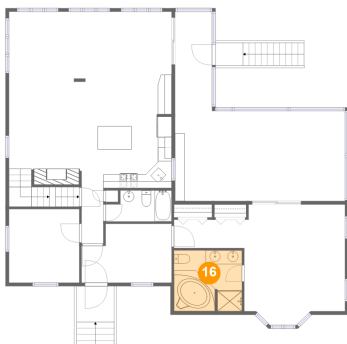
15 Floor 2 - Living Room



Max Dimensions: 10'6" x 22'9"
Calculated Area: 291 sq. ft
Included: Yes

Heated: Yes
Finished: Yes
Enclosed: Yes
Contiguous: Yes
Permitted: Yes
Wet space: No
Addition: No
Conversion: No

16 Floor 2 - Primary Bath



Max Dimensions: 9'10" x 8'10"
Calculated Area: 85 sq. ft
Included: Yes

Heated: Yes
Finished: Yes
Enclosed: Yes
Contiguous: Yes
Permitted: Yes
Wet space: Yes
Addition: No
Conversion: No

17 Floor 2 - Porch



Max Dimensions: 5'5" x 5'2"
Calculated Area: 48 sq. ft
Included: No

Heated: No
Finished: Yes
Enclosed: No
Contiguous: Yes
Permitted: Yes
Wet space: No
Addition: No
Conversion: No

112 Mockingbird Hill Road, Moneta, Bedford County, Virginia,
United States, 24121

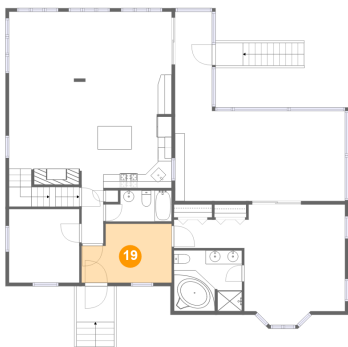
18 Floor 2 - Dining Area



Max Dimensions: 13'0" x 14'10"
Calculated Area: 193 sq. ft
Included: Yes

Heated: Yes
Finished: Yes
Enclosed: Yes
Contiguous: Yes
Permitted: Yes
Wet space: No
Addition: No
Conversion: No

19 Floor 2 - Foyer



Max Dimensions: 13'0" x 8'6"
Calculated Area: 100 sq. ft
Included: Yes

Heated: Yes
Finished: Yes
Enclosed: Yes
Contiguous: Yes
Permitted: Yes
Wet space: No
Addition: No
Conversion: No

20 Floor 2 - Screened Porch



Max Dimensions: 24'7" x 27'4"
Calculated Area: 397 sq. ft
Included: No

Heated: No
Finished: Yes
Enclosed: No
Contiguous: Yes
Permitted: Yes
Wet space: No
Addition: No
Conversion: No

112 Mockingbird Hill Road, Moneta, Bedford County, Virginia,
United States, 24121

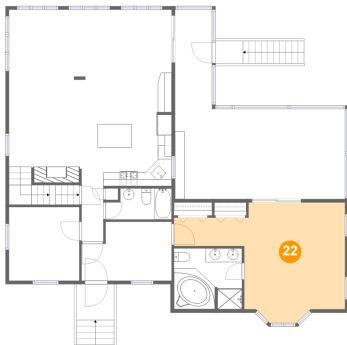
21 Floor 2 - Bath



Max Dimensions: 9'6" x 4'6"
Calculated Area: 39 sq. ft
Included: Yes

Heated: Yes
Finished: Yes
Enclosed: Yes
Contiguous: Yes
Permitted: Yes
Wet space: Yes
Addition: No
Conversion: No

22 Floor 2 - Primary Bedroom



Max Dimensions: 24'9" x 17'5"
Calculated Area: 277 sq. ft
Included: Yes

Heated: Yes
Finished: Yes
Enclosed: Yes
Contiguous: Yes
Permitted: Yes
Wet space: No
Addition: No
Conversion: No

23 Floor 2 - Hall



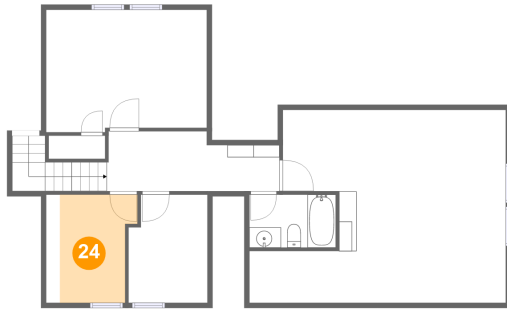
Max Dimensions: 3'2" x 8'0"
Calculated Area: 25 sq. ft
Included: Yes

Heated: Yes
Finished: Yes
Enclosed: Yes
Contiguous: Yes
Permitted: Yes
Wet space: No
Addition: No
Conversion: No

Home report

112 Mockingbird Hill Road, Moneta, Bedford County, Virginia,
United States, 24121

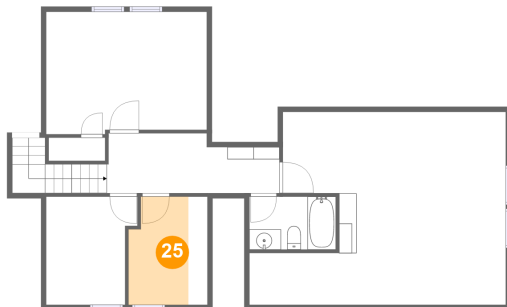
24 Floor 3 - Bedroom



Max Dimensions: 8'11" x 10'8"
Calculated Area: 72 sq. ft
Included: Yes

Heated: Yes
Finished: Yes
Enclosed: Yes
Contiguous: Yes
Permitted: Yes
Wet space: No
Addition: No
Conversion: No

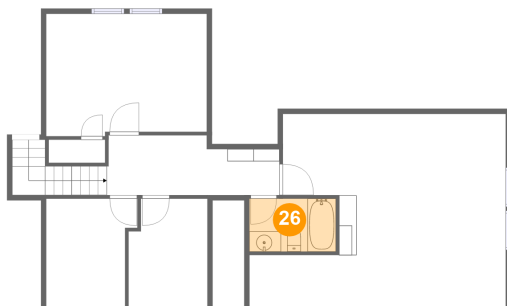
25 Floor 3 - Bedroom



Max Dimensions: 7'9" x 10'8"
Calculated Area: 59 sq. ft
Included: Yes

Heated: Yes
Finished: Yes
Enclosed: Yes
Contiguous: Yes
Permitted: Yes
Wet space: No
Addition: No
Conversion: No

26 Floor 3 - Bath

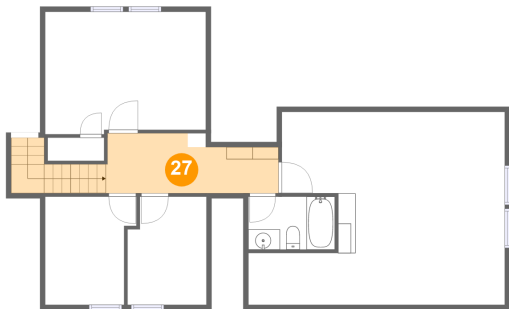


Max Dimensions: 8'6" x 5'3"
Calculated Area: 44 sq. ft
Included: Yes

Heated: Yes
Finished: Yes
Enclosed: Yes
Contiguous: Yes
Permitted: Yes
Wet space: Yes
Addition: No
Conversion: No

112 Mockingbird Hill Road, Moneta, Bedford County, Virginia,
United States, 24121

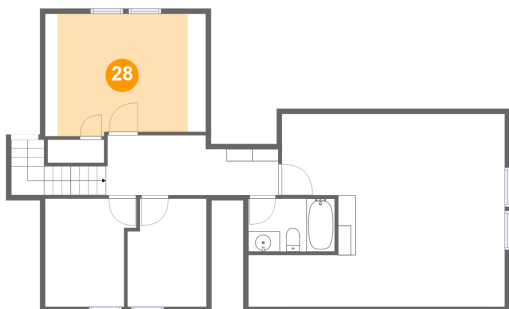
27 Floor 3 - Hall



Max Dimensions: 17'0" x 5'11"
Calculated Area: 123 sq. ft
Included: Yes

Heated: Yes
Finished: Yes
Enclosed: Yes
Contiguous: Yes
Permitted: Yes
Wet space: No
Addition: No
Conversion: No

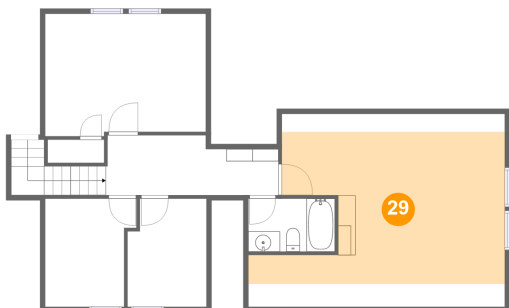
28 Floor 3 - Bedroom



Max Dimensions: 15'10" x 12'1"
Calculated Area: 151 sq. ft
Included: Yes

Heated: Yes
Finished: Yes
Enclosed: Yes
Contiguous: Yes
Permitted: Yes
Wet space: No
Addition: No
Conversion: No

29 Floor 3 - Attic



Max Dimensions: 25'3" x 19'0"
Calculated Area: 305 sq. ft
Included: No

Heated: No
Finished: No
Enclosed: Yes
Contiguous: Yes
Permitted: Yes
Wet space: No
Addition: No
Conversion: No