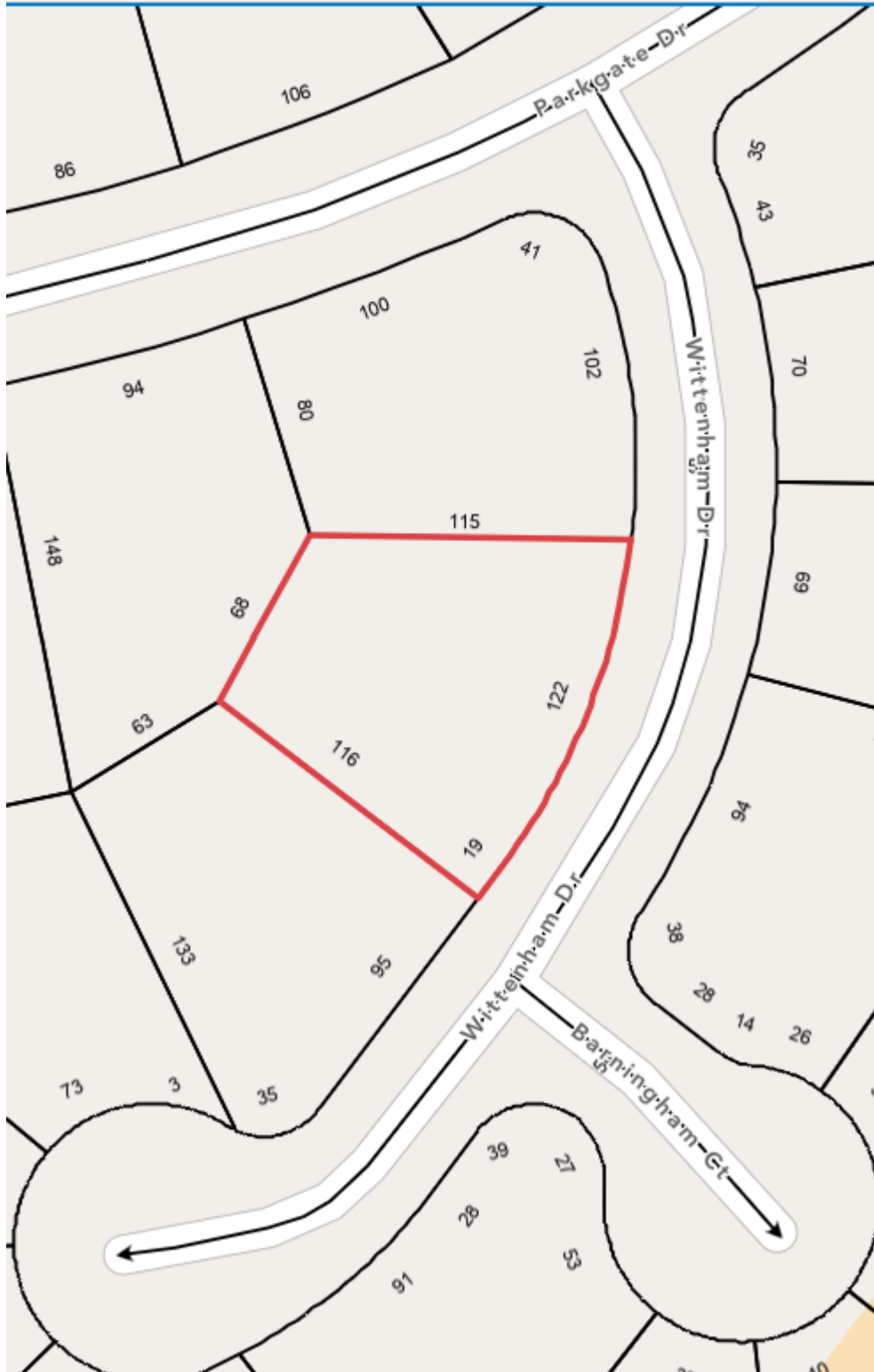


102 Wittenham “plat map” outlined in red

This is not a survey and provided for informational purposes only

“All gutter downspouts and the surface water drain at the back of property are attached to the underground pipes which drain directly to the front curb. All drainage was professionally designed and installed in 1998 with no additional modifications required.” On Seller’s Disclosure Pages



On a double Cul-de-sac streets