

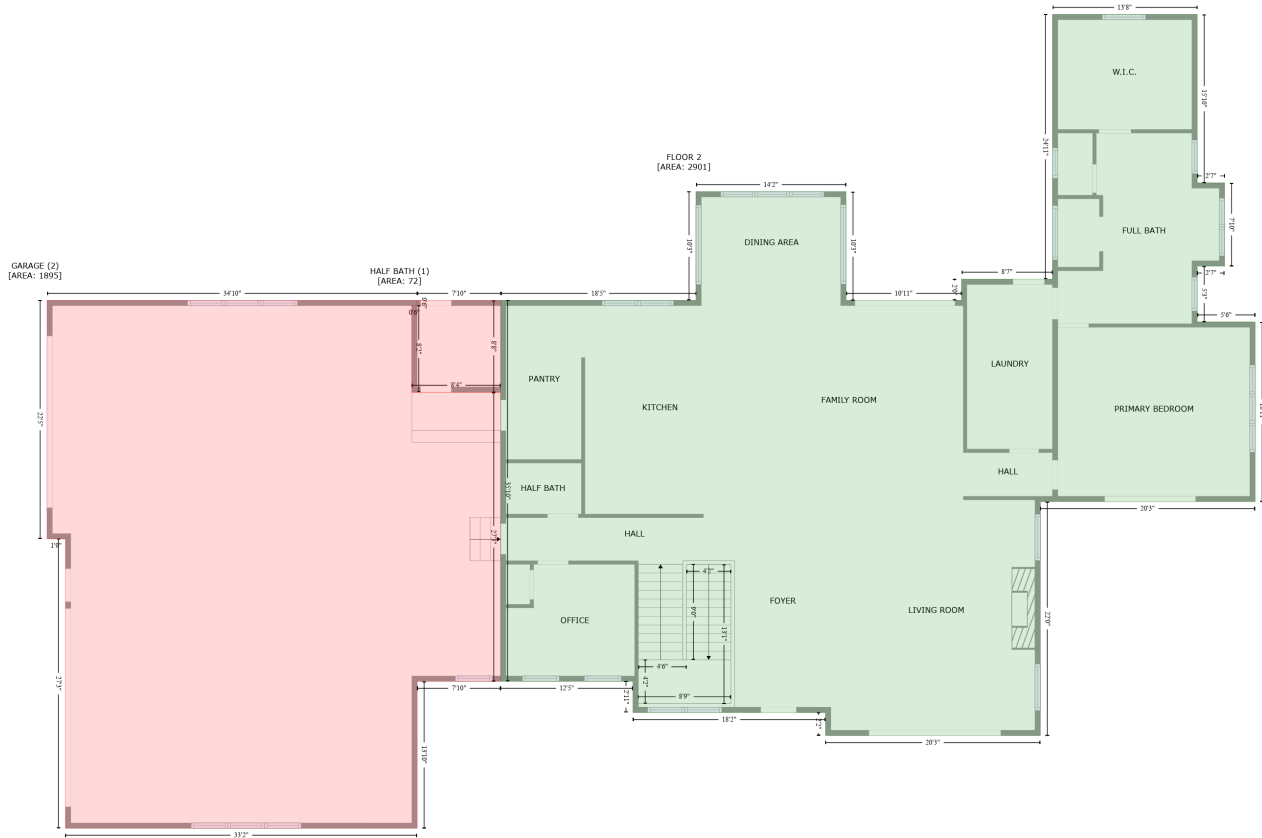
2835 E 2980 N, North Logan, UT, US

Gross Living Area: 2901 sq. ft

Space	Area (sq. ft)	Calculation <small>Coordinate Polygon Area Algorithm using inches</small>
		$\begin{aligned} & * (752 - 425.4) + (493.1 + 392.7) * (425.4 - 425.4) + (392.7 + 392.7) * (425.4 - 321.6) + (392.7 + \\ & 713.9) * (321.6 - 321.6) + (713.9 + 713.9) * (321.6 - 198.8) + (713.9 + 883.5) * (198.8 - 198.8) + \\ & (883.5 + 883.5) * (198.8 - 321.6) + (883.5 + 1014.1) * (321.6 - 321.6) + (1014.1 + 1014.1) * \\ & (321.6 - 297.7) + (1014.1 + 1116.8) * (297.7 - 297.7) + (1116.8 + 1116.8) * (297.7 - -1.4) + \\ & (1116.8 + 1280.5) * (-1.4 - -1.4) * 0.5 * 0.00694 \end{aligned}$
STORAGE (Non-living area)	173	$\begin{aligned} & -((860.3 + 860.3) * (781.2 - 807.3) + (860.3 + 866.3) * (807.3 - 813.3) + (866.3 + 866.3) * (813.3 - \\ & 897.3) + (866.3 + 642.6) * (897.3 - 897.3) + (642.6 + 642.6) * (897.3 - 787.2) + (642.6 + 795.5) * \\ & (787.2 - 787.2) + (795.5 + 795.5) * (787.2 - 781.2) + (795.5 + 860.3) * (781.2 - 781.2)) * 0.5 * \\ & 0.00694 \end{aligned}$
ELECTRICAL ROOM (Non-living area)	69	$\begin{aligned} & -((860.3 + 860.3) * (618.9 - 781.2) + (860.3 + 799.5) * (781.2 - 781.2) + (799.5 + 799.5) * (781.2 - \\ & 618.9) + (799.5 + 860.3) * (618.9 - 618.9)) * 0.5 * 0.00694 \end{aligned}$

2835 E 2980 N, North Logan, UT, US

Gross Living Area: 2901 sq. ft



Space	Area (sq. ft)	Calculation
FLOOR 2 (Living area)	2901	Coordinate Polygon Area Algorithm using inches $-((1280.5 + 1280.5) * (-1.4 - 188.9) + (1280.5 + 1311.4) * (188.9 - 188.9) + (1311.4 + 1311.4) * (188.9 - 283) + (1311.4 + 1280.5) * (283 - 283) + (1280.5 + 1280.5) * (283 - 346) + (1280.5 + 1346) * (346 - 346) + (1346 + 1346) * (346 - 549) + (1346 + 1103.1) * (549 - 549) + (1103.1 + 1103.1) * (549 - 813.3) + (1103.1 + 860.3) * (813.3 - 813.3) + (860.3 + 860.3) * (813.3 - 787.2) + (860.3 + 642.6) * (787.2 - 787.2) + (642.6 + 642.6) * (787.2 - 752) + (642.6 + 493.1) * (752 - 752) + (493.1 + 493.1) * (752 - 321.6) + (493.1 + 713.9) * (321.6 - 321.6) + (713.9 + 713.9) * (321.6 - 198.8) + (713.9 + 883.5) * (198.8 - 198.8) + (883.5 + 883.5) * (198.8 - 321.6) + (883.5 + 1014.1) * (321.6 - 321.6) + (1014.1 + 1014.1) * (321.6 - 297.7) + (1014.1 + 1116.8) * (297.7 - 297.7) + (1116.8 + 1116.8) * (297.7 - -1.4) + (1116.8 + 1280.5) * (-1.4 - -1.4)) * 0.5 * 0.00694$
HALF BATH (Non-living area)	72	$-((493.1 + 493.1) * (321.6 - 425.4) + (493.1 + 392.7) * (425.4 - 425.4) + (392.7 + 392.7) * (425.4 - 327.6) + (392.7 + 398.7) * (327.6 - 327.6) + (398.7 + 398.7) * (327.6 - 321.6) + (398.7 + 493.1) * (321.6 - 321.6)) * 0.5 * 0.00694$
GARAGE (Non-living area)	1895	$-((398.7 + 398.7) * (321.6 - 327.6) + (398.7 + 392.7) * (327.6 - 327.6) + (392.7 + 392.7) * (327.6 - 425.4) + (392.7 + 493.1) * (425.4 - 425.4) + (493.1 + 493.1) * (425.4 - 752) + (493.1 + 398.7) * (752 - 752) + (398.7 + 398.7) * (752 - 918) + (398.7 + 1.1) * (918 - 918) + (1.1 + 1.1) * (918 - 591.1) + (1.1 + -19.7) * (591.1 - 591.1) + (-19.7 + -19.7) * (591.1 - 321.6) + (-19.7 + 398.7) * (321.6 - 321.6)) * 0.5 * 0.00694$