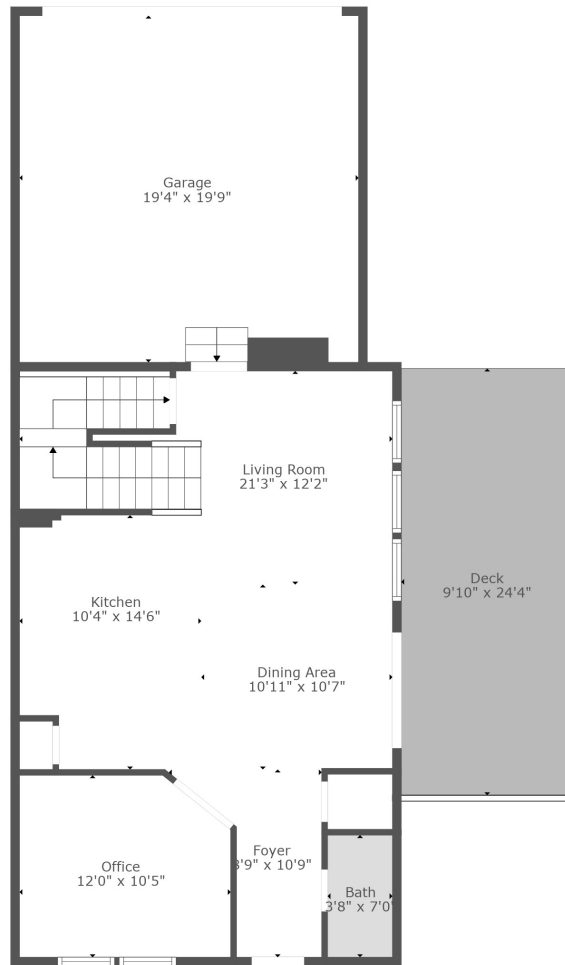
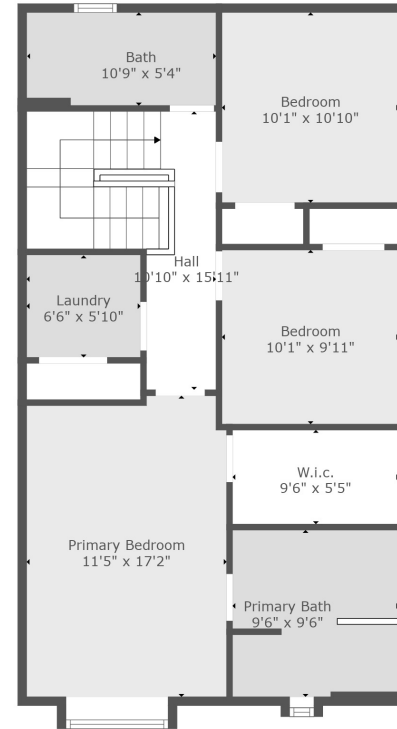


Floor 1



Floor 2

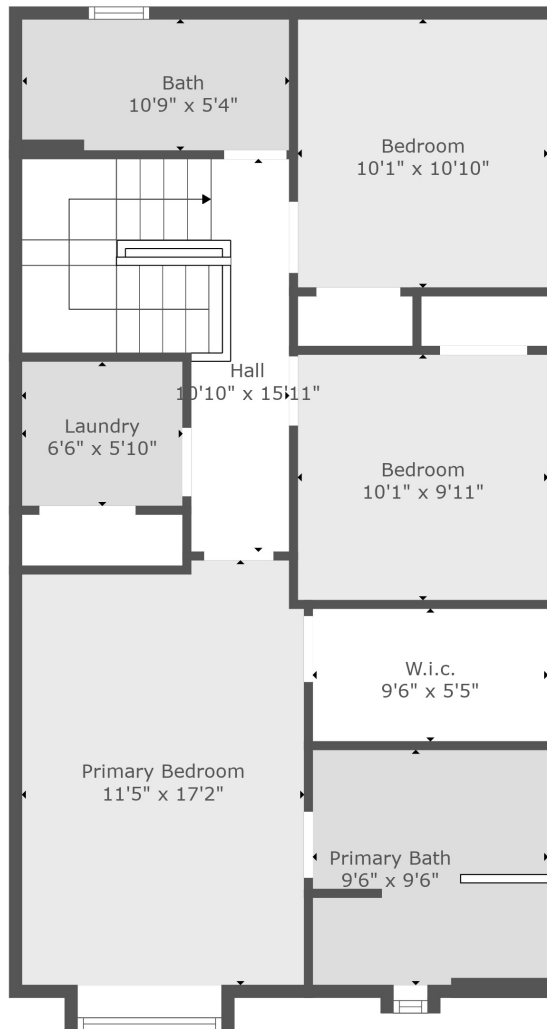


Floor 3

TOTAL: 2098 sq. ft
 BELOW GROUND: 555 sq. ft, FLOOR 2: 712 sq. ft, FLOOR 3: 831 sq. ft
 EXCLUDED AREAS: ELECTRICAL ROOM: 77 sq. ft, GARAGE: 382 sq. ft, DECK: 238 sq. ft,
 BAY WINDOW: 10 sq. ft

For Illustrative Purposes



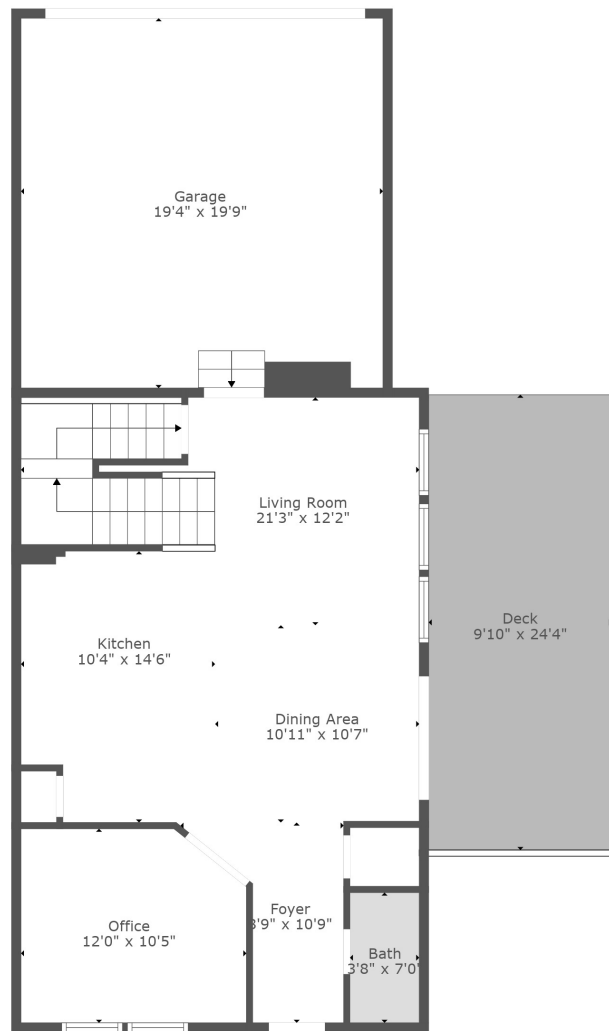


TOTAL: 2098 sq. ft

BELOW GROUND: 555 sq. ft, FLOOR 2: 712 sq. ft, FLOOR 3: 831 sq. ft
 EXCLUDED AREAS: ELECTRICAL ROOM: 77 sq. ft, GARAGE: 382 sq. ft, DECK: 238 sq. ft,
 BAY WINDOW: 10 sq. ft

For Illustrative Purposes



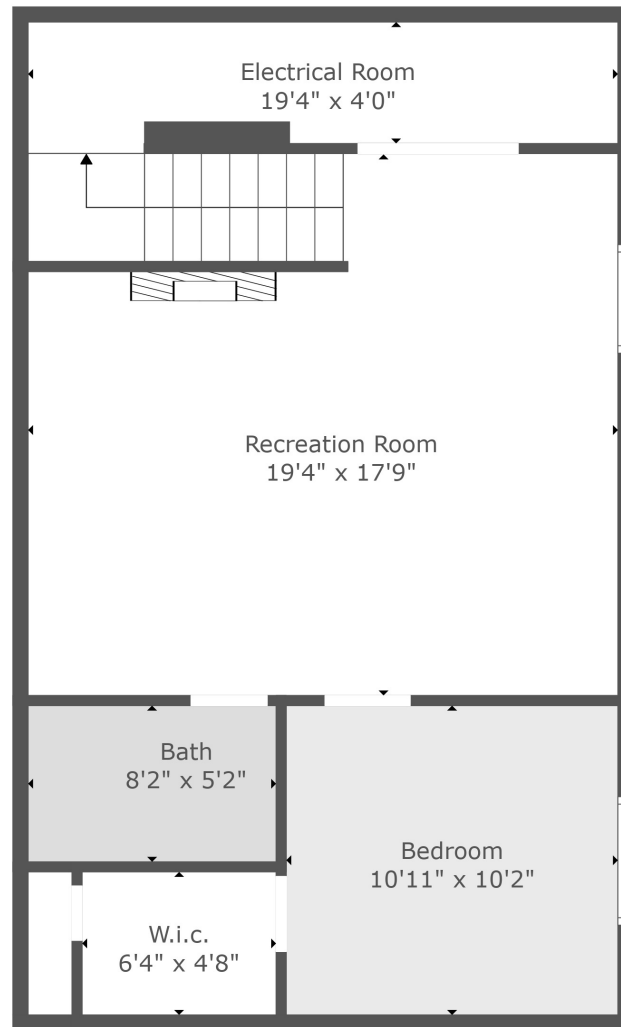


TOTAL: 2098 sq. ft

BELOW GROUND: 555 sq. ft, FLOOR 2: 712 sq. ft, FLOOR 3: 831 sq. ft
 EXCLUDED AREAS: ELECTRICAL ROOM: 77 sq. ft, GARAGE: 382 sq. ft, DECK: 238 sq. ft,
 BAY WINDOW: 10 sq. ft

For Illustrative Purposes





TOTAL: 2098 sq. ft

BELOW GROUND: 555 sq. ft, FLOOR 2: 712 sq. ft, FLOOR 3: 831 sq. ft

EXCLUDED AREAS: ELECTRICAL ROOM: 77 sq. ft, GARAGE: 382 sq. ft, DECK: 238 sq. ft,
BAY WINDOW: 10 sq. ft

For Illustrative Purposes

