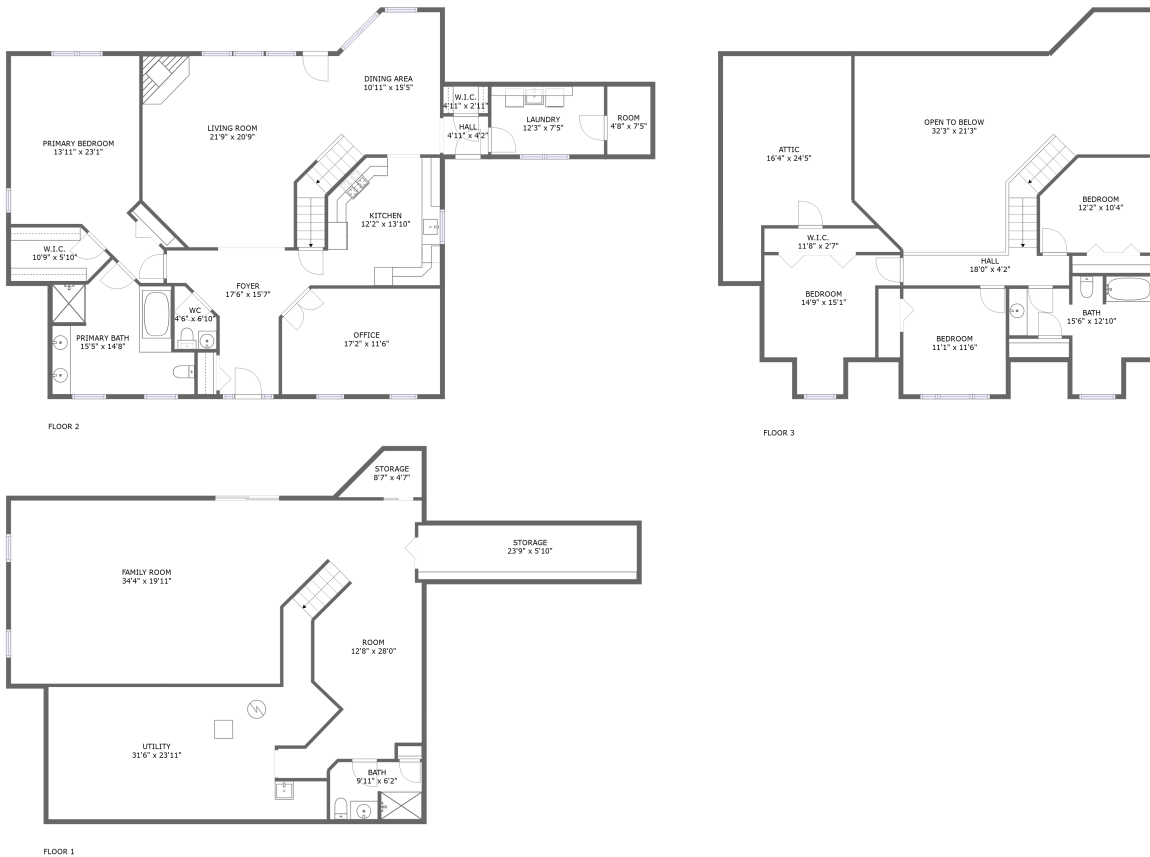


209 Canfield Drive, Chardon, Geauga County, Ohio, United States, 44024

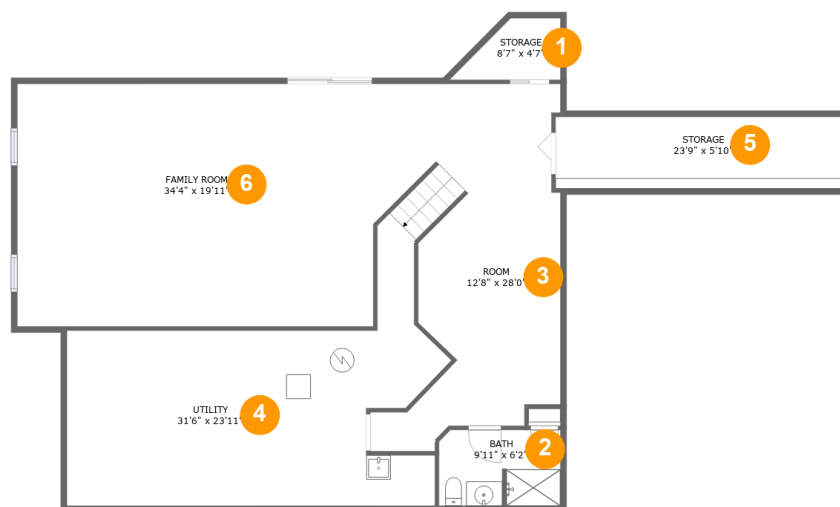


Property summary

0 Garages **4** Bedrooms **3** Bathrooms **1** Half baths

3 Floors **3,863** Gross living area sqft **5,445** Total sqft

209 Canfield Drive, Chardon, Geauga County, Ohio, United States, 44024



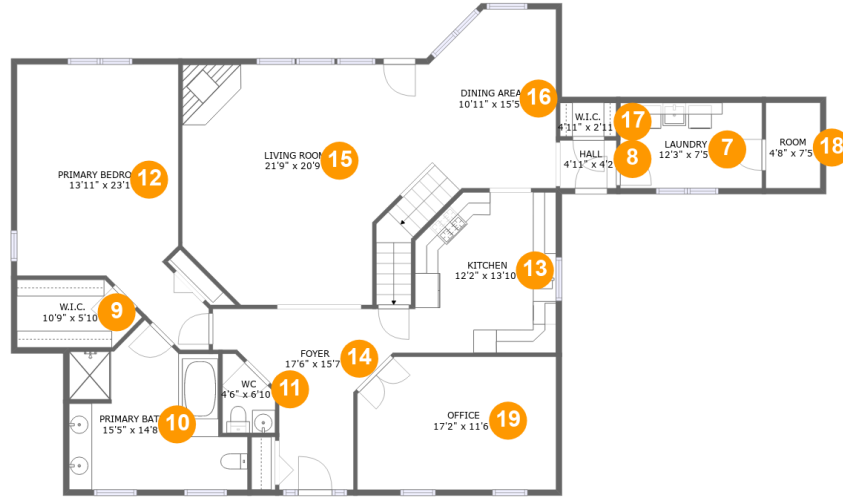
Room dimensions

Floor 1

Total sqft: 1763 Living area: 1096

#		Dimensions	sqft	Counted as living area
1	Storage	8'7" x 4'7"	33 sq. ft	No
2	Bath	9'11" x 6'2"	61 sq. ft	Yes
3	Room	12'8" x 28'0"	316 sq. ft	Yes
4	Utility	31'6" x 23'11"	437 sq. ft	No
5	Storage	23'9" x 5'10"	139 sq. ft	No
6	Living Room	34'4" x 19'11"	627 sq. ft	Yes

**209 Canfield Drive, Chardon, Geauga County, Ohio,
United States, 44024**



Room dimensions

Floor 2

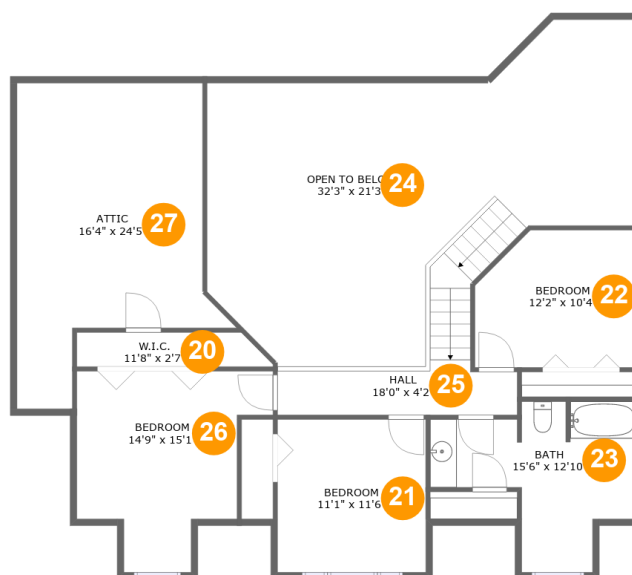
Total sqft: 1974 Living area: 1974

#		Dimensions	sqft	Counted as living area
7	Utility	12'3" x 7'5"	90 sq. ft	Yes
8	Hall	4'11" x 4'2"	20 sq. ft	Yes
9	Cl	10'9" x 5'10"	55 sq. ft	Yes
10	Bath	15'5" x 14'8"	171 sq. ft	Yes
11	Bath	4'6" x 6'10"	25 sq. ft	Yes
12	Bedroom	13'11" x 23'1"	284 sq. ft	Yes
13	Kitchen	12'2" x 13'10"	160 sq. ft	Yes
14	Entry	17'6" x 15'7"	153 sq. ft	Yes
15	Living Room	21'9" x 20'9"	425 sq. ft	Yes
16	Dining Room	10'11" x 15'5"	154 sq. ft	Yes
17	Cl	4'11" x 2'11"	14 sq. ft	Yes

**209 Canfield Drive, Chardon, Geauga County, Ohio,
United States, 44024**

#		Dimensions	sqft	Counted as living area
18	Room	4'8" x 7'5"	35 sq. ft	Yes
19	Office	17'2" x 11'6"	192 sq. ft	Yes

209 Canfield Drive, Chardon, Geauga County, Ohio,
United States, 44024



Room dimensions

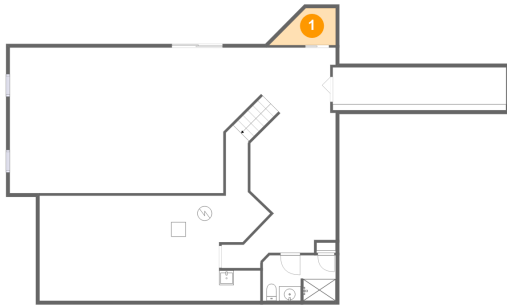
Floor 3

Total sqft: 1708 Living area: 793

#		Dimensions	sqft	Counted as living area
20	Cl	11'8" x 2'7"	35 sq. ft	Yes
21	Bedroom	11'1" x 11'6"	128 sq. ft	Yes
22	Bedroom	12'2" x 10'4"	117 sq. ft	Yes
23	Bath	15'6" x 12'10"	123 sq. ft	Yes
24	Open To Below	32'3" x 21'3"	544 sq. ft	No
25	Hall	18'0" x 4'2"	109 sq. ft	Yes
26	Bedroom	14'9" x 15'1"	145 sq. ft	Yes
27	Attic	16'4" x 24'5"	194 sq. ft	No

209 Canfield Drive, Chardon, Geauga County, Ohio,
United States, 44024

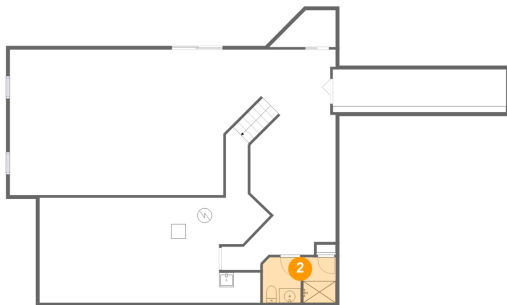
1 Floor 1 - Storage



Dimensions: 8'7" x 4'7"
Area: 33 sq. ft
Counted as living area: No

Heated: No
Finished: No
Enclosed: No
Contiguous: Yes
Permitted: Yes
Wet space: No
Addition: No
Conversion: No

2 Floor 1 - Bath

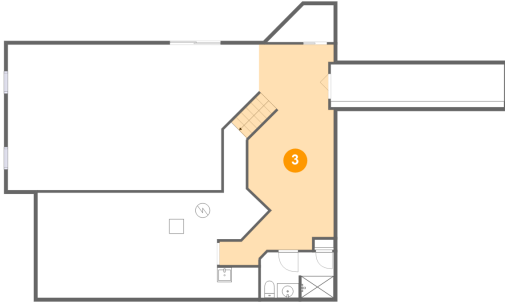


Dimensions: 9'11" x 6'2"
Area: 61 sq. ft
Counted as living area: Yes

Heated: Yes
Finished: Yes
Enclosed: Yes
Contiguous: Yes
Permitted: Yes
Wet space: Yes
Addition: No
Conversion: No

209 Canfield Drive, Chardon, Geauga County, Ohio,
United States, 44024

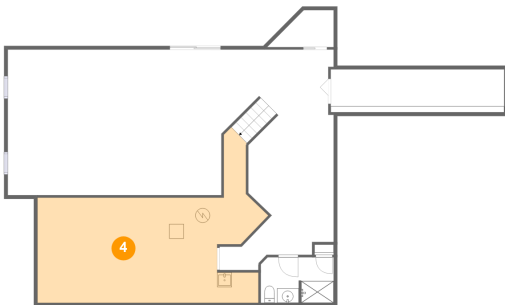
3 Floor 1 - Room



Dimensions: 12'8" x 28'0"
Area: 316 sq. ft
Counted as living area: Yes

Heated: Yes
Finished: Yes
Enclosed: Yes
Contiguous: Yes
Permitted: Yes
Wet space: No
Addition: No
Conversion: No

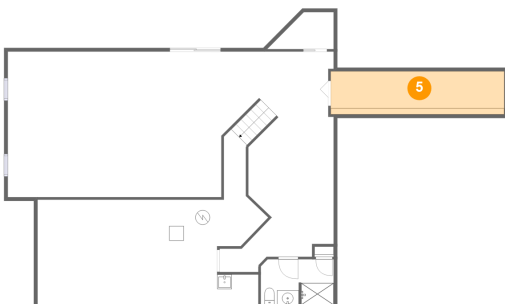
4 Floor 1 - Utility



Dimensions: 31'6" x 23'11"
Area: 437 sq. ft
Counted as living area: No

Heated: No
Finished: No
Enclosed: Yes
Contiguous: Yes
Permitted: Yes
Wet space: No
Addition: No
Conversion: No

5 Floor 1 - Storage

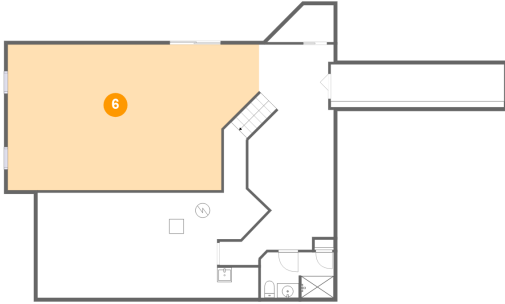


Dimensions: 23'9" x 5'10"
Area: 139 sq. ft
Counted as living area: No

Heated: No
Finished: No
Enclosed: No
Contiguous: Yes
Permitted: Yes
Wet space: No
Addition: No
Conversion: No

209 Canfield Drive, Chardon, Geauga County, Ohio,
United States, 44024

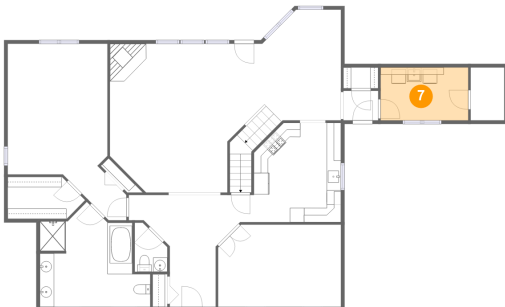
6 Floor 1 - Living Room



Dimensions: 34'4" x 19'11"
Area: 627 sq. ft
Counted as living area: Yes

Heated: Yes
Finished: Yes
Enclosed: Yes
Contiguous: Yes
Permitted: Yes
Wet space: No
Addition: No
Conversion: No

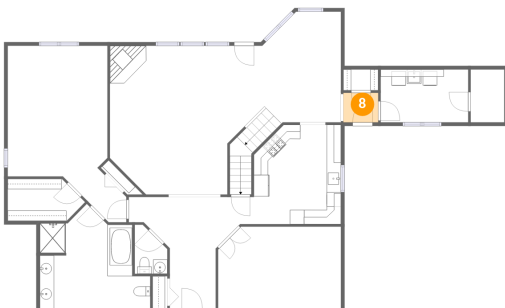
7 Floor 2 - Utility



Dimensions: 12'3" x 7'5"
Area: 90 sq. ft
Counted as living area: Yes

Heated: Yes
Finished: Yes
Enclosed: Yes
Contiguous: Yes
Permitted: Yes
Wet space: No
Addition: No
Conversion: No

8 Floor 2 - Hall



Dimensions: 4'11" x 4'2"
Area: 20 sq. ft
Counted as living area: Yes

Heated: Yes
Finished: Yes
Enclosed: Yes
Contiguous: Yes
Permitted: Yes
Wet space: No
Addition: No
Conversion: No

**209 Canfield Drive, Chardon, Geauga County, Ohio,
United States, 44024**

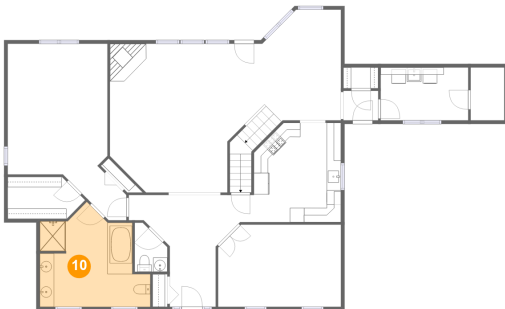
9 Floor 2 - Cl



Dimensions: 10'9" x 5'10"
Area: 55 sq. ft
Counted as living area: Yes

Heated: Yes
Finished: Yes
Enclosed: Yes
Contiguous: Yes
Permitted: Yes
Wet space: No
Addition: No
Conversion: No

10 Floor 2 - Bath



Dimensions: 15'5" x 14'8"
Area: 171 sq. ft
Counted as living area: Yes

Heated: Yes
Finished: Yes
Enclosed: Yes
Contiguous: Yes
Permitted: Yes
Wet space: Yes
Addition: No
Conversion: No

11 Floor 2 - Bath

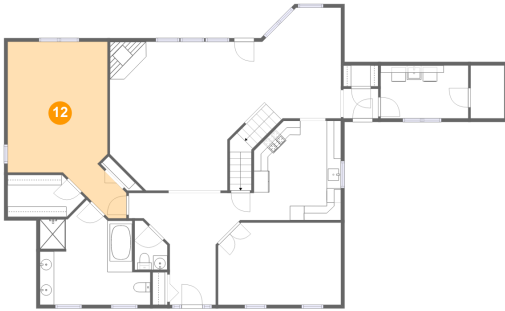


Dimensions: 4'6" x 6'10"
Area: 25 sq. ft
Counted as living area: Yes

Heated: Yes
Finished: Yes
Enclosed: Yes
Contiguous: Yes
Permitted: Yes
Wet space: Yes
Addition: No
Conversion: No

**209 Canfield Drive, Chardon, Geauga County, Ohio,
United States, 44024**

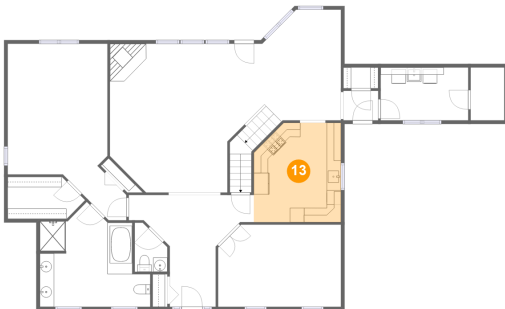
12 Floor 2 - Bedroom



Dimensions: 13'11" x 23'1"
Area: 284 sq. ft
Counted as living area: Yes

Heated: Yes
Finished: Yes
Enclosed: Yes
Contiguous: Yes
Permitted: Yes
Wet space: No
Addition: No
Conversion: No

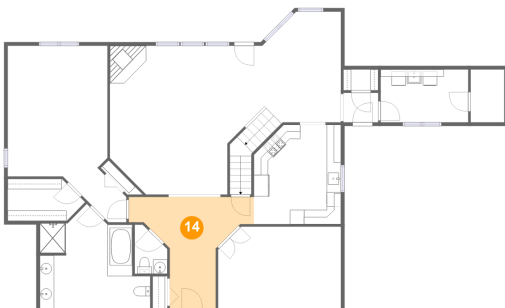
13 Floor 2 - Kitchen



Dimensions: 12'2" x 13'10"
Area: 160 sq. ft
Counted as living area: Yes

Heated: Yes
Finished: Yes
Enclosed: Yes
Contiguous: Yes
Permitted: Yes
Wet space: No
Addition: No
Conversion: No

14 Floor 2 - Entry



Dimensions: 17'6" x 15'7"
Area: 153 sq. ft
Counted as living area: Yes

Heated: Yes
Finished: Yes
Enclosed: Yes
Contiguous: Yes
Permitted: Yes
Wet space: No
Addition: No
Conversion: No

**209 Canfield Drive, Chardon, Geauga County, Ohio,
United States, 44024**

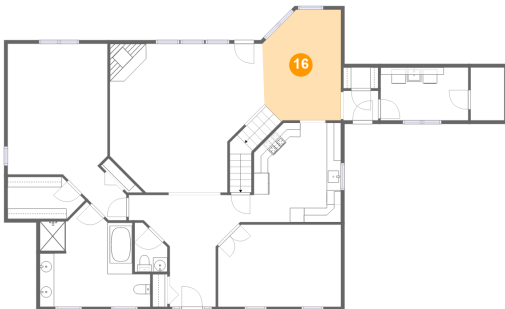
15 Floor 2 - Living Room



Dimensions: 21'9" x 20'9"
Area: 425 sq. ft
Counted as living area: Yes

Heated: Yes
Finished: Yes
Enclosed: Yes
Contiguous: Yes
Permitted: Yes
Wet space: No
Addition: No
Conversion: No

16 Floor 2 - Dining Room



Dimensions: 10'11" x 15'5"
Area: 154 sq. ft
Counted as living area: Yes

Heated: Yes
Finished: Yes
Enclosed: Yes
Contiguous: Yes
Permitted: Yes
Wet space: No
Addition: No
Conversion: No

17 Floor 2 - Cl



Dimensions: 4'11" x 2'11"
Area: 14 sq. ft
Counted as living area: Yes

Heated: Yes
Finished: Yes
Enclosed: Yes
Contiguous: Yes
Permitted: Yes
Wet space: No
Addition: No
Conversion: No

**209 Canfield Drive, Chardon, Geauga County, Ohio,
United States, 44024**

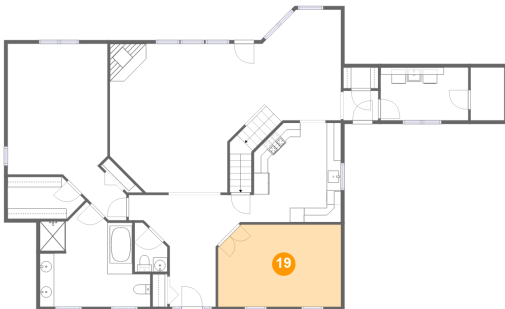
18 Floor 2 - Room



Dimensions: 4'8" x 7'5"
Area: 35 sq. ft
Counted as living area: Yes

Heated: Yes
Finished: Yes
Enclosed: Yes
Contiguous: Yes
Permitted: Yes
Wet space: No
Addition: No
Conversion: No

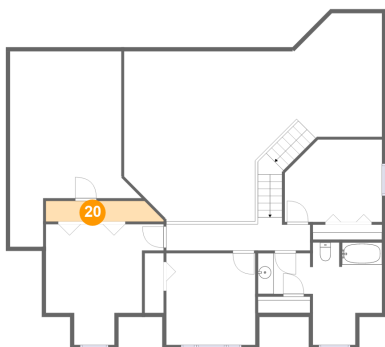
19 Floor 2 - Office



Dimensions: 17'2" x 11'6"
Area: 192 sq. ft
Counted as living area: Yes

Heated: Yes
Finished: Yes
Enclosed: Yes
Contiguous: Yes
Permitted: Yes
Wet space: No
Addition: No
Conversion: No

20 Floor 3 - Cl

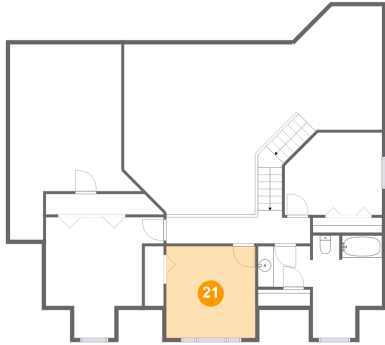


Dimensions: 11'8" x 2'7"
Area: 35 sq. ft
Counted as living area: Yes

Heated: Yes
Finished: Yes
Enclosed: Yes
Contiguous: Yes
Permitted: Yes
Wet space: No
Addition: No
Conversion: No

**209 Canfield Drive, Chardon, Geauga County, Ohio,
United States, 44024**

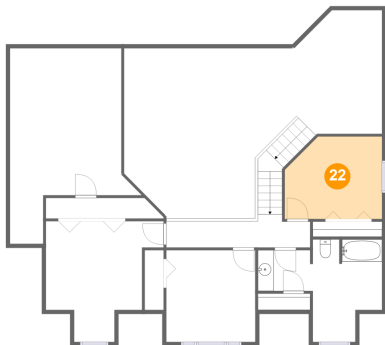
21 Floor 3 - Bedroom



Dimensions: 11'1" x 11'6"
Area: 128 sq. ft
Counted as living area: Yes

Heated: Yes
Finished: Yes
Enclosed: Yes
Contiguous: Yes
Permitted: Yes
Wet space: No
Addition: No
Conversion: No

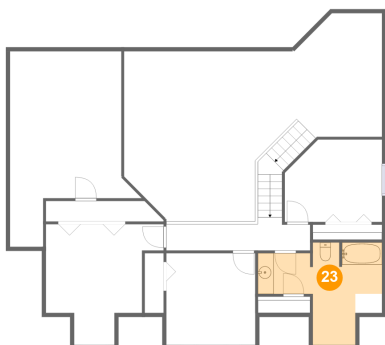
22 Floor 3 - Bedroom



Dimensions: 12'2" x 10'4"
Area: 117 sq. ft
Counted as living area: Yes

Heated: Yes
Finished: Yes
Enclosed: Yes
Contiguous: Yes
Permitted: Yes
Wet space: No
Addition: No
Conversion: No

23 Floor 3 - Bath

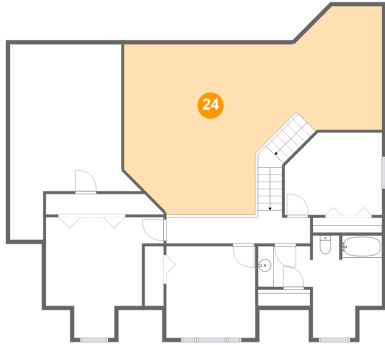


Dimensions: 15'6" x 12'10"
Area: 123 sq. ft
Counted as living area: Yes

Heated: Yes
Finished: Yes
Enclosed: Yes
Contiguous: Yes
Permitted: Yes
Wet space: Yes
Addition: No
Conversion: No

**209 Canfield Drive, Chardon, Geauga County, Ohio,
United States, 44024**

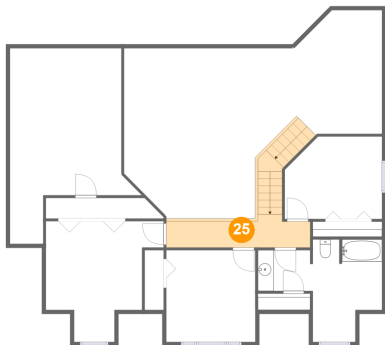
24 Floor 3 - Open To Below



Dimensions: 32'3" x 21'3"
Area: 544 sq. ft
Counted as living area: No

Heated: No
Finished: No
Enclosed: No
Contiguous: Yes
Permitted: No
Wet space: No
Addition: No
Conversion: No

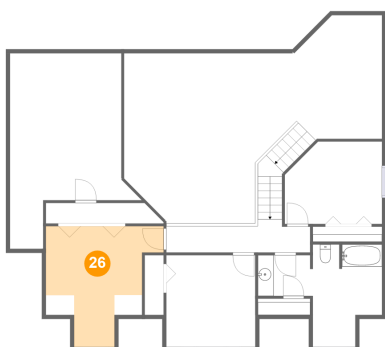
25 Floor 3 - Hall



Dimensions: 18'0" x 4'2"
Area: 109 sq. ft
Counted as living area: Yes

Heated: Yes
Finished: Yes
Enclosed: Yes
Contiguous: Yes
Permitted: Yes
Wet space: No
Addition: No
Conversion: No

26 Floor 3 - Bedroom

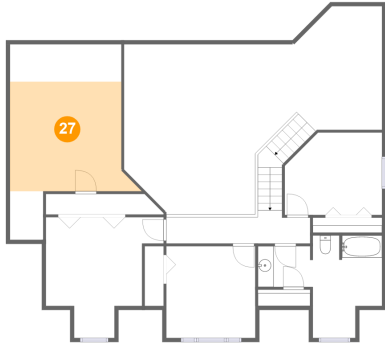


Dimensions: 14'9" x 15'1"
Area: 145 sq. ft
Counted as living area: Yes

Heated: Yes
Finished: Yes
Enclosed: Yes
Contiguous: Yes
Permitted: Yes
Wet space: No
Addition: No
Conversion: No

**209 Canfield Drive, Chardon, Geauga County, Ohio,
United States, 44024**

27 Floor 3 - Attic



Dimensions: 16'4" x 24'5"
Area: 194 sq. ft
Counted as living area: No

Heated: No
Finished: No
Enclosed: Yes
Contiguous: Yes
Permitted: Yes
Wet space: No
Addition: No
Conversion: No