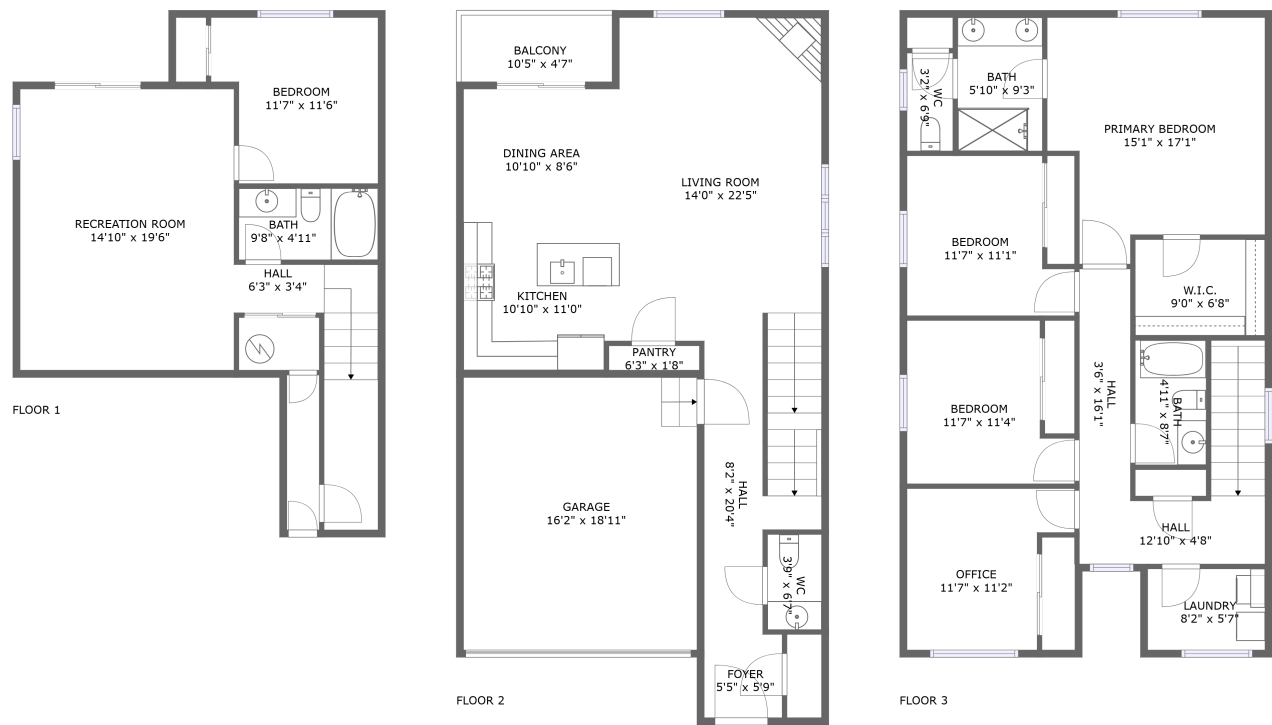




Home report


1550 19th Avenue, Forest Grove, Washington County, Oregon,
United States, 97116





Property summary


 **1** Garages


 **4** Bedrooms

 **3** Bathrooms

 **1** Half baths

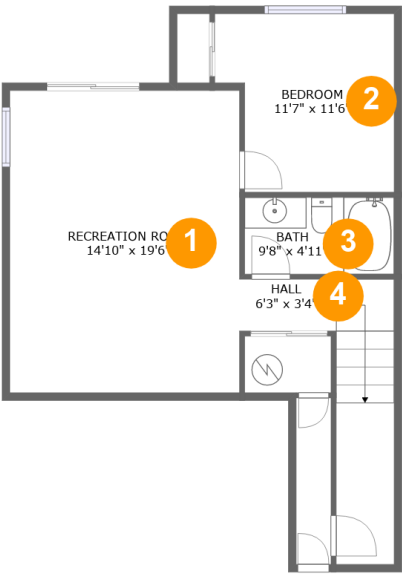
 **3** Floors

 **2,640** Gross living area sqft

 **3,011** Total sqft

Home report

1550 19th Avenue, Forest Grove, Washington County, Oregon,
United States, 97116



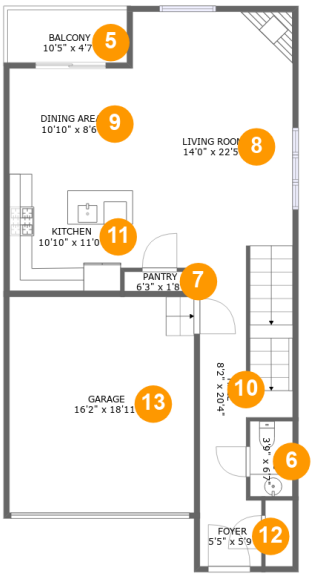
Room dimensions

Floor 1 Total sqft: 684 Living area: 684

#		Dimensions	sqft	Counted as living area
1	Recreation Room	14'10" x 19'6"	289 sq. ft	Yes
2	Bedroom	11'7" x 11'6"	120 sq. ft	Yes
3	Bath	9'8" x 4'11"	48 sq. ft	Yes
4	Hall	6'3" x 3'4"	90 sq. ft	Yes

Home report

1550 19th Avenue, Forest Grove, Washington County, Oregon,
United States, 97116



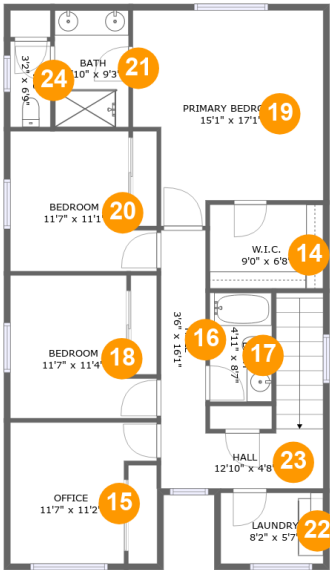
Room dimensions

Floor 2 Total sqft: 1194 Living area: 823

#		Dimensions	sqft	Counted as living area
5	Balcony	10'5" x 4'7"	48 sq. ft	No
6	WC	3'9" x 6'7"	25 sq. ft	Yes
7	Pantry	6'3" x 1'8"	11 sq. ft	Yes
8	Living Room	14'0" x 22'5"	314 sq. ft	Yes
9	Dining Area	10'10" x 8'6"	92 sq. ft	Yes
10	Hall	8'2" x 20'4"	137 sq. ft	Yes
11	Kitchen	10'10" x 11'0"	116 sq. ft	Yes
12	Foyer	5'5" x 5'9"	31 sq. ft	Yes
13	Garage	16'2" x 18'11"	306 sq. ft	No

Home report

1550 19th Avenue, Forest Grove, Washington County, Oregon,
United States, 97116



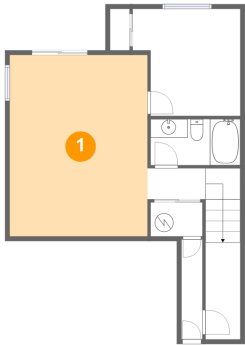
Room dimensions

Floor 3 Total sqft: 1133 Living area: 1133

#		Dimensions	sqft	Counted as living area
14	W.I.C.	9'0" x 6'8"	60 sq. ft	Yes
15	Office	11'7" x 11'2"	109 sq. ft	Yes
16	Hall	3'6" x 16'1"	57 sq. ft	Yes
17	Bath	4'11" x 8'7"	42 sq. ft	Yes
18	Bedroom	11'7" x 11'4"	112 sq. ft	Yes
19	Primary Bedroom	15'1" x 17'1"	221 sq. ft	Yes
20	Bedroom	11'7" x 11'1"	111 sq. ft	Yes
21	Bath	5'10" x 9'3"	54 sq. ft	Yes
22	Laundry	8'2" x 5'7"	46 sq. ft	Yes
23	Hall	12'10" x 4'8"	98 sq. ft	Yes
24	WC	3'2" x 6'9"	22 sq. ft	Yes

1550 19th Avenue, Forest Grove, Washington County, Oregon,
United States, 97116

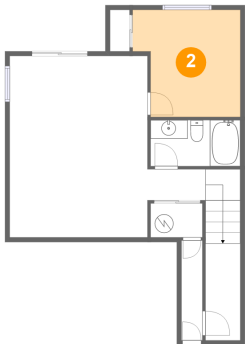
1 Floor 1 - Recreation Room



Dimensions: 14'10" x 19'6"
Area: 289 sq. ft
Counted as living area: Yes

Heated: Yes
Finished: Yes
Enclosed: Yes
Contiguous: Yes
Permitted: Yes
Wet space: No
Addition: No
Conversion: No

2 Floor 1 - Bedroom

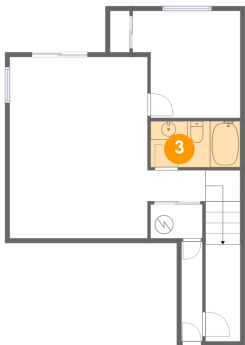


Dimensions: 11'7" x 11'6"
Area: 120 sq. ft
Counted as living area: Yes

Heated: Yes
Finished: Yes
Enclosed: Yes
Contiguous: Yes
Permitted: Yes
Wet space: No
Addition: No
Conversion: No

1550 19th Avenue, Forest Grove, Washington County, Oregon,
United States, 97116

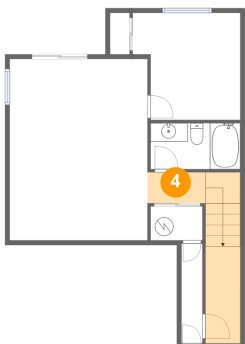
3 Floor 1 - Bath



Dimensions: 9'8" x 4'11"
Area: 48 sq. ft
Counted as living area: Yes

Heated: Yes
Finished: Yes
Enclosed: Yes
Contiguous: Yes
Permitted: Yes
Wet space: Yes
Addition: No
Conversion: No

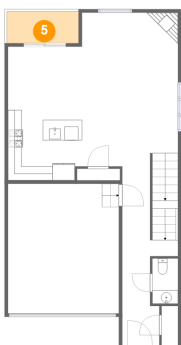
4 Floor 1 - Hall



Dimensions: 6'3" x 3'4"
Area: 90 sq. ft
Counted as living area: Yes

Heated: Yes
Finished: Yes
Enclosed: Yes
Contiguous: Yes
Permitted: Yes
Wet space: No
Addition: No
Conversion: No

5 Floor 2 - Balcony

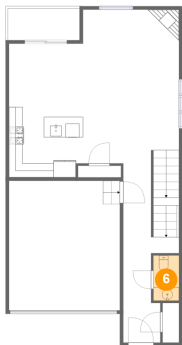


Dimensions: 10'5" x 4'7"
Area: 48 sq. ft
Counted as living area: No

Heated: No
Finished: Yes
Enclosed: No
Contiguous: Yes
Permitted: Yes
Wet space: No
Addition: No
Conversion: No

1550 19th Avenue, Forest Grove, Washington County, Oregon,
United States, 97116

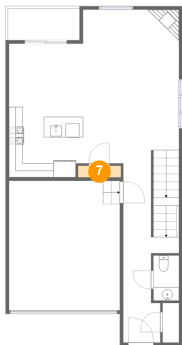
6 Floor 2 - WC



Dimensions: 3'9" x 6'7"
Area: 25 sq. ft
Counted as living area: Yes

Heated: Yes
Finished: Yes
Enclosed: Yes
Contiguous: Yes
Permitted: Yes
Wet space: Yes
Addition: No
Conversion: No

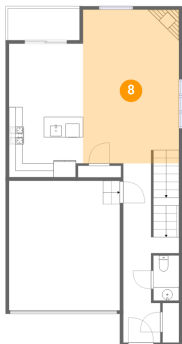
7 Floor 2 - Pantry



Dimensions: 6'3" x 1'8"
Area: 11 sq. ft
Counted as living area: Yes

Heated: Yes
Finished: Yes
Enclosed: Yes
Contiguous: Yes
Permitted: Yes
Wet space: No
Addition: No
Conversion: No

8 Floor 2 - Living Room



Dimensions: 14'0" x 22'5"
Area: 314 sq. ft
Counted as living area: Yes

Heated: Yes
Finished: Yes
Enclosed: Yes
Contiguous: Yes
Permitted: Yes
Wet space: No
Addition: No
Conversion: No

Home report

1550 19th Avenue, Forest Grove, Washington County, Oregon,
United States, 97116

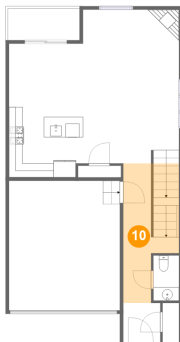
9 Floor 2 - Dining Area



Dimensions: 10'10" x 8'6"
Area: 92 sq. ft
Counted as living area: Yes

Heated: Yes
Finished: Yes
Enclosed: Yes
Contiguous: Yes
Permitted: Yes
Wet space: No
Addition: No
Conversion: No

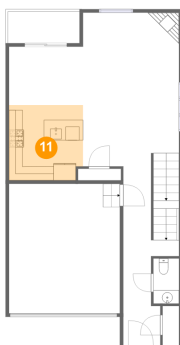
10 Floor 2 - Hall



Dimensions: 8'2" x 20'4"
Area: 137 sq. ft
Counted as living area: Yes

Heated: Yes
Finished: Yes
Enclosed: Yes
Contiguous: Yes
Permitted: Yes
Wet space: No
Addition: No
Conversion: No

11 Floor 2 - Kitchen



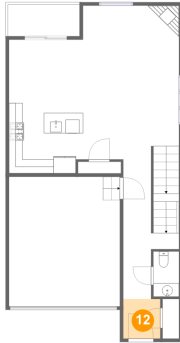
Dimensions: 10'10" x 11'0"
Area: 116 sq. ft
Counted as living area: Yes

Heated: Yes
Finished: Yes
Enclosed: Yes
Contiguous: Yes
Permitted: Yes
Wet space: No
Addition: No
Conversion: No

Home report

1550 19th Avenue, Forest Grove, Washington County, Oregon,
United States, 97116

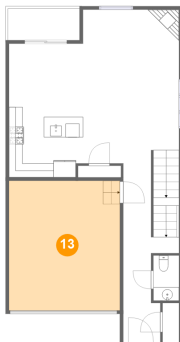
12 Floor 2 - Foyer



Dimensions: 5'5" x 5'9"
Area: 31 sq. ft
Counted as living area: Yes

Heated: Yes
Finished: Yes
Enclosed: Yes
Contiguous: Yes
Permitted: Yes
Wet space: No
Addition: No
Conversion: No

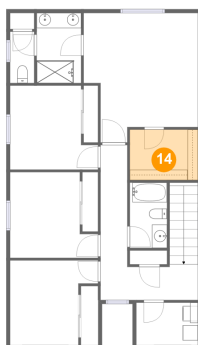
13 Floor 2 - Garage



Dimensions: 16'2" x 18'11"
Area: 306 sq. ft
Counted as living area: No

Heated: No
Finished: No
Enclosed: Yes
Contiguous: Yes
Permitted: Yes
Wet space: No
Addition: No
Conversion: No

14 Floor 3 - W.I.C.



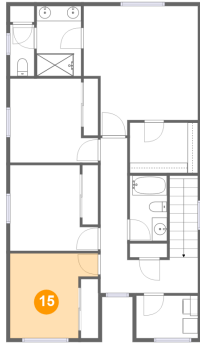
Dimensions: 9'0" x 6'8"
Area: 60 sq. ft
Counted as living area: Yes

Heated: Yes
Finished: Yes
Enclosed: Yes
Contiguous: Yes
Permitted: Yes
Wet space: No
Addition: No
Conversion: No

Home report

1550 19th Avenue, Forest Grove, Washington County, Oregon,
United States, 97116

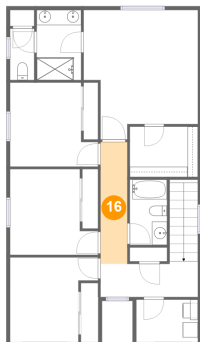
15 Floor 3 - Office



Dimensions: 11'7" x 11'2"
Area: 109 sq. ft
Counted as living area: Yes

Heated: Yes
Finished: Yes
Enclosed: Yes
Contiguous: Yes
Permitted: Yes
Wet space: No
Addition: No
Conversion: No

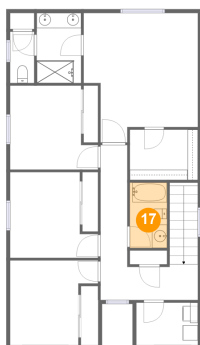
16 Floor 3 - Hall



Dimensions: 3'6" x 16'1"
Area: 57 sq. ft
Counted as living area: Yes

Heated: Yes
Finished: Yes
Enclosed: Yes
Contiguous: Yes
Permitted: Yes
Wet space: No
Addition: No
Conversion: No

17 Floor 3 - Bath

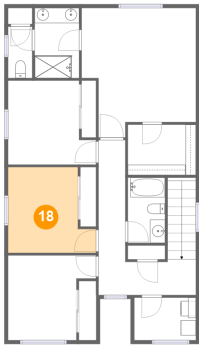


Dimensions: 4'11" x 8'7"
Area: 42 sq. ft
Counted as living area: Yes

Heated: Yes
Finished: Yes
Enclosed: Yes
Contiguous: Yes
Permitted: Yes
Wet space: Yes
Addition: No
Conversion: No

1550 19th Avenue, Forest Grove, Washington County, Oregon,
United States, 97116

18 Floor 3 - Bedroom



Dimensions: 11'7" x 11'4"
Area: 112 sq. ft
Counted as living area: Yes

Heated: Yes
Finished: Yes
Enclosed: Yes
Contiguous: Yes
Permitted: Yes
Wet space: No
Addition: No
Conversion: No

19 Floor 3 - Primary Bedroom



Dimensions: 15'1" x 17'1"
Area: 221 sq. ft
Counted as living area: Yes

Heated: Yes
Finished: Yes
Enclosed: Yes
Contiguous: Yes
Permitted: Yes
Wet space: No
Addition: No
Conversion: No

20 Floor 3 - Bedroom



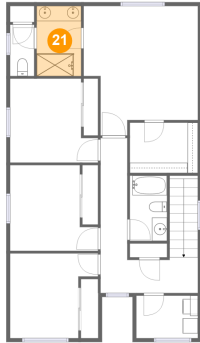
Dimensions: 11'7" x 11'1"
Area: 111 sq. ft
Counted as living area: Yes

Heated: Yes
Finished: Yes
Enclosed: Yes
Contiguous: Yes
Permitted: Yes
Wet space: No
Addition: No
Conversion: No

Home report

1550 19th Avenue, Forest Grove, Washington County, Oregon,
United States, 97116

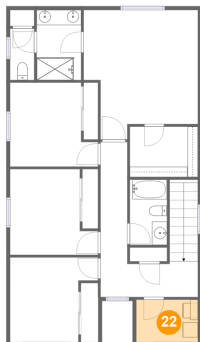
21 Floor 3 - Bath



Dimensions: 5'10" x 9'3"
Area: 54 sq. ft
Counted as living area: Yes

Heated: Yes
Finished: Yes
Enclosed: Yes
Contiguous: Yes
Permitted: Yes
Wet space: Yes
Addition: No
Conversion: No

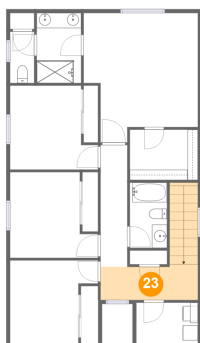
22 Floor 3 - Laundry



Dimensions: 8'2" x 5'7"
Area: 46 sq. ft
Counted as living area: Yes

Heated: Yes
Finished: Yes
Enclosed: Yes
Contiguous: Yes
Permitted: Yes
Wet space: No
Addition: No
Conversion: No

23 Floor 3 - Hall

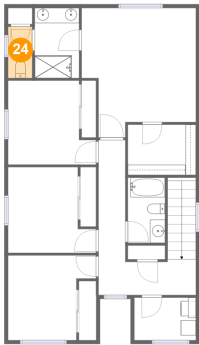


Dimensions: 12'10" x 4'8"
Area: 98 sq. ft
Counted as living area: Yes

Heated: Yes
Finished: Yes
Enclosed: Yes
Contiguous: Yes
Permitted: Yes
Wet space: No
Addition: No
Conversion: No

1550 19th Avenue, Forest Grove, Washington County, Oregon,
United States, 97116

24 Floor 3 - WC



Dimensions: 3'2" x 6'9"
Area: 22 sq. ft
Counted as living area: Yes

Heated: Yes
Finished: Yes
Enclosed: Yes
Contiguous: Yes
Permitted: Yes
Wet space: Yes
Addition: No
Conversion: No