

Home report

5405 Vineyard Drive, Paso Robles, San Luis Obispo County,  
California, United States, 93446



Total Area: 6400 sq. ft

Floor 1: 3886 sq. ft, Floor 2: 1982 sq. ft, Floor 3: 532 sq. ft

Excluded: Garage 828 sq. ft, Opentobelow 293 sq. ft, Low Ceiling 148 sq. ft

Property summary

 **3** Floors

 **5** Bedrooms

 **4** Bathrooms

Home report

**5405 Vineyard Drive, Paso Robles, San Luis Obispo County,  
California, United States, 93446**

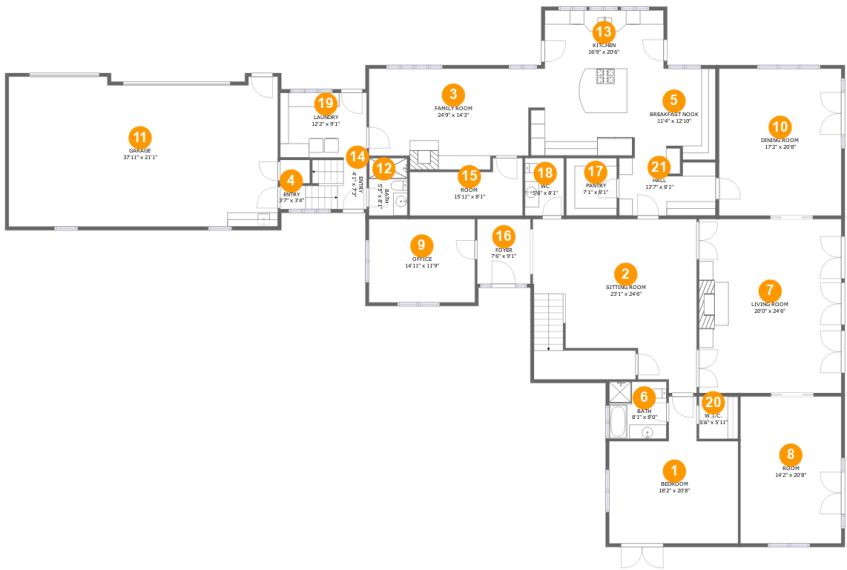


**2**  
Half baths



**1**  
Garages

5405 Vineyard Drive, Paso Robles, San Luis Obispo County,  
California, United States, 93446



Room dimensions

Floor 1 Total:3886sqft    Excluded: 828sqft

| #  |                | Max Dimensions | sqft       | Included |
|----|----------------|----------------|------------|----------|
| 1  | Bedroom        | 18'2" x 20'8"  | 286 sq. ft | Yes      |
| 2  | Sitting Room   | 23'1" x 24'6"  | 520 sq. ft | Yes      |
| 3  | Family Room    | 24'9" x 14'3"  | 310 sq. ft | Yes      |
| 4  | Entry          | 3'7" x 3'4"    | 27 sq. ft  | Yes      |
| 5  | Breakfast Nook | 11'4" x 12'10" | 113 sq. ft | Yes      |
| 6  | Bath           | 8'1" x 8'0"    | 65 sq. ft  | Yes      |
| 7  | Living Room    | 20'0" x 24'6"  | 490 sq. ft | Yes      |
| 8  | Room           | 14'2" x 20'8"  | 293 sq. ft | Yes      |
| 9  | Office         | 14'11" x 11'9" | 175 sq. ft | Yes      |
| 10 | Dining Room    | 17'2" x 20'8"  | 355 sq. ft | Yes      |
| 11 | Garage         | 37'11" x 21'1" | 775 sq. ft | No       |

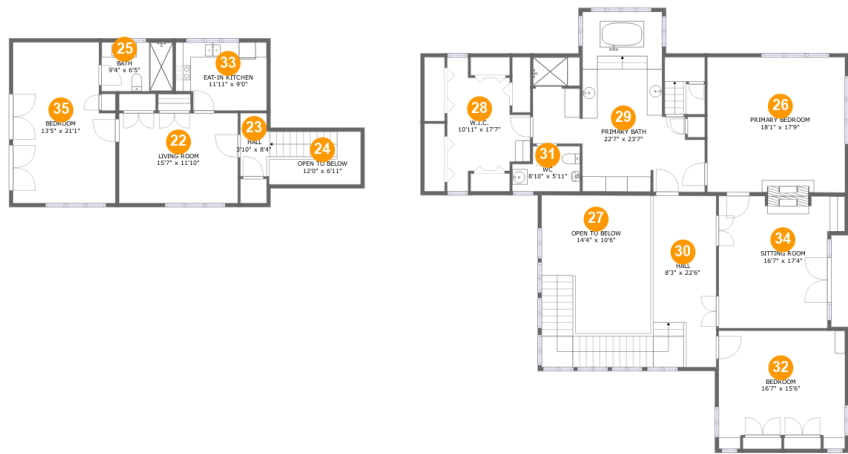
## Home report

**5405 Vineyard Drive, Paso Robles, San Luis Obispo County,  
California, United States, 93446**

| #  |         | Max Dimensions | sqft       | Included |
|----|---------|----------------|------------|----------|
| 12 | Bath    | 5'5" x 8'1"    | 44 sq. ft  | Yes      |
| 13 | Kitchen | 16'9" x 20'6"  | 324 sq. ft | Yes      |
| 14 | Entry   | 4'1" x 7'3"    | 42 sq. ft  | Yes      |
| 15 | Room    | 15'11" x 8'1"  | 105 sq. ft | Yes      |
| 16 | Foyer   | 7'6" x 9'1"    | 68 sq. ft  | Yes      |
| 17 | Pantry  | 7'1" x 8'1"    | 58 sq. ft  | Yes      |
| 18 | WC      | 5'6" x 8'1"    | 44 sq. ft  | Yes      |
| 19 | Laundry | 12'2" x 9'1"   | 111 sq. ft | Yes      |
| 20 | W.I.C.  | 5'6" x 5'11"   | 33 sq. ft  | Yes      |
| 21 | Hall    | 13'7" x 8'1"   | 116 sq. ft | Yes      |

Home report

5405 Vineyard Drive, Paso Robles, San Luis Obispo County,  
California, United States, 93446



Room dimensions

Floor 2 Total:2775sqft   Excluded: 293sqft

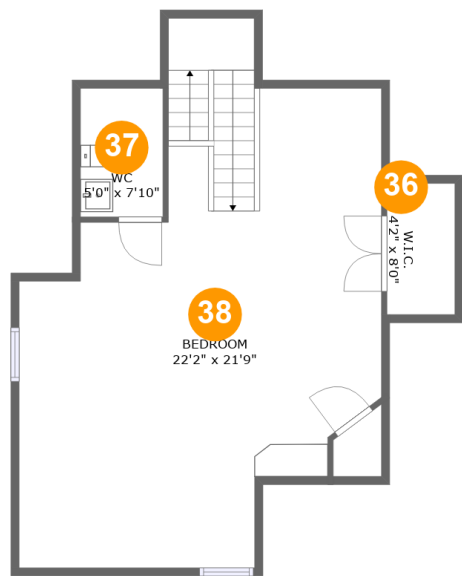
| #  |                 | Max Dimensions | sqft       | Included |
|----|-----------------|----------------|------------|----------|
| 22 | Living Room     | 15'7" x 11'10" | 184 sq. ft | Yes      |
| 23 | Hall            | 3'10" x 8'4"   | 63 sq. ft  | Yes      |
| 24 | Open To Below   | 12'0" x 6'11"  | 51 sq. ft  | No       |
| 25 | Bath            | 9'4" x 6'5"    | 60 sq. ft  | Yes      |
| 26 | Primary Bedroom | 18'1" x 17'9"  | 323 sq. ft | Yes      |
| 27 | Open To Below   | 14'4" x 10'6"  | 226 sq. ft | No       |
| 28 | W.I.C.          | 10'11" x 17'7" | 131 sq. ft | Yes      |
| 29 | Primary Bath    | 22'7" x 23'7"  | 363 sq. ft | Yes      |
| 30 | Hall            | 8'3" x 22'6"   | 290 sq. ft | Yes      |
| 31 | WC              | 8'10" x 5'11"  | 46 sq. ft  | Yes      |
| 32 | Bedroom         | 16'7" x 15'6"  | 237 sq. ft | Yes      |

Home report

5405 Vineyard Drive, Paso Robles, San Luis Obispo County,  
California, United States, 93446

| #  |                | Max Dimensions | sqft       | Included |
|----|----------------|----------------|------------|----------|
| 33 | Eat-in Kitchen | 11'11" x 9'0"  | 101 sq. ft | Yes      |
| 34 | Sitting Room   | 16'7" x 17'4"  | 257 sq. ft | Yes      |
| 35 | Bedroom        | 13'5" x 21'1"  | 263 sq. ft | Yes      |

5405 Vineyard Drive, Paso Robles, San Luis Obispo County,  
California, United States, 93446



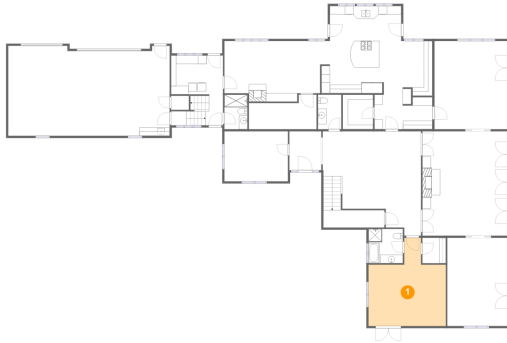
Room dimensions

Floor 3 Total:532sqft    Excluded: 148sqft

| #  |         | Max Dimensions | sqft       | Included |
|----|---------|----------------|------------|----------|
| 36 | W.I.C.  | 4'2" x 8'0"    | 16 sq. ft  | Yes      |
| 37 | WC      | 5'0" x 7'10"   | 22 sq. ft  | Yes      |
| 38 | Bedroom | 22'2" x 21'9"  | 446 sq. ft | Yes      |

5405 Vineyard Drive, Paso Robles, San Luis Obispo County,  
California, United States, 93446

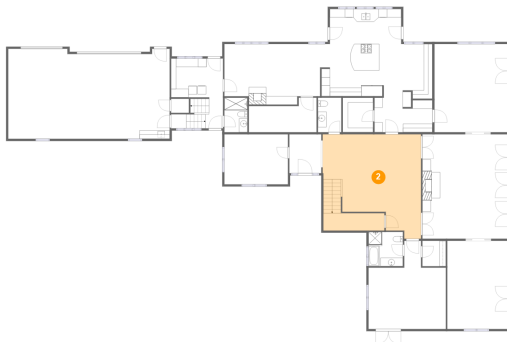
## 1 Floor 1 - Bedroom



Max Dimensions: 18'2" x 20'8"  
Calculated Area: 286 sq. ft  
Included: Yes

Heated: Yes  
Finished: Yes  
Enclosed: Yes  
Contiguous: Yes  
Permitted: Yes  
Wet space: No  
Addition: No  
Conversion: No

## 2 Floor 1 - Sitting Room



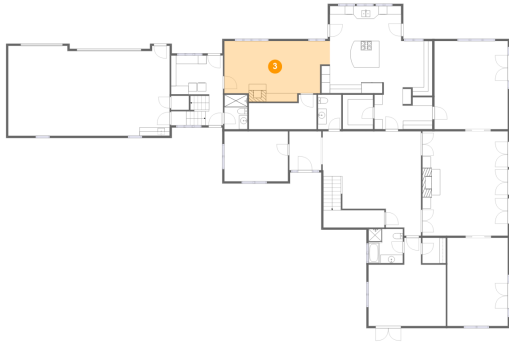
Max Dimensions: 23'1" x 24'6"  
Calculated Area: 520 sq. ft  
Included: Yes

Heated: Yes  
Finished: Yes  
Enclosed: Yes  
Contiguous: Yes  
Permitted: Yes  
Wet space: No  
Addition: No  
Conversion: No



5405 Vineyard Drive, Paso Robles, San Luis Obispo County,  
California, United States, 93446

### 3 Floor 1 - Family Room



Max Dimensions: 24'9" x 14'3"  
Calculated Area: 310 sq. ft  
Included: Yes

Heated: Yes  
Finished: Yes  
Enclosed: Yes  
Contiguous: Yes  
Permitted: Yes  
Wet space: No  
Addition: No  
Conversion: No

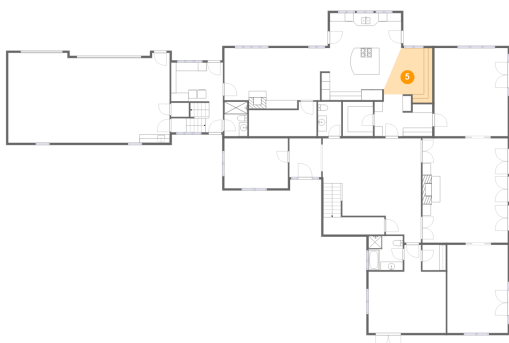
### 4 Floor 1 - Entry



Max Dimensions: 3'7" x 3'4"  
Calculated Area: 27 sq. ft  
Included: Yes

Heated: Yes  
Finished: Yes  
Enclosed: Yes  
Contiguous: Yes  
Permitted: Yes  
Wet space: No  
Addition: No  
Conversion: No

### 5 Floor 1 - Breakfast Nook

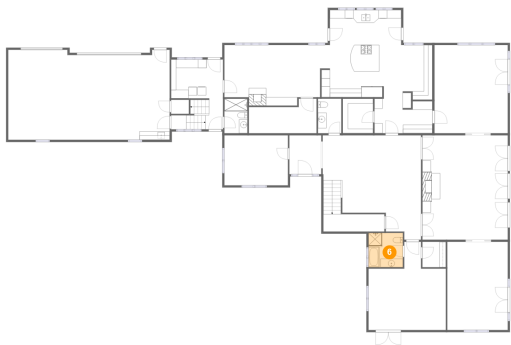


Max Dimensions: 11'4" x 12'10"  
Calculated Area: 113 sq. ft  
Included: Yes

Heated: Yes  
Finished: Yes  
Enclosed: Yes  
Contiguous: Yes  
Permitted: Yes  
Wet space: No  
Addition: No  
Conversion: No

5405 Vineyard Drive, Paso Robles, San Luis Obispo County,  
California, United States, 93446

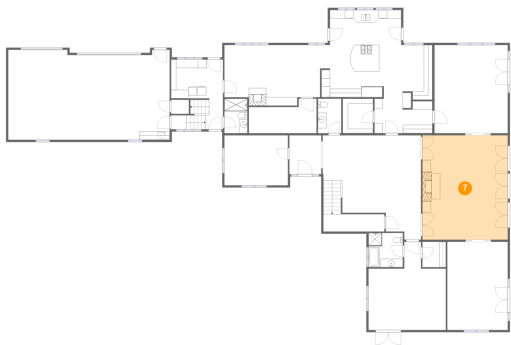
6 Floor 1 - Bath



Max Dimensions: 8'1" x 8'0"  
Calculated Area: 65 sq. ft  
Included: Yes

Heated: Yes  
Finished: Yes  
Enclosed: Yes  
Contiguous: Yes  
Permitted: Yes  
Wet space: Yes  
Addition: No  
Conversion: No

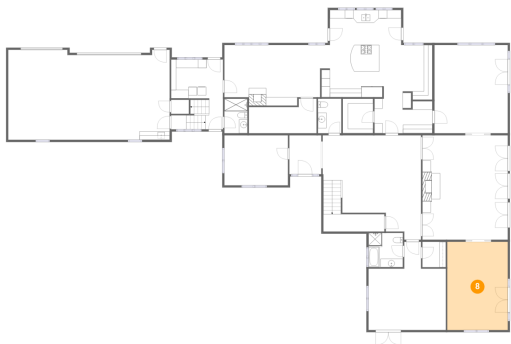
7 Floor 1 - Living Room



Max Dimensions: 20'0" x 24'6"  
Calculated Area: 490 sq. ft  
Included: Yes

Heated: Yes  
Finished: Yes  
Enclosed: Yes  
Contiguous: Yes  
Permitted: Yes  
Wet space: No  
Addition: No  
Conversion: No

8 Floor 1 - Room

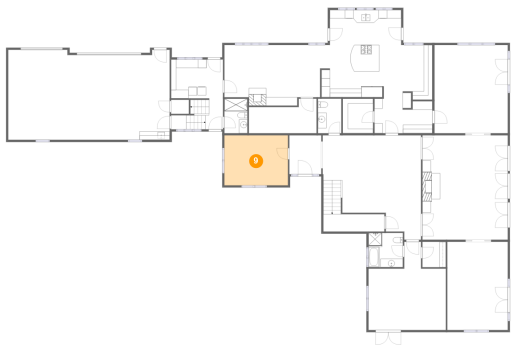


Max Dimensions: 14'2" x 20'8"  
Calculated Area: 293 sq. ft  
Included: Yes

Heated: Yes  
Finished: Yes  
Enclosed: Yes  
Contiguous: Yes  
Permitted: Yes  
Wet space: No  
Addition: No  
Conversion: No

5405 Vineyard Drive, Paso Robles, San Luis Obispo County,  
California, United States, 93446

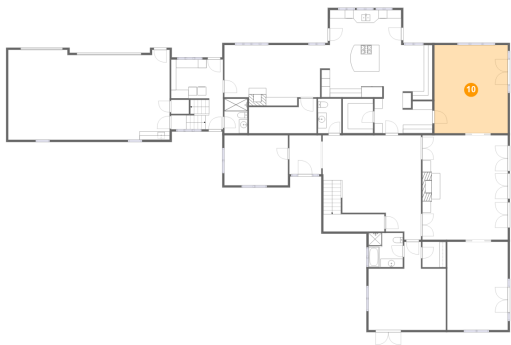
9 Floor 1 - Office



Max Dimensions: 14'11" x 11'9"  
Calculated Area: 175 sq. ft  
Included: Yes

Heated: Yes  
Finished: Yes  
Enclosed: Yes  
Contiguous: Yes  
Permitted: Yes  
Wet space: No  
Addition: No  
Conversion: No

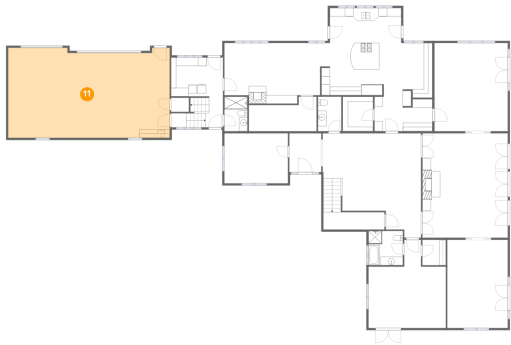
10 Floor 1 - Dining Room



Max Dimensions: 17'2" x 20'8"  
Calculated Area: 355 sq. ft  
Included: Yes

Heated: Yes  
Finished: Yes  
Enclosed: Yes  
Contiguous: Yes  
Permitted: Yes  
Wet space: No  
Addition: No  
Conversion: No

11 Floor 1 - Garage

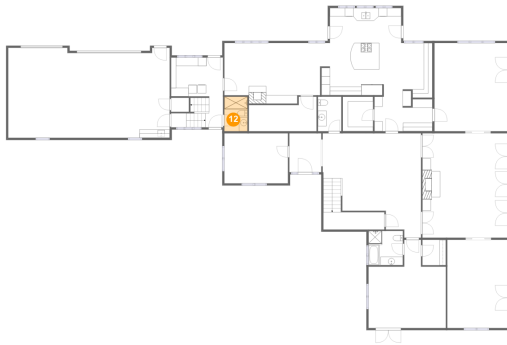


Max Dimensions: 37'11" x 21'1"  
Calculated Area: 775 sq. ft  
Included: No

Heated: No  
Finished: No  
Enclosed: Yes  
Contiguous: Yes  
Permitted: Yes  
Wet space: No  
Addition: No  
Conversion: No

5405 Vineyard Drive, Paso Robles, San Luis Obispo County,  
California, United States, 93446

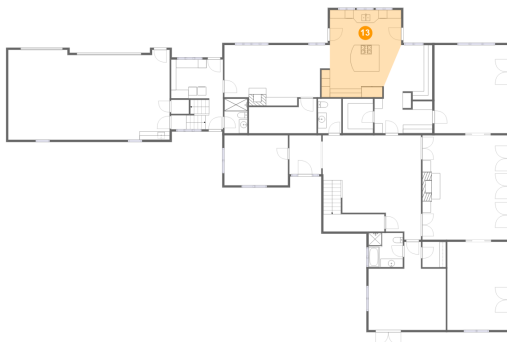
## 12 Floor 1 - Bath



Max Dimensions: 5'5" x 8'1"  
Calculated Area: 44 sq. ft  
Included: Yes

Heated: Yes  
Finished: Yes  
Enclosed: Yes  
Contiguous: Yes  
Permitted: Yes  
Wet space: Yes  
Addition: No  
Conversion: No

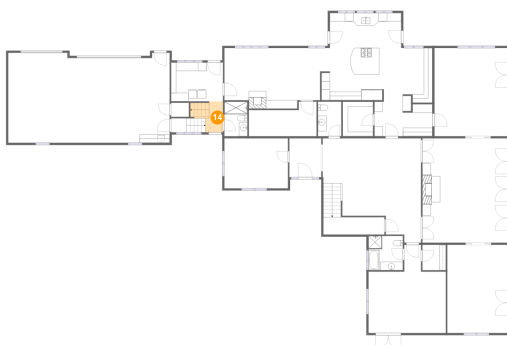
## 13 Floor 1 - Kitchen



Max Dimensions: 16'9" x 20'6"  
Calculated Area: 324 sq. ft  
Included: Yes

Heated: Yes  
Finished: Yes  
Enclosed: Yes  
Contiguous: Yes  
Permitted: Yes  
Wet space: No  
Addition: No  
Conversion: No

## 14 Floor 1 - Entry

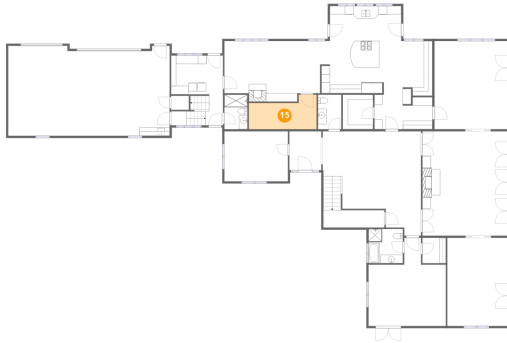


Max Dimensions: 4'1" x 7'3"  
Calculated Area: 42 sq. ft  
Included: Yes

Heated: Yes  
Finished: Yes  
Enclosed: Yes  
Contiguous: Yes  
Permitted: Yes  
Wet space: No  
Addition: No  
Conversion: No

5405 Vineyard Drive, Paso Robles, San Luis Obispo County,  
California, United States, 93446

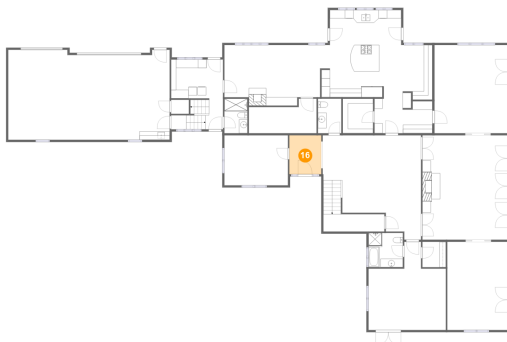
## 15 Floor 1 - Room



Max Dimensions: 15'11" x 8'1"  
Calculated Area: 105 sq. ft  
Included: Yes

Heated: Yes  
Finished: Yes  
Enclosed: Yes  
Contiguous: Yes  
Permitted: Yes  
Wet space: No  
Addition: No  
Conversion: No

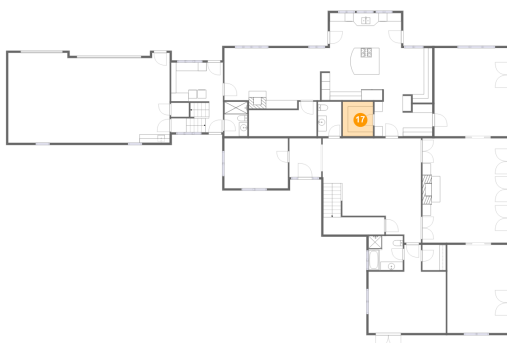
## 16 Floor 1 - Foyer



Max Dimensions: 7'6" x 9'1"  
Calculated Area: 68 sq. ft  
Included: Yes

Heated: Yes  
Finished: Yes  
Enclosed: Yes  
Contiguous: Yes  
Permitted: Yes  
Wet space: No  
Addition: No  
Conversion: No

## 17 Floor 1 - Pantry

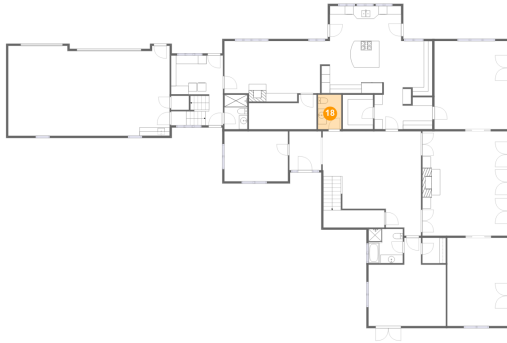


Max Dimensions: 7'1" x 8'1"  
Calculated Area: 58 sq. ft  
Included: Yes

Heated: Yes  
Finished: Yes  
Enclosed: Yes  
Contiguous: Yes  
Permitted: Yes  
Wet space: No  
Addition: No  
Conversion: No

5405 Vineyard Drive, Paso Robles, San Luis Obispo County,  
California, United States, 93446

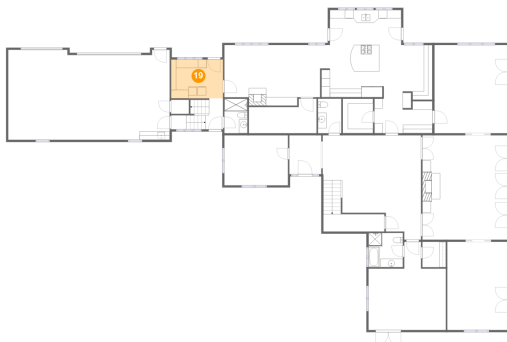
### 18 Floor 1 - WC



Max Dimensions: 5'6" x 8'1"  
Calculated Area: 44 sq. ft  
Included: Yes

Heated: Yes  
Finished: Yes  
Enclosed: Yes  
Contiguous: Yes  
Permitted: Yes  
Wet space: Yes  
Addition: No  
Conversion: No

### 19 Floor 1 - Laundry



Max Dimensions: 12'2" x 9'1"  
Calculated Area: 111 sq. ft  
Included: Yes

Heated: Yes  
Finished: Yes  
Enclosed: Yes  
Contiguous: Yes  
Permitted: Yes  
Wet space: No  
Addition: No  
Conversion: No

### 20 Floor 1 - W.I.C.

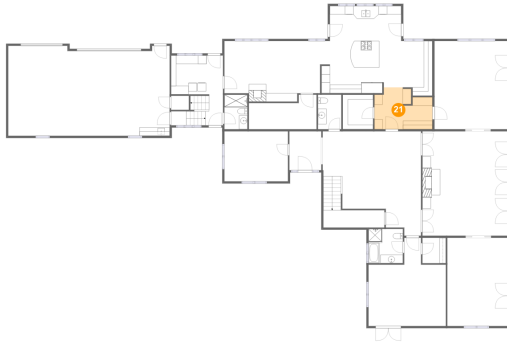


Max Dimensions: 5'6" x 5'11"  
Calculated Area: 33 sq. ft  
Included: Yes

Heated: Yes  
Finished: Yes  
Enclosed: Yes  
Contiguous: Yes  
Permitted: Yes  
Wet space: No  
Addition: No  
Conversion: No

5405 Vineyard Drive, Paso Robles, San Luis Obispo County,  
California, United States, 93446

## 21 Floor 1 - Hall



Max Dimensions: 13'7" x 8'1"  
Calculated Area: 116 sq. ft  
Included: Yes

Heated: Yes  
Finished: Yes  
Enclosed: Yes  
Contiguous: Yes  
Permitted: Yes  
Wet space: No  
Addition: No  
Conversion: No

## 22 Floor 2 - Living Room



Max Dimensions: 15'7" x 11'10"  
Calculated Area: 184 sq. ft  
Included: Yes

Heated: Yes  
Finished: Yes  
Enclosed: Yes  
Contiguous: Yes  
Permitted: Yes  
Wet space: No  
Addition: No  
Conversion: No

## 23 Floor 2 - Hall



Max Dimensions: 3'10" x 8'4"  
Calculated Area: 63 sq. ft  
Included: Yes

Heated: Yes  
Finished: Yes  
Enclosed: Yes  
Contiguous: Yes  
Permitted: Yes  
Wet space: No  
Addition: No  
Conversion: No

5405 Vineyard Drive, Paso Robles, San Luis Obispo County,  
California, United States, 93446

## 24 Floor 2 - Open To Below



Max Dimensions: 12'0" x 6'11"  
Calculated Area: 51 sq. ft  
Included: No

Heated: No  
Finished: No  
Enclosed: No  
Contiguous: Yes  
Permitted: No  
Wet space: No  
Addition: No  
Conversion: No

## 25 Floor 2 - Bath



Max Dimensions: 9'4" x 6'5"  
Calculated Area: 60 sq. ft  
Included: Yes

Heated: Yes  
Finished: Yes  
Enclosed: Yes  
Contiguous: Yes  
Permitted: Yes  
Wet space: Yes  
Addition: No  
Conversion: No

## 26 Floor 2 - Primary Bedroom



Max Dimensions: 18'1" x 17'9"  
Calculated Area: 323 sq. ft  
Included: Yes

Heated: Yes  
Finished: Yes  
Enclosed: Yes  
Contiguous: Yes  
Permitted: Yes  
Wet space: No  
Addition: No  
Conversion: No



5405 Vineyard Drive, Paso Robles, San Luis Obispo County,  
California, United States, 93446

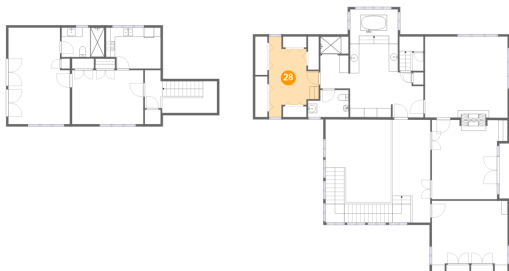
## 27 Floor 2 - Open To Below



Max Dimensions: 14'4" x 10'6"  
Calculated Area: 226 sq. ft  
Included: No

Heated: No  
Finished: No  
Enclosed: No  
Contiguous: Yes  
Permitted: No  
Wet space: No  
Addition: No  
Conversion: No

## 28 Floor 2 - W.I.C.



Max Dimensions: 10'11" x 17'7"  
Calculated Area: 131 sq. ft  
Included: Yes

Heated: Yes  
Finished: Yes  
Enclosed: Yes  
Contiguous: Yes  
Permitted: Yes  
Wet space: No  
Addition: No  
Conversion: No

## 29 Floor 2 - Primary Bath



Max Dimensions: 22'7" x 23'7"  
Calculated Area: 363 sq. ft  
Included: Yes

Heated: Yes  
Finished: Yes  
Enclosed: Yes  
Contiguous: Yes  
Permitted: Yes  
Wet space: Yes  
Addition: No  
Conversion: No

5405 Vineyard Drive, Paso Robles, San Luis Obispo County,  
California, United States, 93446

### 30 Floor 2 - Hall



Max Dimensions: 8'3" x 22'6"  
Calculated Area: 290 sq. ft  
Included: Yes

Heated: Yes  
Finished: Yes  
Enclosed: Yes  
Contiguous: Yes  
Permitted: Yes  
Wet space: No  
Addition: No  
Conversion: No

### 31 Floor 2 - WC



Max Dimensions: 8'10" x 5'11"  
Calculated Area: 46 sq. ft  
Included: Yes

Heated: Yes  
Finished: Yes  
Enclosed: Yes  
Contiguous: Yes  
Permitted: Yes  
Wet space: Yes  
Addition: No  
Conversion: No

### 32 Floor 2 - Bedroom



Max Dimensions: 16'7" x 15'6"  
Calculated Area: 237 sq. ft  
Included: Yes

Heated: Yes  
Finished: Yes  
Enclosed: Yes  
Contiguous: Yes  
Permitted: Yes  
Wet space: No  
Addition: No  
Conversion: No

5405 Vineyard Drive, Paso Robles, San Luis Obispo County,  
California, United States, 93446

### 33 Floor 2 - Eat-in Kitchen



Max Dimensions: 11'11" x 9'0"  
Calculated Area: 101 sq. ft  
Included: Yes

Heated: Yes  
Finished: Yes  
Enclosed: Yes  
Contiguous: Yes  
Permitted: Yes  
Wet space: No  
Addition: No  
Conversion: No

### 34 Floor 2 - Sitting Room



Max Dimensions: 16'7" x 17'4"  
Calculated Area: 257 sq. ft  
Included: Yes

Heated: Yes  
Finished: Yes  
Enclosed: Yes  
Contiguous: Yes  
Permitted: Yes  
Wet space: No  
Addition: No  
Conversion: No

### 35 Floor 2 - Bedroom

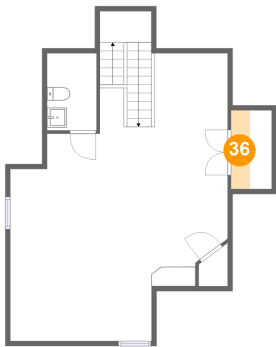


Max Dimensions: 13'5" x 21'1"  
Calculated Area: 263 sq. ft  
Included: Yes

Heated: Yes  
Finished: Yes  
Enclosed: Yes  
Contiguous: Yes  
Permitted: Yes  
Wet space: No  
Addition: No  
Conversion: No

5405 Vineyard Drive, Paso Robles, San Luis Obispo County,  
California, United States, 93446

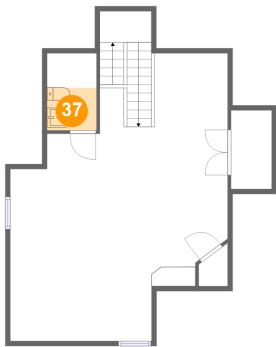
36 Floor 3 - W.I.C.



Max Dimensions: 4'2" x 8'0"  
Calculated Area: 16 sq. ft  
Included: Yes

Heated: Yes  
Finished: Yes  
Enclosed: Yes  
Contiguous: Yes  
Permitted: Yes  
Wet space: No  
Addition: No  
Conversion: No

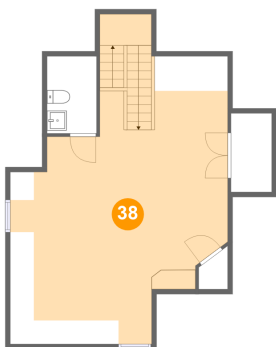
37 Floor 3 - WC



Max Dimensions: 5'0" x 7'10"  
Calculated Area: 22 sq. ft  
Included: Yes

Heated: Yes  
Finished: Yes  
Enclosed: Yes  
Contiguous: Yes  
Permitted: Yes  
Wet space: Yes  
Addition: No  
Conversion: No

38 Floor 3 - Bedroom



Max Dimensions: 22'2" x 21'9"  
Calculated Area: 446 sq. ft  
Included: Yes

Heated: Yes  
Finished: Yes  
Enclosed: Yes  
Contiguous: Yes  
Permitted: Yes  
Wet space: No  
Addition: No  
Conversion: No