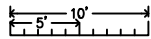
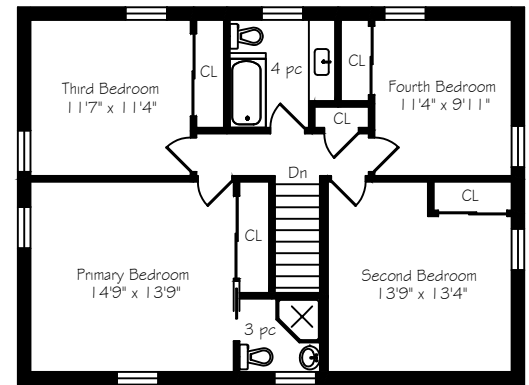
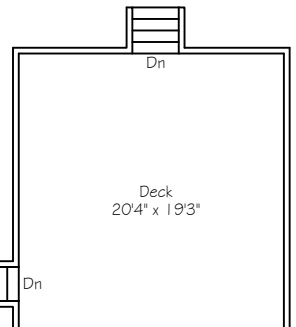
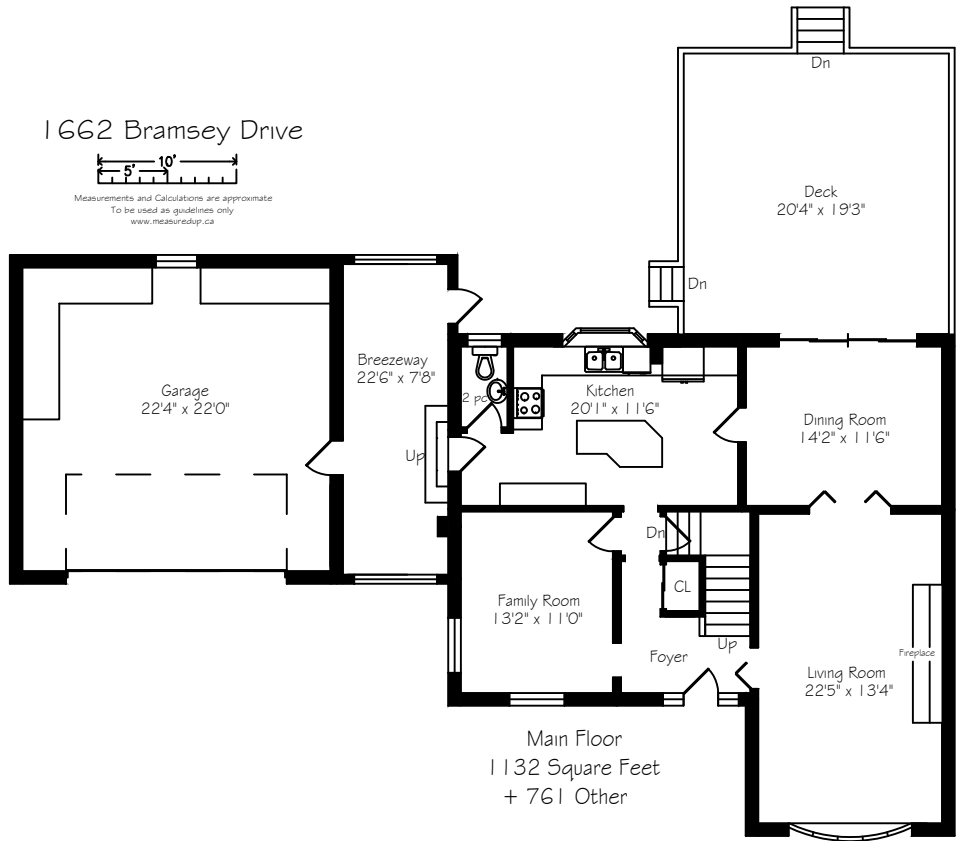
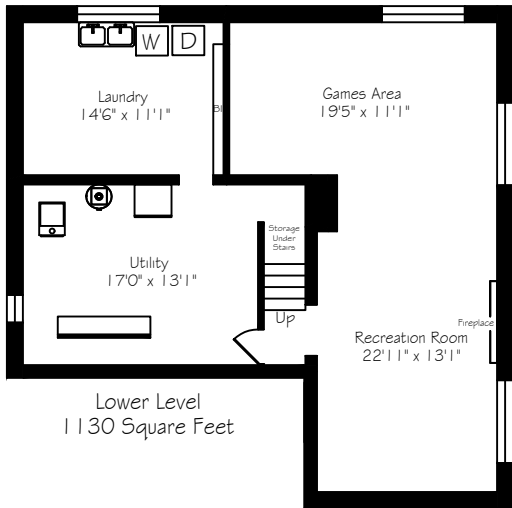


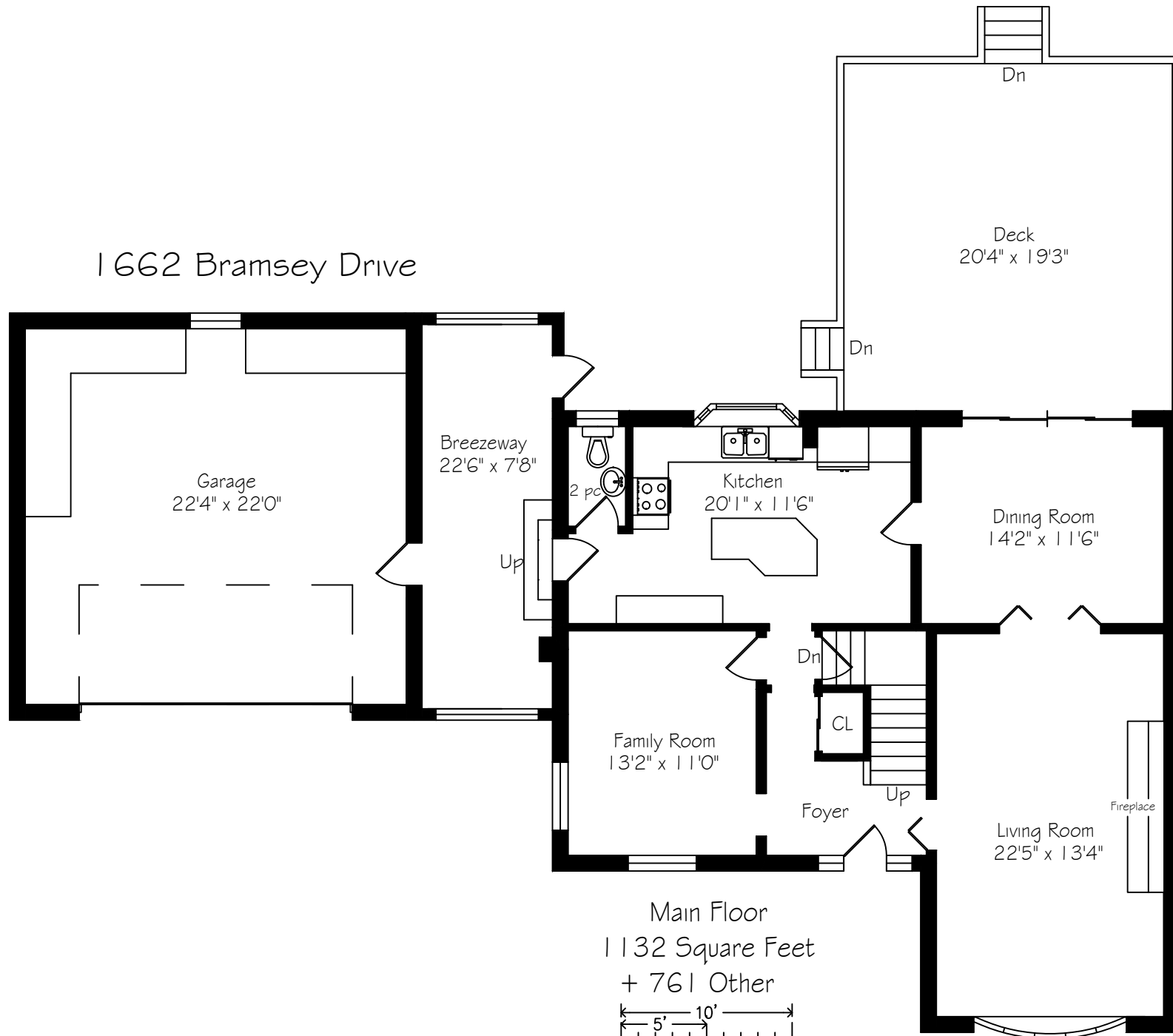
1662 Bramsey Drive



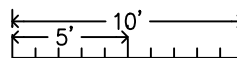
Measurements and Calculations are approximate
To be used as guidelines only
www.measuresdjp.ca



1662 Bramsey Drive

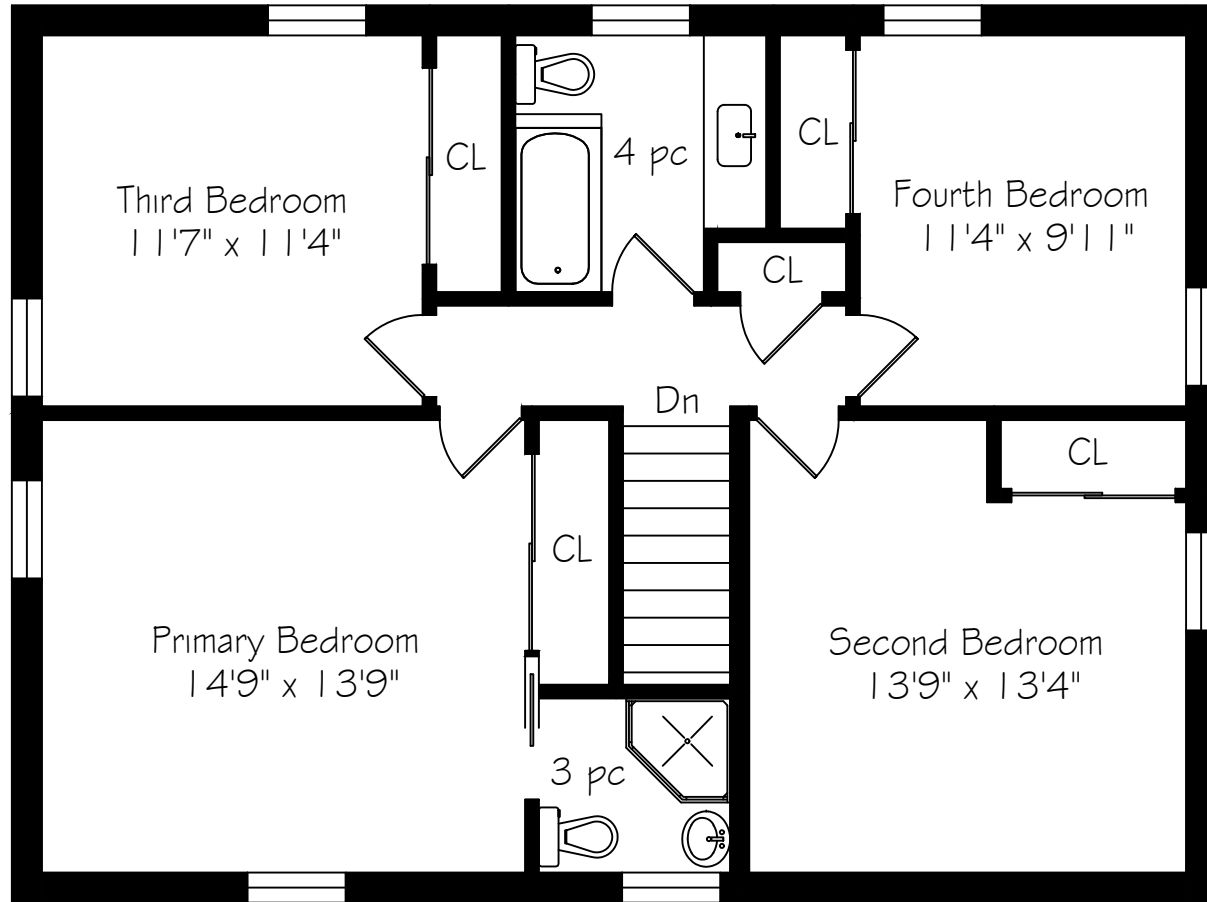


Main Floor
1132 Square Feet
+ 761 Other

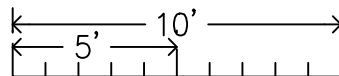


Measurements and Calculations are approximate
To be used as guidelines only
www.measuredup.ca

1662 Bramsey Drive

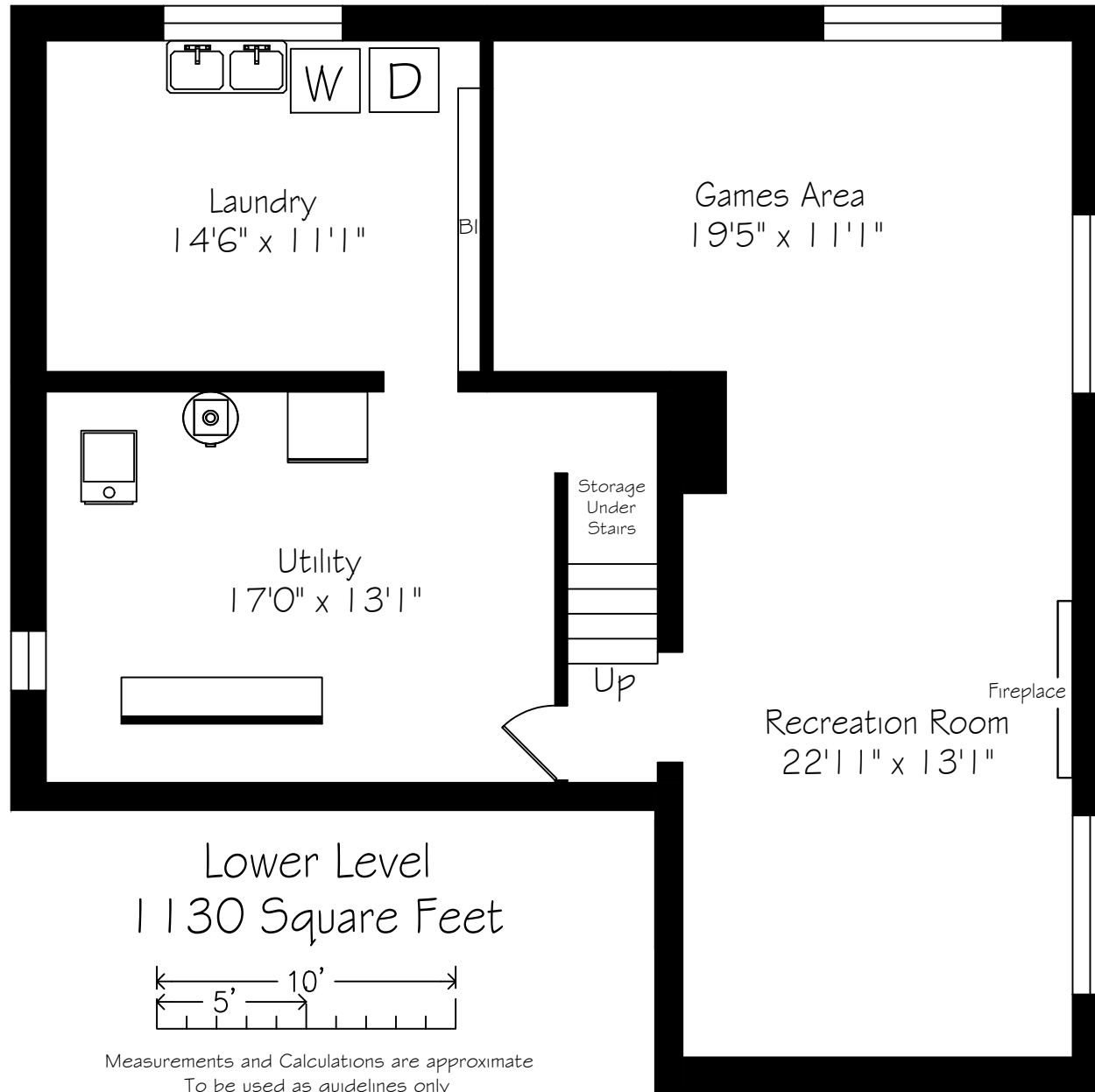


Second Floor
1002 Square Feet

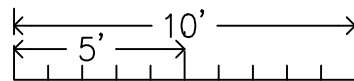


Measurements and Calculations are approximate
To be used as guidelines only
www.measuredup.ca

1662 Bramsey Drive



Lower Level
1130 Square Feet



Measurements and Calculations are approximate
To be used as guidelines only
www.measuredup.ca

1662 Bramsey Drive Metrics Conversion

Measurements and Calculations are approximate

To be used as guidelines only

	IMPERIAL			METRIC			CH
Main Floor	1132	sf		105	sqm		8'2"
Foyer	9'	7"	x 9' 5"	2.92	x 2.87		
Kitchen	20'	1"	x 11' 6"	6.12	x 3.51		
Living Room	22'	5"	x 13' 4"	6.83	x 4.06		
Dining Room	14'	2"	x 11' 6"	4.32	x 3.51		
Family Room	13'	2"	x 11' 0"	4.01	x 3.35		
Second Floor	1002	sf		93	sqm		7'9"
Primary Bedroom	14'	9"	x 13' 9"	4.50	x 4.19		
Second Bedroom	13'	9"	x 13' 4"	4.19	x 4.06		
Third Bedroom	11'	7"	x 11' 4"	3.53	x 3.45		
Fourth Bedroom	11'	4"	x 9' 11"	3.45	x 3.02		
Lower Level	1130	sf		105	sqm		7'6"
Recreation Room	22'	11"	x 13' 1"	6.99	x 3.99		
Games Area	19'	5"	x 11' 1"	5.92	x 3.38		
Utility Room	17'	0"	x 13' 1"	5.18	x 3.99		
Laundry Room	14'	6"	x 11' 1"	4.42	x 3.38		
Total Square Footage	3264	sf		303	sqm		
Other	761	sf		71	sqm		
Garage	22'	4"	x 22' 0"	6.81	x 6.71		
Breezeway	22'	6"	x 7' 8"	6.86	x 2.34		
Total Area Measured	4025	sf		374	sqm		December 18, 2024