

# 313 Warm Wind Drive, Clayton, Johnston County, North Carolina, United States, 27527

Gross Living Area: 1952 sq. ft



Space	Area (sq. ft)	Calculation <small>Coordinate Polygon Area Algorithm using inches</small>
FLOOR 1 (Living area)	1952	$-\left((112.7 + 455.8) * (49.2 - 49.2) + (455.8 + 455.8) * (49.2 - 98.5) + (455.8 + 492.8) * (98.5 - 98.5) + (492.8 + 492.8) * (98.5 - 842) + (492.8 + 334) * (842 - 842) + (334 + 334) * (842 - 704.9) + (334 + 271.5) * (704.9 - 704.9) + (271.5 + 271.5) * (704.9 - 698.9) + (271.5 + 265.5) * (698.9 - 698.9) + (265.5 + 265.5) * (698.9 - 545.5) + (265.5 + 9.5) * (545.5 - 545.5) + (9.5 + 9.5) * (545.5 - 193.4) + (9.5 + 112.7) * (193.4 - 193.4) + (112.7 + 112.7) * (193.4 - 49.2)\right) * 0.5 * 0.00694$
GARAGE	481	$-\left((265.5 + 265.5) * (545.5 - 698.9) + (265.5 + 271.5) * (698.9 - 698.9) + (271.5 + 271.5) * (698.9 - \right.$

# 313 Warm Wind Drive, Clayton, Johnston County, North Carolina, United States, 27527

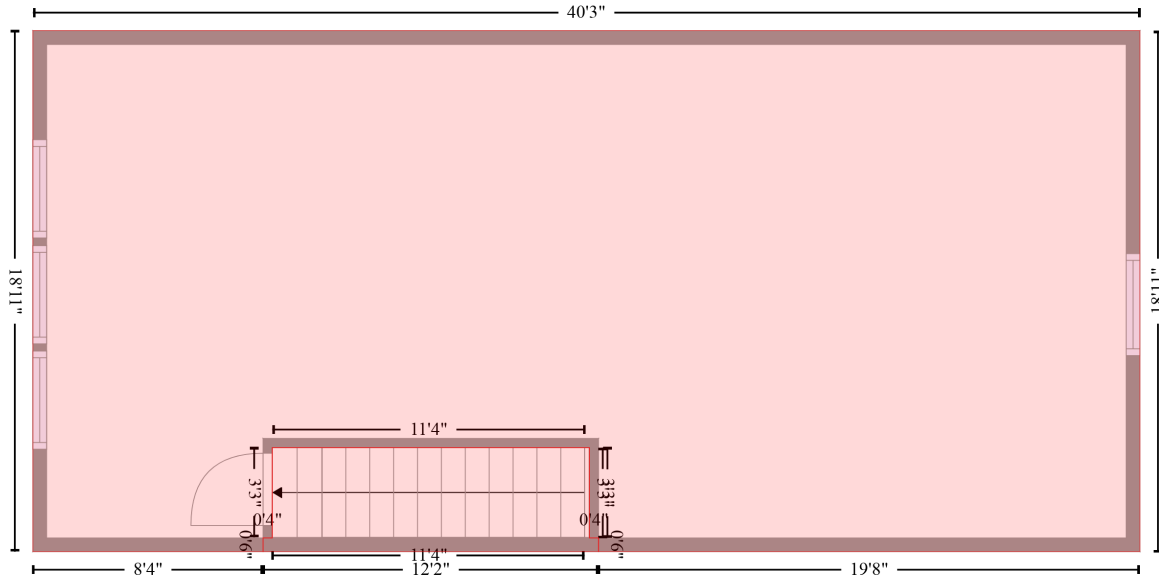
Gross Living Area: 1952 sq. ft

Space	Area (sq. ft)	Calculation <small>Coordinate Polygon Area Algorithm using inches</small>
(Non-living area)		$813.6 + (271.5 + 9.5) * (813.6 - 813.6) + (9.5 + 9.5) * (813.6 - 545.5) + (9.5 + 265.5) * (545.5 - 545.5) * 0.5 * 0.00694$
SCREENED PORCH (Non-living area)	103	$-((9.5 + 112.7) * (49.2 - 49.2) + (112.7 + 112.7) * (49.2 - 193.4) + (112.7 + 9.5) * (193.4 - 193.4) + (9.5 + 9.5) * (193.4 - 49.2)) * 0.5 * 0.00694$
PORCH (Non-living area)	198	$-((334 + 334) * (704.9 - 842) + (334 + 492.8) * (842 - 842) + (492.8 + 492.8) * (842 - 927.5) + (492.8 + 262.7) * (927.5 - 927.5) + (262.7 + 262.7) * (927.5 - 813.6) + (262.7 + 271.5) * (813.6 - 813.6) + (271.5 + 271.5) * (813.6 - 704.9) + (271.5 + 334) * (704.9 - 704.9)) * 0.5 * 0.00694$

# 313 Warm Wind Drive, Clayton, Johnston County, North Carolina, United States, 27527

Gross Living Area: 1952 sq. ft

ATTIC (1)  
[AREA: 719]



UNDEFINED (2)  
[AREA: 44]

Space	Area (sq. ft)	Calculation <small>Coordinate Polygon Area Algorithm using inches</small>
ATTIC (Non-living area)	719	$  \begin{aligned}  & -((517.5 + 517.5) * (317.7 - 545) + (517.5 + 281.1) * (545 - 545) + (281.1 + 281.1) * (545 - 539) + \\  & (281.1 + 277.1) * (539 - 539) + (277.1 + 277.1) * (539 - 499.6) + (277.1 + 138.7) * (499.6 - 499.6) \\  & + (138.7 + 138.7) * (499.6 - 539) + (138.7 + 134.7) * (539 - 539) + (134.7 + 134.7) * (539 - 545) + \\  & (134.7 + 34.2) * (545 - 545) + (34.2 + 34.2) * (545 - 317.7) + (34.2 + 517.5) * (317.7 - 317.7)) * \\  & 0.5 * 0.00694  \end{aligned}  $
UNDEFINED (Non-living area)	44	$  \begin{aligned}  & -((277.1 + 277.1) * (499.6 - 539) + (277.1 + 281.1) * (539 - 539) + (281.1 + 281.1) * (539 - 545) + \\  & (281.1 + 134.7) * (545 - 545) + (134.7 + 134.7) * (545 - 539) + (134.7 + 138.7) * (539 - 539) + \\  & (138.7 + 138.7) * (539 - 499.6) + (138.7 + 277.1) * (499.6 - 499.6)) * 0.5 * 0.00694  \end{aligned}  $