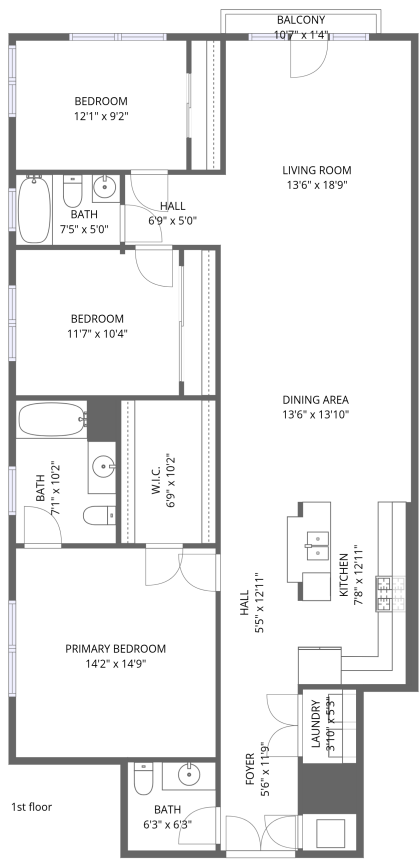


Home data report

9315 Alcott St #201, Los Angeles, CA, US



Total Area: 1481 sq. ft

1st Floor: 1481 sq. ft


Excluded: Undefined 22 sq. ft, Balcony 14 sq. ft, Walls: 0 sq. ft

Property summary

 **1** Floors

 **3** Bedrooms

 **2** Bathrooms

 **1** Half baths

Home data report

9315 Alcott St #201,Los Angeles,CA,US



Room dimensions

Floor 1 Total:1481sqft Excluded: 36sqft

#		Dimensions	sqft	Counted as living area
1	Bath	7'5" x 5'0"	37 sq. ft	Yes
2	Foyer	5'6" x 11'9"	64 sq. ft	Yes
3	Balcony	10'7" x 1'4"	14 sq. ft	No
4	Laundry	3'10" x 5'3"	20 sq. ft	Yes
5	Bedroom	12'1" x 9'2"	110 sq. ft	Yes
6	W.I.C.	6'9" x 10'2"	68 sq. ft	Yes
7	Dining Area	13'6" x 13'10"	187 sq. ft	Yes
8	Hall	6'9" x 5'0"	34 sq. ft	Yes
9	Bedroom	11'7" x 10'4"	119 sq. ft	Yes
10	Primary Bedroom	14'2" x 14'9"	209 sq. ft	Yes
11	Hall	5'5" x 12'11"	71 sq. ft	Yes

Home data report

9315 Alcott St #201, Los Angeles, CA, US

#		Dimensions	sqft	Counted as living area
12	Bath	7'1" x 10'2"	72 sq. ft	Yes
13	Bath	6'3" x 6'3"	39 sq. ft	Yes
14	Kitchen	7'8" x 12'11"	102 sq. ft	Yes
15	Living Room	13'6" x 18'9"	249 sq. ft	Yes

1 Floor 1 - Bath



Dimensions: 7'5" x 5'0"
Area: 37 sq. ft
Counted as living area: Yes

Heated: Yes
Finished: Yes
Enclosed: Yes
Contiguous: Yes
Permitted: Yes
Wet space: Yes
Addition: No
Conversion: No

2 Floor 1 - Foyer



Dimensions: 5'6" x 11'9"
Area: 64 sq. ft
Counted as living area: Yes

Heated: Yes
Finished: Yes
Enclosed: Yes
Contiguous: Yes
Permitted: Yes
Wet space: No
Addition: No
Conversion: No

3 Floor 1 - Balcony



Dimensions: 10'7" x 1'4"
Area: 14 sq. ft
Counted as living area: No

Heated: No
Finished: No
Enclosed: No
Contiguous: Yes
Permitted: Yes
Wet space: No
Addition: No
Conversion: No

4 Floor 1 - Laundry



Dimensions: 3'10" x 5'3"
Area: 20 sq. ft
Counted as living area: Yes

Heated: Yes
Finished: Yes
Enclosed: Yes
Contiguous: Yes
Permitted: Yes
Wet space: No
Addition: No
Conversion: No

5 Floor 1 - Bedroom



Dimensions: 12'1" x 9'2"
Area: 110 sq. ft
Counted as living area: Yes

Heated: Yes
Finished: Yes
Enclosed: Yes
Contiguous: Yes
Permitted: Yes
Wet space: No
Addition: No
Conversion: No

6 Floor 1 - W.I.C.



Dimensions: 6'9" x 10'2"
Area: 68 sq. ft
Counted as living area: Yes

Heated: Yes
Finished: Yes
Enclosed: Yes
Contiguous: Yes
Permitted: Yes
Wet space: No
Addition: No
Conversion: No

7 Floor 1 - Dining Area



Dimensions: 13'6" x 13'10"
Area: 187 sq. ft
Counted as living area: Yes

Heated: Yes
Finished: Yes
Enclosed: Yes
Contiguous: Yes
Permitted: Yes
Wet space: No
Addition: No
Conversion: No

8 Floor 1 - Hall



Dimensions: 6'9" x 5'0"
Area: 34 sq. ft
Counted as living area: Yes

Heated: Yes
Finished: Yes
Enclosed: Yes
Contiguous: Yes
Permitted: Yes
Wet space: No
Addition: No
Conversion: No

9 Floor 1 - Bedroom



Dimensions: 11'7" x 10'4"
Area: 119 sq. ft
Counted as living area: Yes

Heated: Yes
Finished: Yes
Enclosed: Yes
Contiguous: Yes
Permitted: Yes
Wet space: No
Addition: No
Conversion: No

10 Floor 1 - Primary Bedroom



Dimensions: 14'2" x 14'9"
Area: 209 sq. ft
Counted as living area: Yes

Heated: Yes
Finished: Yes
Enclosed: Yes
Contiguous: Yes
Permitted: Yes
Wet space: No
Addition: No
Conversion: No

11 Floor 1 - Hall



Dimensions: 5'5" x 12'11"
Area: 71 sq. ft
Counted as living area: Yes

Heated: Yes
Finished: Yes
Enclosed: Yes
Contiguous: Yes
Permitted: Yes
Wet space: No
Addition: No
Conversion: No

12 Floor 1 - Bath



Dimensions: 7'1" x 10'2"
Area: 72 sq. ft
Counted as living area: Yes

Heated: Yes
Finished: Yes
Enclosed: Yes
Contiguous: Yes
Permitted: Yes
Wet space: Yes
Addition: No
Conversion: No

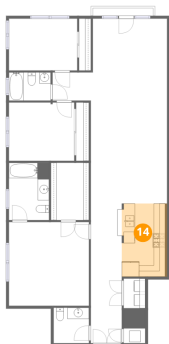
13 Floor 1 - Bath



Dimensions: 6'3" x 6'3"
Area: 39 sq. ft
Counted as living area: Yes

Heated: Yes
Finished: Yes
Enclosed: Yes
Contiguous: Yes
Permitted: Yes
Wet space: Yes
Addition: No
Conversion: No

14 Floor 1 - Kitchen



Dimensions: 7'8" x 12'11"
Area: 102 sq. ft
Counted as living area: Yes

Heated: Yes
Finished: Yes
Enclosed: Yes
Contiguous: Yes
Permitted: Yes
Wet space: No
Addition: No
Conversion: No

15 Floor 1 - Living Room



Dimensions: 13'6" x 18'9"
Area: 249 sq. ft
Counted as living area: Yes

Heated: Yes
Finished: Yes
Enclosed: Yes
Contiguous: Yes
Permitted: Yes
Wet space: No
Addition: No
Conversion: No