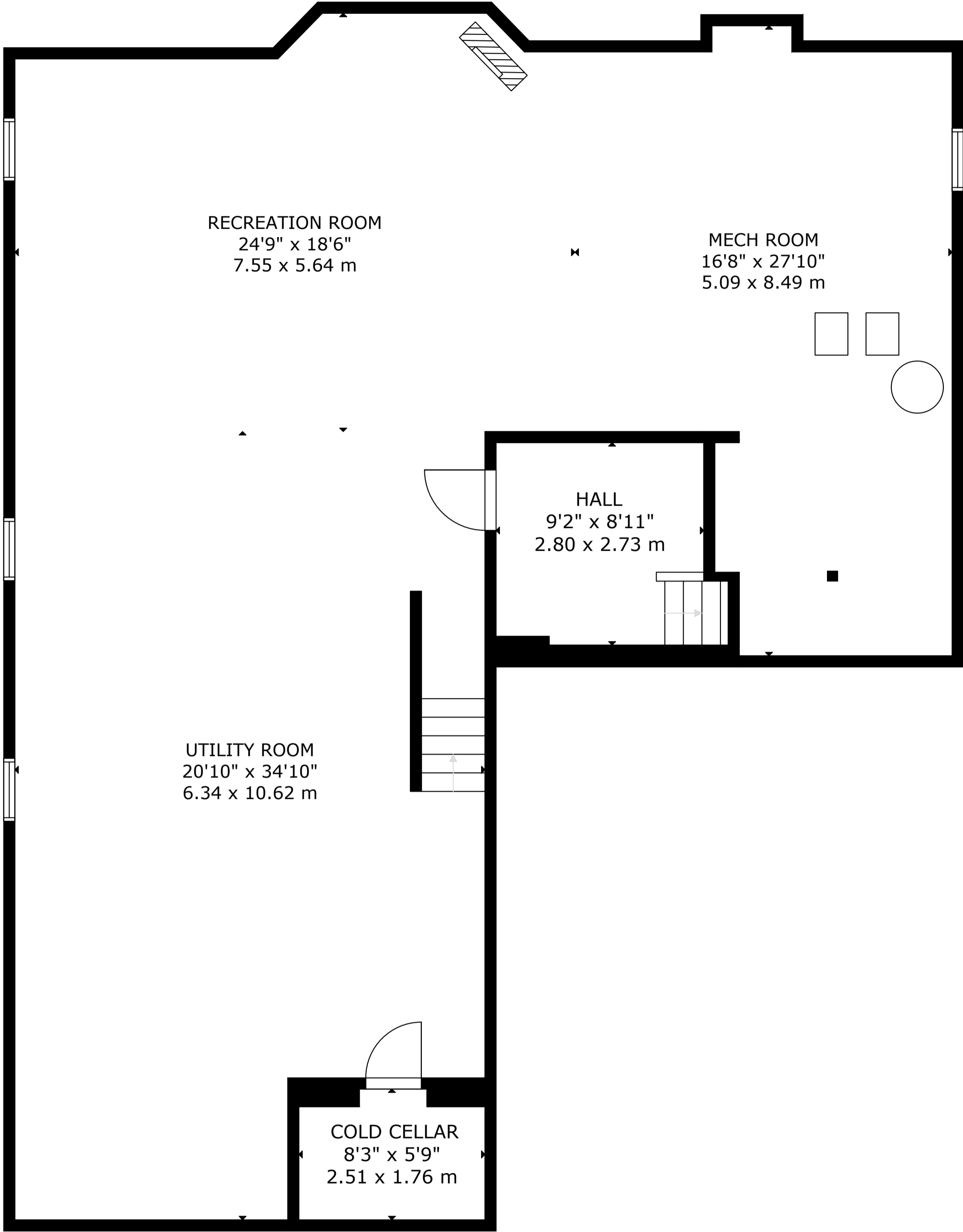
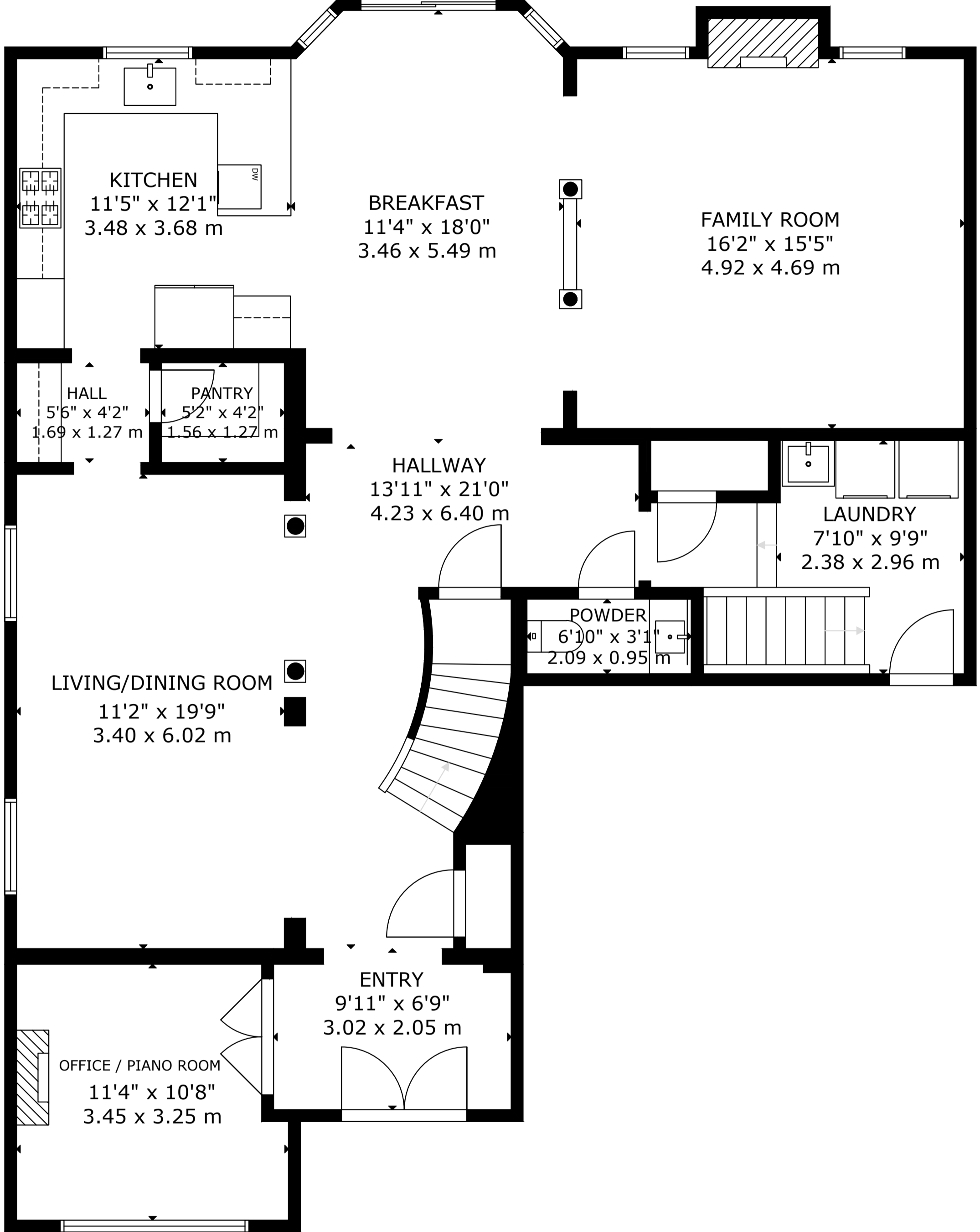


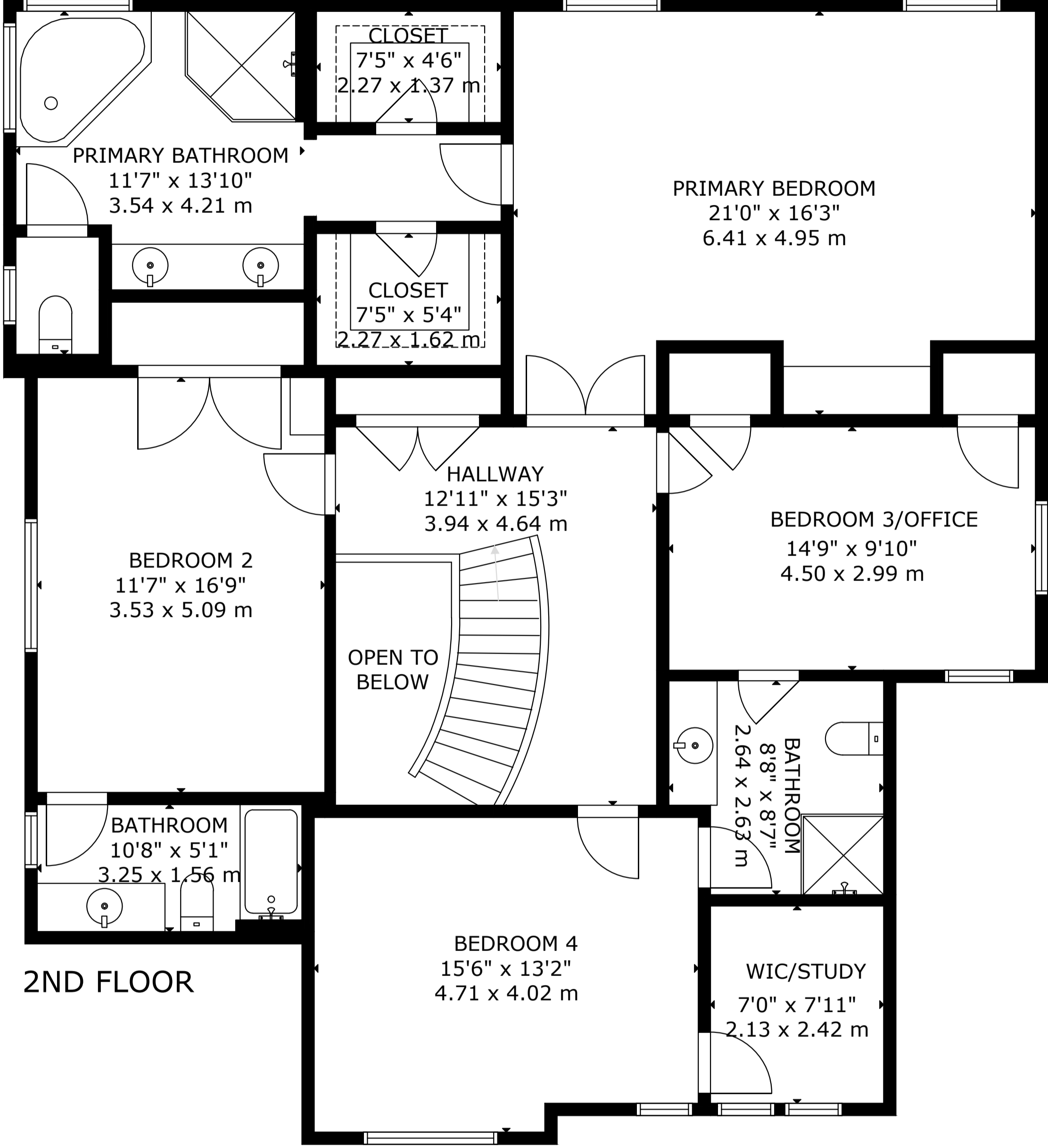
54 Gentle Fox Dr, Caledon, ON L7C 3T4, Canada



BASEMENT



MAIN FLOOR



2ND FLOOR

GROSS INTERNAL AREA
 TOTAL ABOVE GRADE: 297 m²/ 3,204 sq.ft
 BASEMENT: 153 m²/1,642 sq.ft, MAIN FLOOR: 142 m²/1,530 sq.ft, 2ND FLOOR: 155 m²/1,674 sq.ft
 SIZE AND DIMENSIONS ARE APPROXIMATE, ACTUAL MAY VARY