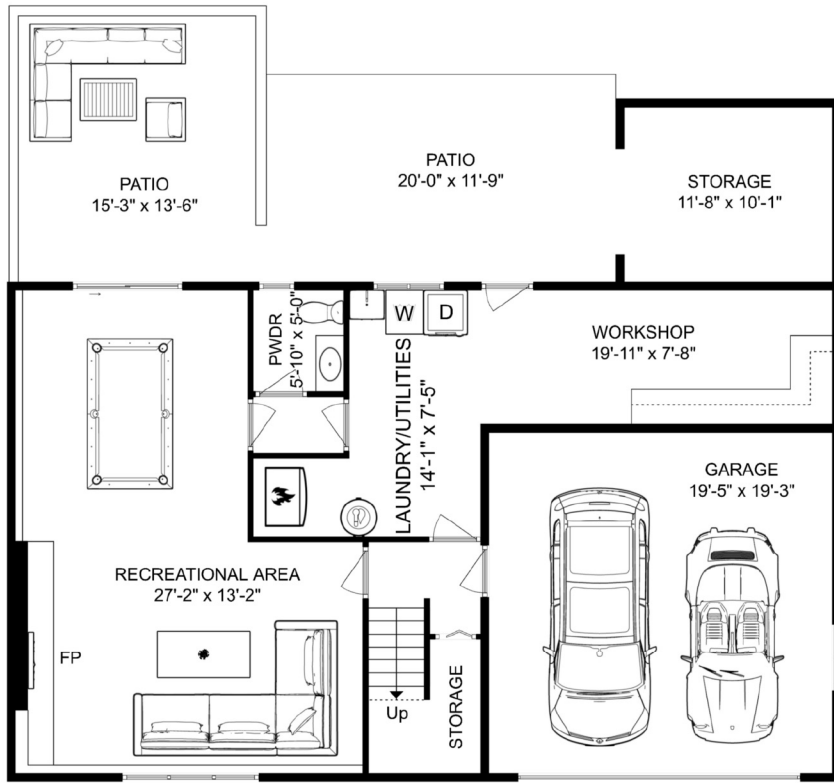


# 4347 Ruth Crescent North Vancouver

INTERIOR LIVING SPACE	(sq.ft.)
Main Floor	1,373
Lower Floor	692

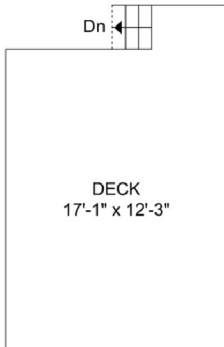
(UNFINISHED)	
Laundry/Workshop	248
Total Area	2,313

AUXILIARY	
Deck	209
Patio Total	441
Storage	118
Garage	374
Combined Total	3,455

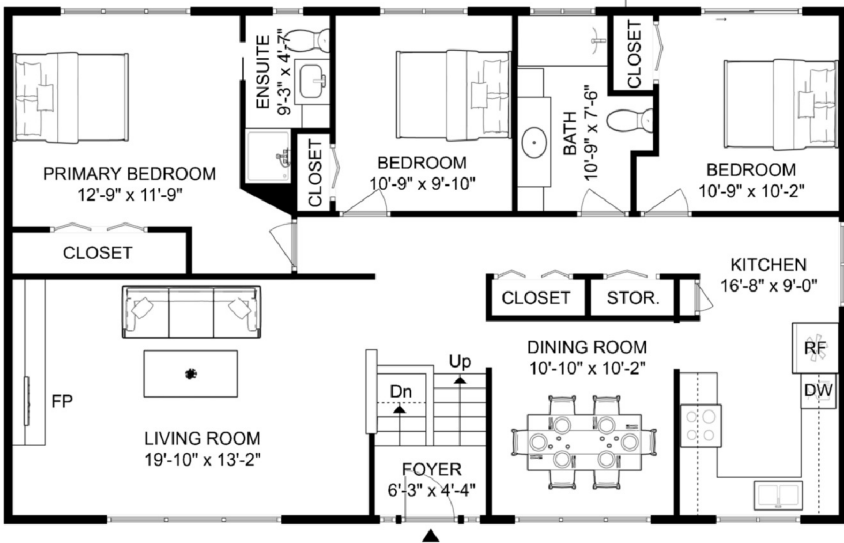


3 bed
 2½ bath
 2 parking

**LOWER FLOOR**  
940 sq.ft. | Ceiling Height: 8'-0"



**MAIN FLOOR**  
1,373 sq.ft. | Ceiling Height: 8'-0"



The floor plan is not suitable for architectural/construction and is covered under E&O. All right reserved for Virtualized Studio. User shall not publish and distribute such material and/or incorporate it in other works in any form.

