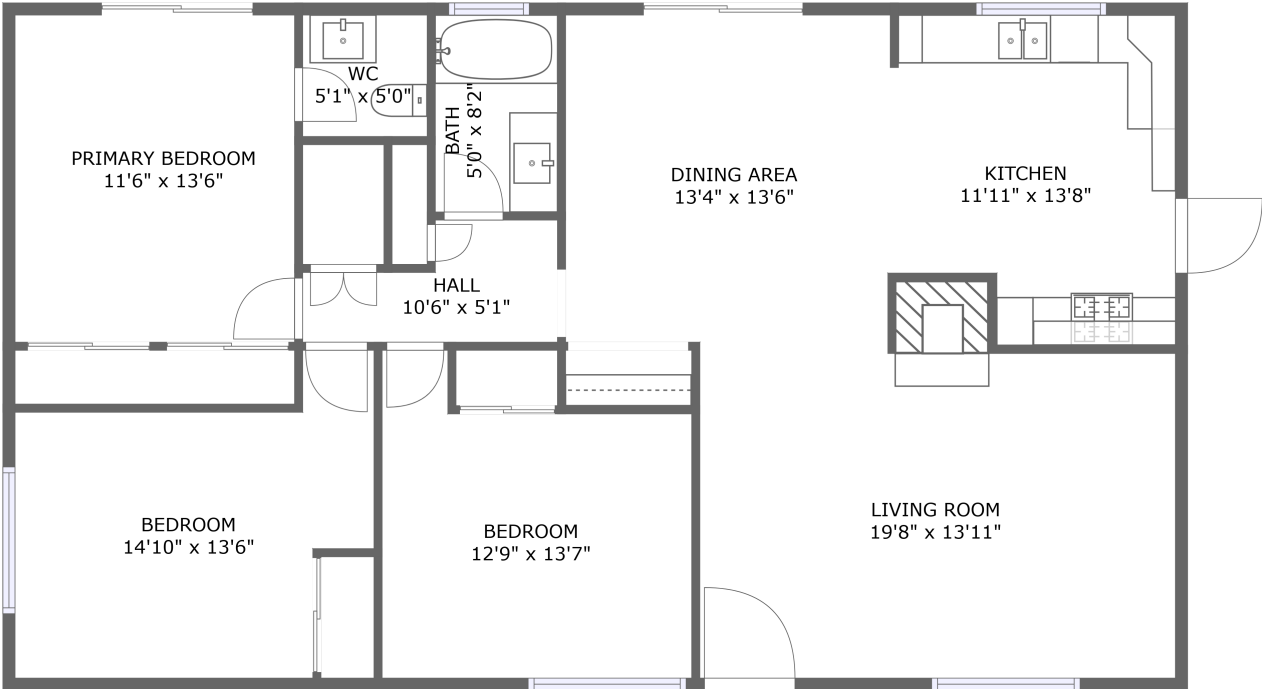




1121 Holguin Street, Desert View, Lancaster, Los Angeles County, California, United States, 93534





FLOOR 1

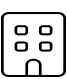
Property summary


**0** Garages


**3** Bedrooms

**1** Bathrooms

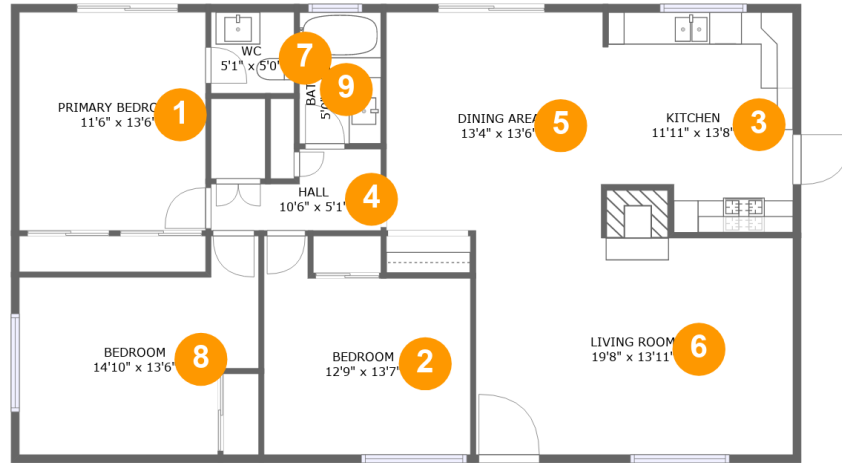
**1** Half baths

**1** Floors

**1,389** Gross living area sqft

**1,389** Total sqft

**1121 Holguin Street, Desert View, Lancaster, Los Angeles County, California, United States, 93534**



## Room dimensions

Floor 1

Total sqft: 1389    Living area: 1389

#		Dimensions	sqft	Counted as living area
1	Primary Bedroom	11'6" x 13'6"	156 sq. ft	Yes
2	Bedroom	12'9" x 13'7"	147 sq. ft	Yes
3	Kitchen	11'11" x 13'8"	148 sq. ft	Yes
4	Hall	10'6" x 5'1"	41 sq. ft	Yes
5	Dining Area	13'4" x 13'6"	180 sq. ft	Yes
6	Living Room	19'8" x 13'11"	279 sq. ft	Yes
7	WC	5'1" x 5'0"	26 sq. ft	Yes
8	Bedroom	14'10" x 13'6"	157 sq. ft	Yes
9	Bath	5'0" x 8'2"	41 sq. ft	Yes

**1121 Holguin Street, Desert View, Lancaster, Los Angeles County, California, United States, 93534**

## 1 Floor 1 - Primary Bedroom



Dimensions: 11'6" x 13'6"  
Area: 156 sq. ft  
Counted as living area: Yes

Heated: Yes  
Finished: Yes  
Enclosed: Yes  
Contiguous: Yes  
Permitted: Yes  
Wet space: No  
Addition: No  
Conversion: No

## 2 Floor 1 - Bedroom



Dimensions: 12'9" x 13'7"  
Area: 147 sq. ft  
Counted as living area: Yes

Heated: Yes  
Finished: Yes  
Enclosed: Yes  
Contiguous: Yes  
Permitted: Yes  
Wet space: No  
Addition: No  
Conversion: No

**1121 Holguin Street, Desert View, Lancaster, Los Angeles County, California, United States, 93534**

### **3 Floor 1 - Kitchen**



Dimensions: 11'11" x 13'8"  
Area: 148 sq. ft  
Counted as living area: Yes

Heated: Yes  
Finished: Yes  
Enclosed: Yes  
Contiguous: Yes  
Permitted: Yes  
Wet space: No  
Addition: No  
Conversion: No

### **4 Floor 1 - Hall**



Dimensions: 10'6" x 5'1"  
Area: 41 sq. ft  
Counted as living area: Yes

Heated: Yes  
Finished: Yes  
Enclosed: Yes  
Contiguous: Yes  
Permitted: Yes  
Wet space: No  
Addition: No  
Conversion: No

### **5 Floor 1 - Dining Area**



Dimensions: 13'4" x 13'6"  
Area: 180 sq. ft  
Counted as living area: Yes

Heated: Yes  
Finished: Yes  
Enclosed: Yes  
Contiguous: Yes  
Permitted: Yes  
Wet space: No  
Addition: No  
Conversion: No

1121 Holguin Street, Desert View, Lancaster, Los Angeles County, California, United States, 93534

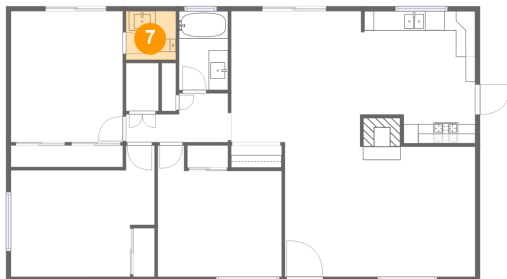
## 6 Floor 1 - Living Room



Dimensions: 19'8" x 13'11"  
Area: 279 sq. ft  
Counted as living area: Yes

Heated: Yes  
Finished: Yes  
Enclosed: Yes  
Contiguous: Yes  
Permitted: Yes  
Wet space: No  
Addition: No  
Conversion: No

## 7 Floor 1 - WC



Dimensions: 5'1" x 5'0"  
Area: 26 sq. ft  
Counted as living area: Yes

Heated: Yes  
Finished: Yes  
Enclosed: Yes  
Contiguous: Yes  
Permitted: Yes  
Wet space: Yes  
Addition: No  
Conversion: No

## 8 Floor 1 - Bedroom



Dimensions: 14'10" x 13'6"  
Area: 157 sq. ft  
Counted as living area: Yes

Heated: Yes  
Finished: Yes  
Enclosed: Yes  
Contiguous: Yes  
Permitted: Yes  
Wet space: No  
Addition: No  
Conversion: No

**1121 Holguin Street, Desert View, Lancaster, Los Angeles County, California, United States, 93534**

## **9 Floor 1 - Bath**



**Dimensions: 5'0" x 8'2"**

**Area: 41 sq. ft**

**Counted as living area: Yes**

**Heated: Yes**

**Finished: Yes**

**Enclosed: Yes**

**Contiguous: Yes**

**Permitted: Yes**

**Wet space: Yes**

**Addition: No**

**Conversion: No**