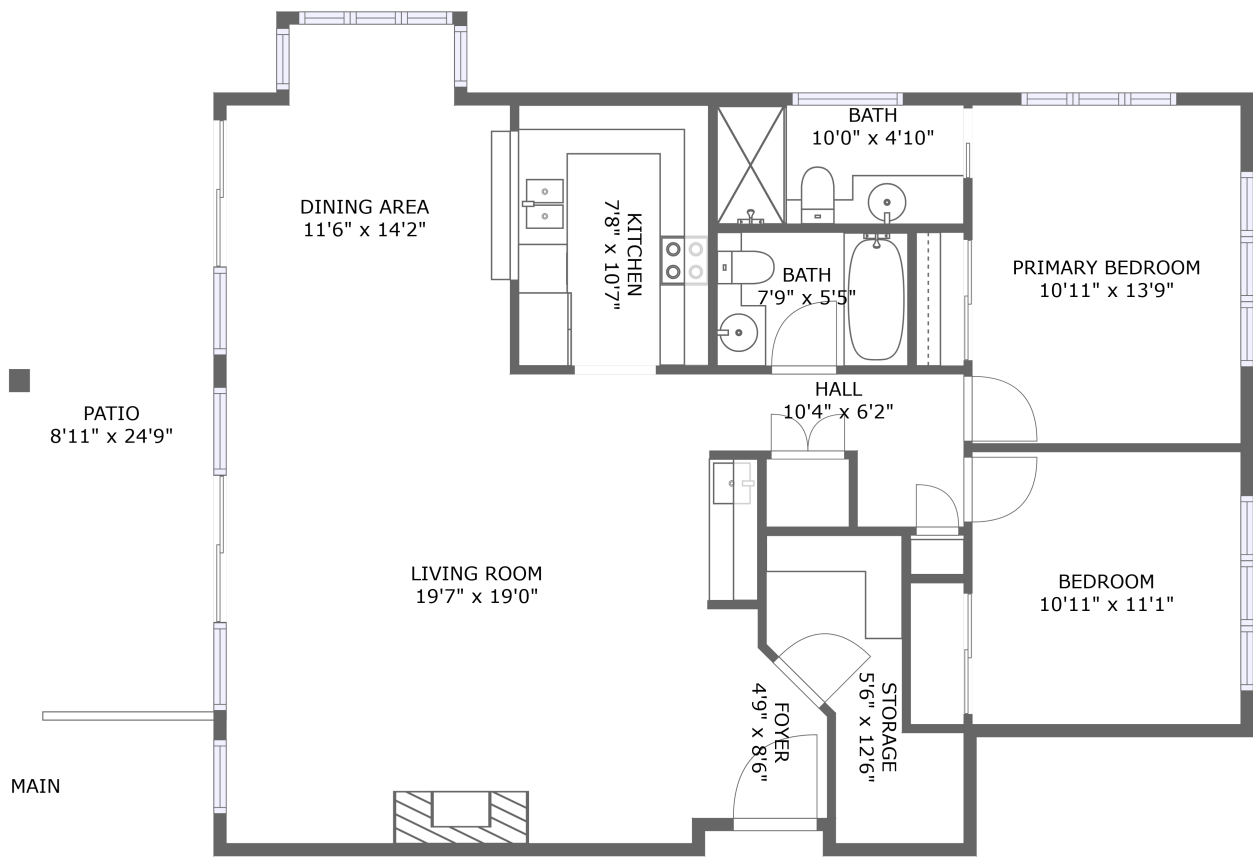


Home report

305 South Point Shore Drive, North Shore, Moneta, Franklin County, Virginia, United States, 24121, 204




Total Area: 1131 sq. ft

Floor 1: 1131 sq. ft

Excluded: Patio 203 sq. ft, Storage 62 sq. ft, Walls: 0 sq. ft

Property summary

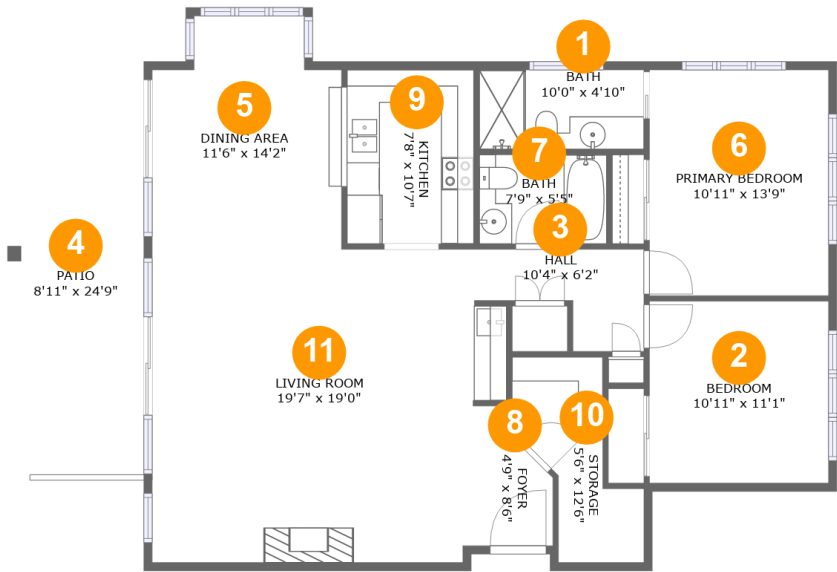
 1 Floors

 2 Bedrooms

 2 Bathrooms

Home report

305 South Point Shore Drive, North Shore, Moneta, Franklin County, Virginia, United States, 24121, 204



Room dimensions

Floor 1 Total:1131sqft Excluded: 265sqft

| #  |                 | Max Dimensions | sqft       | Included |
|----|-----------------|----------------|------------|----------|
| 1  | Bath            | 10'0" x 4'10"  | 48 sq. ft  | Yes      |
| 2  | Bedroom         | 10'11" x 11'1" | 120 sq. ft | Yes      |
| 3  | Hall            | 10'4" x 6'2"   | 45 sq. ft  | Yes      |
| 4  | Patio           | 8'11" x 24'9"  | 203 sq. ft | No       |
| 5  | Dining Area     | 11'6" x 14'2"  | 143 sq. ft | Yes      |
| 6  | Primary Bedroom | 10'11" x 13'9" | 149 sq. ft | Yes      |
| 7  | Bath            | 7'9" x 5'5"    | 42 sq. ft  | Yes      |
| 8  | Foyer           | 4'9" x 8'6"    | 32 sq. ft  | Yes      |
| 9  | Kitchen         | 7'8" x 10'7"   | 88 sq. ft  | Yes      |
| 10 | Storage         | 5'6" x 12'6"   | 61 sq. ft  | No       |
| 11 | Living Room     | 19'7" x 19'0"  | 383 sq. ft | Yes      |

305 South Point Shore Drive, North Shore, Moneta, Franklin  
County, Virginia, United States, 24121, 204

1 Floor 1 - Bath



Max Dimensions: 10'0" x 4'10"  
Calculated Area: 48 sq. ft  
Included: Yes

Heated: Yes  
Finished: Yes  
Enclosed: Yes  
Contiguous: Yes  
Permitted: Yes  
Wet space: Yes  
Addition: No  
Conversion: No

2 Floor 1 - Bedroom



Max Dimensions: 10'11" x 11'1"  
Calculated Area: 120 sq. ft  
Included: Yes

Heated: Yes  
Finished: Yes  
Enclosed: Yes  
Contiguous: Yes  
Permitted: Yes  
Wet space: No  
Addition: No  
Conversion: No

305 South Point Shore Drive, North Shore, Moneta, Franklin  
County, Virginia, United States, 24121, 204

3 Floor 1 - Hall



Max Dimensions: 10'4" x 6'2"  
Calculated Area: 45 sq. ft  
Included: Yes

Heated: Yes  
Finished: Yes  
Enclosed: Yes  
Contiguous: Yes  
Permitted: Yes  
Wet space: No  
Addition: No  
Conversion: No

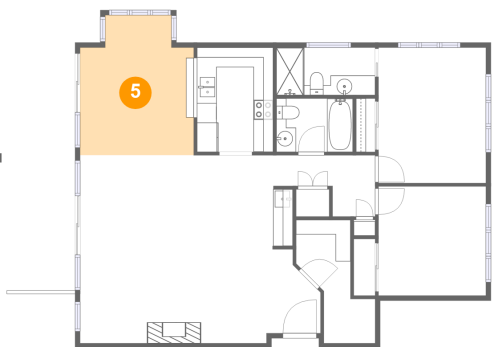
4 Floor 1 - Patio



Max Dimensions: 8'11" x 24'9"  
Calculated Area: 203 sq. ft  
Included: No

Heated: No  
Finished: Yes  
Enclosed: No  
Contiguous: Yes  
Permitted: Yes  
Wet space: No  
Addition: No  
Conversion: No

5 Floor 1 - Dining Area



Max Dimensions: 11'6" x 14'2"  
Calculated Area: 143 sq. ft  
Included: Yes

Heated: Yes  
Finished: Yes  
Enclosed: Yes  
Contiguous: Yes  
Permitted: Yes  
Wet space: No  
Addition: No  
Conversion: No

305 South Point Shore Drive, North Shore, Moneta, Franklin  
County, Virginia, United States, 24121, 204

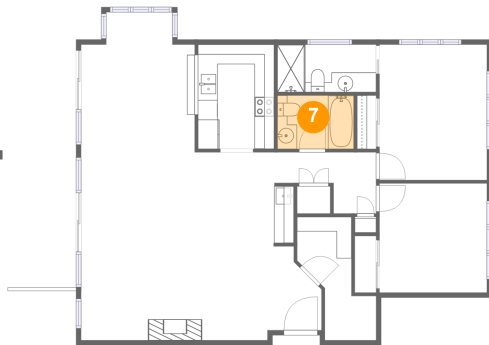
## 6 Floor 1 - Primary Bedroom



Max Dimensions: 10'11" x 13'9"  
Calculated Area: 149 sq. ft  
Included: Yes

Heated: Yes  
Finished: Yes  
Enclosed: Yes  
Contiguous: Yes  
Permitted: Yes  
Wet space: No  
Addition: No  
Conversion: No

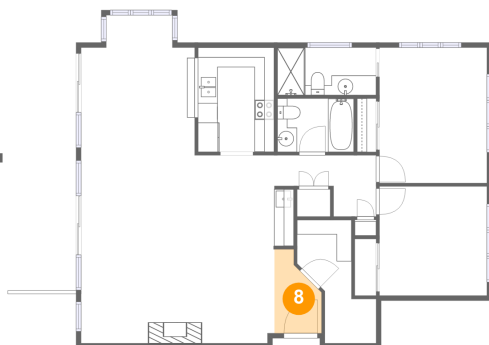
## 7 Floor 1 - Bath



Max Dimensions: 7'9" x 5'5"  
Calculated Area: 42 sq. ft  
Included: Yes

Heated: Yes  
Finished: Yes  
Enclosed: Yes  
Contiguous: Yes  
Permitted: Yes  
Wet space: Yes  
Addition: No  
Conversion: No

## 8 Floor 1 - Foyer



Max Dimensions: 4'9" x 8'6"  
Calculated Area: 32 sq. ft  
Included: Yes

Heated: Yes  
Finished: Yes  
Enclosed: Yes  
Contiguous: Yes  
Permitted: Yes  
Wet space: No  
Addition: No  
Conversion: No

305 South Point Shore Drive, North Shore, Moneta, Franklin  
County, Virginia, United States, 24121, 204

## 9 Floor 1 - Kitchen



Max Dimensions: 7'8" x  
10'7"  
Calculated Area: 88 sq. ft  
Included: Yes

Heated: Yes  
Finished: Yes  
Enclosed: Yes  
Contiguous:  
Yes  
Permitted: Yes  
Wet space: No  
Addition: No  
Conversion: No

## 10 Floor 1 - Storage



Max Dimensions: 5'6" x  
12'6"  
Calculated Area: 61 sq. ft  
Included: No

Heated: No  
Finished: No  
Enclosed: No  
Contiguous:  
No  
Permitted: Yes  
Wet space: No  
Addition: No  
Conversion: No

## 11 Floor 1 - Living Room



Max Dimensions: 19'7" x  
19'0"  
Calculated Area: 383 sq. ft  
Included: Yes

Heated: Yes  
Finished: Yes  
Enclosed: Yes  
Contiguous:  
Yes  
Permitted: Yes  
Wet space: No  
Addition: No  
Conversion: No