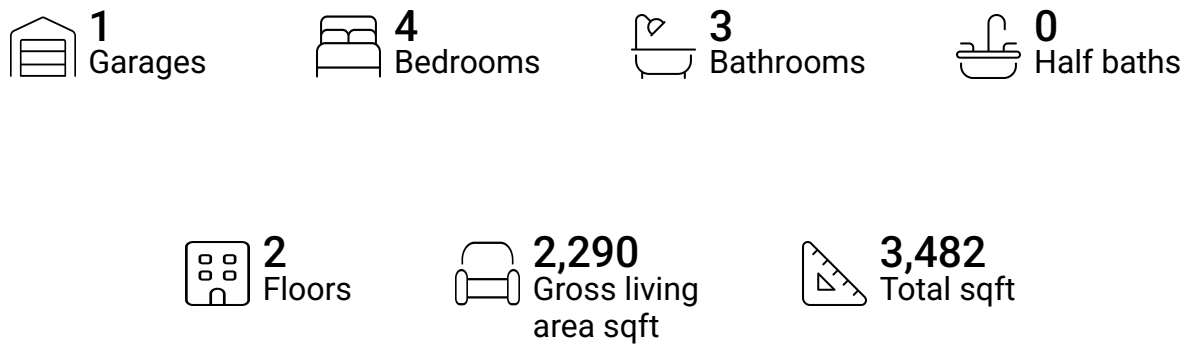


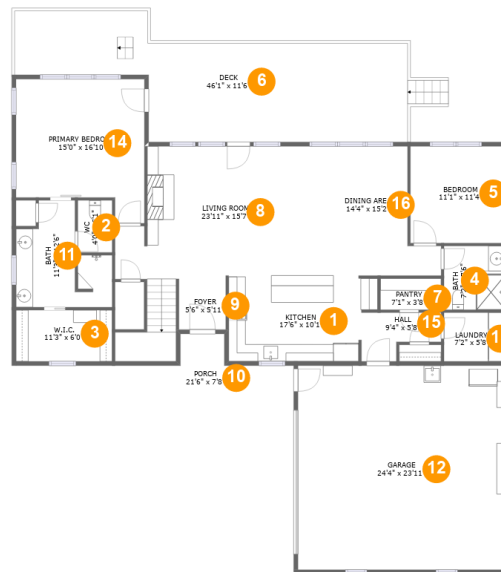
1518 Johns Ridge Parkway, Lenoir, Caldwell County,
North Carolina, United States, 28645



Property summary



1518 Johns Ridge Parkway, Lenoir, Caldwell County, North Carolina, United States, 28645



Room dimensions

Floor 1

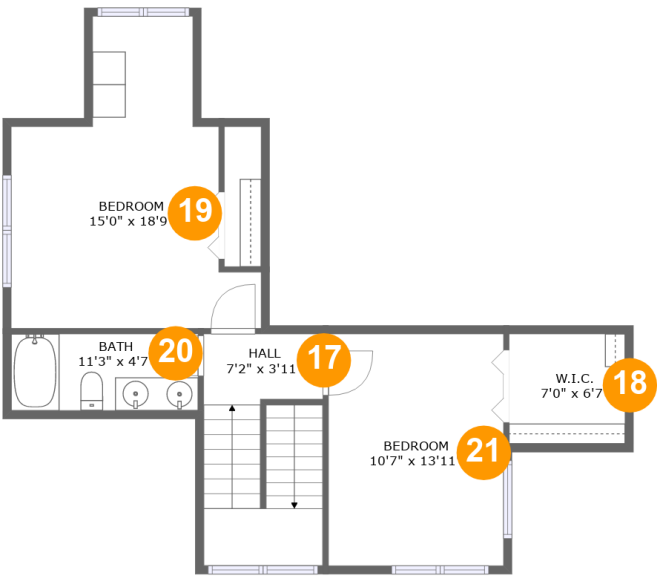
Total sqft: 2829 Living area: 1637

#		Dimensions	sqft	Counted as living area
1	Kitchen	17'6" x 10'1"	163 sq. ft	Yes
2	WC	4'0" x 6'1"	25 sq. ft	Yes
3	W.I.C.	11'3" x 6'0"	68 sq. ft	Yes
4	Bath	7'2" x 7'6"	54 sq. ft	Yes
5	Bedroom	11'1" x 11'4"	126 sq. ft	Yes
6	Deck	46'1" x 11'6"	469 sq. ft	No
7	Pantry	7'1" x 3'8"	26 sq. ft	Yes
8	Living Room	23'11" x 15'7"	377 sq. ft	Yes
9	Foyer	5'6" x 5'11"	33 sq. ft	Yes
10	Porch	21'6" x 7'8"	105 sq. ft	No
11	Bath	11'3" x 12'6"	102 sq. ft	Yes

**1518 Johns Ridge Parkway, Lenoir, Caldwell County,
North Carolina, United States, 28645**

#		Dimensions	sqft	Counted as living area
12	Garage	24'4" x 23'11"	582 sq. ft	No
13	Laundry	7'2" x 5'8"	41 sq. ft	Yes
14	Primary Bedroom	15'0" x 16'10"	219 sq. ft	Yes
15	Hall	9'4" x 5'8"	41 sq. ft	Yes
16	Dining Area	14'4" x 15'2"	172 sq. ft	Yes

1518 Johns Ridge Parkway, Lenoir, Caldwell County,
North Carolina, United States, 28645



Room dimensions

Floor 2 Total sqft: 653 Living area: 653

#		Dimensions	sqft	Counted as living area
17	Hall	7'2" x 3'11"	97 sq. ft	Yes
18	W.I.C.	7'0" x 6'7"	46 sq. ft	Yes
19	Bedroom	15'0" x 18'9"	201 sq. ft	Yes
20	Bath	11'3" x 4'7"	52 sq. ft	Yes
21	Bedroom	10'7" x 13'11"	147 sq. ft	Yes

**1518 Johns Ridge Parkway, Lenoir, Caldwell County,
North Carolina, United States, 28645**

1 Floor 1 - Kitchen



Dimensions: 17'6" x 10'1"
Area: 163 sq. ft
Counted as living area: Yes

Heated: Yes
Finished: Yes
Enclosed: Yes
Contiguous: Yes
Permitted: Yes
Wet space: No
Addition: No
Conversion: No

2 Floor 1 - WC



Dimensions: 4'0" x 6'1"
Area: 25 sq. ft
Counted as living area: Yes

Heated: Yes
Finished: Yes
Enclosed: Yes
Contiguous: Yes
Permitted: Yes
Wet space: Yes
Addition: No
Conversion: No

**1518 Johns Ridge Parkway, Lenoir, Caldwell County,
North Carolina, United States, 28645**

3 Floor 1 - W.I.C.



Dimensions: 11'3" x 6'0"
Area: 68 sq. ft
Counted as living area: Yes

Heated: Yes
Finished: Yes
Enclosed: Yes
Contiguous: Yes
Permitted: Yes
Wet space: No
Addition: No
Conversion: No

4 Floor 1 - Bath



Dimensions: 7'2" x 7'6"
Area: 54 sq. ft
Counted as living area: Yes

Heated: Yes
Finished: Yes
Enclosed: Yes
Contiguous: Yes
Permitted: Yes
Wet space: Yes
Addition: No
Conversion: No

5 Floor 1 - Bedroom



Dimensions: 11'1" x 11'4"
Area: 126 sq. ft
Counted as living area: Yes

Heated: Yes
Finished: Yes
Enclosed: Yes
Contiguous: Yes
Permitted: Yes
Wet space: No
Addition: No
Conversion: No

**1518 Johns Ridge Parkway, Lenoir, Caldwell County,
North Carolina, United States, 28645**

6 Floor 1 - Deck



Dimensions: 46'1" x 11'6"
Area: 469 sq. ft
Counted as living area: No

Heated: No
Finished: Yes
Enclosed: No
Contiguous: Yes
Permitted: Yes
Wet space: No
Addition: No
Conversion: No

7 Floor 1 - Pantry



Dimensions: 7'1" x 3'8"
Area: 26 sq. ft
Counted as living area: Yes

Heated: Yes
Finished: Yes
Enclosed: Yes
Contiguous: Yes
Permitted: Yes
Wet space: No
Addition: No
Conversion: No

8 Floor 1 - Living Room



Dimensions: 23'11" x 15'7"
Area: 377 sq. ft
Counted as living area: Yes

Heated: Yes
Finished: Yes
Enclosed: Yes
Contiguous: Yes
Permitted: Yes
Wet space: No
Addition: No
Conversion: No

**1518 Johns Ridge Parkway, Lenoir, Caldwell County,
North Carolina, United States, 28645**

9 Floor 1 - Foyer



Dimensions: 5'6" x 5'11"
Area: 33 sq. ft
Counted as living area: Yes

Heated: Yes
Finished: Yes
Enclosed: Yes
Contiguous: Yes
Permitted: Yes
Wet space: No
Addition: No
Conversion: No

10 Floor 1 - Porch



Dimensions: 21'6" x 7'8"
Area: 105 sq. ft
Counted as living area: No

Heated: No
Finished: Yes
Enclosed: No
Contiguous: Yes
Permitted: Yes
Wet space: No
Addition: No
Conversion: No

11 Floor 1 - Bath



Dimensions: 11'3" x 12'6"
Area: 102 sq. ft
Counted as living area: Yes

Heated: Yes
Finished: Yes
Enclosed: Yes
Contiguous: Yes
Permitted: Yes
Wet space: Yes
Addition: No
Conversion: No

**1518 Johns Ridge Parkway, Lenoir, Caldwell County,
North Carolina, United States, 28645**

12 Floor 1 - Garage



Dimensions: 24'4" x 23'11"
Area: 582 sq. ft
Counted as living area: No

Heated: No
Finished: No
Enclosed: Yes
Contiguous: Yes
Permitted: Yes
Wet space: No
Addition: No
Conversion: No

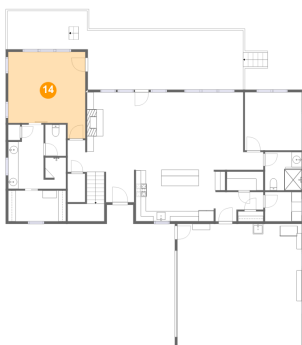
13 Floor 1 - Laundry



Dimensions: 7'2" x 5'8"
Area: 41 sq. ft
Counted as living area: Yes

Heated: Yes
Finished: Yes
Enclosed: Yes
Contiguous: Yes
Permitted: Yes
Wet space: No
Addition: No
Conversion: No

14 Floor 1 - Primary Bedroom



Dimensions: 15'0" x 16'10"
Area: 219 sq. ft
Counted as living area: Yes

Heated: Yes
Finished: Yes
Enclosed: Yes
Contiguous: Yes
Permitted: Yes
Wet space: No
Addition: No
Conversion: No

1518 Johns Ridge Parkway, Lenoir, Caldwell County,
North Carolina, United States, 28645

15 Floor 1 - Hall



Dimensions: 9'4" x 5'8"
Area: 41 sq. ft
Counted as living area: Yes

Heated: Yes
Finished: Yes
Enclosed: Yes
Contiguous: Yes
Permitted: Yes
Wet space: No
Addition: No
Conversion: No

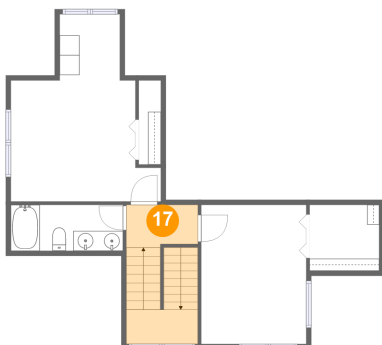
16 Floor 1 - Dining Area



Dimensions: 14'4" x 15'2"
Area: 172 sq. ft
Counted as living area: Yes

Heated: Yes
Finished: Yes
Enclosed: Yes
Contiguous: Yes
Permitted: Yes
Wet space: No
Addition: No
Conversion: No

17 Floor 2 - Hall

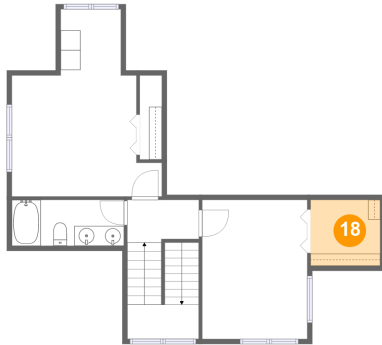


Dimensions: 7'2" x 3'11"
Area: 97 sq. ft
Counted as living area: Yes

Heated: Yes
Finished: Yes
Enclosed: Yes
Contiguous: Yes
Permitted: Yes
Wet space: No
Addition: No
Conversion: No

1518 Johns Ridge Parkway, Lenoir, Caldwell County,
North Carolina, United States, 28645

18 Floor 2 - W.I.C.



Dimensions: 7'0" x 6'7"
Area: 46 sq. ft
Counted as living area: Yes

Heated: Yes
Finished: Yes
Enclosed: Yes
Contiguous: Yes
Permitted: Yes
Wet space: No
Addition: No
Conversion: No

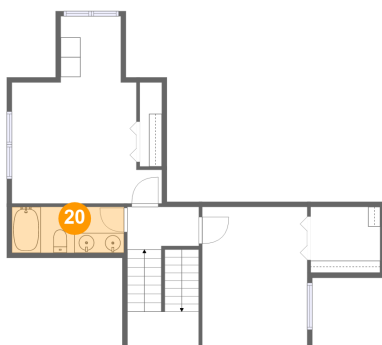
19 Floor 2 - Bedroom



Dimensions: 15'0" x 18'9"
Area: 201 sq. ft
Counted as living area: Yes

Heated: Yes
Finished: Yes
Enclosed: Yes
Contiguous: Yes
Permitted: Yes
Wet space: No
Addition: No
Conversion: No

20 Floor 2 - Bath

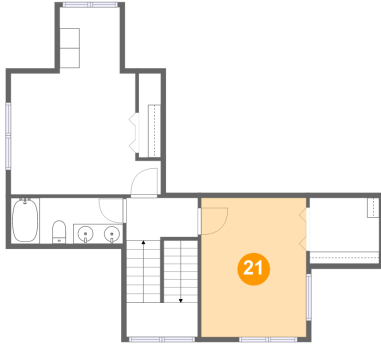


Dimensions: 11'3" x 4'7"
Area: 52 sq. ft
Counted as living area: Yes

Heated: Yes
Finished: Yes
Enclosed: Yes
Contiguous: Yes
Permitted: Yes
Wet space: Yes
Addition: No
Conversion: No

**1518 Johns Ridge Parkway, Lenoir, Caldwell County,
North Carolina, United States, 28645**

21 Floor 2 - Bedroom



Dimensions: 10'7" x 13'11"
Area: 147 sq. ft
Counted as living area: Yes

Heated: Yes
Finished: Yes
Enclosed: Yes
Contiguous: Yes
Permitted: Yes
Wet space: No
Addition: No
Conversion: No