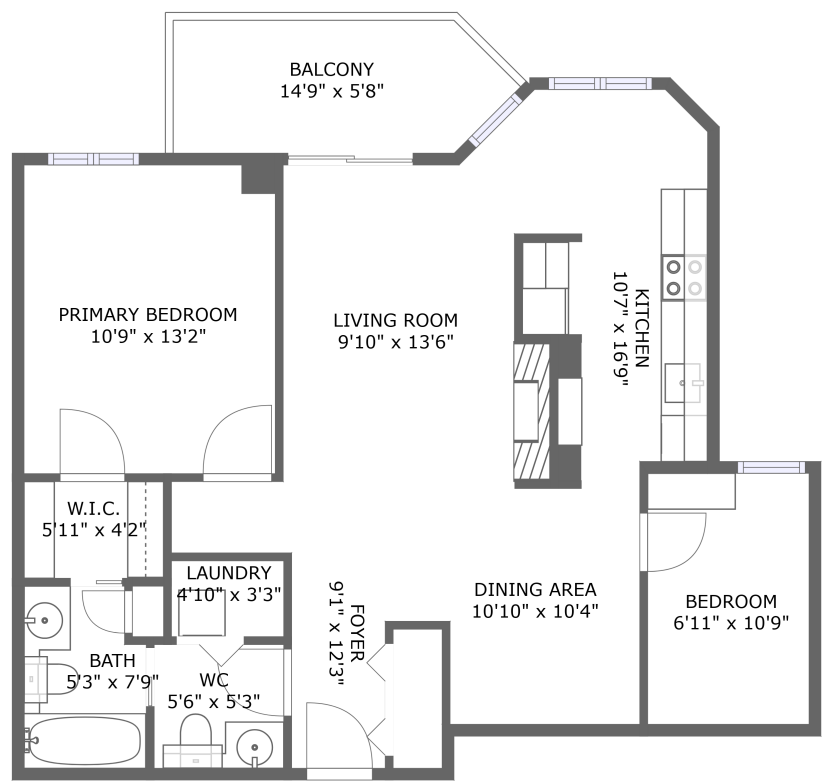


Home report

45 Argyle Avenue, Centretown, Ottawa East, Ottawa,
Ontario, Canada, K2P 1B3, 302



FLOOR 1


Total Area: 865 sq. ft

Floor 1: 865 sq. ft

Excluded: Outdoor Balcony 76 sq. ft

Property summary

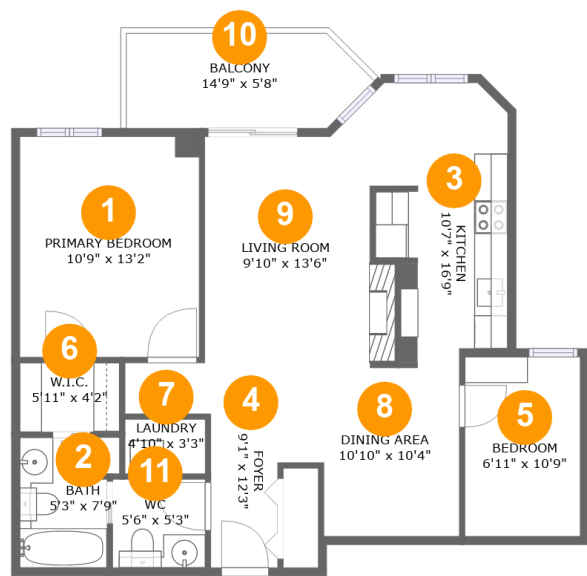
 1 Floors

 2 Bedrooms

 1 Bathrooms

Home report

45 Argyle Avenue, Centretown, Ottawa East, Ottawa,
Ontario, Canada, K2P 1B3, 302



Room dimensions

Floor 1 Total:865sqft Excluded: 76sqft

#		Max Dimensions	sqft	Included
1	Primary Bedroom	10'9" x 13'2"	141 sq. ft	Yes
2	Bath	5'3" x 7'9"	38 sq. ft	Yes
3	Kitchen	10'7" x 16'9"	131 sq. ft	Yes
4	Foyer	9'1" x 12'3"	65 sq. ft	Yes
5	Bedroom	6'11" x 10'9"	74 sq. ft	Yes
6	W.I.C.	5'11" x 4'2"	25 sq. ft	Yes
7	Laundry	4'10" x 3'3"	16 sq. ft	Yes
8	Dining Area	10'10" x 10'4"	100 sq. ft	Yes
9	Living Room	9'10" x 13'6"	139 sq. ft	Yes
10	Balcony	14'9" x 5'8"	76 sq. ft	No
11	WC	5'6" x 5'3"	29 sq. ft	Yes

45 Argyle Avenue, Centretown, Ottawa East, Ottawa,
Ontario, Canada, K2P 1B3, 302

1 Floor 1 - Primary Bedroom



Max Dimensions: 10'9" x 13'2"
Calculated Area: 141 sq. ft
Included: Yes

Heated: Yes
Finished: Yes
Enclosed: Yes
Contiguous: Yes
Permitted: Yes
Wet space: No
Addition: No
Conversion: No

2 Floor 1 - Bath



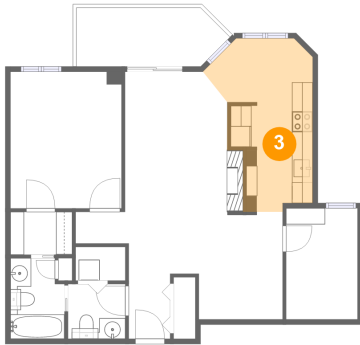
Max Dimensions: 5'3" x 7'9"
Calculated Area: 38 sq. ft
Included: Yes

Heated: Yes
Finished: Yes
Enclosed: Yes
Contiguous: Yes
Permitted: Yes
Wet space: Yes
Addition: No
Conversion: No

Home report

45 Argyle Avenue, Centretown, Ottawa East, Ottawa,
Ontario, Canada, K2P 1B3, 302

3 Floor 1 - Kitchen



Max Dimensions: 10'7" x 16'9"
Calculated Area: 131 sq. ft
Included: Yes

Heated: Yes
Finished: Yes
Enclosed: Yes
Contiguous: Yes
Permitted: Yes
Wet space: No
Addition: No
Conversion: No

4 Floor 1 - Foyer



Max Dimensions: 9'1" x 12'3"
Calculated Area: 65 sq. ft
Included: Yes

Heated: Yes
Finished: Yes
Enclosed: Yes
Contiguous: Yes
Permitted: Yes
Wet space: No
Addition: No
Conversion: No

5 Floor 1 - Bedroom



Max Dimensions: 6'11" x 10'9"
Calculated Area: 74 sq. ft
Included: Yes

Heated: Yes
Finished: Yes
Enclosed: Yes
Contiguous: Yes
Permitted: Yes
Wet space: No
Addition: No
Conversion: No

Home report

45 Argyle Avenue, Centretown, Ottawa East, Ottawa,
Ontario, Canada, K2P 1B3, 302

6 Floor 1 - W.I.C.



Max Dimensions: 5'11" x 4'2"
Calculated Area: 25 sq. ft
Included: Yes

Heated: Yes
Finished: Yes
Enclosed: Yes
Contiguous: Yes
Permitted: Yes
Wet space: No
Addition: No
Conversion: No

7 Floor 1 - Laundry



Max Dimensions: 4'10" x 3'3"
Calculated Area: 16 sq. ft
Included: Yes

Heated: Yes
Finished: Yes
Enclosed: Yes
Contiguous: Yes
Permitted: Yes
Wet space: No
Addition: No
Conversion: No

8 Floor 1 - Dining Area



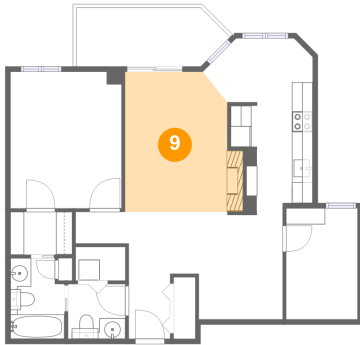
Max Dimensions: 10'10" x 10'4"
Calculated Area: 100 sq. ft
Included: Yes

Heated: Yes
Finished: Yes
Enclosed: Yes
Contiguous: Yes
Permitted: Yes
Wet space: No
Addition: No
Conversion: No

Home report

45 Argyle Avenue, Centretown, Ottawa East, Ottawa,
Ontario, Canada, K2P 1B3, 302

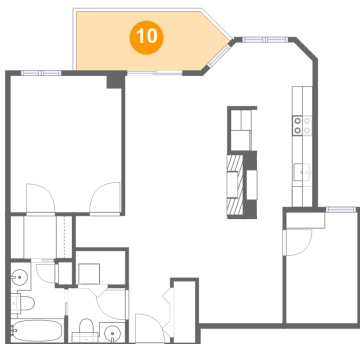
9 Floor 1 - Living Room



Max Dimensions: 9'10" x 13'6"
Calculated Area: 139 sq. ft
Included: Yes

Heated: Yes
Finished: Yes
Enclosed: Yes
Contiguous: Yes
Permitted: Yes
Wet space: No
Addition: No
Conversion: No

10 Floor 1 - Balcony



Max Dimensions: 14'9" x 5'8"
Calculated Area: 76 sq. ft
Included: No

Heated: No
Finished: Yes
Enclosed: No
Contiguous: Yes
Permitted: Yes
Wet space: No
Addition: No
Conversion: No

11 Floor 1 - WC



Max Dimensions: 5'6" x 5'3"
Calculated Area: 29 sq. ft
Included: Yes

Heated: Yes
Finished: Yes
Enclosed: Yes
Contiguous: Yes
Permitted: Yes
Wet space: Yes
Addition: No
Conversion: No