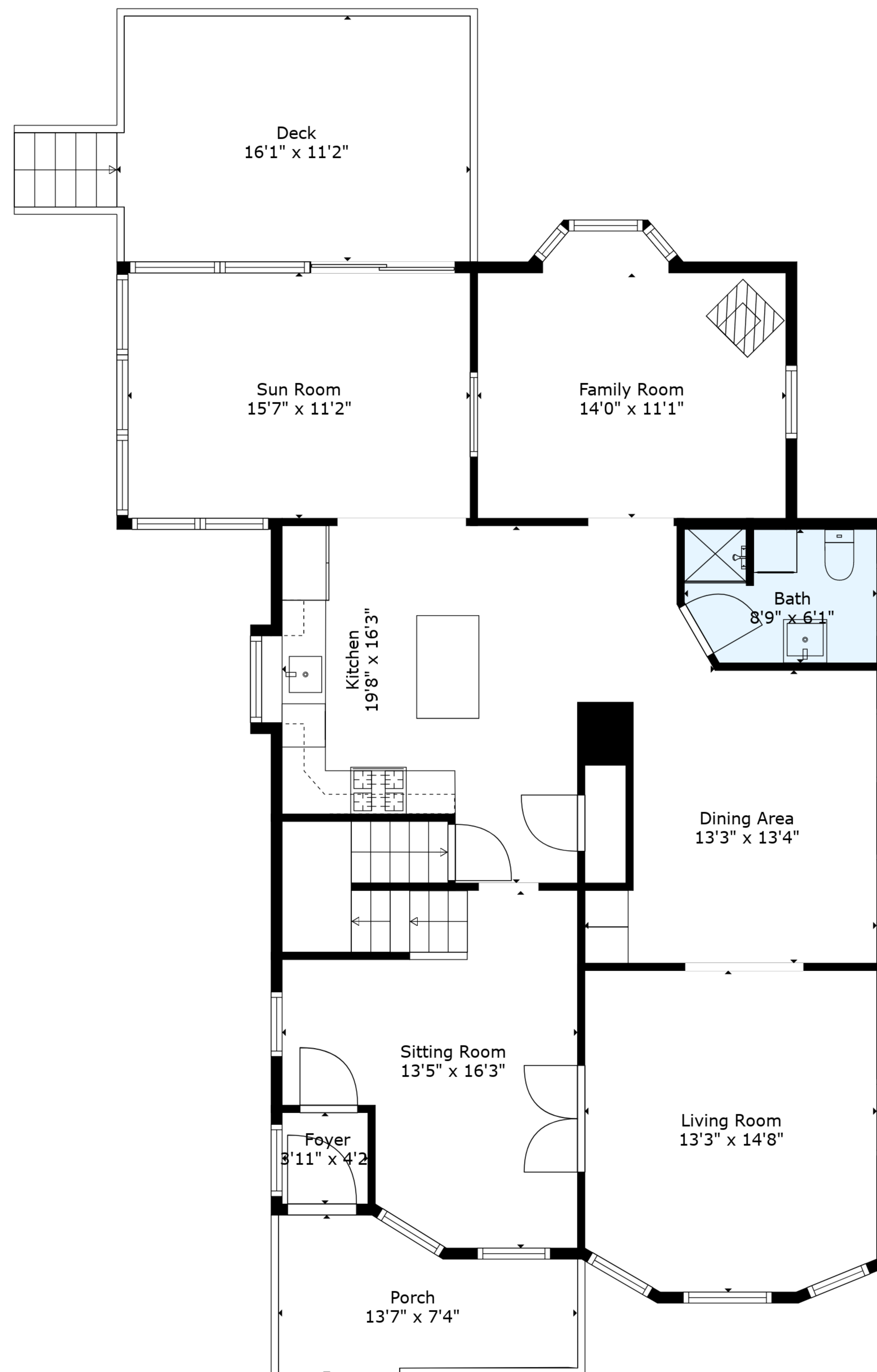


Basement
27'1" x 46'4"

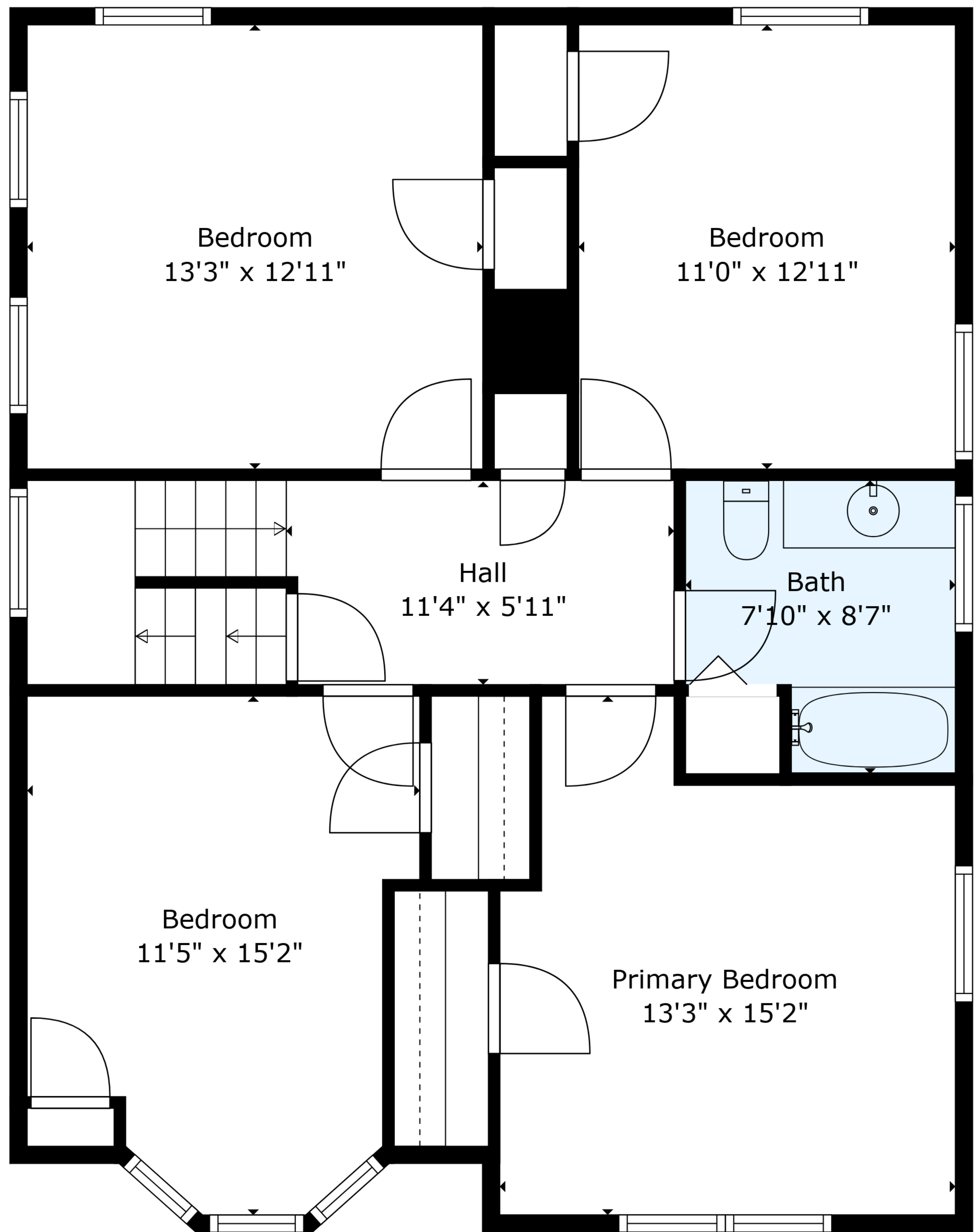
TOTAL: 2730 sq. ft

BELOW GROUND: 0 sq. ft, FLOOR 2: 1240 sq. ft, FLOOR 3: 922 sq. ft, FLOOR 4: 568 sq. ft
EXCLUDED AREAS: BASEMENT: 1051 sq. ft, PORCH: 81 sq. ft, DECK: 193 sq. ft,
BAY WINDOW: 15 sq. ft, LOW CEILING: 74 sq. ft
WALLS: 274 sq. ft



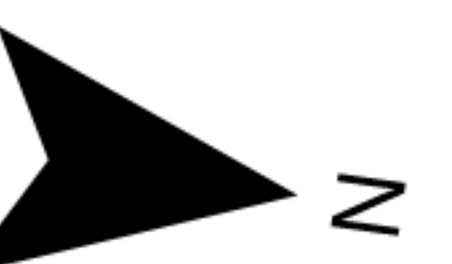
TOTAL: 2730 sq. ft

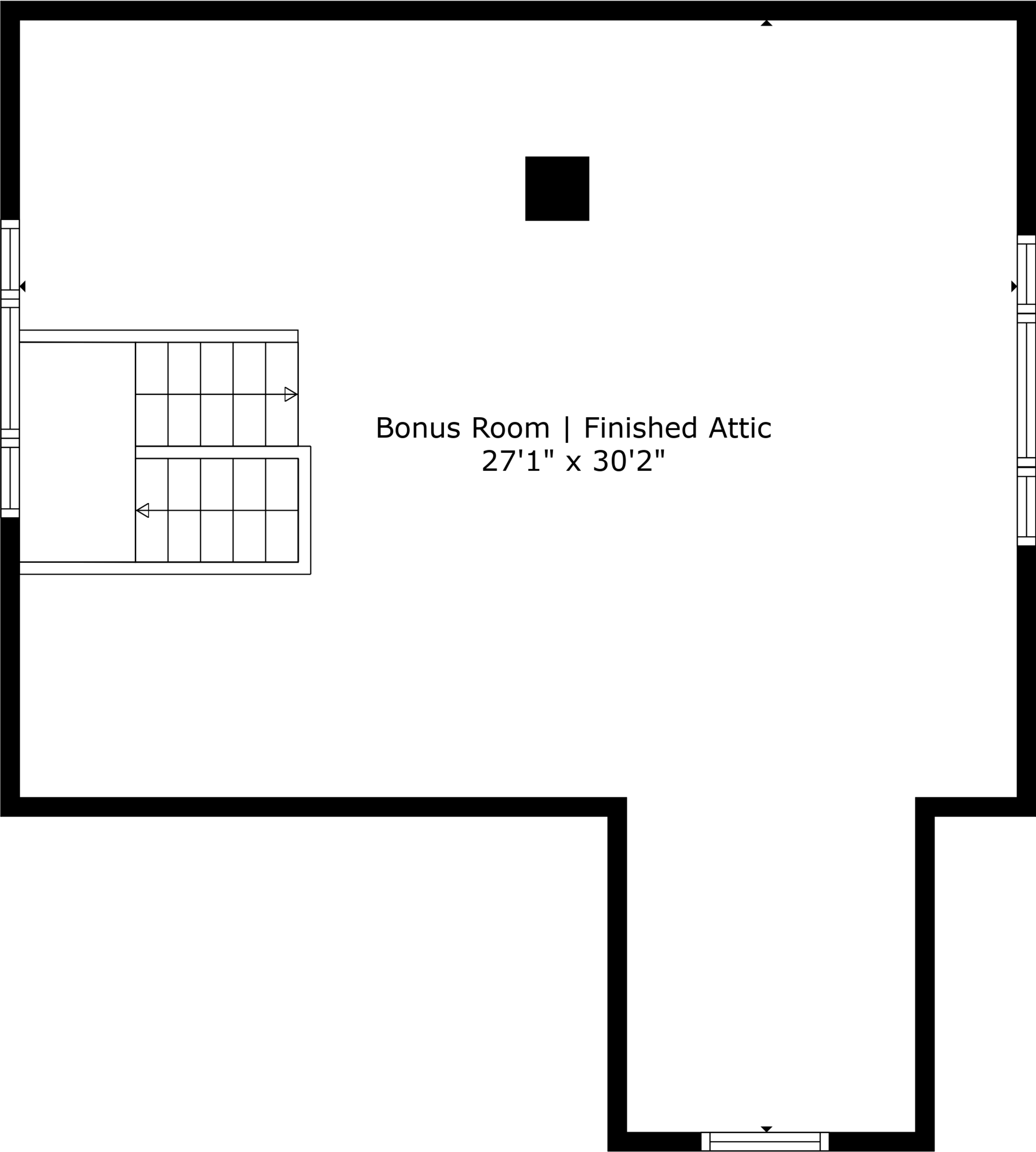
BELOW GROUND: 0 sq. ft, FLOOR 2: 1240 sq. ft, FLOOR 3: 922 sq. ft, FLOOR 4: 568 sq. ft
 EXCLUDED AREAS: BASEMENT: 1051 sq. ft, PORCH: 81 sq. ft, DECK: 193 sq. ft,
 BAY WINDOW: 15 sq. ft, LOW CEILING: 74 sq. ft
 WALLS: 274 sq. ft



TOTAL: 2730 sq. ft

BELOW GROUND: 0 sq. ft, FLOOR 2: 1240 sq. ft, FLOOR 3: 922 sq. ft, FLOOR 4: 568 sq. ft
EXCLUDED AREAS: BASEMENT: 1051 sq. ft, PORCH: 81 sq. ft, DECK: 193 sq. ft,
BAY WINDOW: 15 sq. ft, LOW CEILING: 74 sq. ft
WALLS: 274 sq. ft

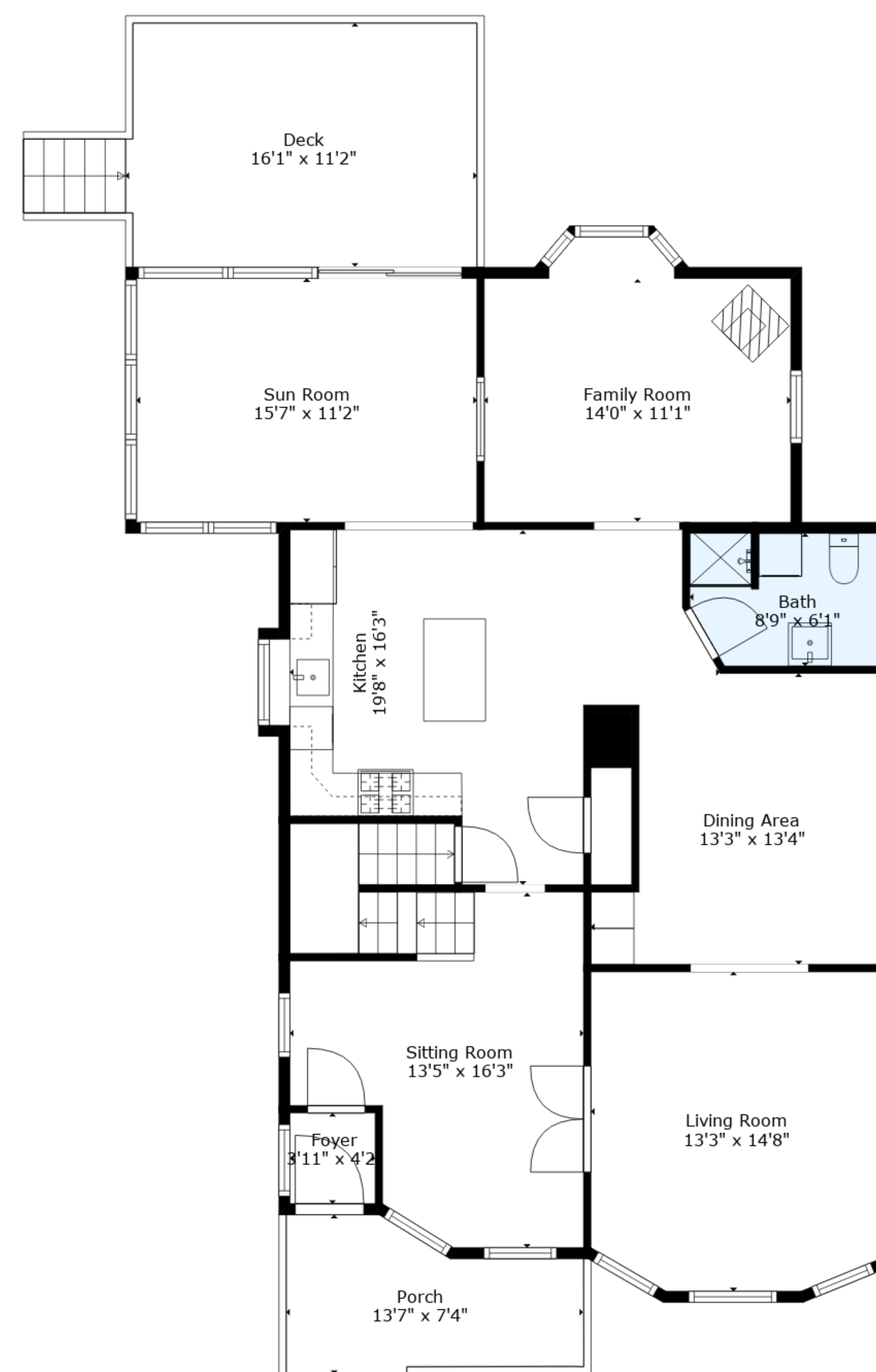




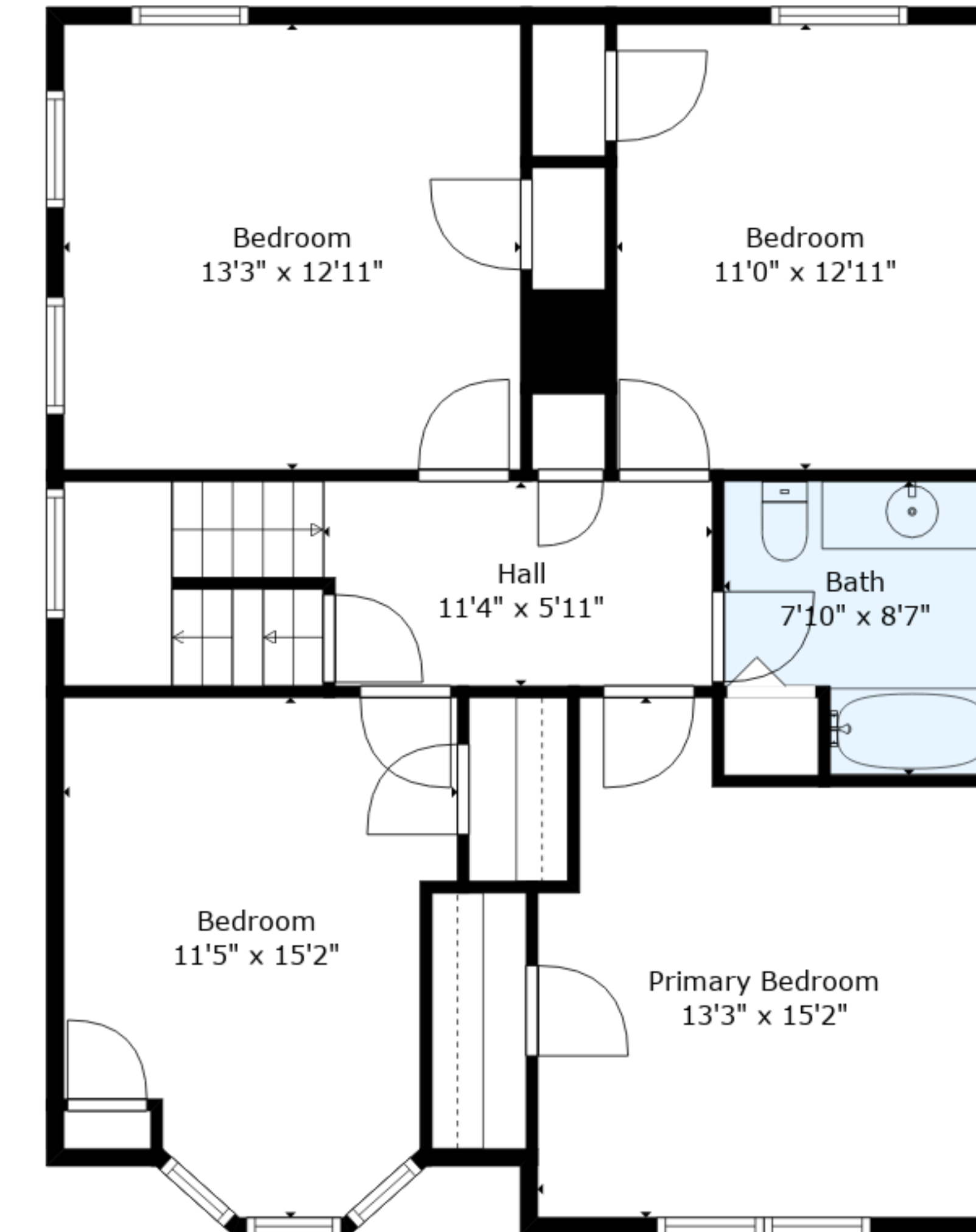
TOTAL: 2730 sq. ft

BELOW GROUND: 0 sq. ft, FLOOR 2: 1240 sq. ft, FLOOR 3: 922 sq. ft, FLOOR 4: 568 sq. ft
EXCLUDED AREAS: BASEMENT: 1051 sq. ft, PORCH: 81 sq. ft, DECK: 193 sq. ft,
BAY WINDOW: 15 sq. ft, LOW CEILING: 74 sq. ft
WALLS: 274 sq. ft

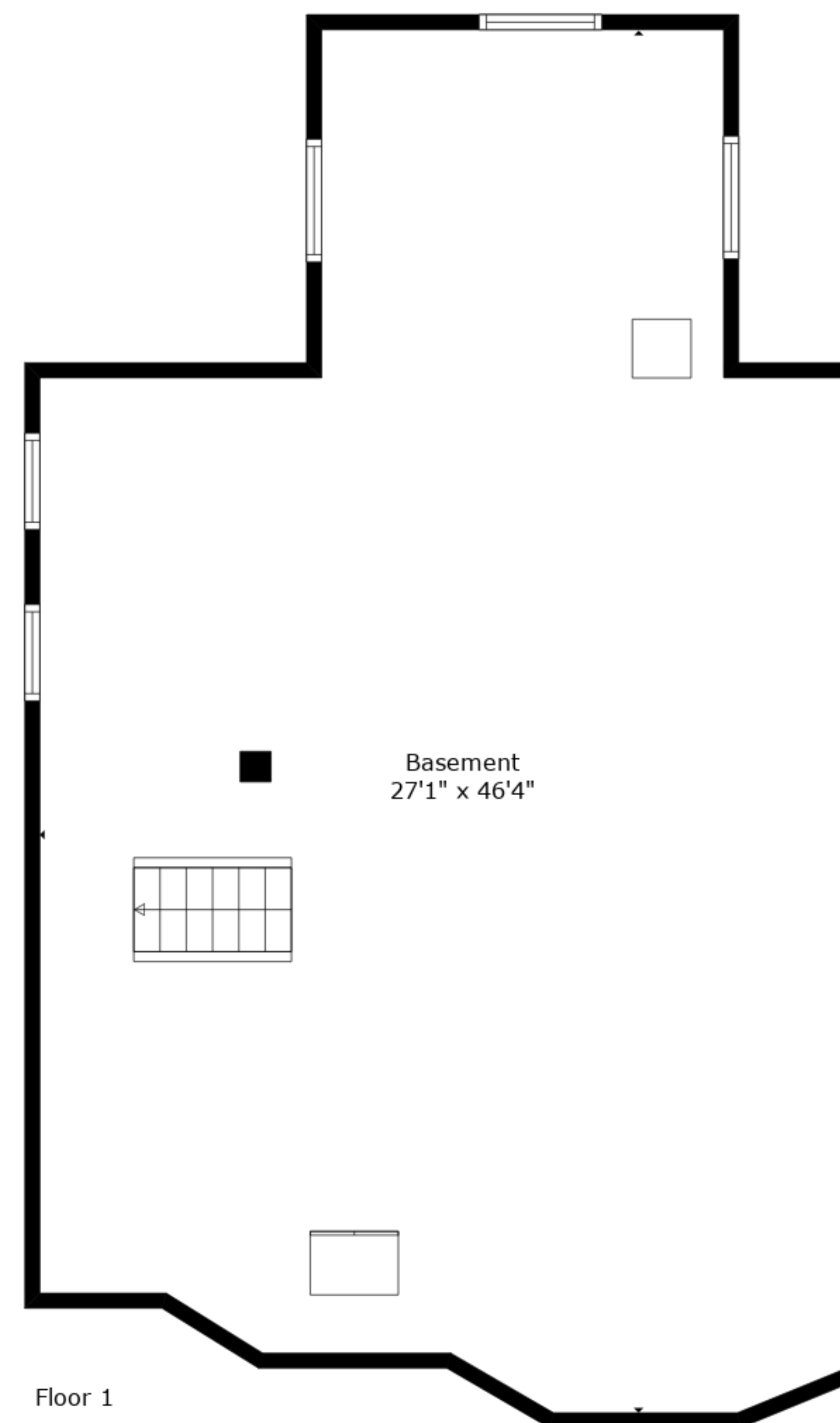




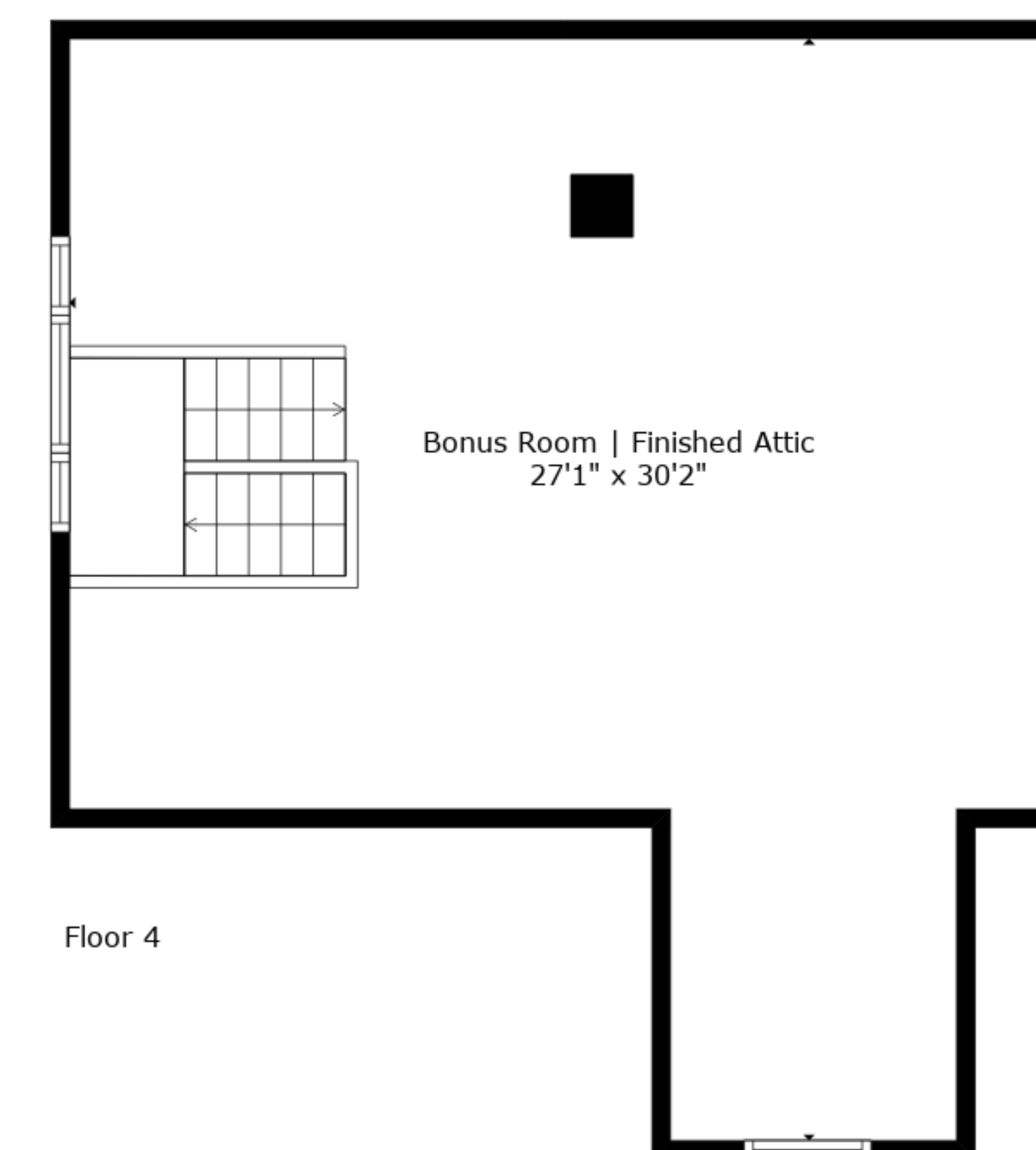
Floor 2



Floor 3



Floor 1



Floor 4

TOTAL: 2730 sq. ft

BELOW GROUND: 0 sq. ft, FLOOR 2: 1240 sq. ft, FLOOR 3: 922 sq. ft, FLOOR 4: 568 sq. ft
 EXCLUDED AREAS: BASEMENT: 1051 sq. ft, PORCH: 81 sq. ft, DECK: 193 sq. ft,
 BAY WINDOW: 15 sq. ft, LOW CEILING: 74 sq. ft
 WALLS: 274 sq. ft

