

Home report

344 Maple Avenue, Lancaster, Lancaster County, Pennsylvania,
United States, 17602



Total Area: 938 sq. ft
Below Ground: 0 sq. ft, Floor 2: 469 sq. ft, Floor 3: 469 sq. ft
Excluded: Basement 424 sq. ft, Deck 131 sq. ft, Walls: 109 sq. ft

Property summary

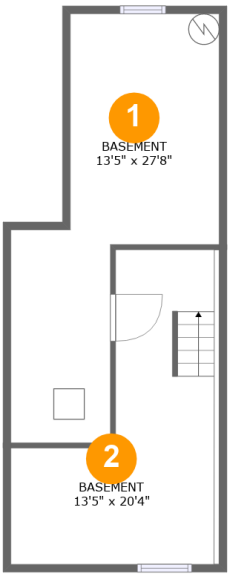
 **3** Floors

 **2** Bedrooms

 **1** Bathrooms

Home report

344 Maple Avenue, Lancaster, Lancaster County, Pennsylvania,
United States, 17602



Room dimensions

Floor 1 Below ground Total:0sqft Excluded: 424sqft

#		Max Dimensions	sqft	Included
1	Basement	13'5" x 27'8"	229 sq. ft	No
2	Basement	13'5" x 20'4"	187 sq. ft	No

Home report

344 Maple Avenue, Lancaster, Lancaster County, Pennsylvania,
United States, 17602



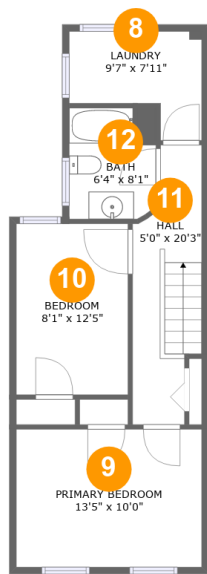
Room dimensions

Floor 2 Total:469sqft Excluded: 131sqft

#		Max Dimensions	sqft	Included
3	Dining Area	13'5" x 14'5"	191 sq. ft	Yes
4	Foyer	3'6" x 10'6"	37 sq. ft	Yes
5	Deck	13'5" x 9'9"	131 sq. ft	No
6	Kitchen	9'7" x 13'7"	131 sq. ft	Yes
7	Living Room	9'7" x 10'2"	97 sq. ft	Yes

Home report

344 Maple Avenue, Lancaster, Lancaster County, Pennsylvania,
United States, 17602

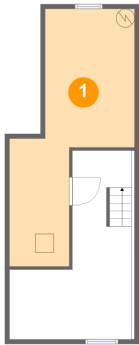


Room dimensions

Floor 3 Total:469sqft Excluded: 0sqft

#		Max Dimensions	sqft	Included
8	Laundry	9'7" x 7'11"	58 sq. ft	Yes
9	Primary Bedroom	13'5" x 10'0"	135 sq. ft	Yes
10	Bedroom	8'1" x 12'5"	100 sq. ft	Yes
11	Hall	5'0" x 20'3"	85 sq. ft	Yes
12	Bath	6'4" x 8'1"	46 sq. ft	Yes

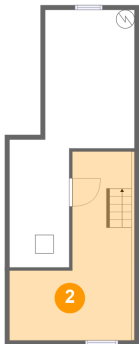
1 Floor 1 - Basement



Max Dimensions: 13'5" x 27'8"
Calculated Area: 229 sq. ft
Included: No

Heated: Yes
Finished: No
Enclosed: Yes
Contiguous: Yes
Permitted: Yes
Wet space: No
Addition: No
Conversion: No

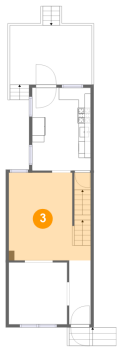
2 Floor 1 - Basement



Max Dimensions: 13'5" x 20'4"
Calculated Area: 187 sq. ft
Included: No

Heated: Yes
Finished: No
Enclosed: Yes
Contiguous: Yes
Permitted: Yes
Wet space: No
Addition: No
Conversion: No

3 Floor 2 - Dining Area



Max Dimensions: 13'5" x 14'5"
Calculated Area: 191 sq. ft
Included: Yes

Heated: Yes
Finished: Yes
Enclosed: Yes
Contiguous: Yes
Permitted: Yes
Wet space: No
Addition: No
Conversion: No

4 Floor 2 - Foyer



Max Dimensions: 3'6" x 10'6"
Calculated Area: 37 sq. ft
Included: Yes

Heated: Yes
Finished: Yes
Enclosed: Yes
Contiguous: Yes
Permitted: Yes
Wet space: No
Addition: No
Conversion: No

5 Floor 2 - Deck



Max Dimensions: 13'5" x 9'9"
Calculated Area: 131 sq. ft
Included: No

Heated: No
Finished: Yes
Enclosed: No
Contiguous: Yes
Permitted: Yes
Wet space: No
Addition: No
Conversion: No

6 Floor 2 - Kitchen



Max Dimensions: 9'7" x 13'7"
Calculated Area: 131 sq. ft
Included: Yes

Heated: Yes
Finished: Yes
Enclosed: Yes
Contiguous: Yes
Permitted: Yes
Wet space: No
Addition: No
Conversion: No

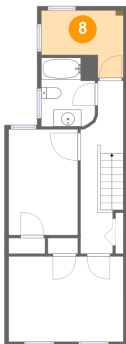
7 Floor 2 - Living Room



Max Dimensions: 9'7" x 10'2"
Calculated Area: 97 sq. ft
Included: Yes

Heated: Yes
Finished: Yes
Enclosed: Yes
Contiguous: Yes
Permitted: Yes
Wet space: No
Addition: No
Conversion: No

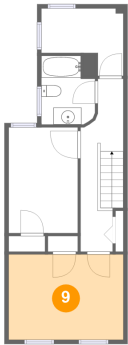
8 Floor 3 - Laundry



Max Dimensions: 9'7" x 7'11"
Calculated Area: 58 sq. ft
Included: Yes

Heated: Yes
Finished: Yes
Enclosed: Yes
Contiguous: Yes
Permitted: Yes
Wet space: No
Addition: No
Conversion: No

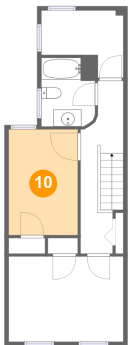
9 Floor 3 - Primary Bedroom



Max Dimensions: 13'5" x 10'0"
Calculated Area: 135 sq. ft
Included: Yes

Heated: Yes
Finished: Yes
Enclosed: Yes
Contiguous: Yes
Permitted: Yes
Wet space: No
Addition: No
Conversion: No

10 Floor 3 - Bedroom



Max Dimensions: 8'1" x 12'5"
Calculated Area: 100 sq. ft
Included: Yes

Heated: Yes
Finished: Yes
Enclosed: Yes
Contiguous: Yes
Permitted: Yes
Wet space: No
Addition: No
Conversion: No

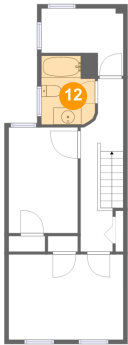
11 Floor 3 - Hall



Max Dimensions: 5'0" x 20'3"
Calculated Area: 85 sq. ft
Included: Yes

Heated: Yes
Finished: Yes
Enclosed: Yes
Contiguous: Yes
Permitted: Yes
Wet space: No
Addition: No
Conversion: No

12 Floor 3 - Bath



Max Dimensions: 6'4" x 8'1"
Calculated Area: 46 sq. ft
Included: Yes

Heated: Yes
Finished: Yes
Enclosed: Yes
Contiguous: Yes
Permitted: Yes
Wet space: Yes
Addition: No
Conversion: No