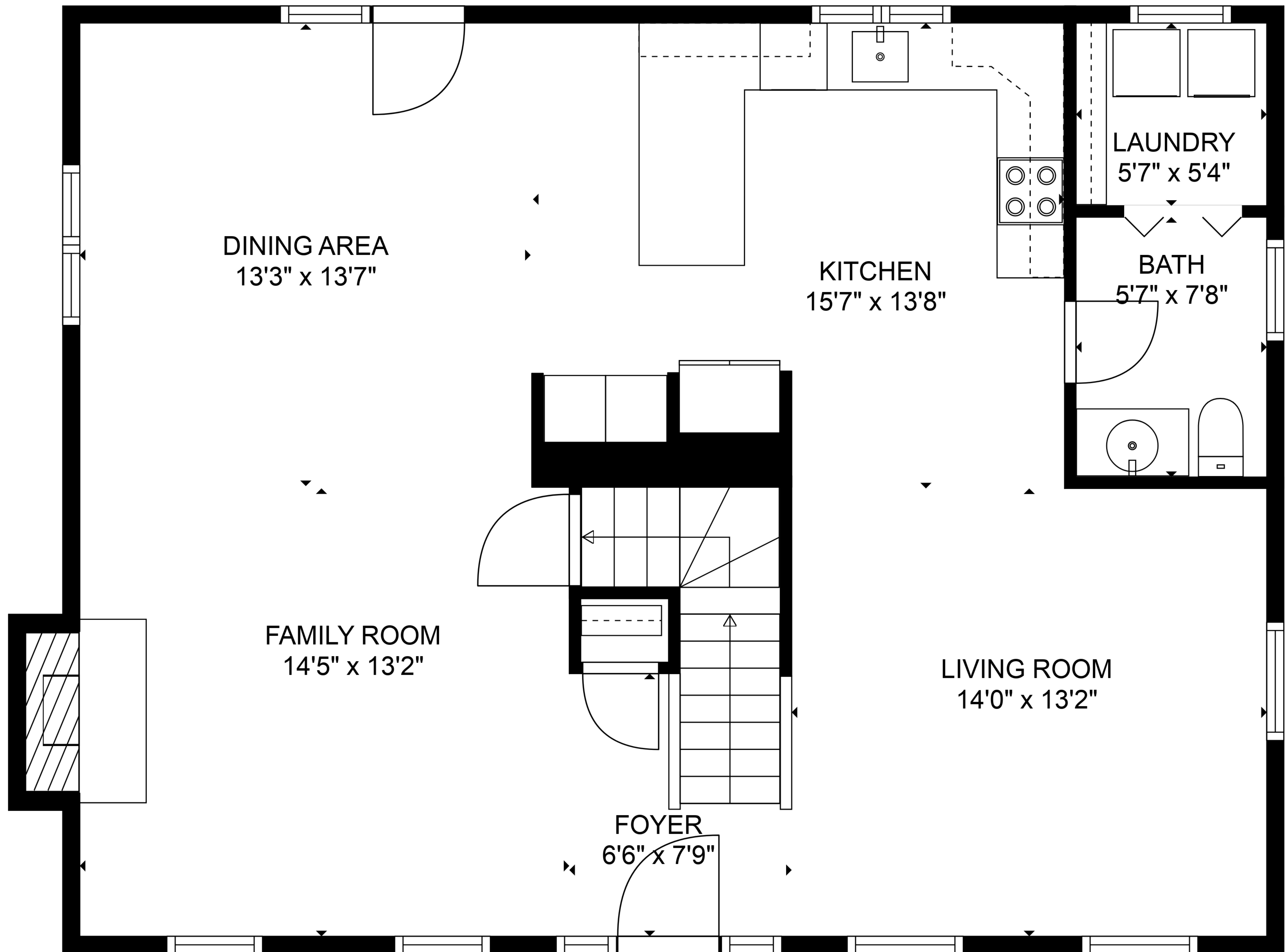
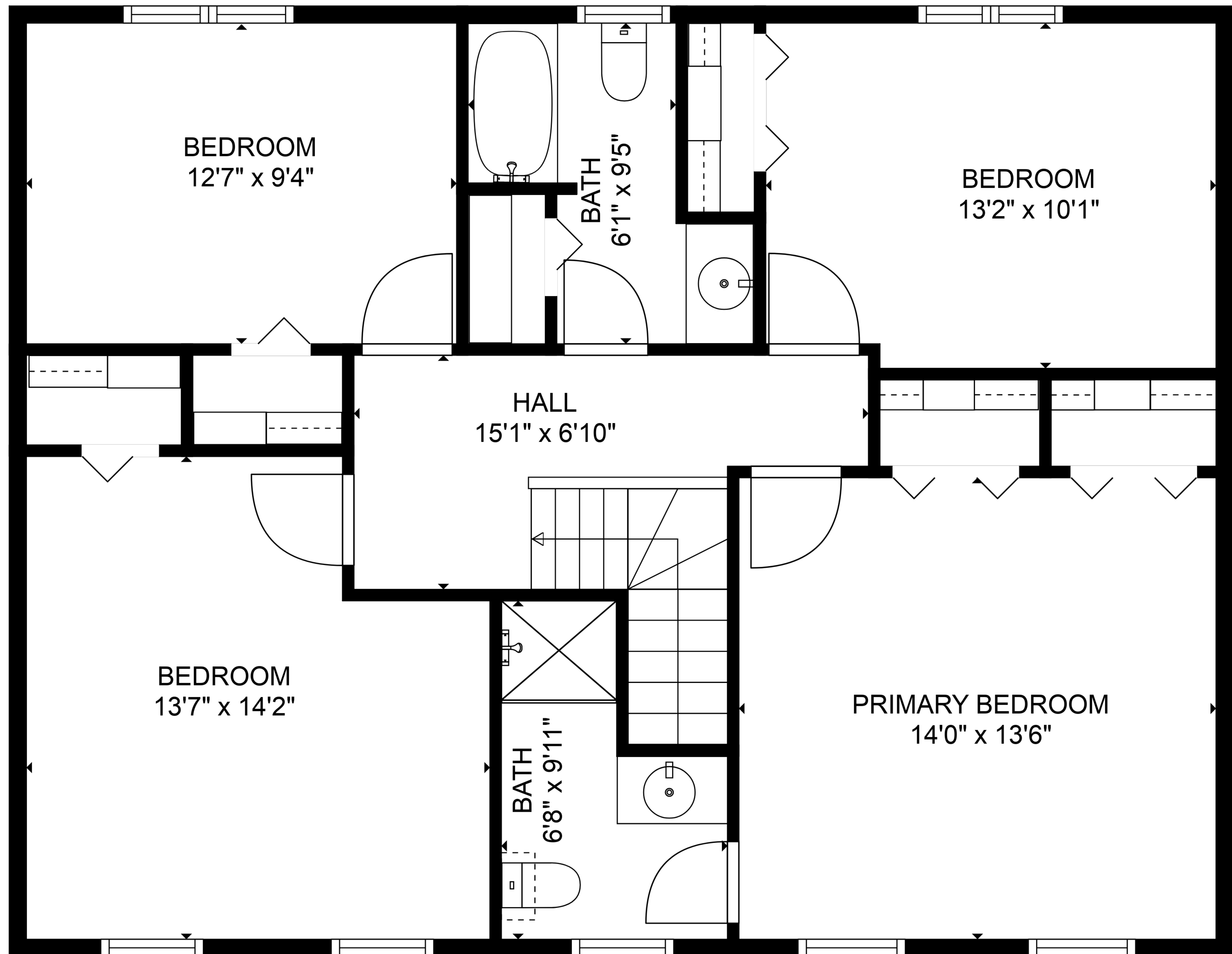


BASEMENT
20'7" x 26'10"

GARAGE
23'1" x 26'10"



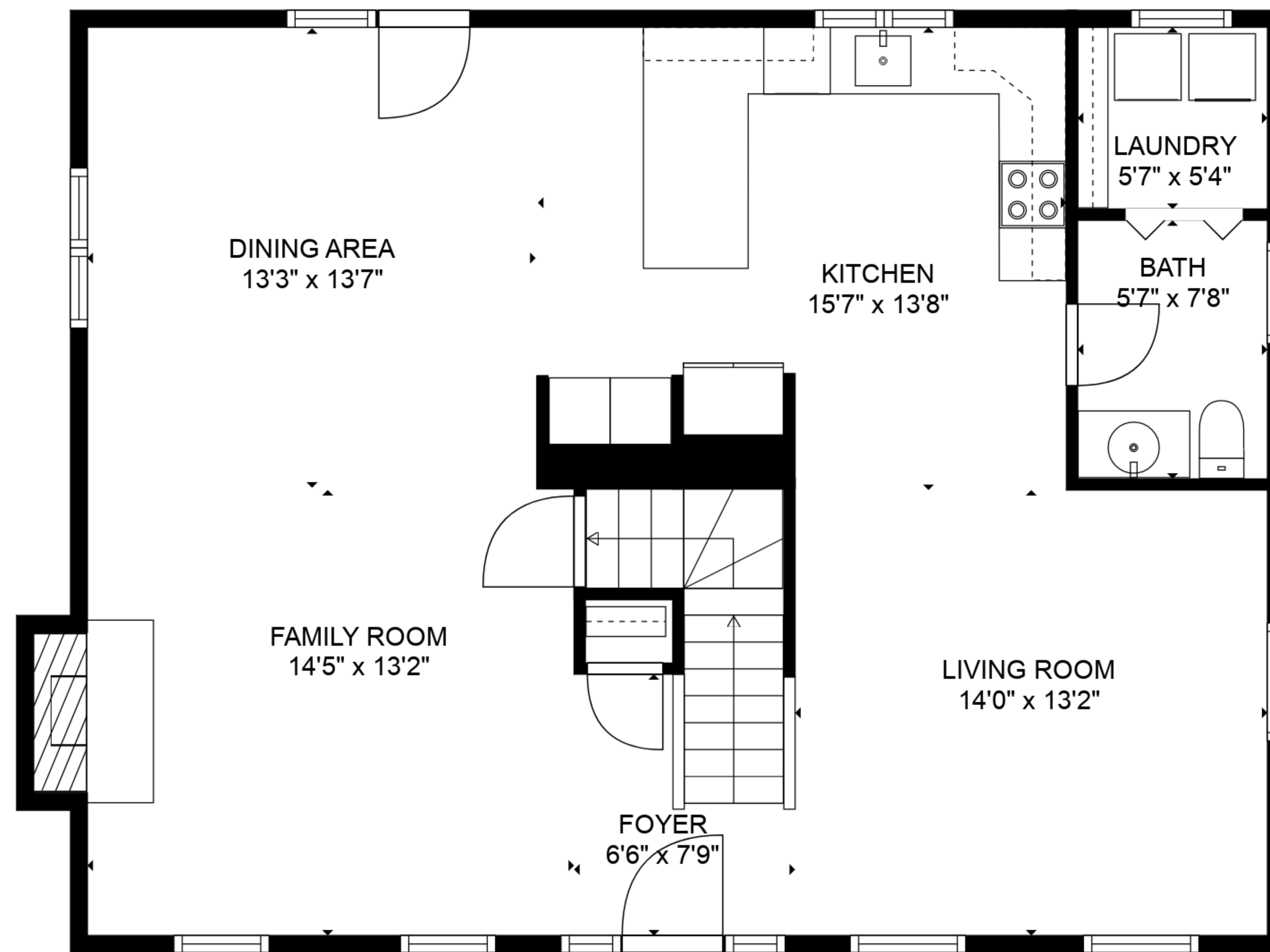


TOTAL: 1875 sq. ft

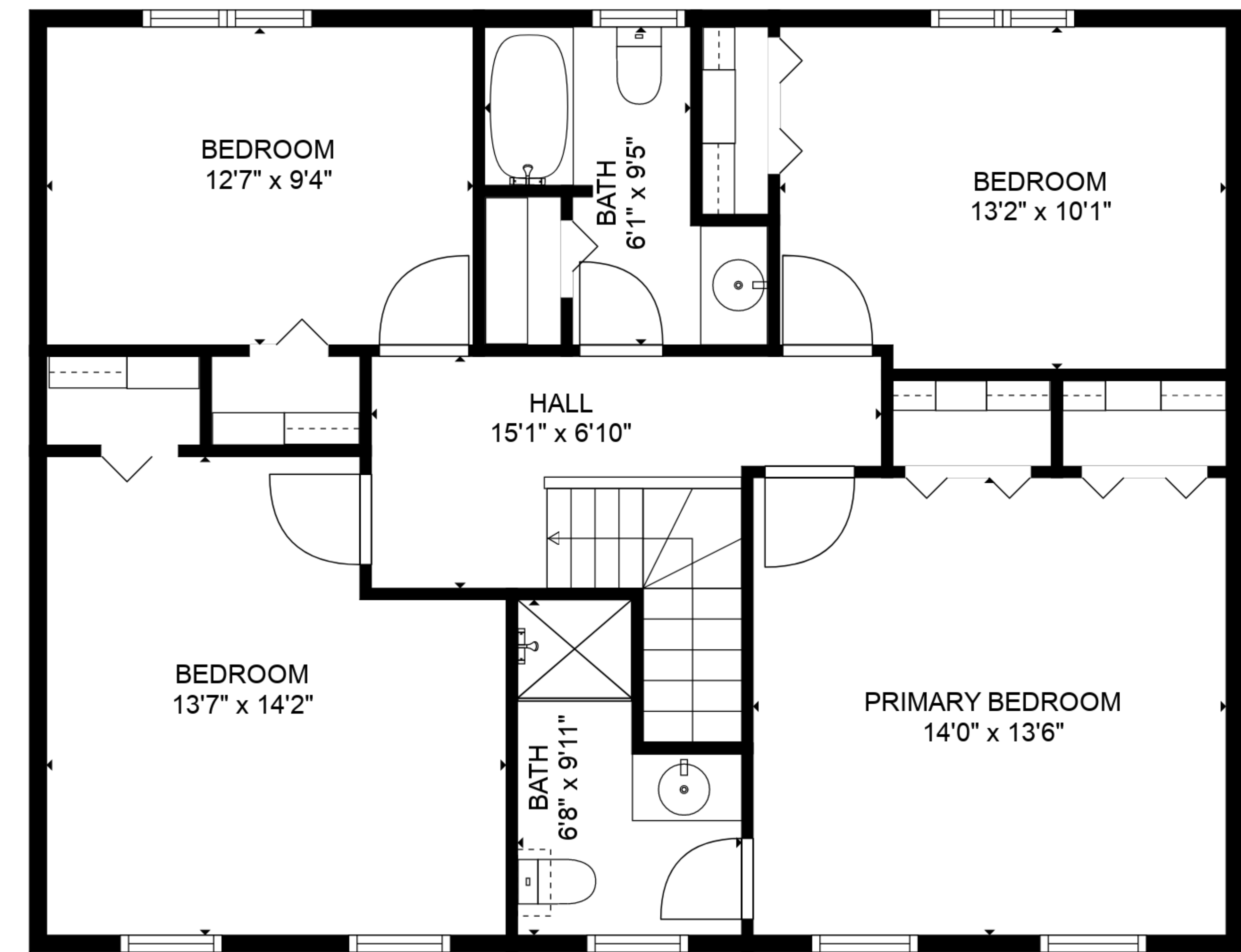
BELOW GROUND: 0 sq. ft, FLOOR 2: 939 sq. ft, FLOOR 3: 936 sq. ft

EXCLUDED AREAS: GARAGE: 524 sq. ft, BASEMENT: 457 sq. ft, FIREPLACE: 9 sq. ft

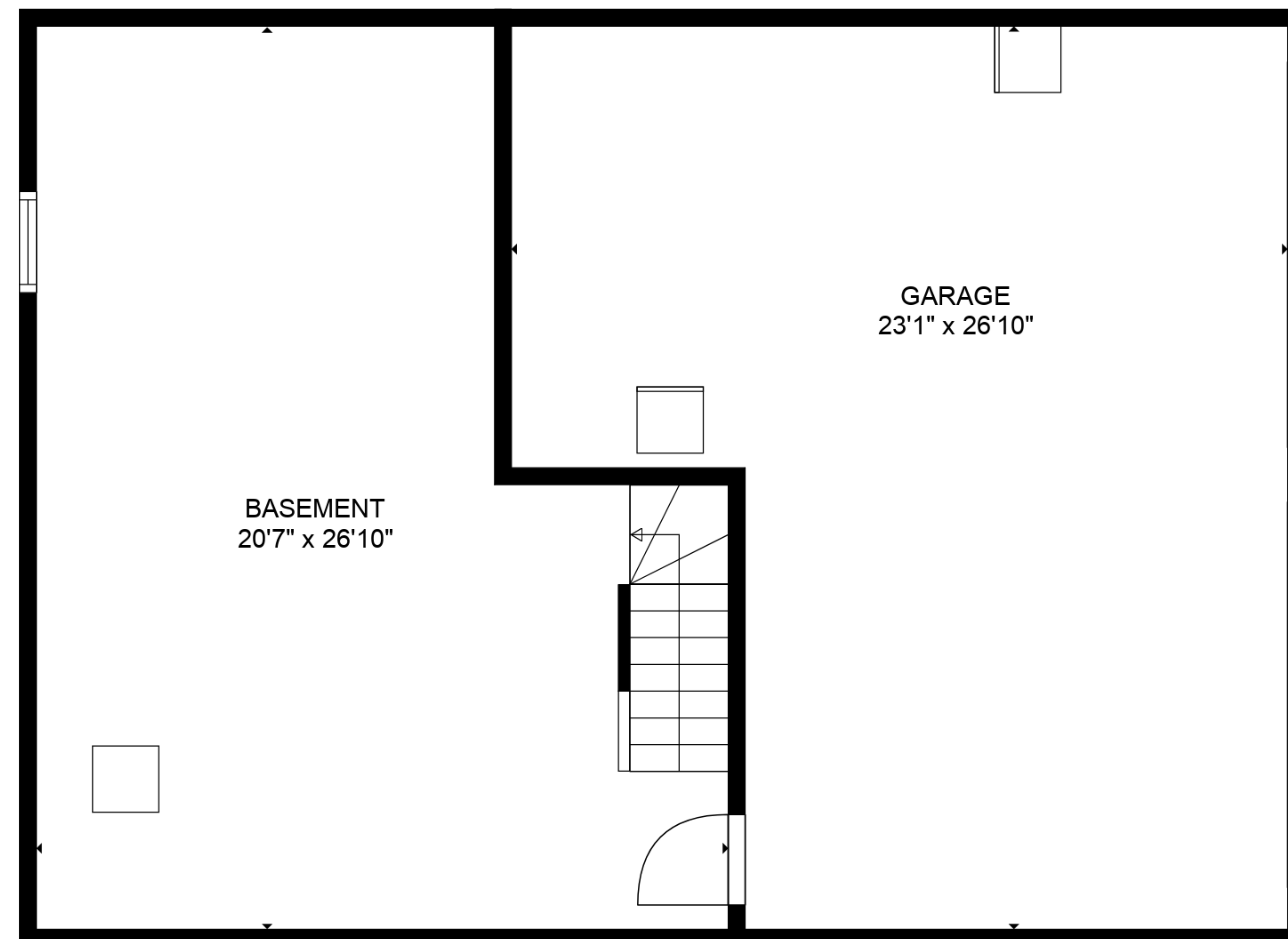
Floor Plans are provided by HouseSnappers.com. Measurements are deemed highly reliable but not guaranteed.



FLOOR 2



FLOOR 3



FLOOR 1