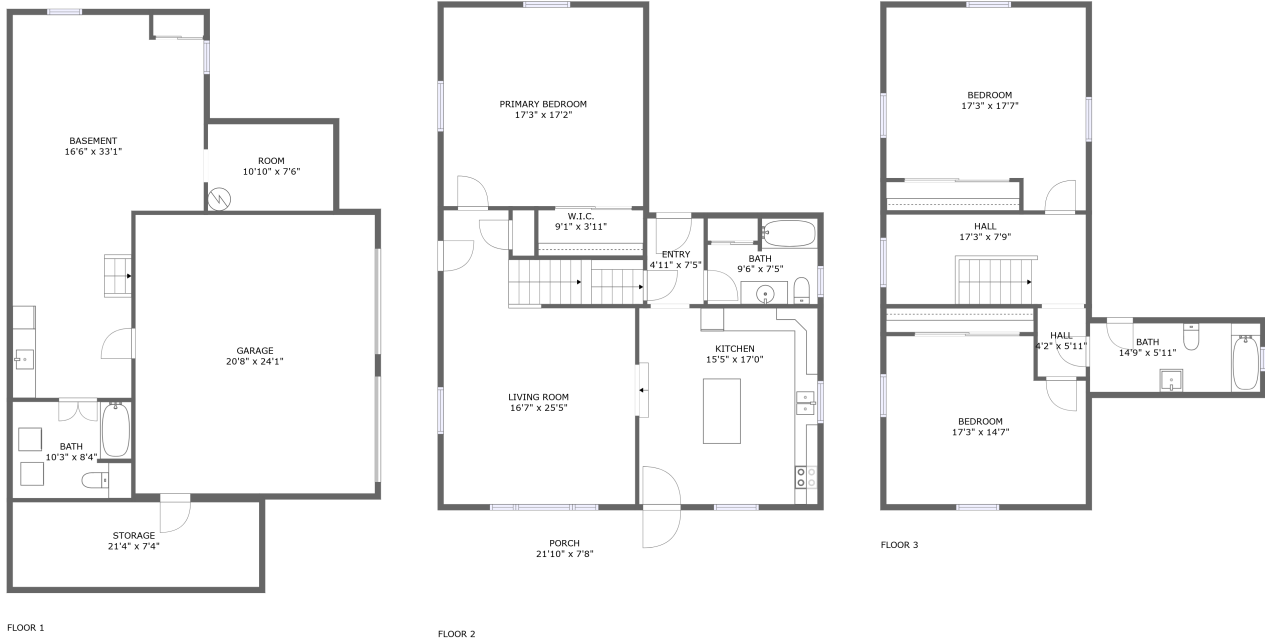


# Home Data Report

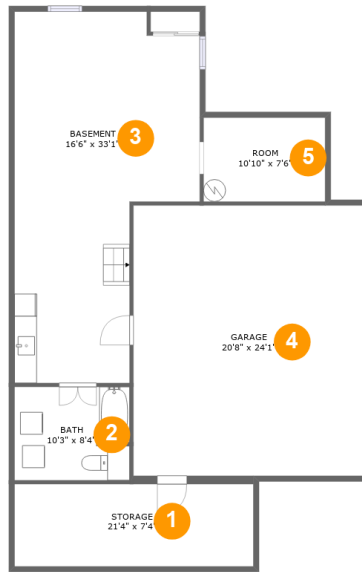
**111 Ietto Drive, Shanor-Northvue, Butler, Butler County, Pennsylvania, United States, 16001**



## Property Summary

**1** garages    **3** bedrooms    **3** bathrooms    **0** half baths

**3** floors    **2,097** Gross Living Area sqft    **3,648** total sqft



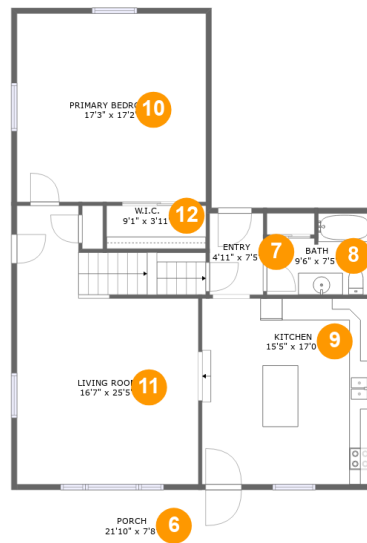
## Room Dimensions

Floor 1

Total sqft: 1383

Living area: 0

#	Room name	Dimensions	Area (sqft)	Counted as Living Area
1	Storage	21'4" x 7'4"	157 sq. ft	No
2	Bath	10'3" x 8'4"	85 sq. ft	No
3	Basement	16'6" x 33'1"	436 sq. ft	No
4	Garage	20'8" x 24'1"	499 sq. ft	No
5	Room	10'10" x 7'6"	81 sq. ft	No



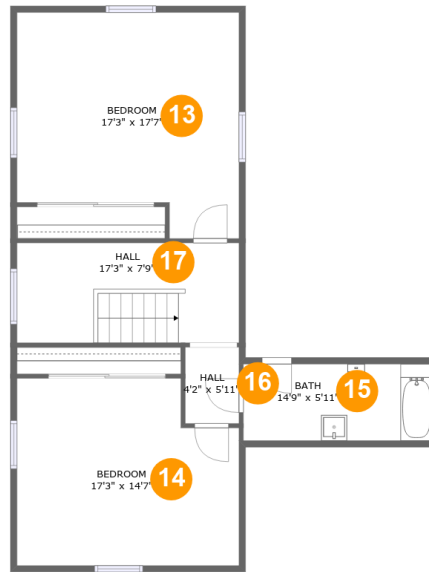
## Room Dimensions

**Floor 2**

**Total sqft: 1358**

**Living area: 1190**

#	Room name	Dimensions	Area (sqft)	Counted as Living Area
6	Porch	21'10" x 7'8"	168 sq. ft	No
7	Entry	4'11" x 7'5"	36 sq. ft	Yes
8	Bath	9'6" x 7'5"	60 sq. ft	Yes
9	Kitchen	15'5" x 17'0"	262 sq. ft	Yes
10	Primary Bedroom	17'3" x 17'2"	297 sq. ft	Yes
11	Living Room	16'7" x 25'5"	374 sq. ft	Yes
12	W.i.c.	9'1" x 3'11"	36 sq. ft	Yes



## Room Dimensions

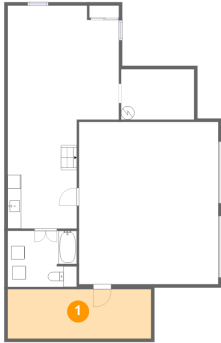
**Floor 3**

**Total sqft: 907**

**Living area: 907**

#	Room name	Dimensions	Area (sqft)	Counted as Living Area
13	Bedroom	17'3" x 17'7"	270 sq. ft	Yes
14	Bedroom	17'3" x 14'7"	234 sq. ft	Yes
15	Bath	14'9" x 5'11"	88 sq. ft	Yes
16	Hall	4'2" x 5'11"	25 sq. ft	Yes
17	Hall	17'3" x 7'9"	134 sq. ft	Yes

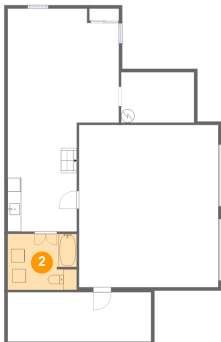
**1 Floor 1 - Storage**



Dimensions: 21'4" x 7'4"  
Area: 157 sq. ft  
Counted as Living Area: No

Heated: No  
Finished: No  
Enclosed: No  
Contiguous: Yes  
Permitted: Yes  
Wet Space: No  
Addition: No  
Conversion: No

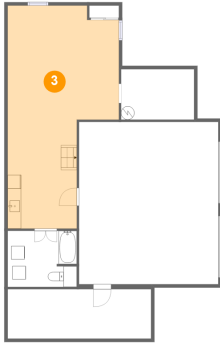
**2 Floor 1 - Bath**



Dimensions: 10'3" x 8'4"  
Area: 85 sq. ft  
Counted as Living Area: No

Heated: Yes  
Finished: No  
Enclosed: Yes  
Contiguous: Yes  
Permitted: Yes  
Wet Space: Yes  
Addition: No  
Conversion: No

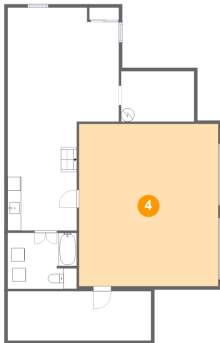
**3 Floor 1 - Basement**



Dimensions: 16'6" x 33'1"  
Area: 436 sq. ft  
Counted as Living Area: No

Heated: No  
Finished: No  
Enclosed: Yes  
Contiguous: Yes  
Permitted: Yes  
Wet Space: No  
Addition: No  
Conversion: No

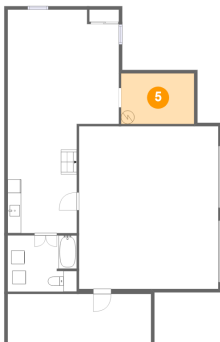
**4 Floor 1 - Garage**



Dimensions: 20'8" x 24'1"  
Area: 499 sq. ft  
Counted as Living Area: No

Heated: No  
Finished: No  
Enclosed: Yes  
Contiguous: Yes  
Permitted: Yes  
Wet Space: No  
Addition: No  
Conversion: No

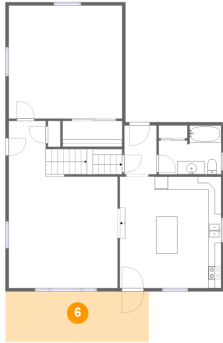
**5 Floor 1 - Room**



Dimensions: 10'10" x 7'6"  
Area: 81 sq. ft  
Counted as Living Area: No

Heated: Yes  
Finished: No  
Enclosed: Yes  
Contiguous: Yes  
Permitted: Yes  
Wet Space: No  
Addition: No  
Conversion: No

**6 Floor 2 - Porch**



Dimensions: 21'10" x 7'8"  
Area: 168 sq. ft  
Counted as Living Area: No

Heated: No  
Finished: Yes  
Enclosed: No  
Contiguous: Yes  
Permitted: Yes  
Wet Space: No  
Addition: No  
Conversion: No

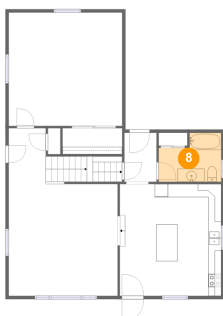
**7 Floor 2 - Entry**



Dimensions: 4'11" x 7'5"  
Area: 36 sq. ft  
Counted as Living Area:  
Yes

Heated: Yes  
Finished: Yes  
Enclosed: Yes  
Contiguous:  
Yes  
Permitted: Yes  
Wet Space: No  
Addition: No  
Conversion: No

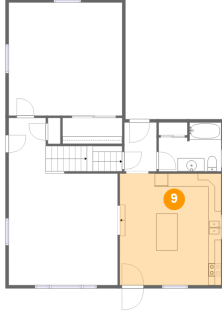
**8 Floor 2 - Bath**



Dimensions: 9'6" x 7'5"  
Area: 60 sq. ft  
Counted as Living Area:  
Yes

Heated: Yes  
Finished: Yes  
Enclosed: Yes  
Contiguous:  
Yes  
Permitted: Yes  
Wet Space: Yes  
Addition: No  
Conversion: No

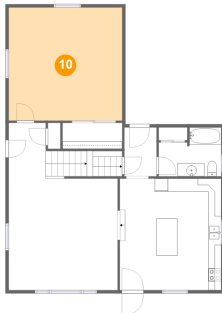
**9 Floor 2 - Kitchen**



Dimensions: 15'5" x 17'0"  
Area: 262 sq. ft  
Counted as Living Area:  
Yes

Heated: Yes  
Finished: Yes  
Enclosed: Yes  
Contiguous:  
Yes  
Permitted: Yes  
Wet Space: No  
Addition: No  
Conversion: No

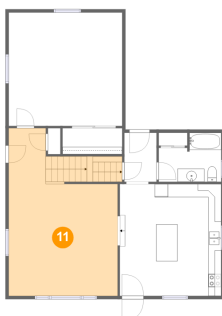
**10 Floor 2 - Primary Bedroom**



Dimensions: 17'3" x 17'2"  
Area: 297 sq. ft  
Counted as Living Area:  
Yes

Heated: Yes  
Finished: Yes  
Enclosed: Yes  
Contiguous:  
Yes  
Permitted: Yes  
Wet Space: No  
Addition: No  
Conversion: No

**11 Floor 2 - Living Room**

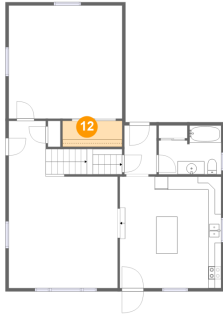


Dimensions: 16'7" x 25'5"  
Area: 374 sq. ft  
Counted as Living Area:  
Yes

Heated: Yes  
Finished: Yes  
Enclosed: Yes  
Contiguous:  
Yes  
Permitted: Yes  
Wet Space: No  
Addition: No  
Conversion: No



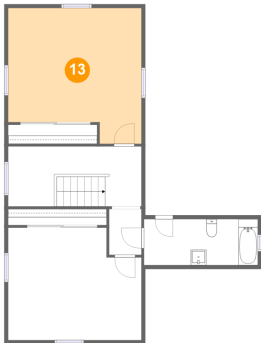
**12** Floor 2 - W.i.c.



Dimensions: 9'1" x 3'11"  
Area: 36 sq. ft  
Counted as Living Area:  
Yes

Heated: Yes  
Finished: Yes  
Enclosed: Yes  
Contiguous:  
Yes  
Permitted: Yes  
Wet Space: No  
Addition: No  
Conversion: No

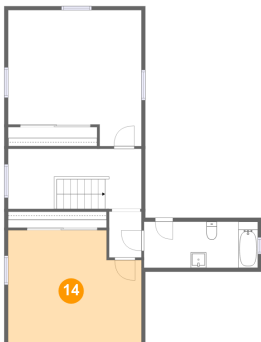
**13** Floor 3 - Bedroom



Dimensions: 17'3" x 17'7"  
Area: 270 sq. ft  
Counted as Living Area:  
Yes

Heated: Yes  
Finished: Yes  
Enclosed: Yes  
Contiguous:  
Yes  
Permitted: Yes  
Wet Space: No  
Addition: No  
Conversion: No

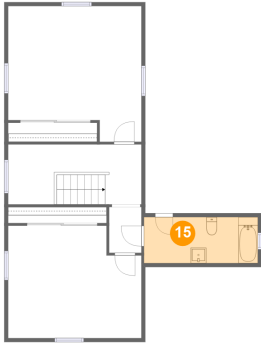
**14** Floor 3 - Bedroom



Dimensions: 17'3" x 14'7"  
Area: 234 sq. ft  
Counted as Living Area:  
Yes

Heated: Yes  
Finished: Yes  
Enclosed: Yes  
Contiguous:  
Yes  
Permitted: Yes  
Wet Space: No  
Addition: No  
Conversion: No

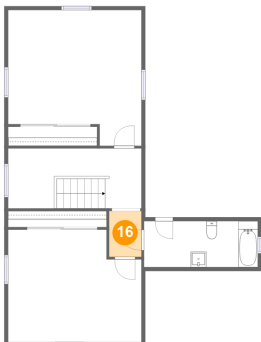
**15** Floor 3 - Bath



Dimensions: 14'9" x 5'11"  
Area: 88 sq. ft  
Counted as Living Area:  
Yes

Heated: Yes  
Finished: Yes  
Enclosed: Yes  
Contiguous:  
Yes  
Permitted: Yes  
Wet Space: Yes  
Addition: No  
Conversion: No

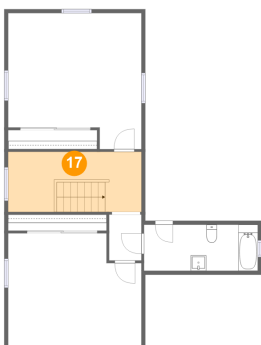
**16** Floor 3 - Hall



Dimensions: 4'2" x 5'11"  
Area: 25 sq. ft  
Counted as Living Area:  
Yes

Heated: Yes  
Finished: Yes  
Enclosed: Yes  
Contiguous:  
Yes  
Permitted: Yes  
Wet Space: No  
Addition: No  
Conversion: No

**17** Floor 3 - Hall



Dimensions: 17'3" x 7'9"  
Area: 134 sq. ft  
Counted as Living Area:  
Yes

Heated: Yes  
Finished: Yes  
Enclosed: Yes  
Contiguous:  
Yes  
Permitted: Yes  
Wet Space: No  
Addition: No  
Conversion: No