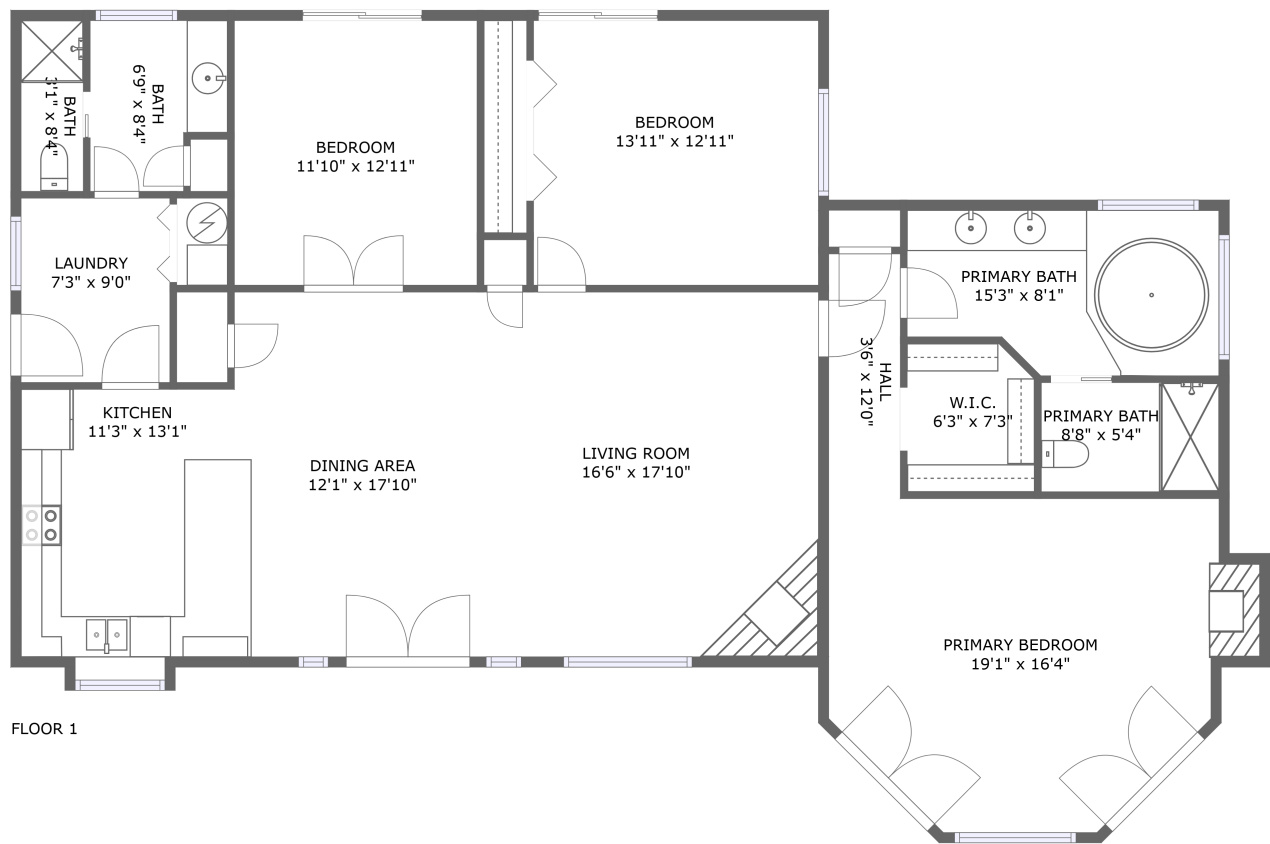
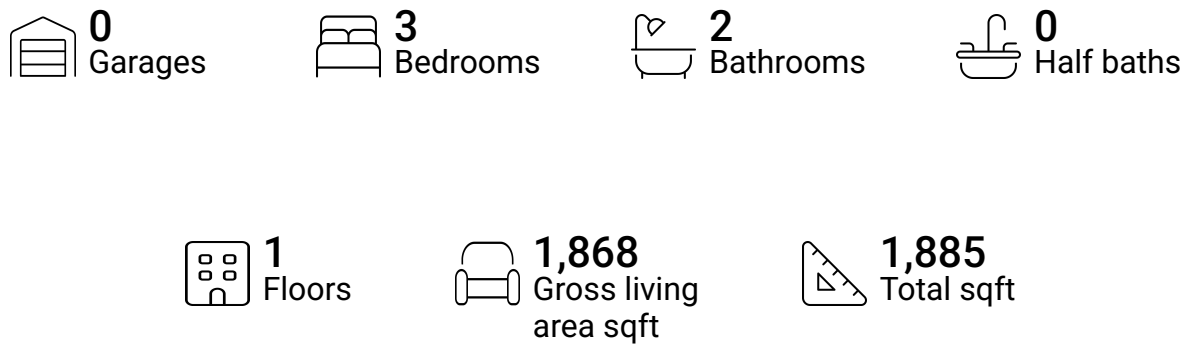


Home report

341 West Mountain View Road, Camano, Camano Island, Island
County, Washington, United States, 98282

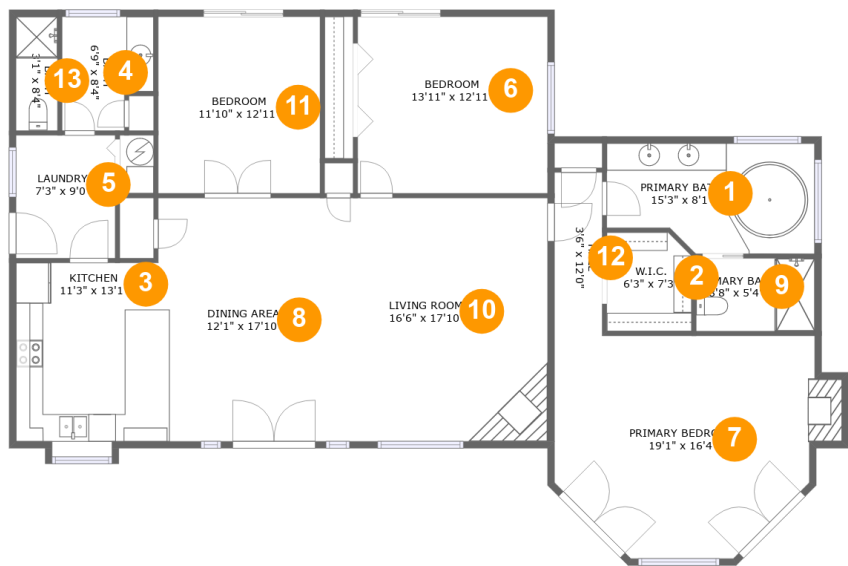


Property summary



Home report

341 West Mountain View Road, Camano, Camano Island, Island County, Washington, United States, 98282



Room dimensions

Floor 1 Total sqft: 1885 Living area: 1868

#		Dimensions	sqft	Counted as living area
1	Primary Bath	15'3" x 8'1"	113 sq. ft	Yes
2	W.I.C.	6'3" x 7'3"	44 sq. ft	Yes
3	Kitchen	11'3" x 13'1"	143 sq. ft	Yes
4	Bath	6'9" x 8'4"	50 sq. ft	Yes
5	Laundry	7'3" x 9'0"	66 sq. ft	Yes
6	Bedroom	13'11" x 12'11"	180 sq. ft	Yes
7	Primary Bedroom	19'1" x 16'4"	286 sq. ft	Yes
8	Dining Area	12'1" x 17'10"	209 sq. ft	Yes
9	Primary Bath	8'8" x 5'4"	46 sq. ft	Yes
10	Living Room	16'6" x 17'10"	294 sq. ft	Yes
11	Bedroom	11'10" x 12'11"	154 sq. ft	Yes

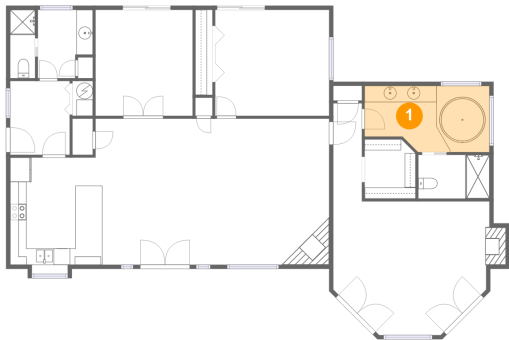
Home report

341 West Mountain View Road, Camano, Camano Island, Island
County, Washington, United States, 98282

#		Dimensions	sqft	Counted as living area
12	Hall	3'6" x 12'0"	42 sq. ft	Yes
13	Bath	3'1" x 8'4"	25 sq. ft	Yes

341 West Mountain View Road, Camano, Camano Island, Island
County, Washington, United States, 98282

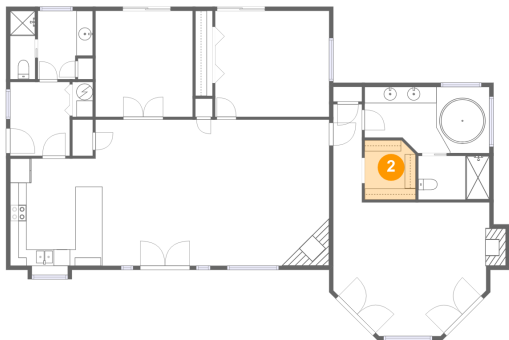
1 Floor 1 - Primary Bath



Dimensions: 15'3" x 8'1"
Area: 113 sq. ft
Counted as living area: Yes

Heated: Yes
Finished: Yes
Enclosed: Yes
Contiguous: Yes
Permitted: Yes
Wet space: Yes
Addition: No
Conversion: No

2 Floor 1 - W.I.C.

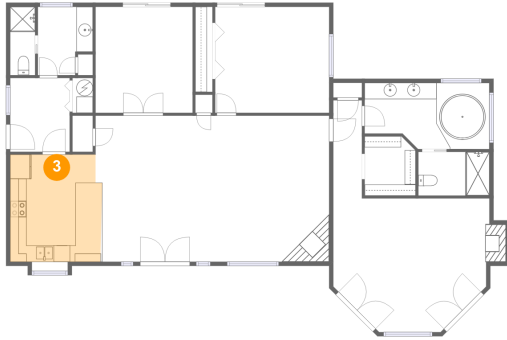


Dimensions: 6'3" x 7'3"
Area: 44 sq. ft
Counted as living area: Yes

Heated: Yes
Finished: Yes
Enclosed: Yes
Contiguous: Yes
Permitted: Yes
Wet space: No
Addition: No
Conversion: No

341 West Mountain View Road, Camano, Camano Island, Island
County, Washington, United States, 98282

3 Floor 1 - Kitchen



Dimensions: 11'3" x 13'1"
Area: 143 sq. ft
Counted as living area: Yes

Heated: Yes
Finished: Yes
Enclosed: Yes
Contiguous: Yes
Permitted: Yes
Wet space: No
Addition: No
Conversion: No

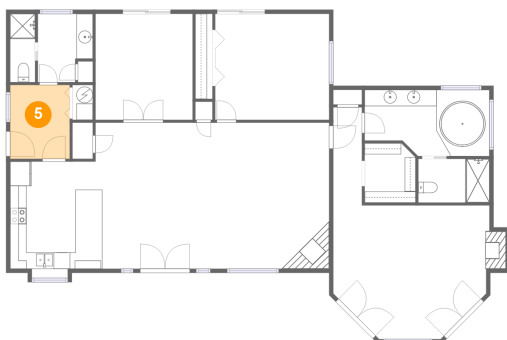
4 Floor 1 - Bath



Dimensions: 6'9" x 8'4"
Area: 50 sq. ft
Counted as living area: Yes

Heated: Yes
Finished: Yes
Enclosed: Yes
Contiguous: Yes
Permitted: Yes
Wet space: Yes
Addition: No
Conversion: No

5 Floor 1 - Laundry

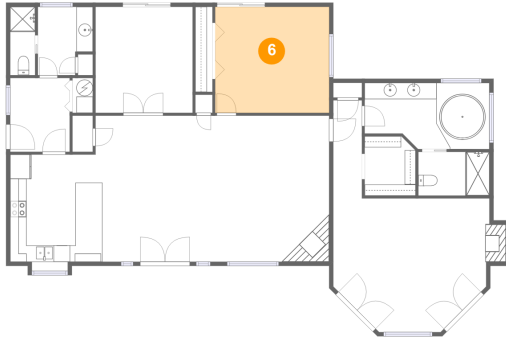


Dimensions: 7'3" x 9'0"
Area: 66 sq. ft
Counted as living area: Yes

Heated: Yes
Finished: Yes
Enclosed: Yes
Contiguous: Yes
Permitted: Yes
Wet space: No
Addition: No
Conversion: No

341 West Mountain View Road, Camano, Camano Island, Island
County, Washington, United States, 98282

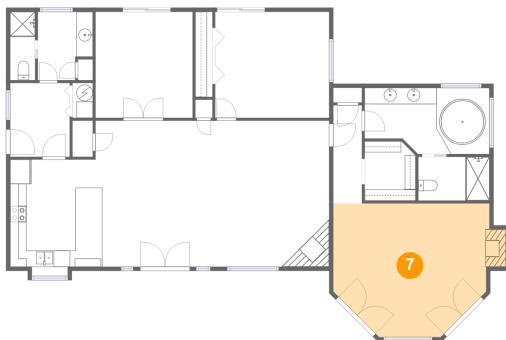
6 Floor 1 - Bedroom



Dimensions: 13'11" x 12'11"
Area: 180 sq. ft
Counted as living area: Yes

Heated: Yes
Finished: Yes
Enclosed: Yes
Contiguous: Yes
Permitted: Yes
Wet space: No
Addition: No
Conversion: No

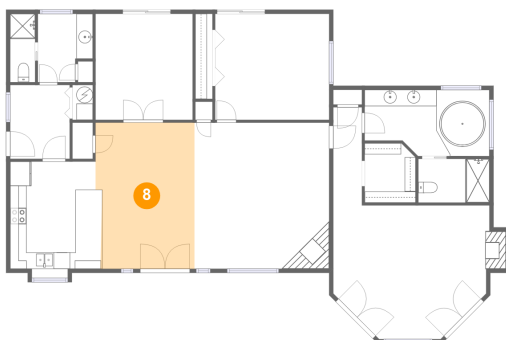
7 Floor 1 - Primary Bedroom



Dimensions: 19'1" x 16'4"
Area: 286 sq. ft
Counted as living area: Yes

Heated: Yes
Finished: Yes
Enclosed: Yes
Contiguous: Yes
Permitted: Yes
Wet space: No
Addition: No
Conversion: No

8 Floor 1 - Dining Area

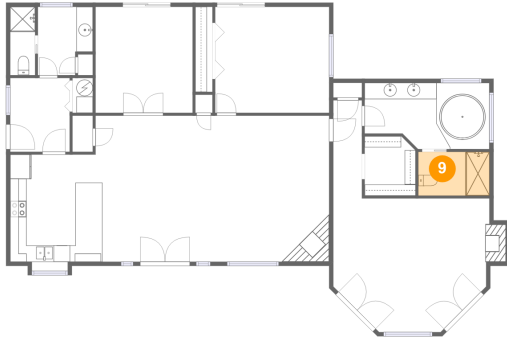


Dimensions: 12'1" x 17'10"
Area: 209 sq. ft
Counted as living area: Yes

Heated: Yes
Finished: Yes
Enclosed: Yes
Contiguous: Yes
Permitted: Yes
Wet space: No
Addition: No
Conversion: No

341 West Mountain View Road, Camano, Camano Island, Island
County, Washington, United States, 98282

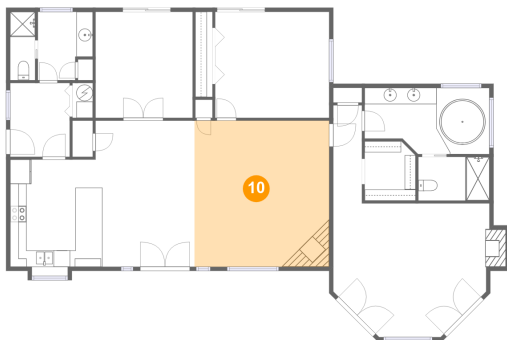
9 Floor 1 - Primary Bath



Dimensions: 8'8" x 5'4"
Area: 46 sq. ft
Counted as living area: Yes

Heated: Yes
Finished: Yes
Enclosed: Yes
Contiguous: Yes
Permitted: Yes
Wet space: Yes
Addition: No
Conversion: No

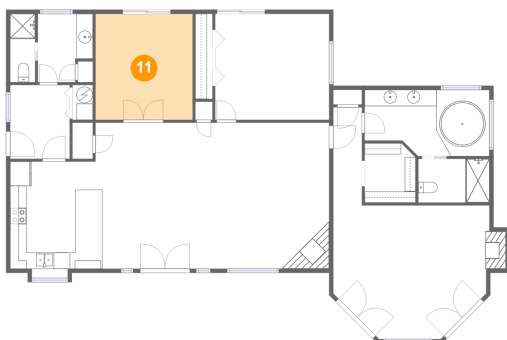
10 Floor 1 - Living Room



Dimensions: 16'6" x 17'10"
Area: 294 sq. ft
Counted as living area: Yes

Heated: Yes
Finished: Yes
Enclosed: Yes
Contiguous: Yes
Permitted: Yes
Wet space: No
Addition: No
Conversion: No

11 Floor 1 - Bedroom



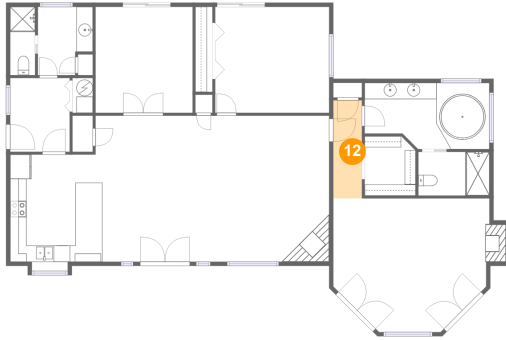
Dimensions: 11'10" x 12'11"
Area: 154 sq. ft
Counted as living area: Yes

Heated: Yes
Finished: Yes
Enclosed: Yes
Contiguous: Yes
Permitted: Yes
Wet space: No
Addition: No
Conversion: No

Home report

341 West Mountain View Road, Camano, Camano Island, Island
County, Washington, United States, 98282

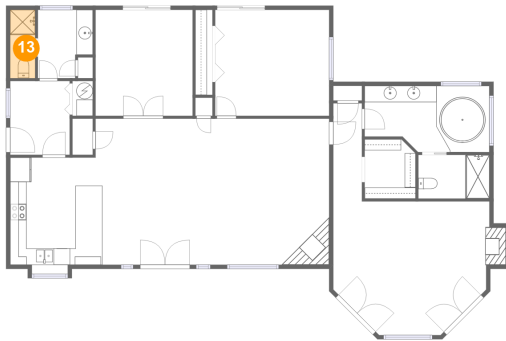
12 Floor 1 - Hall



Dimensions: 3'6" x 12'0"
Area: 42 sq. ft
Counted as living area: Yes

Heated: Yes
Finished: Yes
Enclosed: Yes
Contiguous: Yes
Permitted: Yes
Wet space: No
Addition: No
Conversion: No

13 Floor 1 - Bath



Dimensions: 3'1" x 8'4"
Area: 25 sq. ft
Counted as living area: Yes

Heated: Yes
Finished: Yes
Enclosed: Yes
Contiguous: Yes
Permitted: Yes
Wet space: Yes
Addition: No
Conversion: No