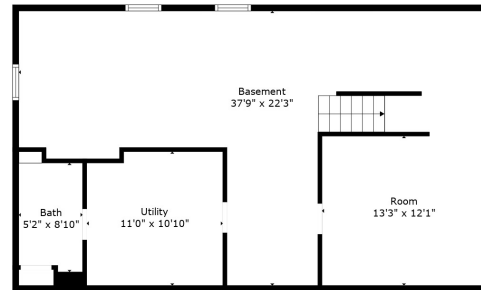


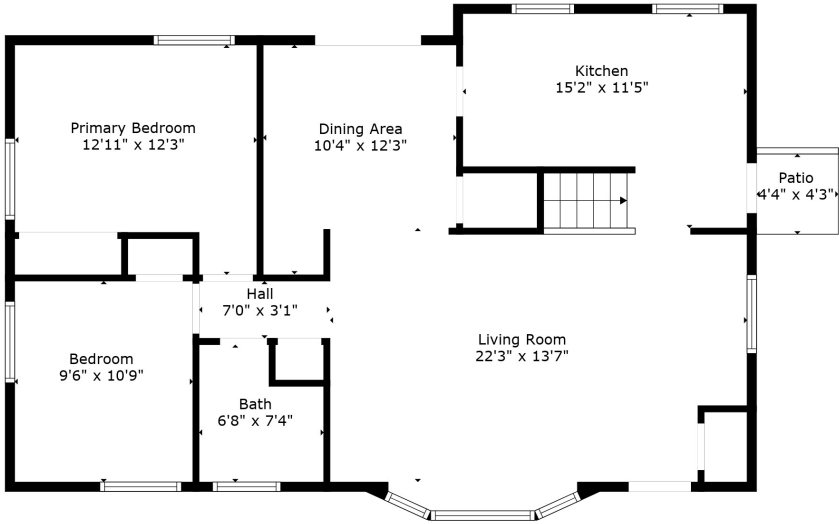
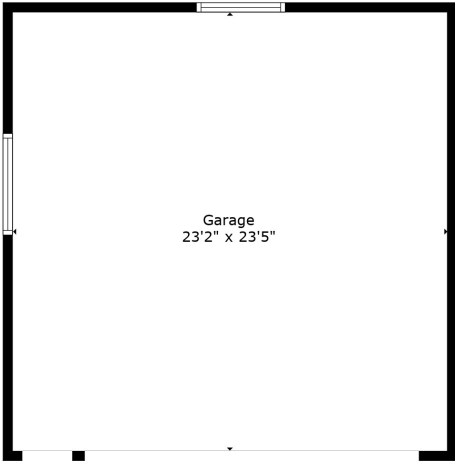
Floor 2



Floor 1

**TOTAL: 1780 sq. ft**  
 BELOW GROUND: 840 sq. ft, FLOOR 2: 940 sq. ft  
 EXCLUDED AREAS: GARAGE: 545 sq. ft, PATIO: 19 sq. ft, BAY WINDOW: 14 sq. ft

Created By Nurdy Photography. Calculations Deemed Highly Reliable But Not Guaranteed.

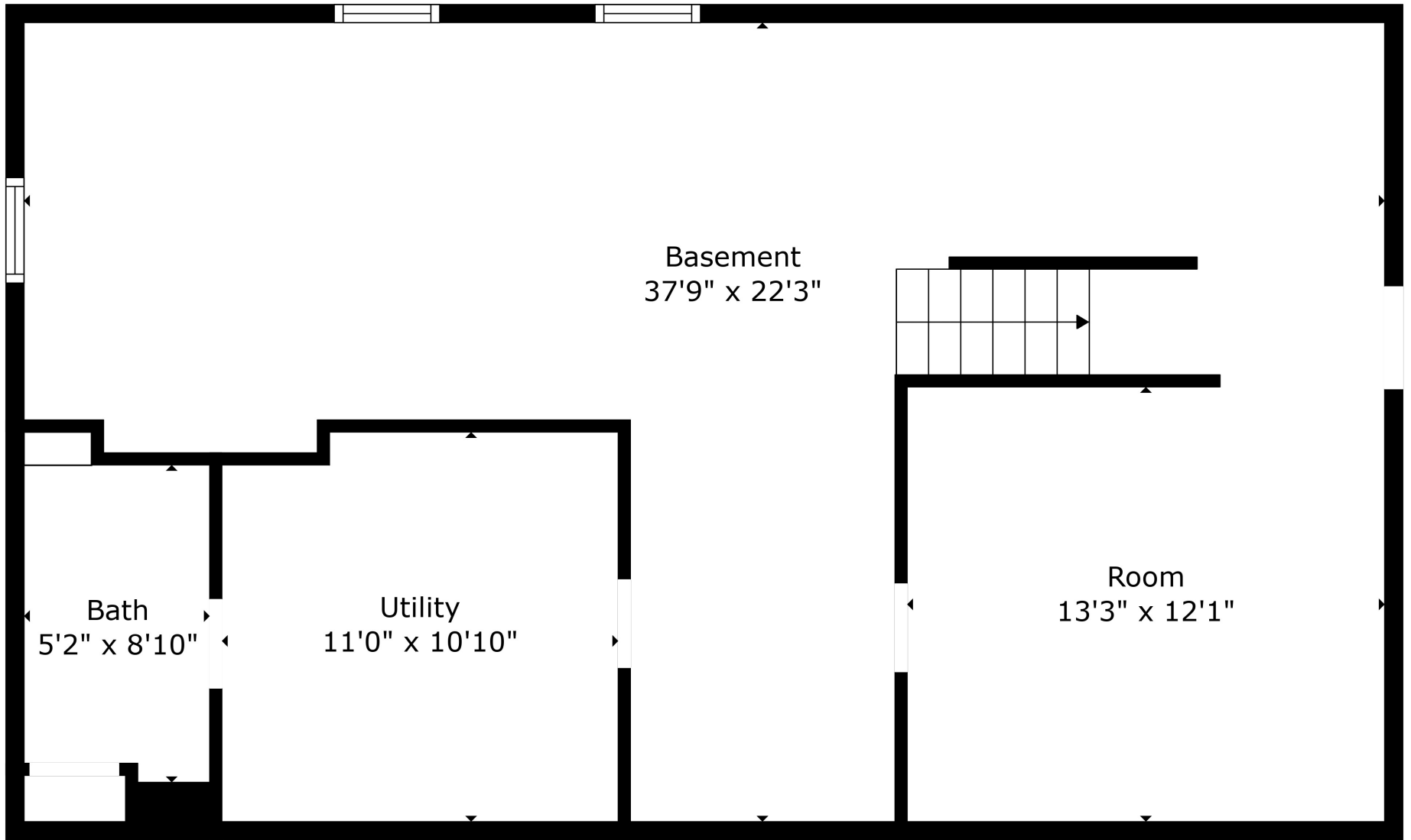


**TOTAL: 1780 sq. ft**

BELOW GROUND: 840 sq. ft, FLOOR 2: 940 sq. ft

EXCLUDED AREAS: GARAGE: 545 sq. ft, PATIO: 19 sq. ft, BAY WINDOW: 14 sq. ft

Created By Nurdy Photography. Calculations Deemed Highly Reliable But Not Guaranteed.



Basement  
37'9" x 22'3"

Bath  
5'2" x 8'10"

Utility  
11'0" x 10'10"

Room  
13'3" x 12'1"

**TOTAL: 1780 sq. ft**

BELOW GROUND: 840 sq. ft, FLOOR 2: 940 sq. ft

EXCLUDED AREAS: GARAGE: 545 sq. ft, PATIO: 19 sq. ft, BAY WINDOW: 14 sq. ft

Created By Nordy Photography. Calculations Deemed Highly Reliable But Not Guaranteed.