

Home data report

4505 Spruce Avenue, Shoreacres, Burlington, Halton County, Ontario, Canada, L7L 1M5



Total Area: 1764 sq. ft

Basement: 500 sq. ft, 1st Floor: 575 sq. ft, 2nd Floor: 581 sq. ft, 3rd Floor: 608 sq. ft

Excluded: Utility 81 sq. ft

Property summary

 **4** Floors

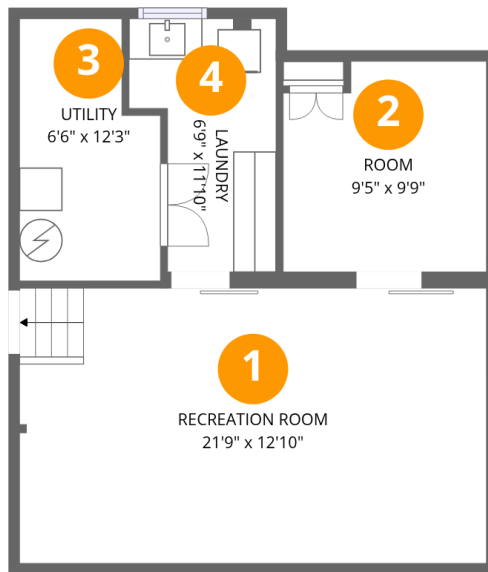
 **4** Bedrooms

 **3** Bathrooms

 **1** Half baths

Home data report

4505 Spruce Avenue, Shoreacres, Burlington, Halton County, Ontario, Canada, L7L 1M5



Room dimensions

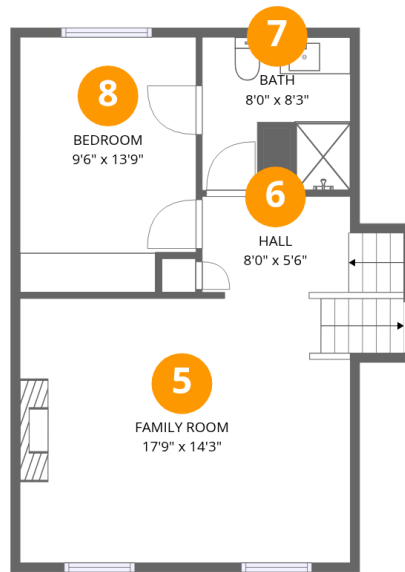
Floor 1 Below grade

Total:500sqft Excluded: 81sqft

#		Dimensions	sqft	Counted as living area
1	Recreation Room	21'9" x 12'10"	279 sq. ft	Yes
2	Room	9'5" x 9'9"	88 sq. ft	Yes
3	Utility	6'6" x 12'3"	72 sq. ft	No
4	Laundry	6'9" x 11'10"	67 sq. ft	Yes

Home data report

4505 Spruce Avenue, Shoreacres, Burlington, Halton County, Ontario, Canada, L7L 1M5



Room dimensions

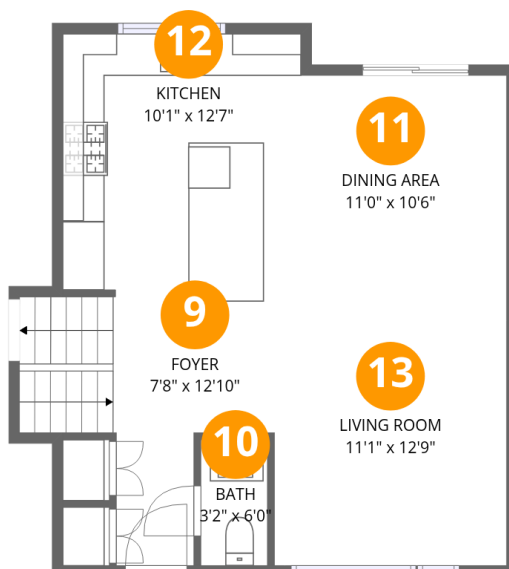
Floor 2

Total:575sqft Excluded: 0sqft

#		Dimensions	sqft	Counted as living area
5	Family Room	17'9" x 14'3"	263 sq. ft	Yes
6	Hall	8'0" x 5'6"	54 sq. ft	Yes
7	Bath	8'0" x 8'3"	58 sq. ft	Yes
8	Bedroom	9'6" x 13'9"	126 sq. ft	Yes

Home data report

4505 Spruce Avenue, Shoreacres, Burlington, Halton County, Ontario, Canada, L7L 1M5



Room dimensions

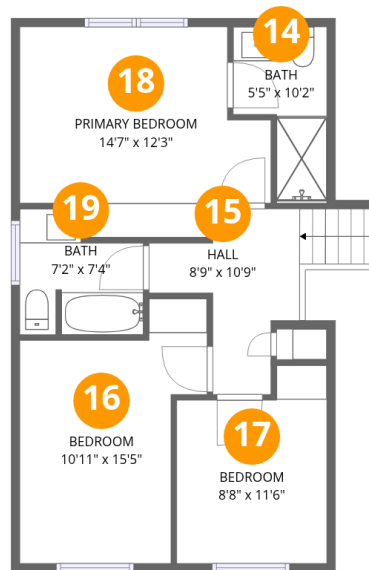
Floor 3

Total:581sqft Excluded: 0sqft

#		Dimensions	sqft	Counted as living area
9	Foyer	7'8" x 12'10"	102 sq. ft	Yes
10	Bath	3'2" x 6'0"	19 sq. ft	Yes
11	Dining Area	11'0" x 10'6"	120 sq. ft	Yes
12	Kitchen	10'1" x 12'7"	126 sq. ft	Yes
13	Living Room	11'1" x 12'9"	142 sq. ft	Yes

Home data report

4505 Spruce Avenue, Shoreacres, Burlington, Halton County, Ontario, Canada, L7L 1M5



Room dimensions

Floor 4

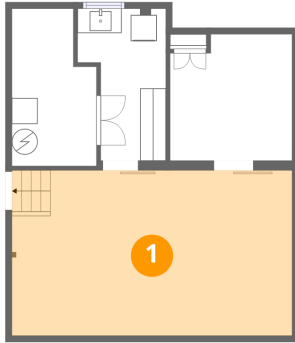
Total:608sqft

Excluded: 0sqft

#		Dimensions	sqft	Counted as living area
14	Bath	5'5" x 10'2"	43 sq. ft	Yes
15	Hall	8'9" x 10'9"	72 sq. ft	Yes
16	Bedroom	10'11" x 15'5"	129 sq. ft	Yes
17	Bedroom	8'8" x 11'6"	89 sq. ft	Yes
18	Primary Bedroom	14'7" x 12'3"	150 sq. ft	Yes
19	Bath	7'2" x 7'4"	44 sq. ft	Yes

4505 Spruce Avenue, Shoreacres, Burlington, Halton County,
Ontario, Canada, L7L 1M5

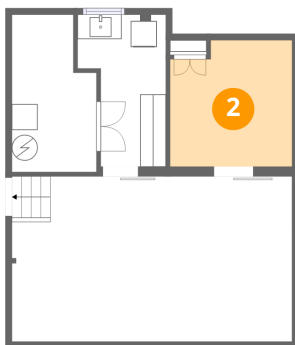
1 Floor 1 - Recreation Room



Dimensions: 21'9" x 12'10"
Area: 279 sq. ft
Counted as living area: Yes

Heated: Yes
Finished: Yes
Enclosed: Yes
Contiguous: Yes
Permitted: Yes
Wet space: No
Addition: No
Conversion: No

2 Floor 1 - Room

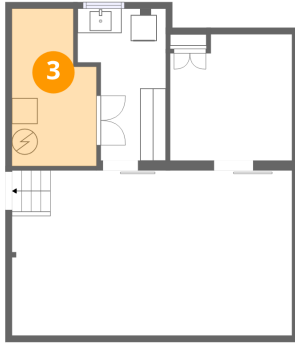


Dimensions: 9'5" x 9'9"
Area: 88 sq. ft
Counted as living area: Yes

Heated: Yes
Finished: Yes
Enclosed: Yes
Contiguous: Yes
Permitted: Yes
Wet space: No
Addition: No
Conversion: No

4505 Spruce Avenue, Shoreacres, Burlington, Halton County,
Ontario, Canada, L7L 1M5

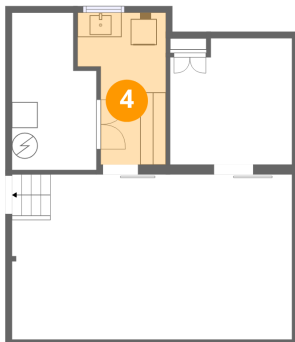
3 Floor 1 - Utility



Dimensions: 6'6" x 12'3"
Area: 72 sq. ft
Counted as living area: No

Heated: Yes
Finished: No
Enclosed: Yes
Contiguous: Yes
Permitted: Yes
Wet space: No
Addition: No
Conversion: No

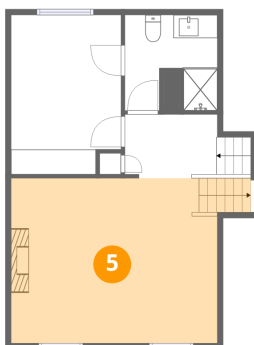
4 Floor 1 - Laundry



Dimensions: 6'9" x 11'10"
Area: 67 sq. ft
Counted as living area: Yes

Heated: Yes
Finished: Yes
Enclosed: Yes
Contiguous: Yes
Permitted: Yes
Wet space: No
Addition: No
Conversion: No

5 Floor 2 - Family Room

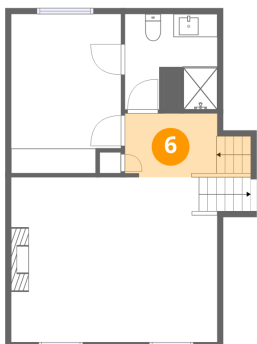


Dimensions: 17'9" x 14'3"
Area: 263 sq. ft
Counted as living area: Yes

Heated: Yes
Finished: Yes
Enclosed: Yes
Contiguous: Yes
Permitted: Yes
Wet space: No
Addition: No
Conversion: No

4505 Spruce Avenue, Shoreacres, Burlington, Halton County,
Ontario, Canada, L7L 1M5

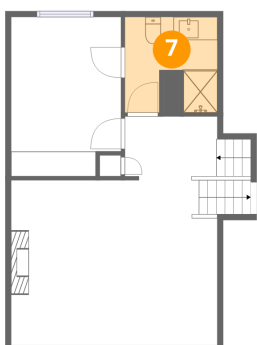
6 Floor 2 - Hall



Dimensions: 8'0" x 5'6"
Area: 54 sq. ft
Counted as living area: Yes

Heated: Yes
Finished: Yes
Enclosed: Yes
Contiguous: Yes
Permitted: Yes
Wet space: No
Addition: No
Conversion: No

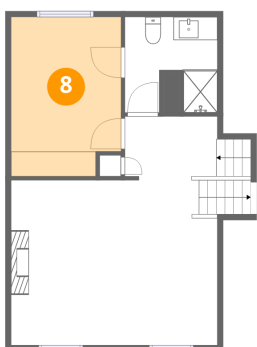
7 Floor 2 - Bath



Dimensions: 8'0" x 8'3"
Area: 58 sq. ft
Counted as living area: Yes

Heated: Yes
Finished: Yes
Enclosed: Yes
Contiguous: Yes
Permitted: Yes
Wet space: Yes
Addition: No
Conversion: No

8 Floor 2 - Bedroom



Dimensions: 9'6" x 13'9"
Area: 126 sq. ft
Counted as living area: Yes

Heated: Yes
Finished: Yes
Enclosed: Yes
Contiguous: Yes
Permitted: Yes
Wet space: No
Addition: No
Conversion: No

4505 Spruce Avenue, Shoreacres, Burlington, Halton County,
Ontario, Canada, L7L 1M5

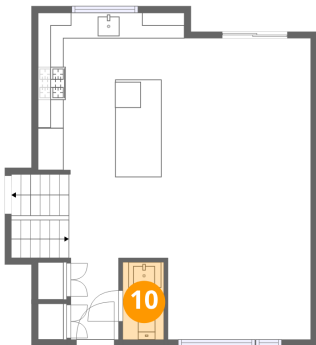
9 Floor 3 - Foyer



Dimensions: 7'8" x 12'10"
Area: 102 sq. ft
Counted as living area: Yes

Heated: Yes
Finished: Yes
Enclosed: Yes
Contiguous: Yes
Permitted: Yes
Wet space: No
Addition: No
Conversion: No

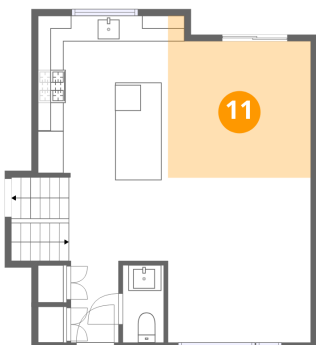
10 Floor 3 - Bath



Dimensions: 3'2" x 6'0"
Area: 19 sq. ft
Counted as living area: Yes

Heated: Yes
Finished: Yes
Enclosed: Yes
Contiguous: Yes
Permitted: Yes
Wet space: Yes
Addition: No
Conversion: No

11 Floor 3 - Dining Area

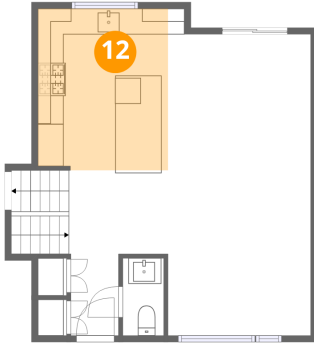


Dimensions: 11'0" x 10'6"
Area: 120 sq. ft
Counted as living area: Yes

Heated: Yes
Finished: Yes
Enclosed: Yes
Contiguous: Yes
Permitted: Yes
Wet space: No
Addition: No
Conversion: No

4505 Spruce Avenue, Shoreacres, Burlington, Halton County,
Ontario, Canada, L7L 1M5

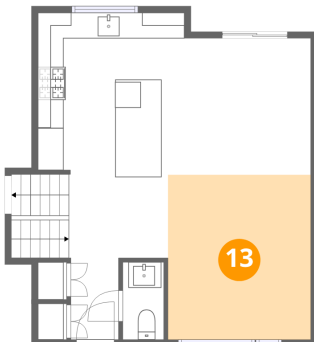
12 Floor 3 - Kitchen



Dimensions: 10'1" x 12'7"
Area: 126 sq. ft
Counted as living area: Yes

Heated: Yes
Finished: Yes
Enclosed: Yes
Contiguous: Yes
Permitted: Yes
Wet space: No
Addition: No
Conversion: No

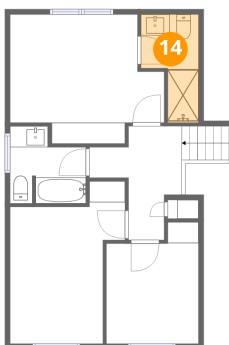
13 Floor 3 - Living Room



Dimensions: 11'1" x 12'9"
Area: 142 sq. ft
Counted as living area: Yes

Heated: Yes
Finished: Yes
Enclosed: Yes
Contiguous: Yes
Permitted: Yes
Wet space: No
Addition: No
Conversion: No

14 Floor 4 - Bath

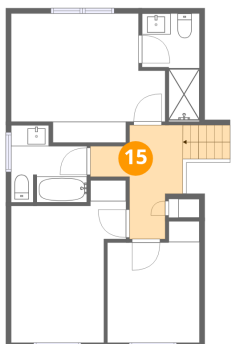


Dimensions: 5'5" x 10'2"
Area: 43 sq. ft
Counted as living area: Yes

Heated: Yes
Finished: Yes
Enclosed: Yes
Contiguous: Yes
Permitted: Yes
Wet space: Yes
Addition: No
Conversion: No

4505 Spruce Avenue, Shoreacres, Burlington, Halton County,
Ontario, Canada, L7L 1M5

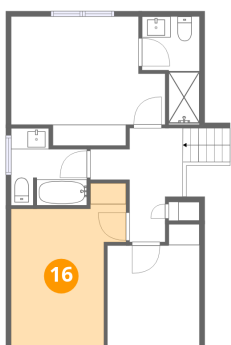
15 Floor 4 - Hall



Dimensions: 8'9" x 10'9"
Area: 72 sq. ft
Counted as living area: Yes

Heated: Yes
Finished: Yes
Enclosed: Yes
Contiguous: Yes
Permitted: Yes
Wet space: No
Addition: No
Conversion: No

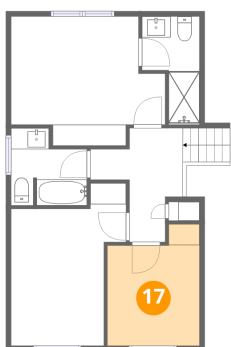
16 Floor 4 - Bedroom



Dimensions: 10'11" x 15'5"
Area: 129 sq. ft
Counted as living area: Yes

Heated: Yes
Finished: Yes
Enclosed: Yes
Contiguous: Yes
Permitted: Yes
Wet space: No
Addition: No
Conversion: No

17 Floor 4 - Bedroom

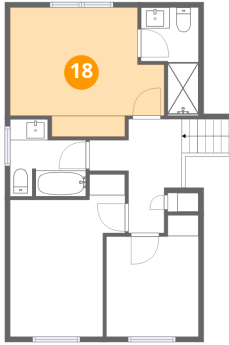


Dimensions: 8'8" x 11'6"
Area: 89 sq. ft
Counted as living area: Yes

Heated: Yes
Finished: Yes
Enclosed: Yes
Contiguous: Yes
Permitted: Yes
Wet space: No
Addition: No
Conversion: No

4505 Spruce Avenue, Shoreacres, Burlington, Halton County,
Ontario, Canada, L7L 1M5

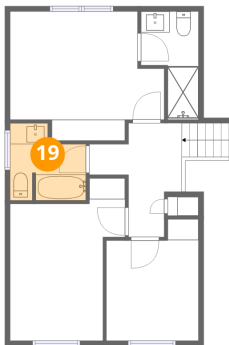
18 Floor 4 - Primary Bedroom



Dimensions: 14'7" x 12'3"
Area: 150 sq. ft
Counted as living area: Yes

Heated: Yes
Finished: Yes
Enclosed: Yes
Contiguous: Yes
Permitted: Yes
Wet space: No
Addition: No
Conversion: No

19 Floor 4 - Bath



Dimensions: 7'2" x 7'4"
Area: 44 sq. ft
Counted as living area: Yes

Heated: Yes
Finished: Yes
Enclosed: Yes
Contiguous: Yes
Permitted: Yes
Wet space: Yes
Addition: No
Conversion: No