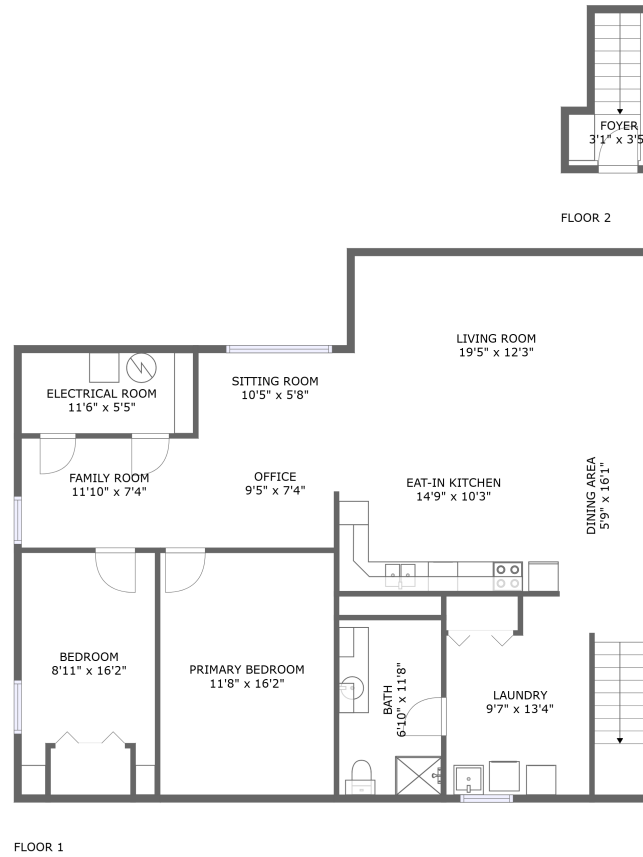



1819 Rosebella Avenue, Hunt Club Upper - Blossom Park- Timbermill, Gloucester, Ontario, Canada, K1T



Property summary

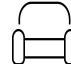
 **0** Garages

 **2** Bedrooms

 **1** Bathrooms

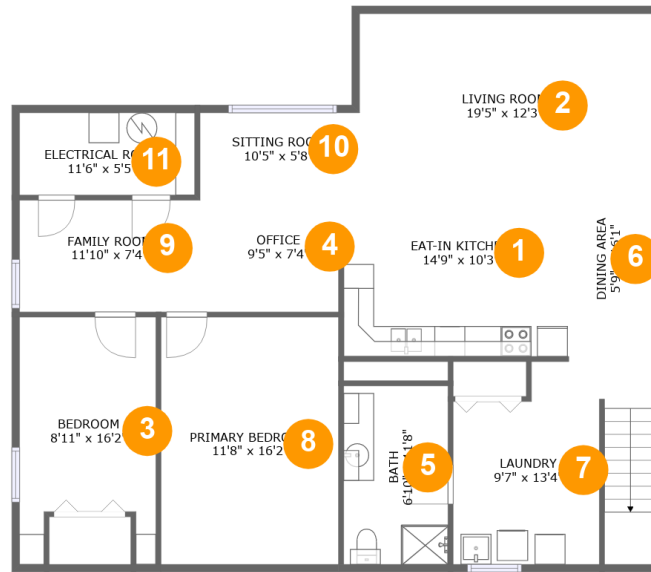
 **0** Half baths

 **2** Floors

 **1,427** Gross living area sqft

 **1,498** Total sqft

1819 Rosebella Avenue, Hunt Club Upper - Blossom Park- Timbermill, Gloucester, Ontario, Canada, K1T



Room dimensions

Floor 1

Total sqft: 1441

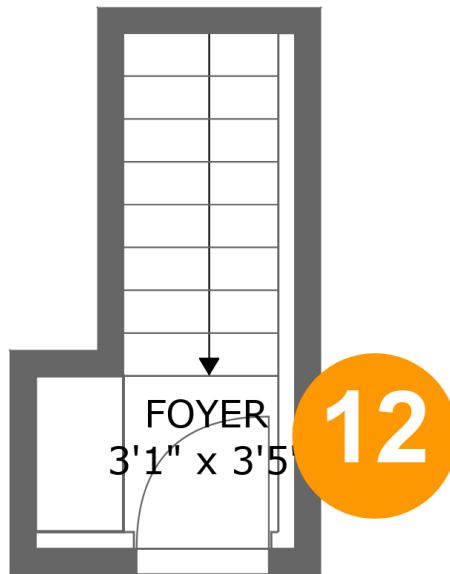
Living area: 1370

#		Dimensions	sqft	Counted as living area
1	Eat-in Kitchen	14'9" x 10'3"	151 sq. ft	Yes
2	Living Room	19'5" x 12'3"	224 sq. ft	Yes
3	Bedroom	8'11" x 16'2"	124 sq. ft	Yes
4	Office	9'5" x 7'4"	68 sq. ft	Yes
5	Bath	6'10" x 11'8"	80 sq. ft	Yes
6	Dining Area	5'9" x 16'1"	124 sq. ft	Yes
7	Laundry	9'7" x 13'4"	112 sq. ft	Yes
8	Primary Bedroom	11'8" x 16'2"	189 sq. ft	Yes
9	Family Room	11'10" x 7'4"	87 sq. ft	Yes
10	Sitting Room	10'5" x 5'8"	60 sq. ft	Yes
11	Electrical Room	11'6" x 5'5"	62 sq. ft	No

Scan captured on Wed, 26 Feb 2025 16:27:37 GMT

Information is calculated by Cubicasa technology deemed highly reliable but not guaranteed.

1819 Rosebella Avenue, Hunt Club Upper - Blossom Park- Timbermill, Gloucester, Ontario, Canada, K1T



Room dimensions

Floor 2

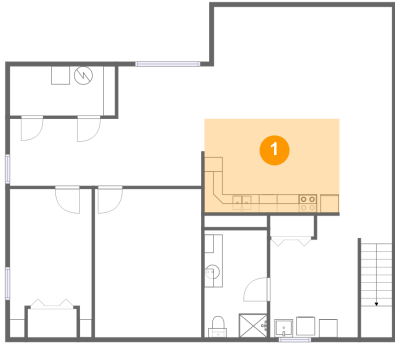
Total sqft: 57

Living area: 57

#		Dimensions	sqft	Counted as living area
12	Foyer	3'1" x 3'5"	41 sq. ft	Yes

1819 Rosebella Avenue, Hunt Club Upper - Blossom Park- Timbermill, Gloucester, Ontario, Canada, K1T

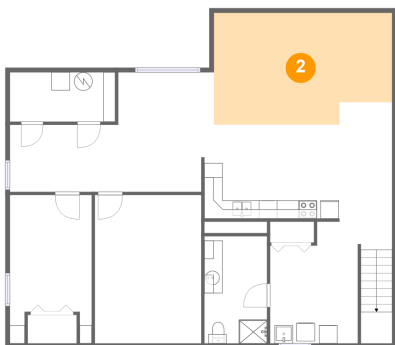
1 Floor 1 - Eat-in Kitchen



Dimensions: 14'9" x 10'3"
Area: 151 sq. ft
Counted as living area: Yes

Heated: Yes
Finished: Yes
Enclosed: Yes
Contiguous: Yes
Permitted: Yes
Wet space: No
Addition: No
Conversion: No

2 Floor 1 - Living Room

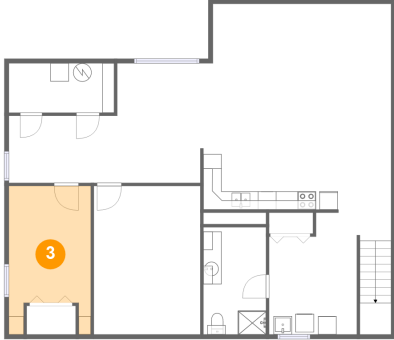


Dimensions: 19'5" x 12'3"
Area: 224 sq. ft
Counted as living area: Yes

Heated: Yes
Finished: Yes
Enclosed: Yes
Contiguous: Yes
Permitted: Yes
Wet space: No
Addition: No
Conversion: No

1819 Rosebella Avenue, Hunt Club Upper - Blossom Park- Timbermill, Gloucester, Ontario, Canada, K1T

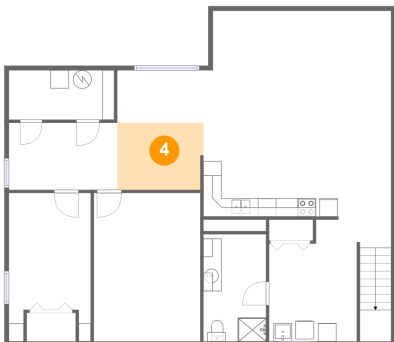
3 Floor 1 - Bedroom



Dimensions: 8'11" x 16'2"
Area: 124 sq. ft
Counted as living area: Yes

Heated: Yes
Finished: Yes
Enclosed: Yes
Contiguous: Yes
Permitted: Yes
Wet space: No
Addition: No
Conversion: No

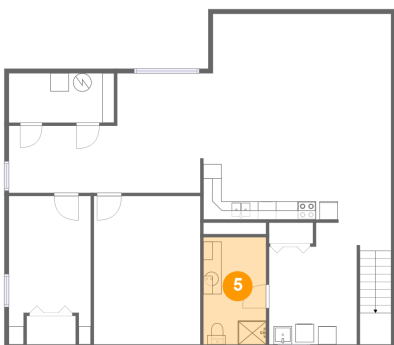
4 Floor 1 - Office



Dimensions: 9'5" x 7'4"
Area: 68 sq. ft
Counted as living area: Yes

Heated: Yes
Finished: Yes
Enclosed: Yes
Contiguous: Yes
Permitted: Yes
Wet space: No
Addition: No
Conversion: No

5 Floor 1 - Bath

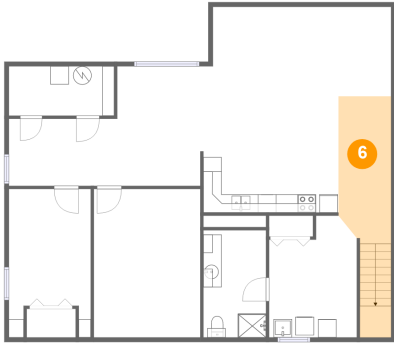


Dimensions: 6'10" x 11'8"
Area: 80 sq. ft
Counted as living area: Yes

Heated: Yes
Finished: Yes
Enclosed: Yes
Contiguous: Yes
Permitted: Yes
Wet space: Yes
Addition: No
Conversion: No

1819 Rosebella Avenue, Hunt Club Upper - Blossom Park- Timbermill, Gloucester, Ontario, Canada, K1T

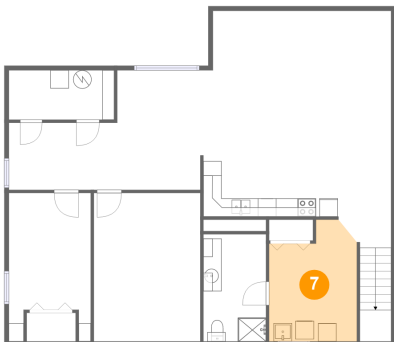
6 Floor 1 - Dining Area



Dimensions: 5'9" x 16'1"
Area: 124 sq. ft
Counted as living area: Yes

Heated: Yes
Finished: Yes
Enclosed: Yes
Contiguous: Yes
Permitted: Yes
Wet space: No
Addition: No
Conversion: No

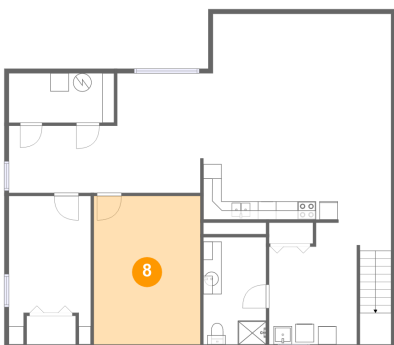
7 Floor 1 - Laundry



Dimensions: 9'7" x 13'4"
Area: 112 sq. ft
Counted as living area: Yes

Heated: Yes
Finished: Yes
Enclosed: Yes
Contiguous: Yes
Permitted: Yes
Wet space: No
Addition: No
Conversion: No

8 Floor 1 - Primary Bedroom

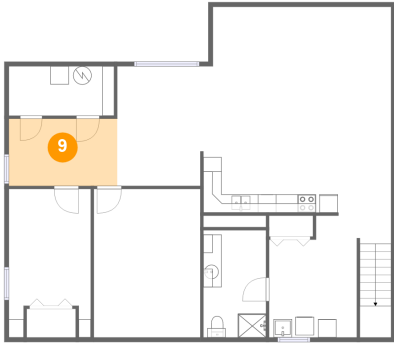


Dimensions: 11'8" x 16'2"
Area: 189 sq. ft
Counted as living area: Yes

Heated: Yes
Finished: Yes
Enclosed: Yes
Contiguous: Yes
Permitted: Yes
Wet space: No
Addition: No
Conversion: No

1819 Rosebella Avenue, Hunt Club Upper - Blossom Park- Timbermill, Gloucester, Ontario, Canada, K1T

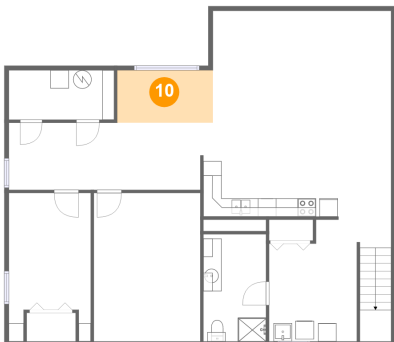
9 Floor 1 - Family Room



Dimensions: 11'10" x 7'4"
Area: 87 sq. ft
Counted as living area: Yes

Heated: Yes
Finished: Yes
Enclosed: Yes
Contiguous: Yes
Permitted: Yes
Wet space: No
Addition: No
Conversion: No

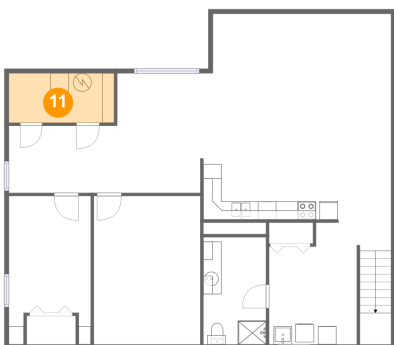
10 Floor 1 - Sitting Room



Dimensions: 10'5" x 5'8"
Area: 60 sq. ft
Counted as living area: Yes

Heated: Yes
Finished: Yes
Enclosed: Yes
Contiguous: Yes
Permitted: Yes
Wet space: No
Addition: No
Conversion: No

11 Floor 1 - Electrical Room

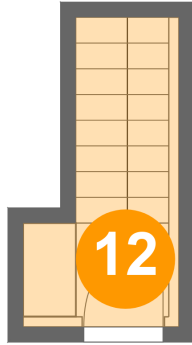


Dimensions: 11'6" x 5'5"
Area: 62 sq. ft
Counted as living area: No

Heated: No
Finished: No
Enclosed: Yes
Contiguous: Yes
Permitted: Yes
Wet space: No
Addition: No
Conversion: No

1819 Rosebella Avenue, Hunt Club Upper - Blossom Park- Timbermill, Gloucester, Ontario, Canada, K1T

12 Floor 2 - Foyer



Dimensions: 3'1" x 3'5"
Area: 41 sq. ft
Counted as living area: Yes

Heated: Yes
Finished: Yes
Enclosed: Yes
Contiguous: Yes
Permitted: Yes
Wet space: No
Addition: No
Conversion: No