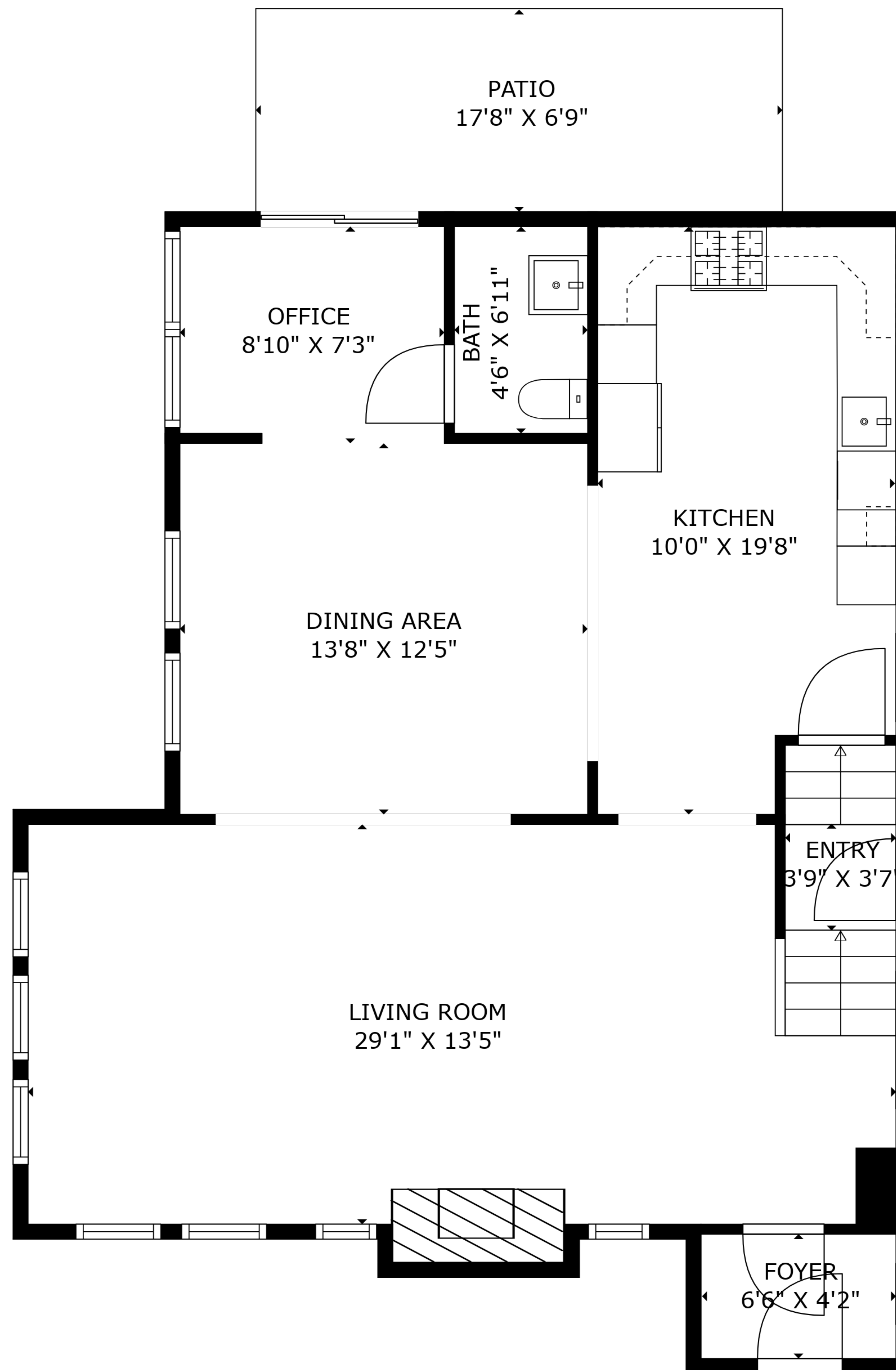


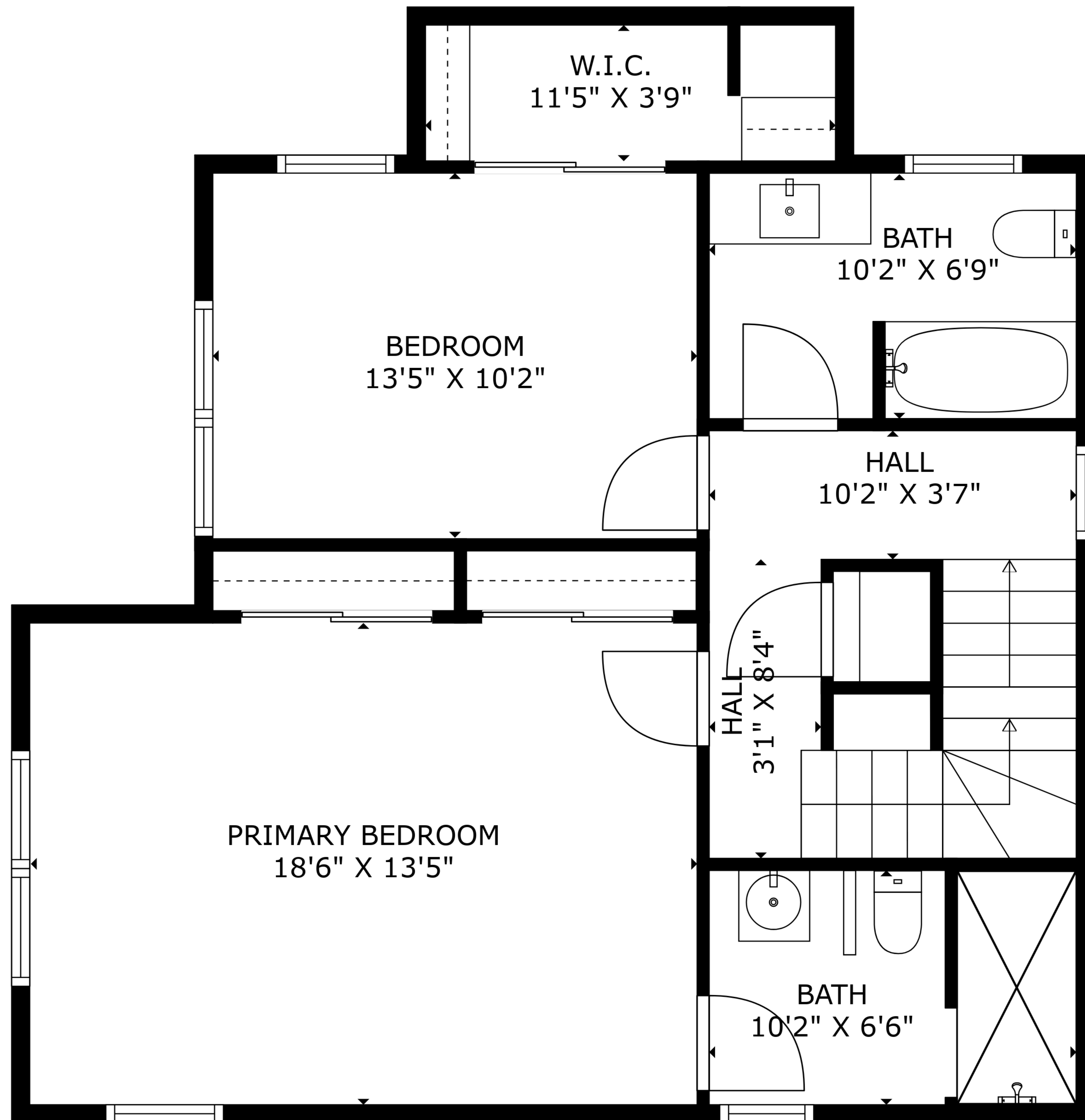
TOTAL: 2667 sq. ft

BELOW GROUND: 696 sq. ft, FLOOR 2: 902 sq. ft, FLOOR 3: 737 sq. ft, FLOOR 4: 332 sq. ft
 EXCLUDED AREAS: ELECTRICAL ROOM: 86 sq. ft, STORAGE: 35 sq. ft, PATIO: 120 sq. ft,
 FIREPLACE: 9 sq. ft

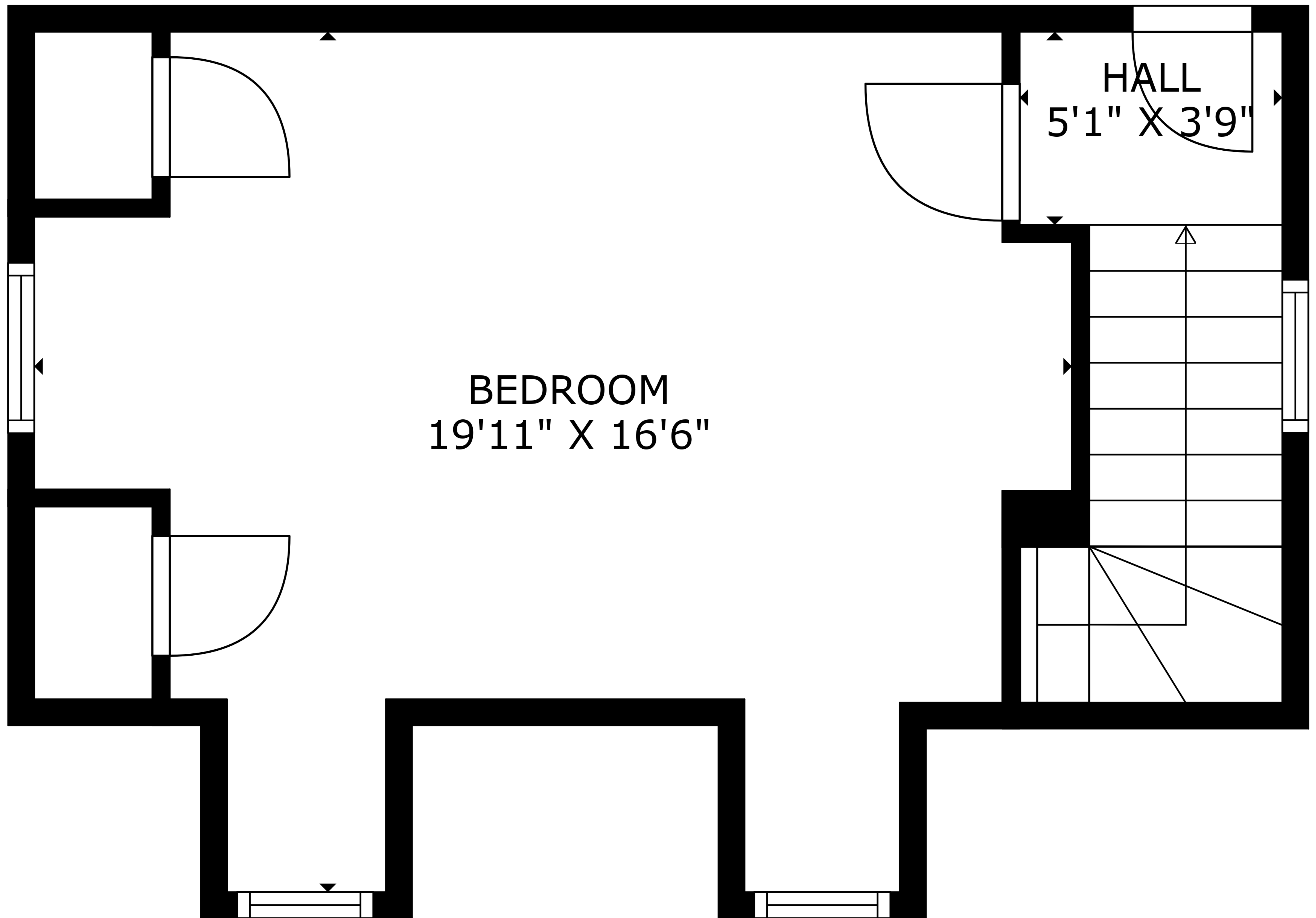


TOTAL: 2667 sq. ft

BELOW GROUND: 696 sq. ft, FLOOR 2: 902 sq. ft, FLOOR 3: 737 sq. ft, FLOOR 4: 332 sq. ft
 EXCLUDED AREAS: ELECTRICAL ROOM: 86 sq. ft, STORAGE: 35 sq. ft, PATIO: 120 sq. ft,
 FIREPLACE: 9 sq. ft



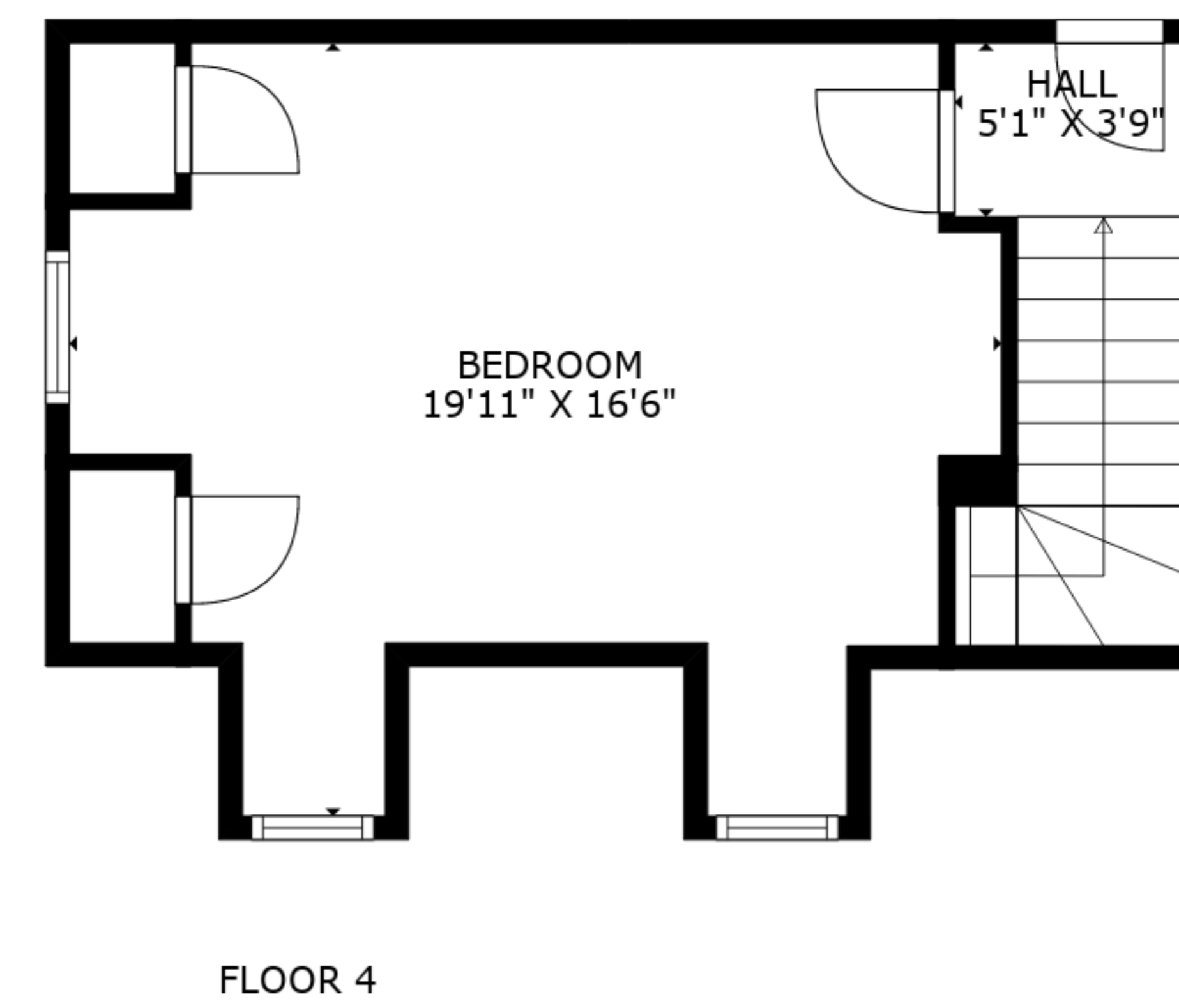
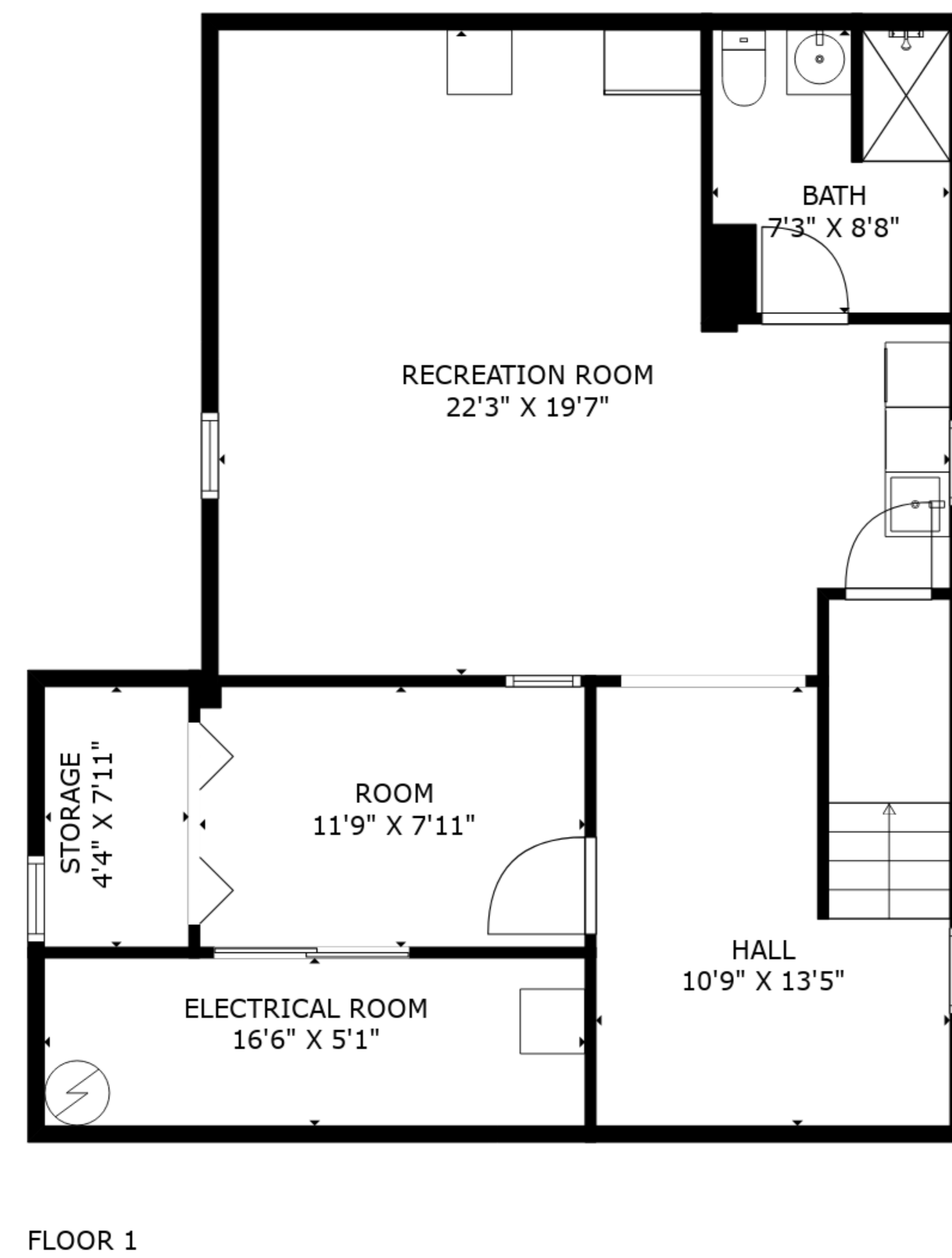
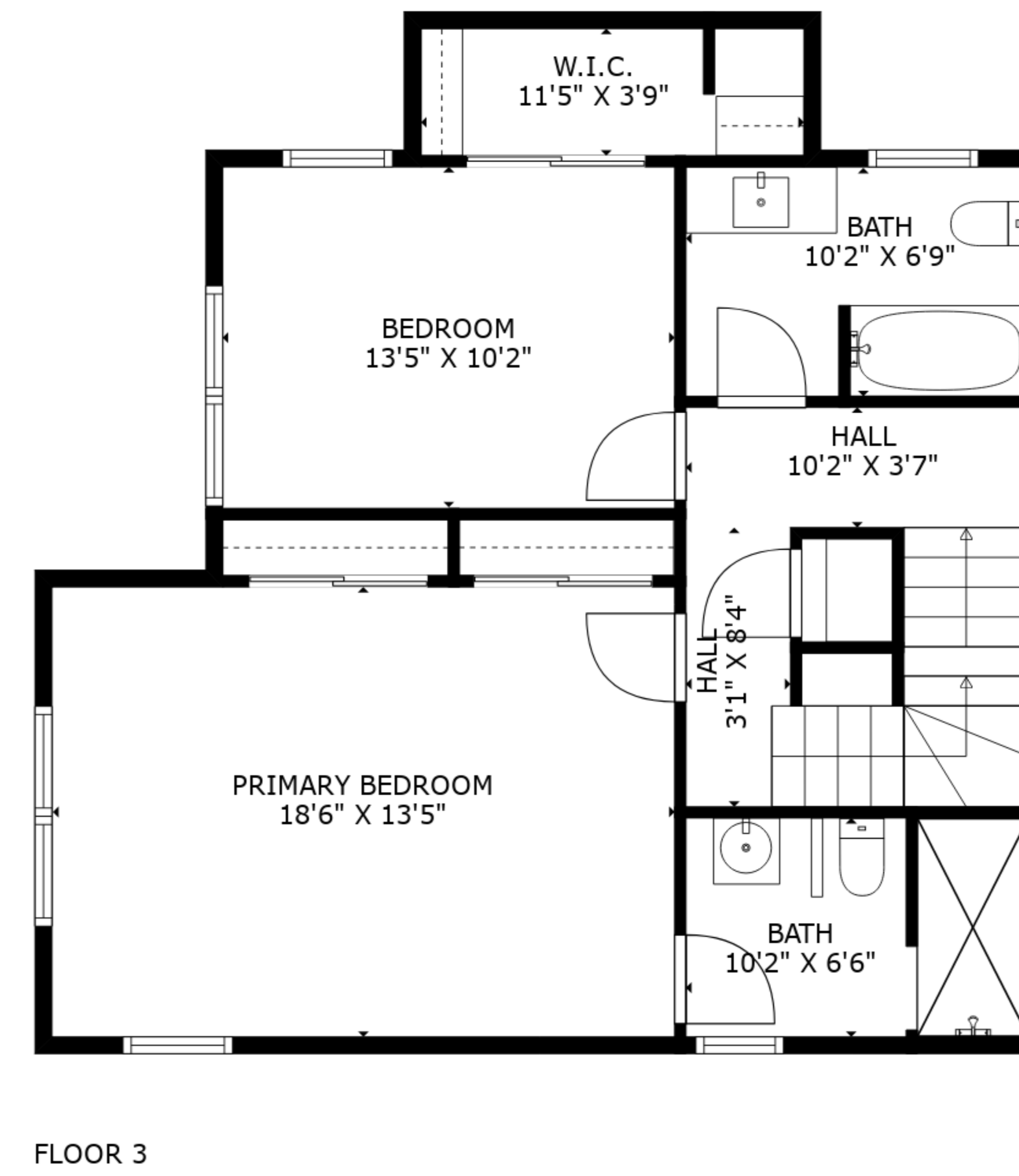
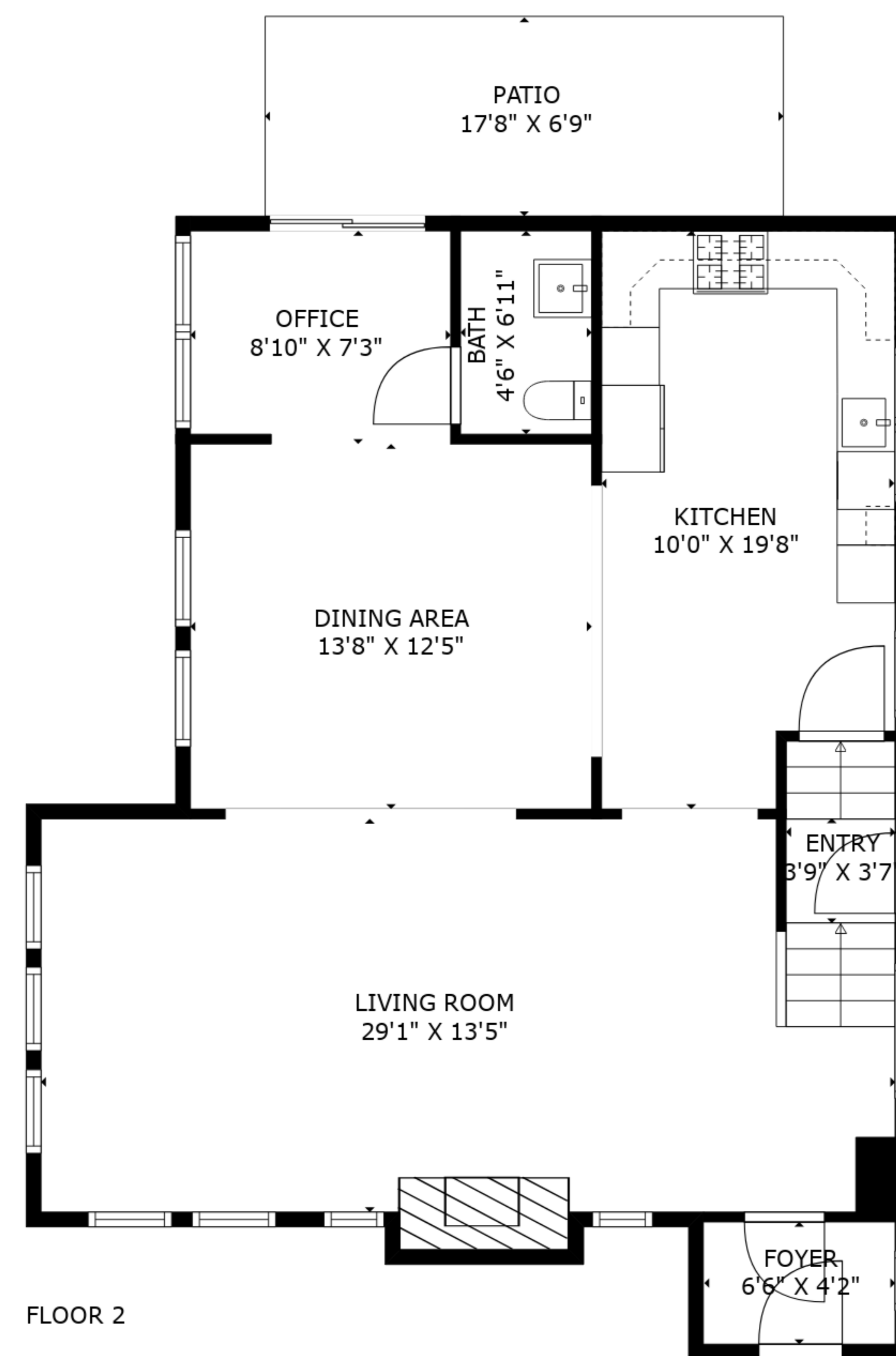
TOTAL: 2667 sq. ft
 BELOW GROUND: 696 sq. ft, FLOOR 2: 902 sq. ft, FLOOR 3: 737 sq. ft, FLOOR 4: 332 sq. ft
 EXCLUDED AREAS: ELECTRICAL ROOM: 86 sq. ft, STORAGE: 35 sq. ft, PATIO: 120 sq. ft,
 FIREPLACE: 9 sq. ft



BEDROOM
19'11" X 16'6"

HALL
5'1" X 3'9"

TOTAL: 2667 sq. ft
BELOW GROUND: 696 sq. ft, FLOOR 2: 902 sq. ft, FLOOR 3: 737 sq. ft, FLOOR 4: 332 sq. ft
EXCLUDED AREAS: ELECTRICAL ROOM: 86 sq. ft, STORAGE: 35 sq. ft, PATIO: 120 sq. ft,
FIREPLACE: 9 sq. ft



TOTAL: 2667 sq. ft
 BELOW GROUND: 696 sq. ft, FLOOR 2: 902 sq. ft, FLOOR 3: 737 sq. ft, FLOOR 4: 332 sq. ft
 EXCLUDED AREAS: ELECTRICAL ROOM: 86 sq. ft, STORAGE: 35 sq. ft, PATIO: 120 sq. ft,
 FIREPLACE: 9 sq. ft