



Home report


2192 Bear Creek Drive, Ontario, Wayne County, New York, United States, 14519




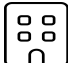
Property summary


 **1** Garages


 **3** Bedrooms

 **1** Bathrooms

 **1** Half baths

 **2** Floors

 **2,193** Gross living area sqft

 **2,688** Total sqft

Home report

2192 Bear Creek Drive, Ontario, Wayne County, New York, United States, 14519



Room dimensions

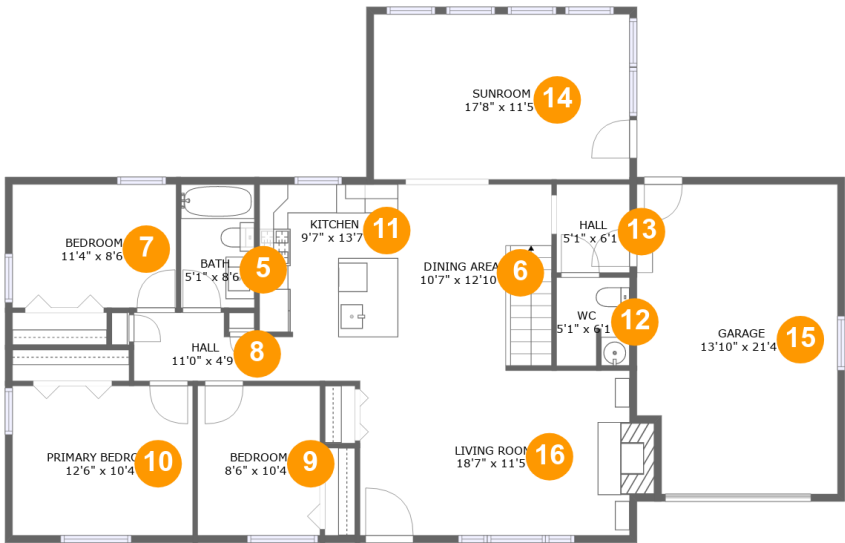
Floor 1

Total sqft: 1045 Living area: 872

| # | | Max Dimensions | sqft | Included |
|---|---------|-----------------|------------|----------|
| 1 | Hall | 2'10" x 2'8" | 8 sq. ft | Yes |
| 2 | Room | 20'1" x 22'11" | 413 sq. ft | Yes |
| 3 | Storage | 8'3" x 22'11" | 153 sq. ft | No |
| 4 | Utility | 16'10" x 22'11" | 386 sq. ft | Yes |

Home report

2192 Bear Creek Drive, Ontario, Wayne County, New York, United States, 14519



Room dimensions

Floor 2

Total sqft: 1643

Living area: 1321

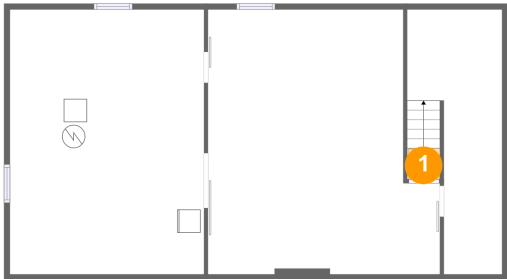
| # | | Max Dimensions | sqft | Included |
|----|-----------------|----------------|------------|----------|
| 5 | Bath | 5'1" x 8'6" | 43 sq. ft | Yes |
| 6 | Dining Area | 10'7" x 12'10" | 136 sq. ft | Yes |
| 7 | Bedroom | 11'4" x 8'6" | 96 sq. ft | Yes |
| 8 | Hall | 11'0" x 4'9" | 44 sq. ft | Yes |
| 9 | Bedroom | 8'6" x 10'4" | 87 sq. ft | Yes |
| 10 | Primary Bedroom | 12'6" x 10'4" | 129 sq. ft | Yes |
| 11 | Kitchen | 9'7" x 13'7" | 122 sq. ft | Yes |
| 12 | WC | 5'1" x 6'1" | 30 sq. ft | Yes |
| 13 | Hall | 5'1" x 6'1" | 31 sq. ft | Yes |
| 14 | Sunroom | 17'8" x 11'5" | 202 sq. ft | Yes |
| 15 | Garage | 13'10" x 21'4" | 287 sq. ft | No |

Home report

2192 Bear Creek Drive, Ontario, Wayne County, New York, United States, 14519

| # | | Max Dimensions | sqft | Included |
|----|-------------|----------------|------------|----------|
| 16 | Living Room | 18'7" x 11'5" | 219 sq. ft | Yes |

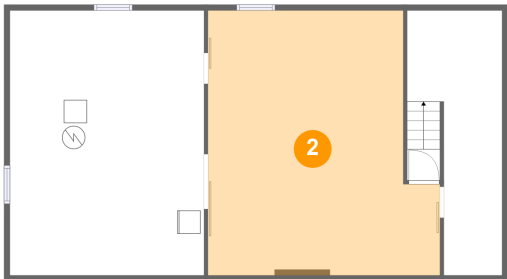
1 Floor 1 - Hall



Max Dimensions: 2'10" x 2'8"
Calculated Area: 8 sq. ft
Included: Yes

Heated: Yes
Finished: Yes
Enclosed: Yes
Contiguous: Yes
Permitted: Yes
Wet space: No
Addition: No
Conversion: No

2 Floor 1 - Room

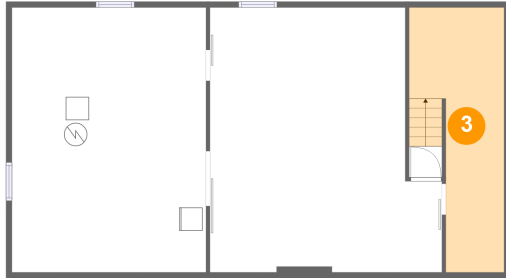


Max Dimensions: 20'1" x 22'11"
Calculated Area: 413 sq. ft
Included: Yes

Heated: Yes
Finished: Yes
Enclosed: Yes
Contiguous: Yes
Permitted: Yes
Wet space: No
Addition: No
Conversion: No

2192 Bear Creek Drive, Ontario, Wayne County, New York, United States, 14519

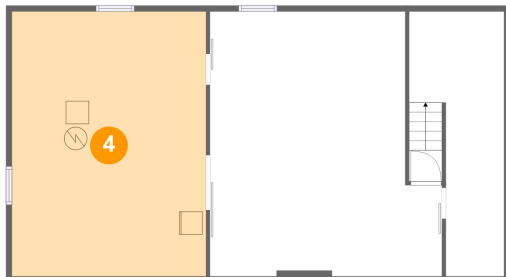
3 Floor 1 - Storage



Max Dimensions: 8'3" x 22'11"
Calculated Area: 153 sq. ft
Included: No

Heated: No
Finished: No
Enclosed: No
Contiguous: Yes
Permitted: Yes
Wet space: No
Addition: No
Conversion: No

4 Floor 1 - Utility



Max Dimensions: 16'10" x 22'11"
Calculated Area: 386 sq. ft
Included: Yes

Heated: Yes
Finished: Yes
Enclosed: Yes
Contiguous: Yes
Permitted: Yes
Wet space: No
Addition: No
Conversion: No

5 Floor 2 - Bath



Max Dimensions: 5'1" x 8'6"
Calculated Area: 43 sq. ft
Included: Yes

Heated: Yes
Finished: Yes
Enclosed: Yes
Contiguous: Yes
Permitted: Yes
Wet space: Yes
Addition: No
Conversion: No

6 Floor 2 - Dining Area



Max Dimensions: 10'7" x 12'10"
Calculated Area: 136 sq. ft
Included: Yes

Heated: Yes
Finished: Yes
Enclosed: Yes
Contiguous: Yes
Permitted: Yes
Wet space: No
Addition: No
Conversion: No

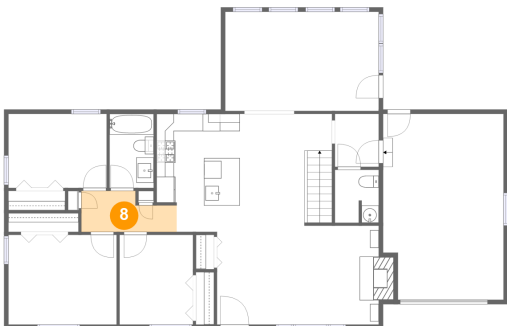
7 Floor 2 - Bedroom



Max Dimensions: 11'4" x 8'6"
Calculated Area: 96 sq. ft
Included: Yes

Heated: Yes
Finished: Yes
Enclosed: Yes
Contiguous: Yes
Permitted: Yes
Wet space: No
Addition: No
Conversion: No

8 Floor 2 - Hall



Max Dimensions: 11'0" x 4'9"
Calculated Area: 44 sq. ft
Included: Yes

Heated: Yes
Finished: Yes
Enclosed: Yes
Contiguous: Yes
Permitted: Yes
Wet space: No
Addition: No
Conversion: No

9 Floor 2 - Bedroom



Max Dimensions: 8'6" x 10'4"
Calculated Area: 87 sq. ft
Included: Yes

Heated: Yes
Finished: Yes
Enclosed: Yes
Contiguous: Yes
Permitted: Yes
Wet space: No
Addition: No
Conversion: No

10 Floor 2 - Primary Bedroom



Max Dimensions: 12'6" x 10'4"
Calculated Area: 129 sq. ft
Included: Yes

Heated: Yes
Finished: Yes
Enclosed: Yes
Contiguous: Yes
Permitted: Yes
Wet space: No
Addition: No
Conversion: No

11 Floor 2 - Kitchen



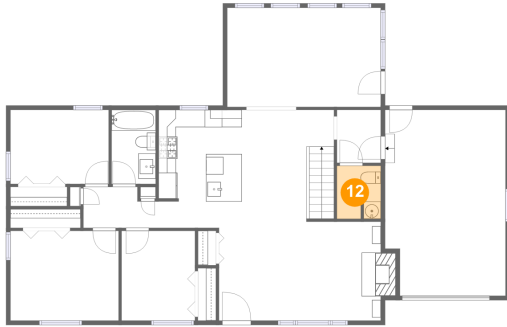
Max Dimensions: 9'7" x 13'7"
Calculated Area: 122 sq. ft
Included: Yes

Heated: Yes
Finished: Yes
Enclosed: Yes
Contiguous: Yes
Permitted: Yes
Wet space: No
Addition: No
Conversion: No

Home report

2192 Bear Creek Drive, Ontario, Wayne County, New York, United States, 14519

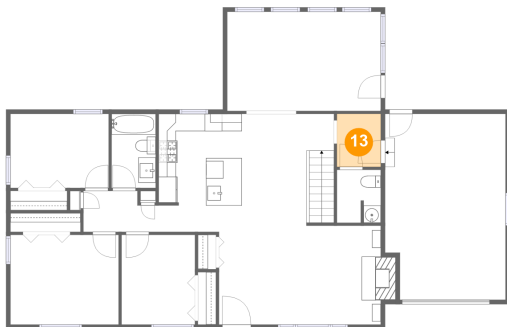
12 Floor 2 - WC



Max Dimensions: 5'1" x 6'1"
Calculated Area: 30 sq. ft
Included: Yes

Heated: Yes
Finished: Yes
Enclosed: Yes
Contiguous: Yes
Permitted: Yes
Wet space: Yes
Addition: No
Conversion: No

13 Floor 2 - Hall



Max Dimensions: 5'1" x 6'1"
Calculated Area: 31 sq. ft
Included: Yes

Heated: Yes
Finished: Yes
Enclosed: Yes
Contiguous: Yes
Permitted: Yes
Wet space: No
Addition: No
Conversion: No

14 Floor 2 - Sunroom



Max Dimensions: 17'8" x 11'5"
Calculated Area: 202 sq. ft
Included: Yes

Heated: Yes
Finished: Yes
Enclosed: Yes
Contiguous: Yes
Permitted: Yes
Wet space: No
Addition: No
Conversion: No

15 Floor 2 - Garage



Max Dimensions: 13'10" x 21'4"
Calculated Area: 287 sq. ft
Included: No

Heated: No
Finished: No
Enclosed: Yes
Contiguous: Yes
Permitted: Yes
Wet space: No
Addition: No
Conversion: No

16 Floor 2 - Living Room



Max Dimensions: 18'7" x 11'5"
Calculated Area: 219 sq. ft
Included: Yes

Heated: Yes
Finished: Yes
Enclosed: Yes
Contiguous: Yes
Permitted: Yes
Wet space: No
Addition: No
Conversion: No