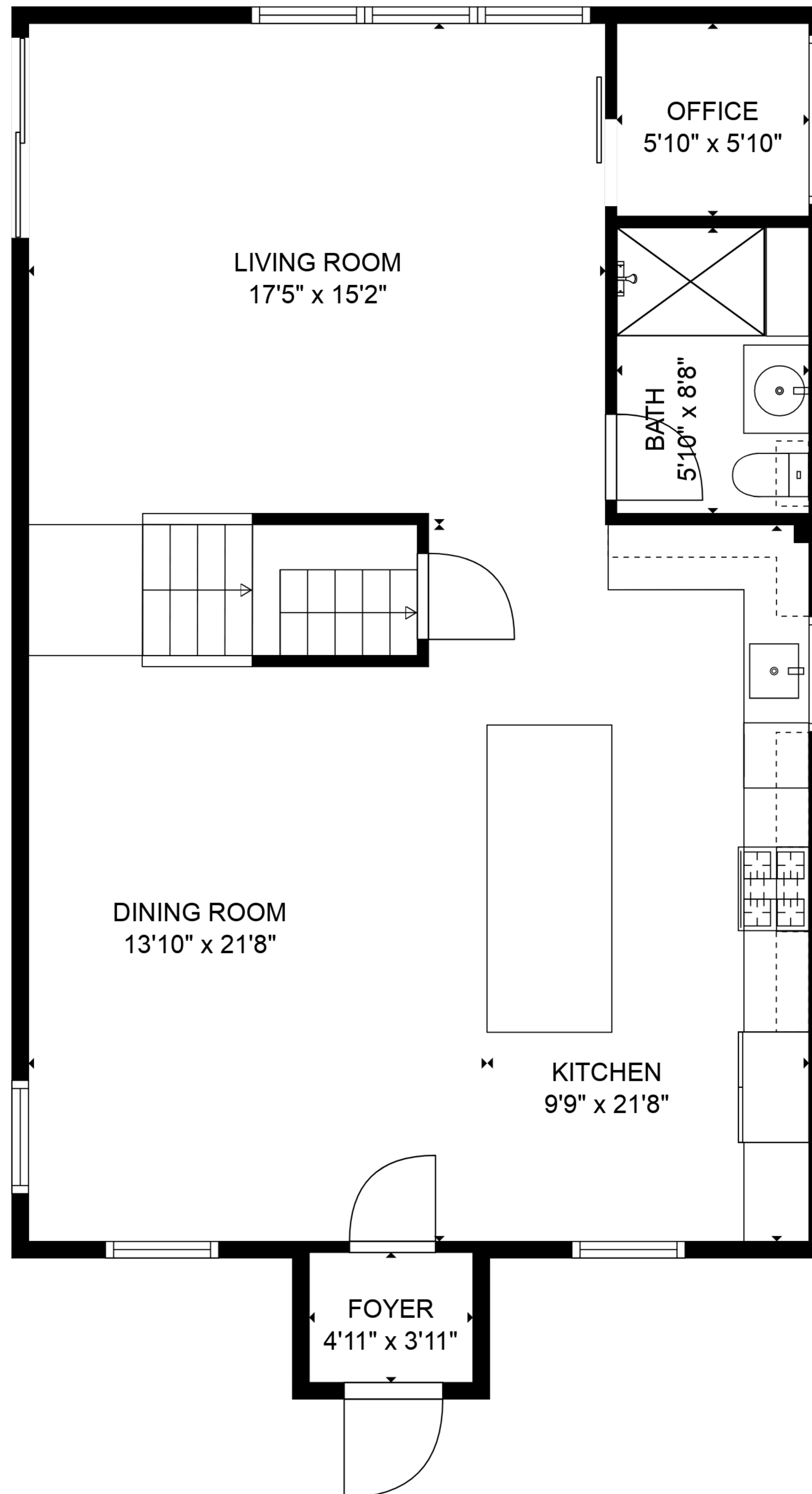


**BASEMENT**  
**20'6" x 18'9"**

**TOTAL: 1571 sq. ft**

BELOW GROUND: 0 sq. ft, FLOOR 2: 890 sq. ft, FLOOR 3: 512 sq. ft, FLOOR 4: 169 sq. ft  
EXCLUDED AREAS: BASEMENT: 384 sq. ft, LOW CEILING: 68 sq. ft

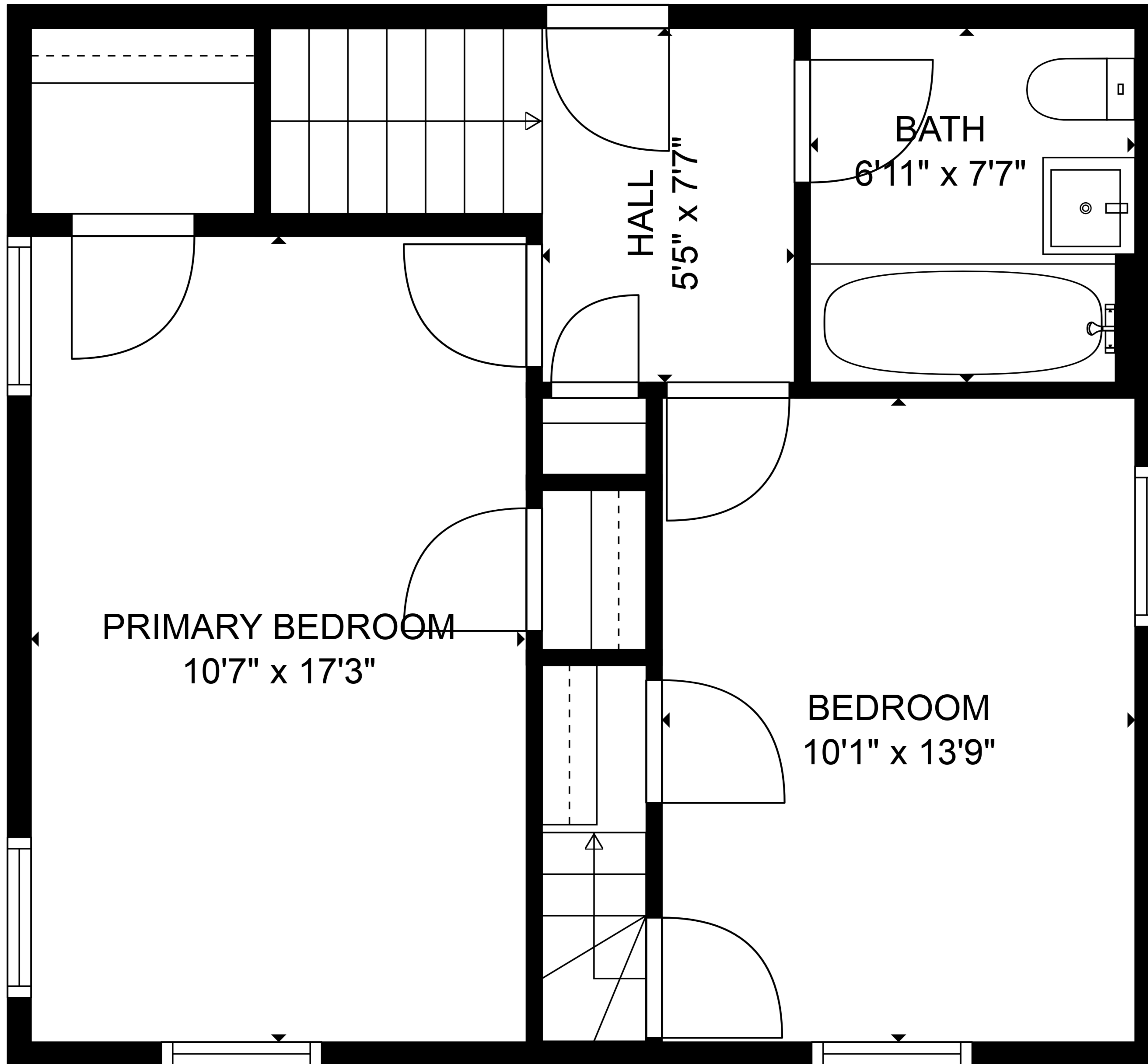


**TOTAL: 1571 sq. ft**

BELOW GROUND: 0 sq. ft, FLOOR 2: 890 sq. ft, FLOOR 3: 512 sq. ft, FLOOR 4: 169 sq. ft  
EXCLUDED AREAS: BASEMENT: 384 sq. ft, LOW CEILING: 68 sq. ft



Floor Plans are provided by HouseSnappers.com. Measurements are deemed highly reliable but not guaranteed.

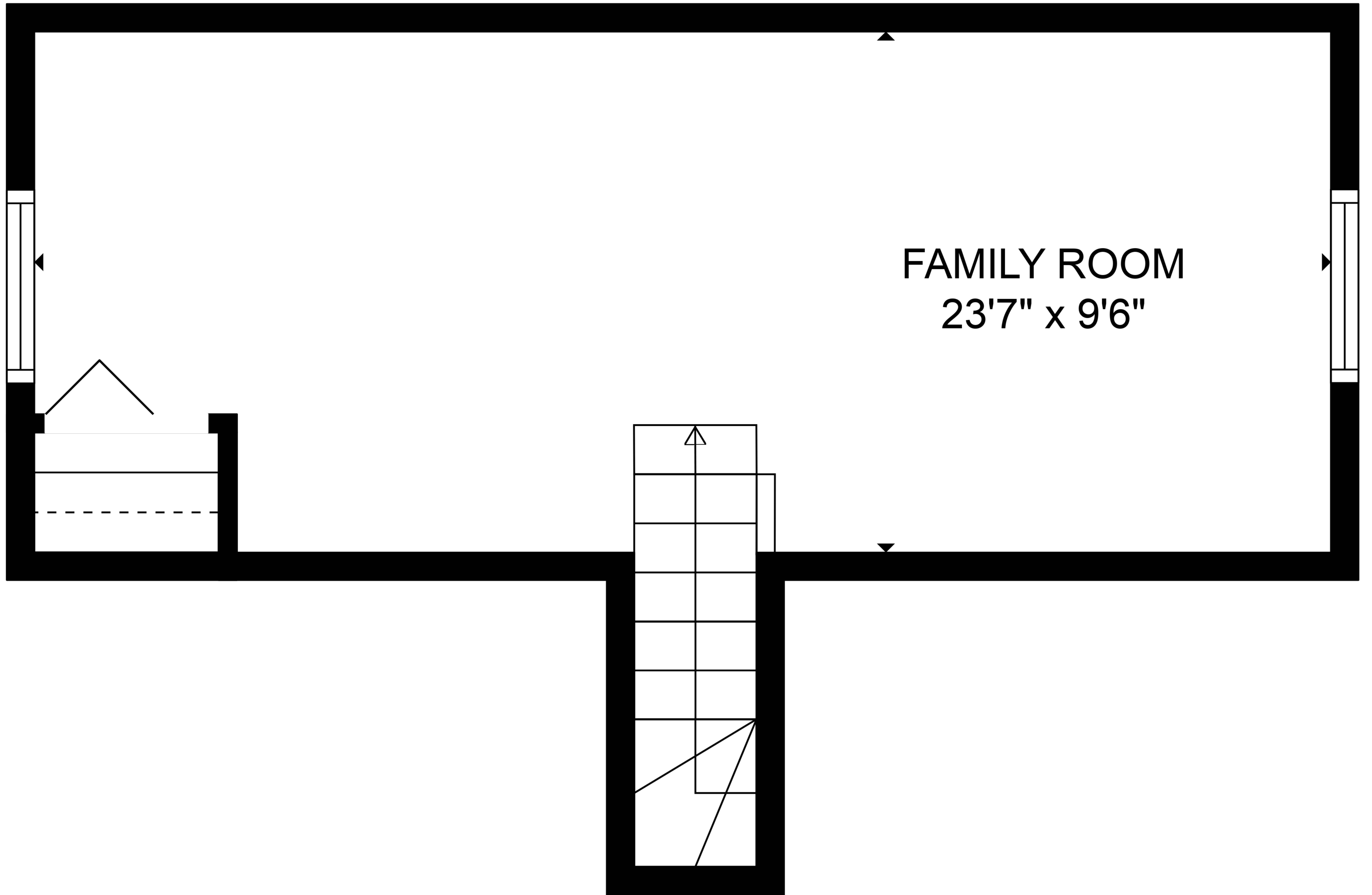


**TOTAL: 1571 sq. ft**

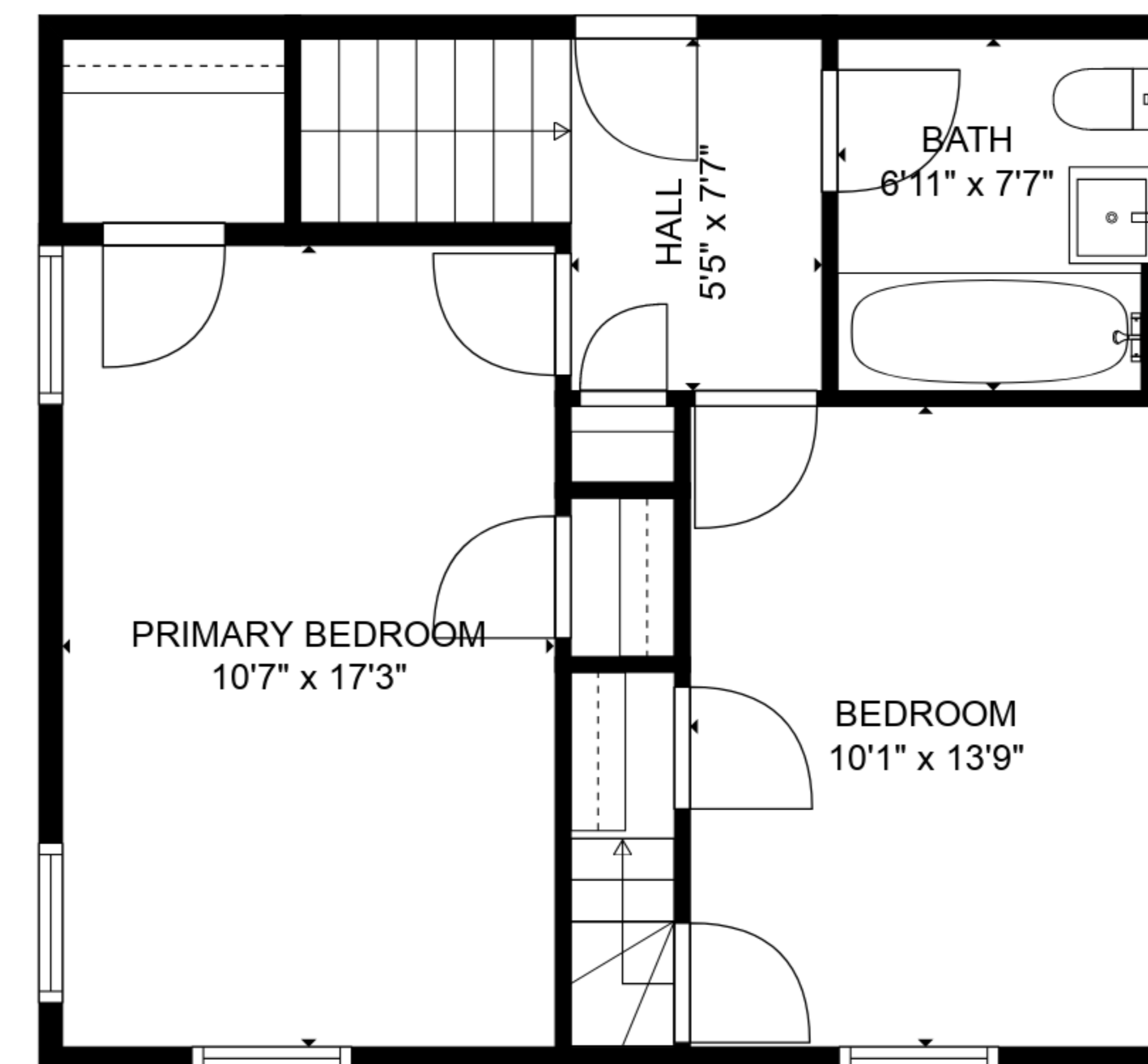
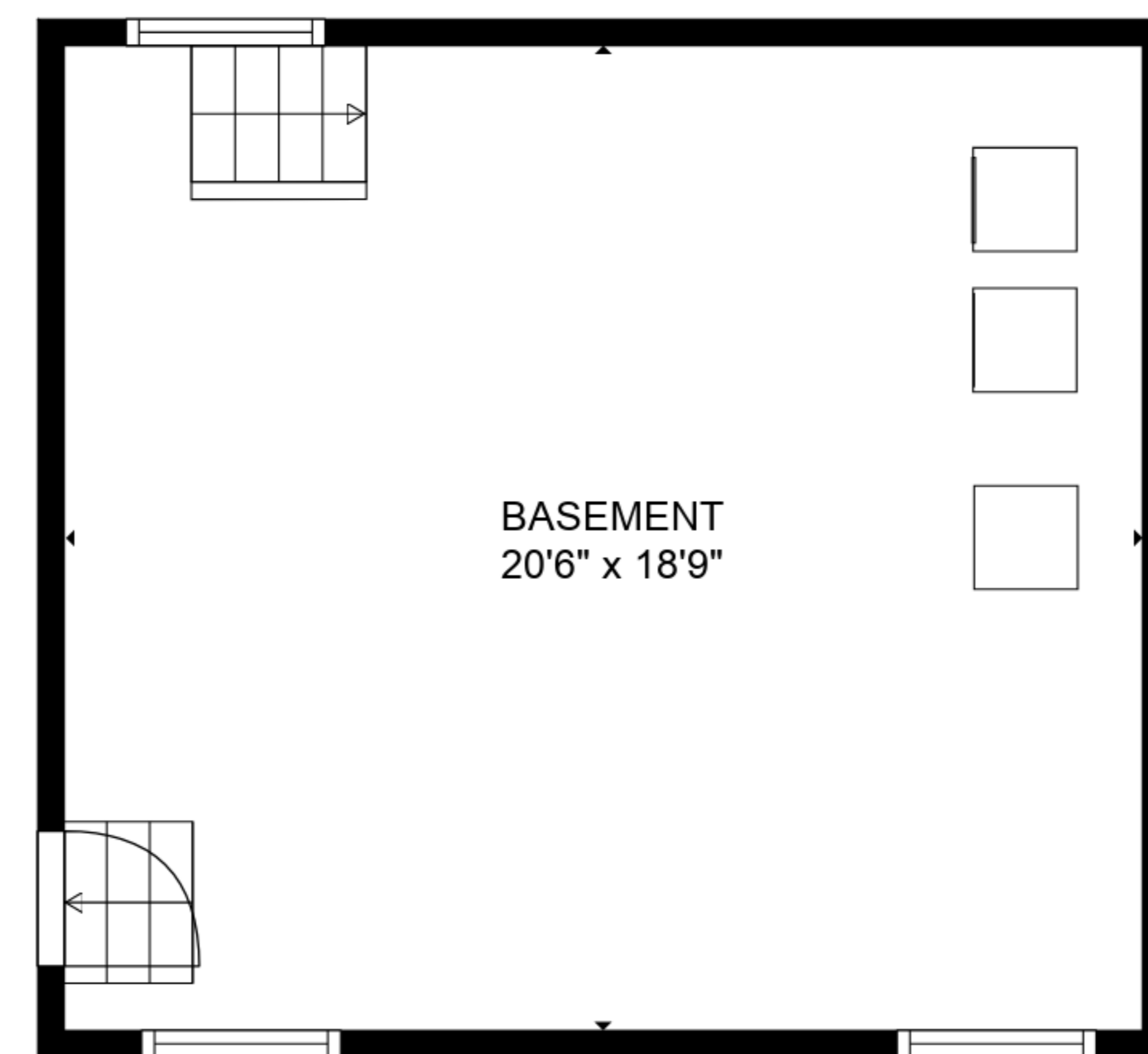
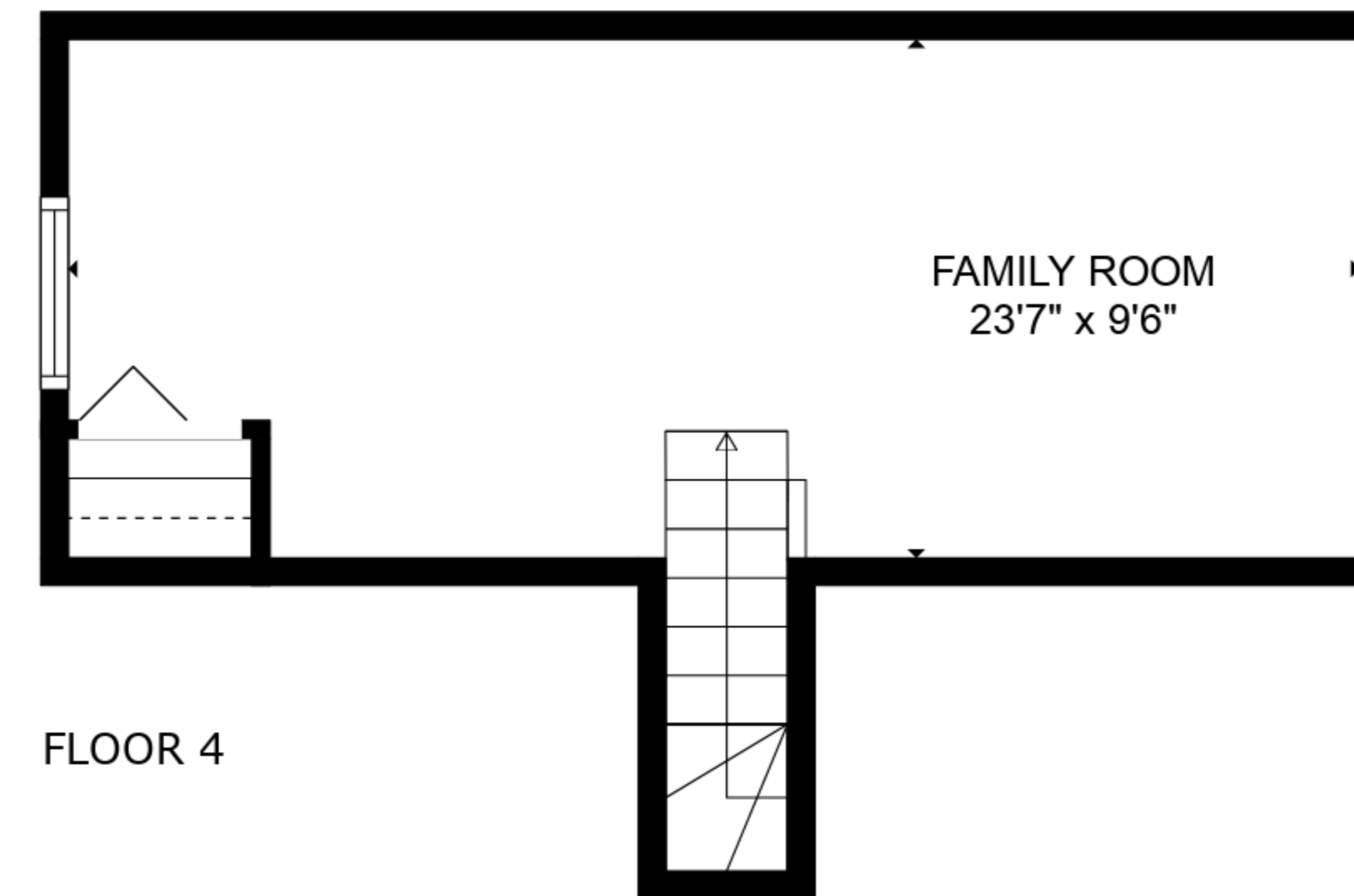
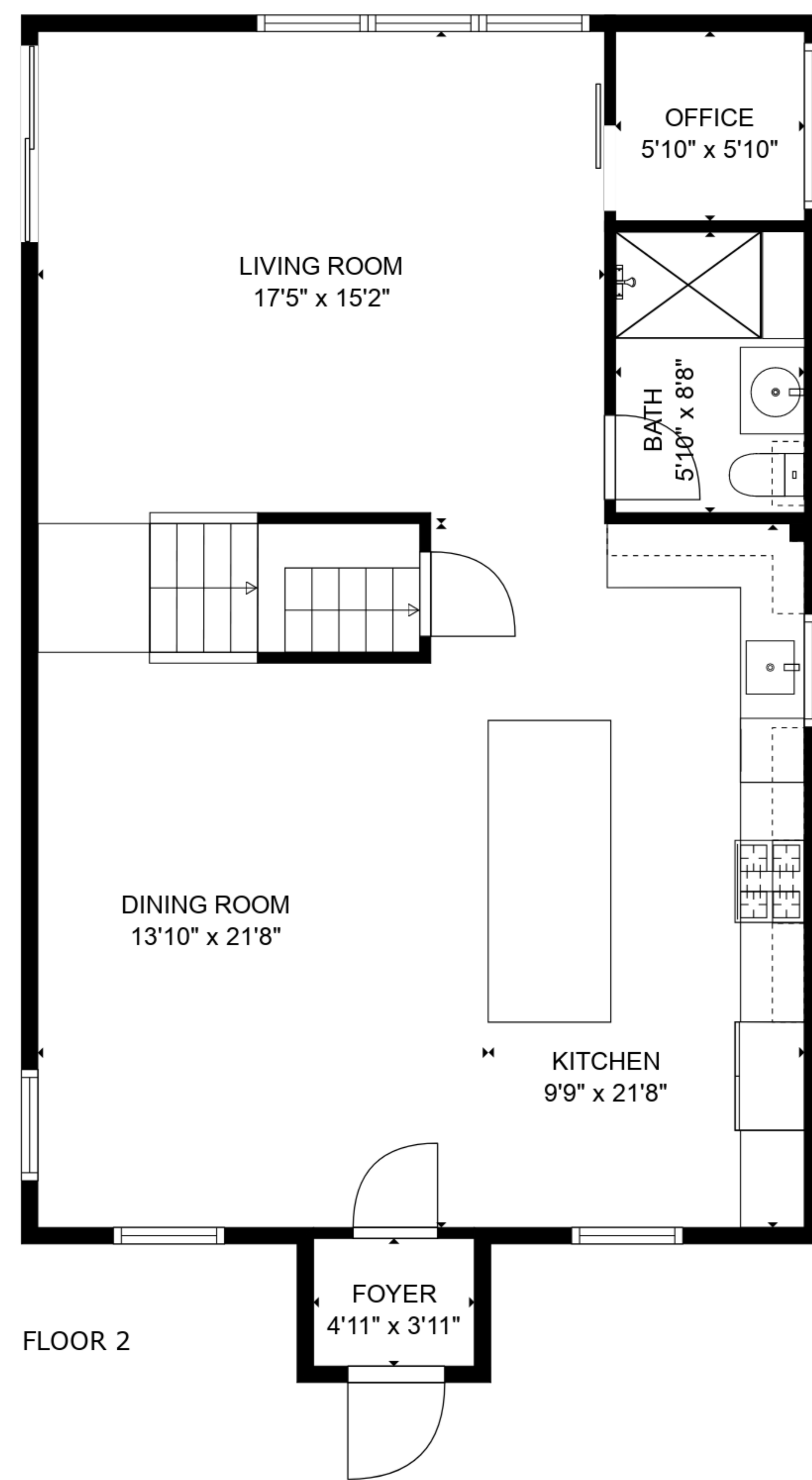
BELOW GROUND: 0 sq. ft, FLOOR 2: 890 sq. ft, FLOOR 3: 512 sq. ft, FLOOR 4: 169 sq. ft  
 EXCLUDED AREAS: BASEMENT: 384 sq. ft, LOW CEILING: 68 sq. ft



Floor Plans are provided by HouseSnappers.com. Measurements are deemed highly reliable but not guaranteed.



FAMILY ROOM  
23'7" x 9'6"



**TOTAL: 1571 sq. ft**

BELOW GROUND: 0 sq. ft, FLOOR 2: 890 sq. ft, FLOOR 3: 512 sq. ft, FLOOR 4: 169 sq. ft  
 EXCLUDED AREAS: BASEMENT: 384 sq. ft, LOW CEILING: 68 sq. ft



Floor Plans are provided by HouseSnappers.com. Measurements are deemed highly reliable but not guaranteed.