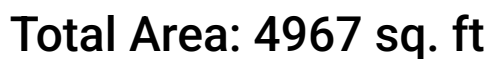


**3397 Blue Fish Drive, Hernando Beach, Hernando County,
Florida, United States, 34607**



Excluded: Garage 856 sq. ft, Outdoor Porch 431 sq. ft, Outdoor Porch Screen 770 sq. ft, Outdoor Balcony 516 sq. ft, Outdoor Balcony Screen 186 sq. ft, Storage 32 sq. ft, Opentobelow 401 sq. ft, Walls: 446 sq. ft

Property summary



Home report

**3397 Blue Fish Drive, Hernando Beach, Hernando County,
Florida, United States, 34607**



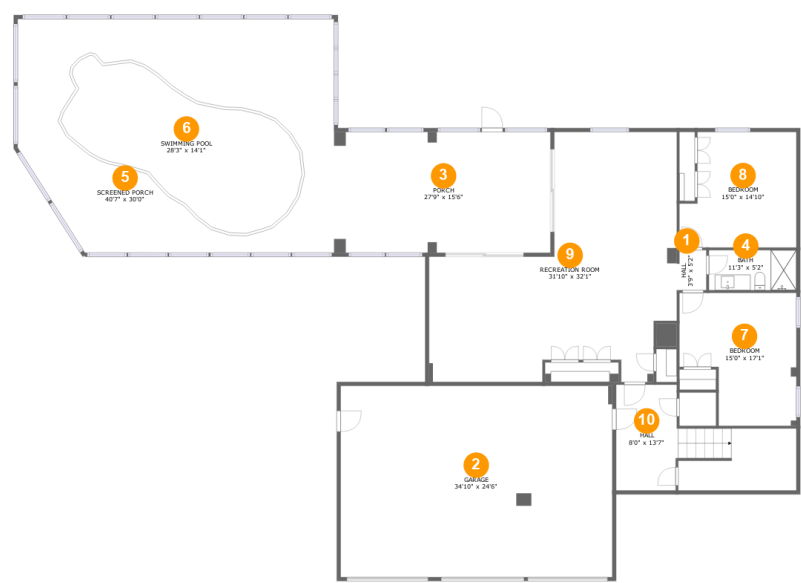
1
Half baths



1
Garages

Home report

3397 Blue Fish Drive, Hernando Beach, Hernando County,
Florida, United States, 34607



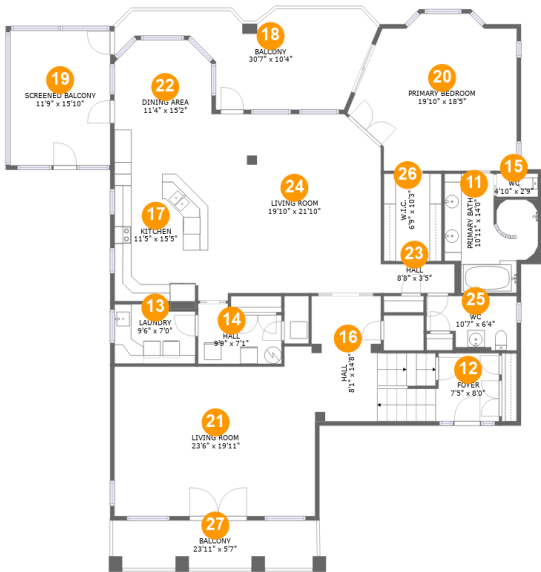
Room dimensions

Floor 1 Total:1578sqft Excluded: 2057sqft

#		Max Dimensions	sqft	Included
1	Hall	3'9" x 5'2"	19 sq. ft	Yes
2	Garage	34'10" x 24'6"	856 sq. ft	No
3	Porch	27'9" x 15'6"	431 sq. ft	No
4	Bath	11'3" x 5'2"	58 sq. ft	Yes
5	Screened Porch	40'7" x 30'0"	1161 sq. ft	No
6	Swimming Pool	28'3" x 14'1"	390 sq. ft	No
7	Bedroom	15'0" x 17'1"	218 sq. ft	Yes
8	Bedroom	15'0" x 14'10"	201 sq. ft	Yes
9	Recreation Room	31'10" x 32'1"	711 sq. ft	Yes
10	Hall	8'0" x 13'7"	132 sq. ft	Yes

Home report

3397 Blue Fish Drive, Hernando Beach, Hernando County,
Florida, United States, 34607



Room dimensions

Floor 2 Total:2267sqft Excluded: 556sqft

#		Max Dimensions	sqft	Included
11	Primary Bath	10'11" x 14'0"	120 sq. ft	Yes
12	Foyer	7'5" x 8'0"	58 sq. ft	Yes
13	Laundry	9'6" x 7'0"	63 sq. ft	Yes
14	Hall	9'9" x 7'1"	60 sq. ft	Yes
15	WC	4'10" x 2'9"	13 sq. ft	Yes
16	Hall	8'1" x 14'8"	169 sq. ft	Yes
17	Kitchen	11'5" x 15'5"	177 sq. ft	Yes
18	Balcony	30'7" x 10'4"	237 sq. ft	No
19	Screened Balcony	11'9" x 15'10"	186 sq. ft	No
20	Primary Bedroom	19'10" x 18'5"	303 sq. ft	Yes
21	Living Room	23'6" x 19'11"	417 sq. ft	Yes

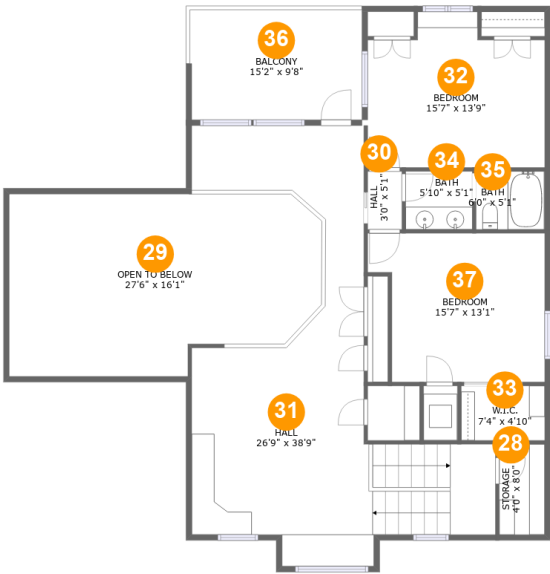
Home report

**3397 Blue Fish Drive, Hernando Beach, Hernando County,
Florida, United States, 34607**

#		Max Dimensions	sqft	Included
22	Dining Area	11'4" x 15'2"	166 sq. ft	Yes
23	Hall	8'8" x 3'5"	29 sq. ft	Yes
24	Living Room	19'10" x 21'10"	409 sq. ft	Yes
25	WC	10'7" x 6'4"	60 sq. ft	Yes
26	W.I.C.	6'9" x 10'3"	70 sq. ft	Yes
27	Balcony	23'11" x 5'7"	133 sq. ft	No

Home report

3397 Blue Fish Drive, Hernando Beach, Hernando County,
Florida, United States, 34607



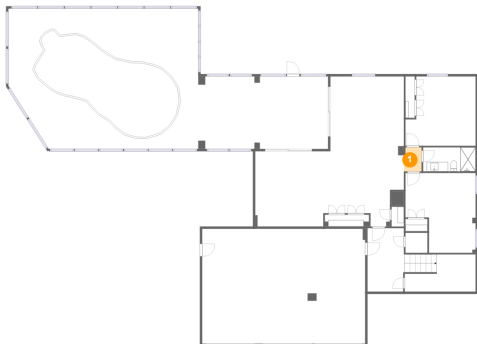
Room dimensions

Floor 3 Total:1122sqft Excluded: 579sqft

#		Max Dimensions	sqft	Included
28	Storage	4'0" x 8'0"	32 sq. ft	No
29	Open To Below	27'6" x 16'1"	401 sq. ft	No
30	Hall	3'0" x 5'1"	15 sq. ft	Yes
31	Hall	26'9" x 38'9"	516 sq. ft	Yes
32	Bedroom	15'7" x 13'9"	188 sq. ft	Yes
33	W.I.C.	7'4" x 4'10"	35 sq. ft	Yes
34	Bath	5'10" x 5'1"	30 sq. ft	Yes
35	Bath	6'0" x 5'1"	31 sq. ft	Yes
36	Balcony	15'2" x 9'8"	146 sq. ft	No
37	Bedroom	15'7" x 13'1"	183 sq. ft	Yes

3397 Blue Fish Drive, Hernando Beach, Hernando County,
Florida, United States, 34607

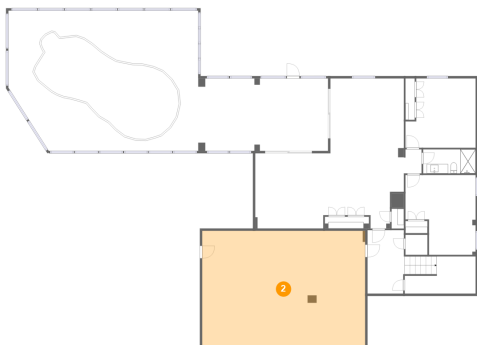
1 Floor 1 - Hall



Max Dimensions: 3'9" x 5'2"
Calculated Area: 19 sq. ft
Included: Yes

Heated: Yes
Finished: Yes
Enclosed: Yes
Contiguous: Yes
Permitted: Yes
Wet space: No
Addition: No
Conversion: No

2 Floor 1 - Garage

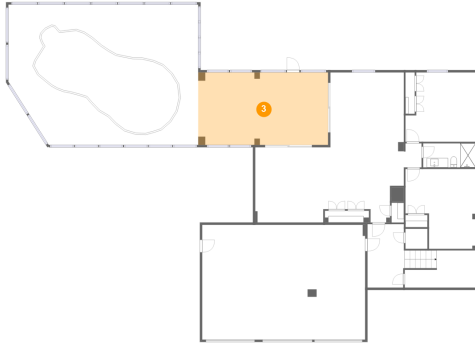


Max Dimensions: 34'10" x 24'6"
Calculated Area: 856 sq. ft
Included: No

Heated: No
Finished: No
Enclosed: Yes
Contiguous: Yes
Permitted: Yes
Wet space: No
Addition: No
Conversion: No

3397 Blue Fish Drive, Hernando Beach, Hernando County,
Florida, United States, 34607

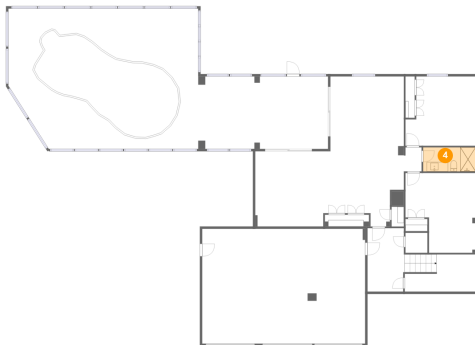
3 Floor 1 - Porch



Max Dimensions: 27'9" x 15'6"
Calculated Area: 431 sq. ft
Included: No

Heated: No
Finished: Yes
Enclosed: No
Contiguous: Yes
Permitted: Yes
Wet space: No
Addition: No
Conversion: No

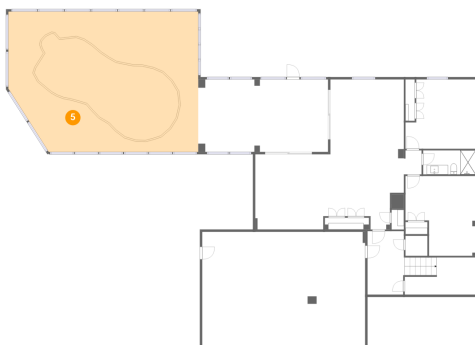
4 Floor 1 - Bath



Max Dimensions: 11'3" x 5'2"
Calculated Area: 58 sq. ft
Included: Yes

Heated: Yes
Finished: Yes
Enclosed: Yes
Contiguous: Yes
Permitted: Yes
Wet space: Yes
Addition: No
Conversion: No

5 Floor 1 - Screened Porch

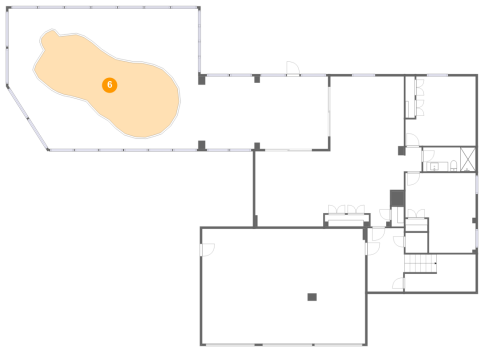


Max Dimensions: 40'7" x 30'0"
Calculated Area: 1161 sq. ft
Included: No

Heated: No
Finished: Yes
Enclosed: No
Contiguous: Yes
Permitted: Yes
Wet space: No
Addition: No
Conversion: No

3397 Blue Fish Drive, Hernando Beach, Hernando County,
Florida, United States, 34607

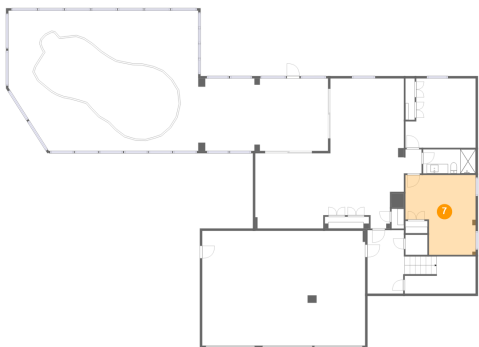
6 Floor 1 - Swimming Pool



Max Dimensions: 28'3" x 14'1"
Calculated Area: 390 sq. ft
Included: No

Heated: No
Finished: No
Enclosed: No
Contiguous: Yes
Permitted: No
Wet space: No
Addition: No
Conversion: No

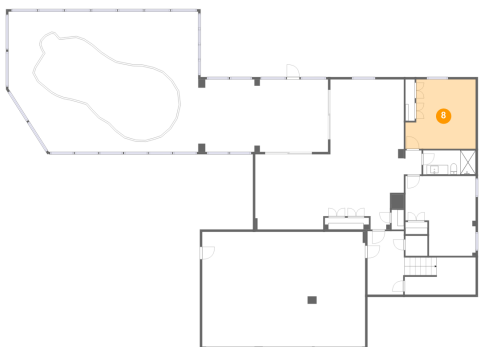
7 Floor 1 - Bedroom



Max Dimensions: 15'0" x 17'1"
Calculated Area: 218 sq. ft
Included: Yes

Heated: Yes
Finished: Yes
Enclosed: Yes
Contiguous: Yes
Permitted: Yes
Wet space: No
Addition: No
Conversion: No

8 Floor 1 - Bedroom

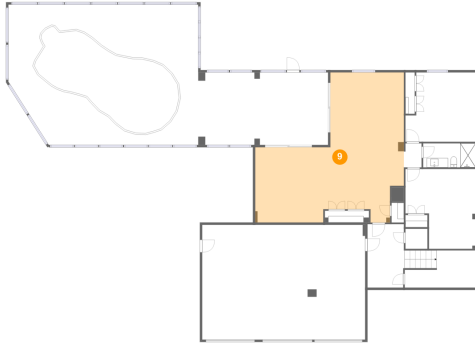


Max Dimensions: 15'0" x 14'10"
Calculated Area: 201 sq. ft
Included: Yes

Heated: Yes
Finished: Yes
Enclosed: Yes
Contiguous: Yes
Permitted: Yes
Wet space: No
Addition: No
Conversion: No

3397 Blue Fish Drive, Hernando Beach, Hernando County,
Florida, United States, 34607

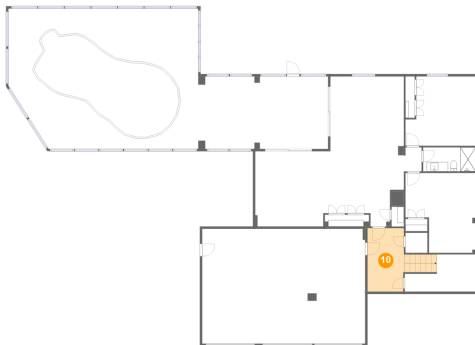
9 Floor 1 - Recreation Room



Max Dimensions: 31'10" x 32'1"
Calculated Area: 711 sq. ft
Included: Yes

Heated: Yes
Finished: Yes
Enclosed: Yes
Contiguous: Yes
Permitted: Yes
Wet space: No
Addition: No
Conversion: No

10 Floor 1 - Hall



Max Dimensions: 8'0" x 13'7"
Calculated Area: 132 sq. ft
Included: Yes

Heated: Yes
Finished: Yes
Enclosed: Yes
Contiguous: Yes
Permitted: Yes
Wet space: No
Addition: No
Conversion: No

11 Floor 2 - Primary Bath



Max Dimensions: 10'11" x 14'0"
Calculated Area: 120 sq. ft
Included: Yes

Heated: Yes
Finished: Yes
Enclosed: Yes
Contiguous: Yes
Permitted: Yes
Wet space: Yes
Addition: No
Conversion: No

3397 Blue Fish Drive, Hernando Beach, Hernando County,
Florida, United States, 34607

12 Floor 2 - Foyer



Max Dimensions: 7'5" x 8'0"
Calculated Area: 58 sq. ft
Included: Yes

Heated: Yes
Finished: Yes
Enclosed: Yes
Contiguous: Yes
Permitted: Yes
Wet space: No
Addition: No
Conversion: No

13 Floor 2 - Laundry



Max Dimensions: 9'6" x 7'0"
Calculated Area: 63 sq. ft
Included: Yes

Heated: Yes
Finished: Yes
Enclosed: Yes
Contiguous: Yes
Permitted: Yes
Wet space: No
Addition: No
Conversion: No

14 Floor 2 - Hall



Max Dimensions: 9'9" x 7'1"
Calculated Area: 60 sq. ft
Included: Yes

Heated: Yes
Finished: Yes
Enclosed: Yes
Contiguous: Yes
Permitted: Yes
Wet space: No
Addition: No
Conversion: No

3397 Blue Fish Drive, Hernando Beach, Hernando County,
Florida, United States, 34607

15 Floor 2 - WC



Max Dimensions: 4'10" x 2'9"
Calculated Area: 13 sq. ft
Included: Yes

Heated: Yes
Finished: Yes
Enclosed: Yes
Contiguous: Yes
Permitted: Yes
Wet space: No
Addition: No
Conversion: No

16 Floor 2 - Hall



Max Dimensions: 8'1" x 14'8"
Calculated Area: 169 sq. ft
Included: Yes

Heated: Yes
Finished: Yes
Enclosed: Yes
Contiguous: Yes
Permitted: Yes
Wet space: No
Addition: No
Conversion: No

17 Floor 2 - Kitchen



Max Dimensions: 11'5" x 15'5"
Calculated Area: 177 sq. ft
Included: Yes

Heated: Yes
Finished: Yes
Enclosed: Yes
Contiguous: Yes
Permitted: Yes
Wet space: No
Addition: No
Conversion: No

3397 Blue Fish Drive, Hernando Beach, Hernando County,
Florida, United States, 34607

18 Floor 2 - Balcony



Max Dimensions: 30'7" x 10'4"
Calculated Area: 237 sq. ft
Included: No

Heated: No
Finished: Yes
Enclosed: No
Contiguous: Yes
Permitted: Yes
Wet space: No
Addition: No
Conversion: No

19 Floor 2 - Screened Balcony



Max Dimensions: 11'9" x 15'10"
Calculated Area: 186 sq. ft
Included: No

Heated: No
Finished: Yes
Enclosed: No
Contiguous: Yes
Permitted: Yes
Wet space: No
Addition: No
Conversion: No

20 Floor 2 - Primary Bedroom



Max Dimensions: 19'10" x 18'5"
Calculated Area: 303 sq. ft
Included: Yes

Heated: Yes
Finished: Yes
Enclosed: Yes
Contiguous: Yes
Permitted: Yes
Wet space: No
Addition: No
Conversion: No

3397 Blue Fish Drive, Hernando Beach, Hernando County,
Florida, United States, 34607

21 Floor 2 - Living Room



Max Dimensions: 23'6" x 19'11"
Calculated Area: 417 sq. ft
Included: Yes

Heated: Yes
Finished: Yes
Enclosed: Yes
Contiguous: Yes
Permitted: Yes
Wet space: No
Addition: No
Conversion: No

22 Floor 2 - Dining Area



Max Dimensions: 11'4" x 15'2"
Calculated Area: 166 sq. ft
Included: Yes

Heated: Yes
Finished: Yes
Enclosed: Yes
Contiguous: Yes
Permitted: Yes
Wet space: No
Addition: No
Conversion: No

23 Floor 2 - Hall

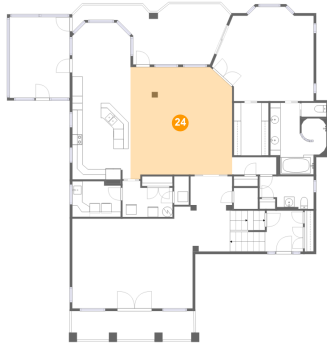


Max Dimensions: 8'8" x 3'5"
Calculated Area: 29 sq. ft
Included: Yes

Heated: Yes
Finished: Yes
Enclosed: Yes
Contiguous: Yes
Permitted: Yes
Wet space: No
Addition: No
Conversion: No

3397 Blue Fish Drive, Hernando Beach, Hernando County,
Florida, United States, 34607

24 Floor 2 - Living Room



Max Dimensions: 19'10" x 21'10"
Calculated Area: 409 sq. ft
Included: Yes

Heated: Yes
Finished: Yes
Enclosed: Yes
Contiguous: Yes
Permitted: Yes
Wet space: No
Addition: No
Conversion: No

25 Floor 2 - WC



Max Dimensions: 10'7" x 6'4"
Calculated Area: 60 sq. ft
Included: Yes

Heated: Yes
Finished: Yes
Enclosed: Yes
Contiguous: Yes
Permitted: Yes
Wet space: Yes
Addition: No
Conversion: No

26 Floor 2 - W.I.C.



Max Dimensions: 6'9" x 10'3"
Calculated Area: 70 sq. ft
Included: Yes

Heated: Yes
Finished: Yes
Enclosed: Yes
Contiguous: Yes
Permitted: Yes
Wet space: No
Addition: No
Conversion: No

3397 Blue Fish Drive, Hernando Beach, Hernando County,
Florida, United States, 34607

27 Floor 2 - Balcony



Max Dimensions: 23'11" x 5'7"
Calculated Area: 133 sq. ft
Included: No

Heated: No
Finished: Yes
Enclosed: No
Contiguous: Yes
Permitted: Yes
Wet space: No
Addition: No
Conversion: No

28 Floor 3 - Storage



Max Dimensions: 4'0" x 8'0"
Calculated Area: 32 sq. ft
Included: No

Heated: No
Finished: No
Enclosed: No
Contiguous: Yes
Permitted: Yes
Wet space: No
Addition: No
Conversion: No

29 Floor 3 - Open To Below



Max Dimensions: 27'6" x 16'1"
Calculated Area: 401 sq. ft
Included: No

Heated: No
Finished: No
Enclosed: No
Contiguous: Yes
Permitted: No
Wet space: No
Addition: No
Conversion: No

3397 Blue Fish Drive, Hernando Beach, Hernando County,
Florida, United States, 34607

30 Floor 3 - Hall



Max Dimensions: 3'0" x 5'1"
Calculated Area: 15 sq. ft
Included: Yes

Heated: Yes
Finished: Yes
Enclosed: Yes
Contiguous: Yes
Permitted: Yes
Wet space: No
Addition: No
Conversion: No

31 Floor 3 - Hall



Max Dimensions: 26'9" x 38'9"
Calculated Area: 516 sq. ft
Included: Yes

Heated: Yes
Finished: Yes
Enclosed: Yes
Contiguous: Yes
Permitted: Yes
Wet space: No
Addition: No
Conversion: No

32 Floor 3 - Bedroom



Max Dimensions: 15'7" x 13'9"
Calculated Area: 188 sq. ft
Included: Yes

Heated: Yes
Finished: Yes
Enclosed: Yes
Contiguous: Yes
Permitted: Yes
Wet space: No
Addition: No
Conversion: No

3397 Blue Fish Drive, Hernando Beach, Hernando County,
Florida, United States, 34607

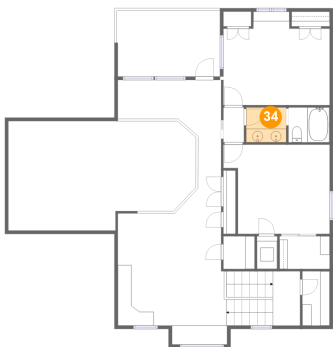
33 Floor 3 - W.I.C.



Max Dimensions: 7'4" x 4'10"
Calculated Area: 35 sq. ft
Included: Yes

Heated: Yes
Finished: Yes
Enclosed: Yes
Contiguous: Yes
Permitted: Yes
Wet space: No
Addition: No
Conversion: No

34 Floor 3 - Bath



Max Dimensions: 5'10" x 5'1"
Calculated Area: 30 sq. ft
Included: Yes

Heated: Yes
Finished: Yes
Enclosed: Yes
Contiguous: Yes
Permitted: Yes
Wet space: Yes
Addition: No
Conversion: No

35 Floor 3 - Bath



Max Dimensions: 6'0" x 5'1"
Calculated Area: 31 sq. ft
Included: Yes

Heated: Yes
Finished: Yes
Enclosed: Yes
Contiguous: Yes
Permitted: Yes
Wet space: Yes
Addition: No
Conversion: No

3397 Blue Fish Drive, Hernando Beach, Hernando County,
Florida, United States, 34607

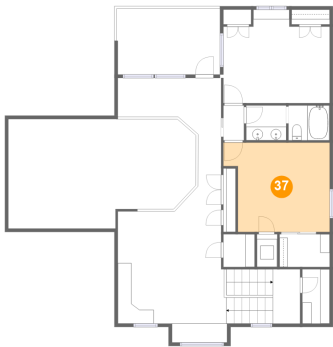
36 Floor 3 - Balcony



Max Dimensions: 15'2" x 9'8"
Calculated Area: 146 sq. ft
Included: No

Heated: No
Finished: Yes
Enclosed: No
Contiguous: Yes
Permitted: Yes
Wet space: No
Addition: No
Conversion: No

37 Floor 3 - Bedroom



Max Dimensions: 15'7" x 13'1"
Calculated Area: 183 sq. ft
Included: Yes

Heated: Yes
Finished: Yes
Enclosed: Yes
Contiguous: Yes
Permitted: Yes
Wet space: No
Addition: No
Conversion: No