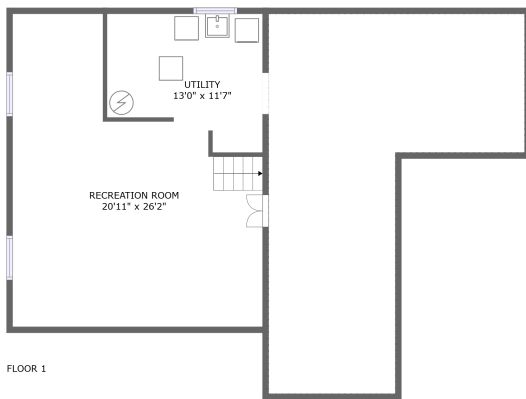
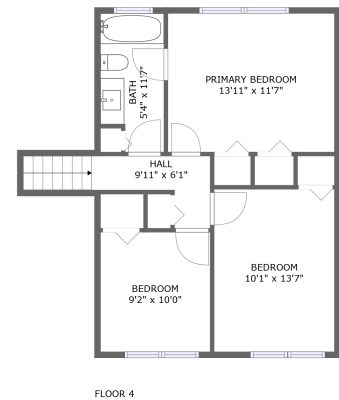
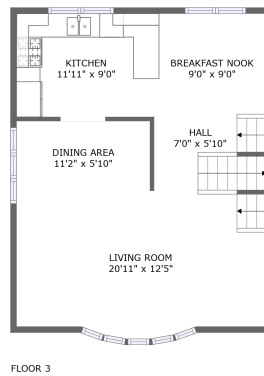
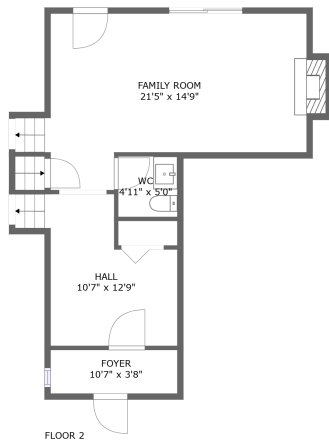



42 Centrepark Drive, Blackburn Hamlet, Gloucester, Ontario, Canada, K1B 3C1



Property summary

 **0** Garages

 **3** Bedrooms

 **1** Bathrooms

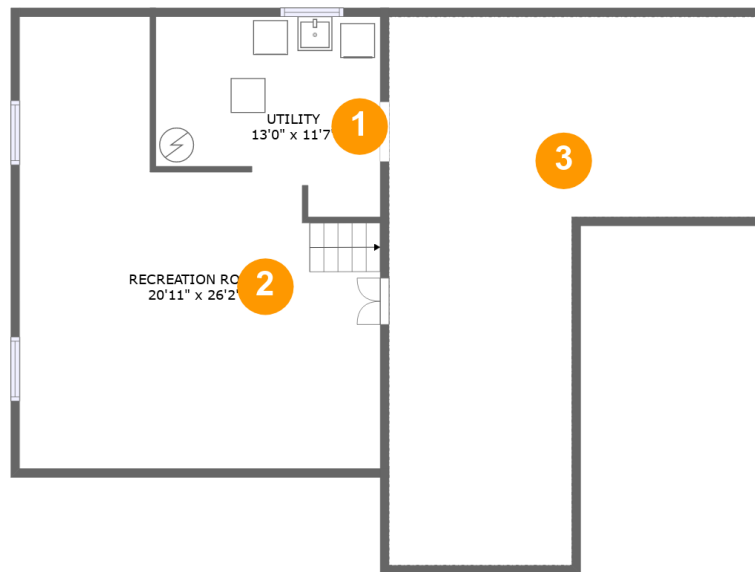
 **1** Half baths

 **4** Floors

 **1,781**
Gross living
area sqft

 **2,892**
Total sqft

42 Centrepark Drive, Blackburn Hamlet, Gloucester, Ontario, Canada, K1B 3C1



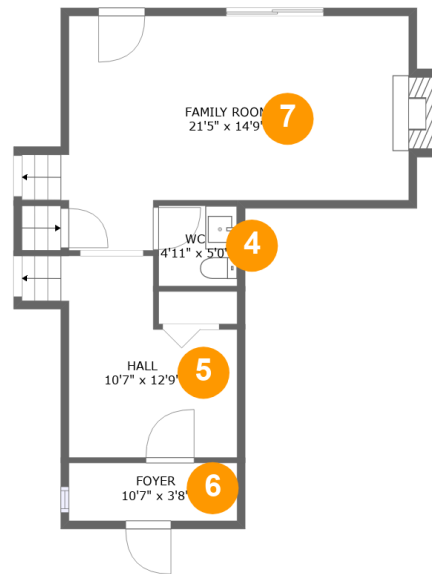
Room dimensions

Floor 1

Total sqft: 1102 Living area: 0

#		Dimensions	sqft	Counted as living area
1	Utility	13'0" x 11'7"	128 sq. ft	No
2	Recreation Room	20'11" x 26'2"	414 sq. ft	No
3	Crawl Space	21'5" x 31'9"	464 sq. ft	No

42 Centrepark Drive, Blackburn Hamlet, Gloucester, Ontario, Canada, K1B 3C1



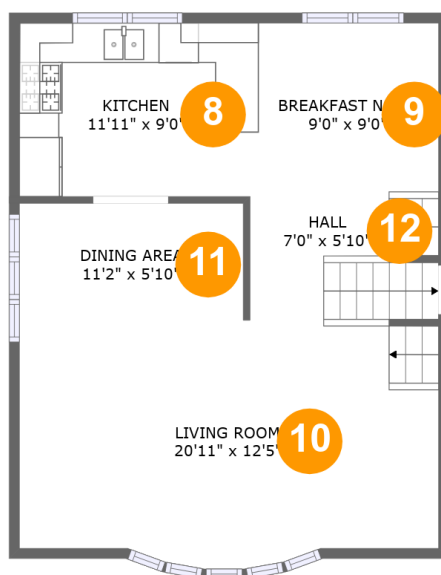
Room dimensions

Floor 2

Total sqft: 557 Living area: 548

#		Dimensions	sqft	Counted as living area
4	WC	4'11" x 5'0"	25 sq. ft	Yes
5	Hall	10'7" x 12'9"	119 sq. ft	Yes
6	Foyer	10'7" x 3'8"	39 sq. ft	Yes
7	Family Room	21'5" x 14'9"	282 sq. ft	Yes

**42 Centrepark Drive, Blackburn Hamlet, Gloucester,
Ontario, Canada, K1B 3C1**



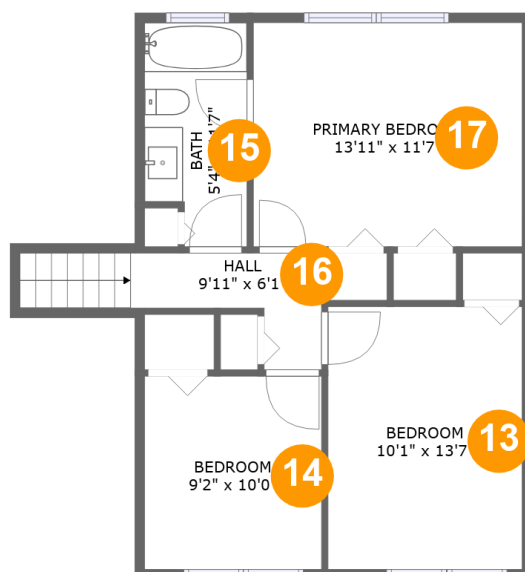
Room dimensions

Floor 3

Total sqft: 604 Living area: 604

#		Dimensions	sqft	Counted as living area
8	Kitchen	11'11" x 9'0"	103 sq. ft	Yes
9	Breakfast Nook	9'0" x 9'0"	81 sq. ft	Yes
10	Living Room	20'11" x 12'5"	244 sq. ft	Yes
11	Dining Area	11'2" x 5'10"	65 sq. ft	Yes
12	Hall	7'0" x 5'10"	54 sq. ft	Yes

42 Centrepark Drive, Blackburn Hamlet, Gloucester,
Ontario, Canada, K1B 3C1



Room dimensions

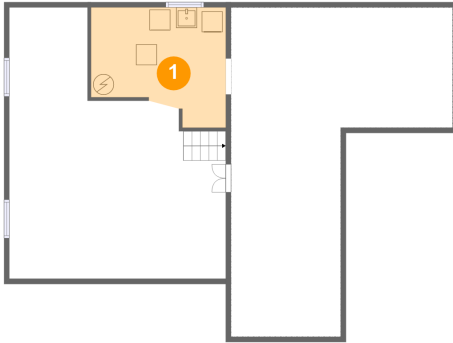
Floor 4

Total sqft: 629 Living area: 629

#		Dimensions	sqft	Counted as living area
13	Bedroom	10'1" x 13'7"	137 sq. ft	Yes
14	Bedroom	9'2" x 10'0"	92 sq. ft	Yes
15	Bath	5'4" x 11'7"	57 sq. ft	Yes
16	Hall	9'11" x 6'1"	54 sq. ft	Yes
17	Primary Bedroom	13'11" x 11'7"	162 sq. ft	Yes

42 Centrepark Drive, Blackburn Hamlet, Gloucester, Ontario, Canada, K1B 3C1

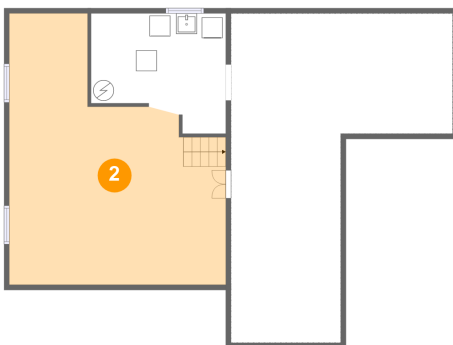
1 Floor 1 - Utility



Dimensions: 13'0" x 11'7"
Area: 128 sq. ft
Counted as living area: No

Heated: Yes
Finished: No
Enclosed: Yes
Contiguous: Yes
Permitted: Yes
Wet space: No
Addition: No
Conversion: No

2 Floor 1 - Recreation Room

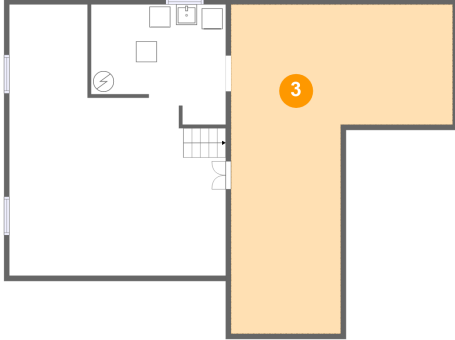


Dimensions: 20'11" x 26'2"
Area: 414 sq. ft
Counted as living area: No

Heated: Yes
Finished: Yes
Enclosed: Yes
Contiguous: No
Permitted: Yes
Wet space: No
Addition: No
Conversion: No

42 Centrepark Drive, Blackburn Hamlet, Gloucester,
Ontario, Canada, K1B 3C1

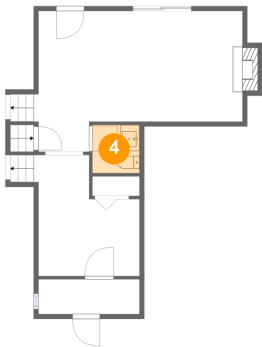
3 Floor 1 - Crawl Space



Dimensions: 21'5" x 31'9"
Area: 464 sq. ft
Counted as living area: No

Heated: No
Finished: No
Enclosed: No
Contiguous: Yes
Permitted: No
Wet space: No
Addition: No
Conversion: No

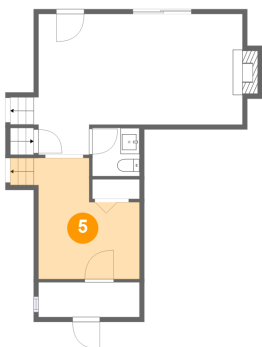
4 Floor 2 - WC



Dimensions: 4'11" x 5'0"
Area: 25 sq. ft
Counted as living area: Yes

Heated: Yes
Finished: Yes
Enclosed: Yes
Contiguous: Yes
Permitted: Yes
Wet space: Yes
Addition: No
Conversion: No

5 Floor 2 - Hall

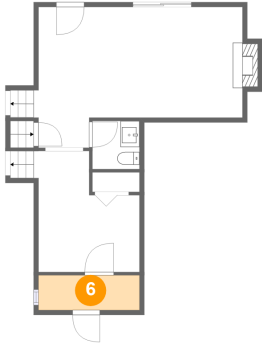


Dimensions: 10'7" x 12'9"
Area: 119 sq. ft
Counted as living area: Yes

Heated: Yes
Finished: Yes
Enclosed: Yes
Contiguous: Yes
Permitted: Yes
Wet space: No
Addition: No
Conversion: No

42 Centrepark Drive, Blackburn Hamlet, Gloucester,
Ontario, Canada, K1B 3C1

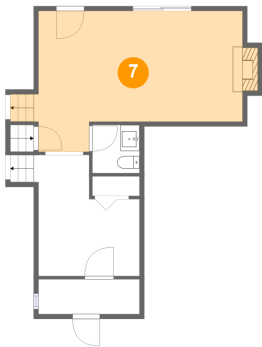
6 Floor 2 - Foyer



Dimensions: 10'7" x 3'8"
Area: 39 sq. ft
Counted as living area: Yes

Heated: Yes
Finished: Yes
Enclosed: Yes
Contiguous: Yes
Permitted: Yes
Wet space: No
Addition: No
Conversion: No

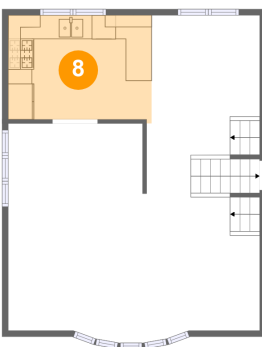
7 Floor 2 - Family Room



Dimensions: 21'5" x 14'9"
Area: 282 sq. ft
Counted as living area: Yes

Heated: Yes
Finished: Yes
Enclosed: Yes
Contiguous: Yes
Permitted: Yes
Wet space: No
Addition: No
Conversion: No

8 Floor 3 - Kitchen



Dimensions: 11'11" x 9'0"
Area: 103 sq. ft
Counted as living area: Yes

Heated: Yes
Finished: Yes
Enclosed: Yes
Contiguous: Yes
Permitted: Yes
Wet space: No
Addition: No
Conversion: No

42 Centrepark Drive, Blackburn Hamlet, Gloucester,
Ontario, Canada, K1B 3C1

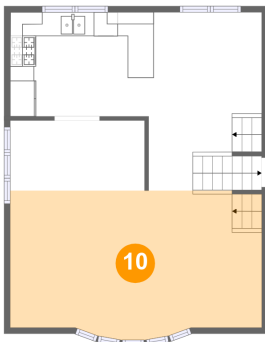
9 Floor 3 - Breakfast Nook



Dimensions: 9'0" x 9'0"
Area: 81 sq. ft
Counted as living area: Yes

Heated: Yes
Finished: Yes
Enclosed: Yes
Contiguous: Yes
Permitted: Yes
Wet space: No
Addition: No
Conversion: No

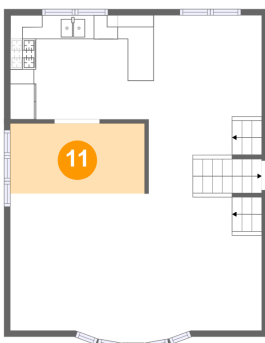
10 Floor 3 - Living Room



Dimensions: 20'11" x 12'5"
Area: 244 sq. ft
Counted as living area: Yes

Heated: Yes
Finished: Yes
Enclosed: Yes
Contiguous: Yes
Permitted: Yes
Wet space: No
Addition: No
Conversion: No

11 Floor 3 - Dining Area

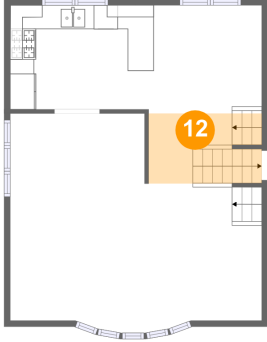


Dimensions: 11'2" x 5'10"
Area: 65 sq. ft
Counted as living area: Yes

Heated: Yes
Finished: Yes
Enclosed: Yes
Contiguous: Yes
Permitted: Yes
Wet space: No
Addition: No
Conversion: No

**42 Centrepark Drive, Blackburn Hamlet, Gloucester,
Ontario, Canada, K1B 3C1**

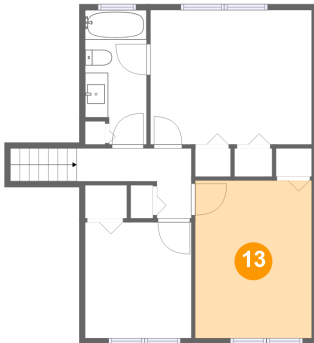
12 Floor 3 - Hall



Dimensions: 7'0" x 5'10"
Area: 54 sq. ft
Counted as living area: Yes

Heated: Yes
Finished: Yes
Enclosed: Yes
Contiguous: Yes
Permitted: Yes
Wet space: No
Addition: No
Conversion: No

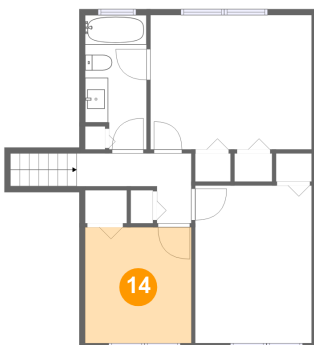
13 Floor 4 - Bedroom



Dimensions: 10'1" x 13'7"
Area: 137 sq. ft
Counted as living area: Yes

Heated: Yes
Finished: Yes
Enclosed: Yes
Contiguous: Yes
Permitted: Yes
Wet space: No
Addition: No
Conversion: No

14 Floor 4 - Bedroom

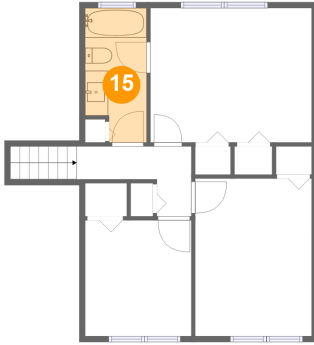


Dimensions: 9'2" x 10'0"
Area: 92 sq. ft
Counted as living area: Yes

Heated: Yes
Finished: Yes
Enclosed: Yes
Contiguous: Yes
Permitted: Yes
Wet space: No
Addition: No
Conversion: No

**42 Centrepark Drive, Blackburn Hamlet, Gloucester,
Ontario, Canada, K1B 3C1**

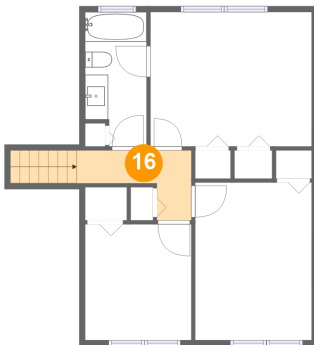
15 Floor 4 - Bath



Dimensions: 5'4" x 11'7"
Area: 57 sq. ft
Counted as living area: Yes

Heated: Yes
Finished: Yes
Enclosed: Yes
Contiguous: Yes
Permitted: Yes
Wet space: Yes
Addition: No
Conversion: No

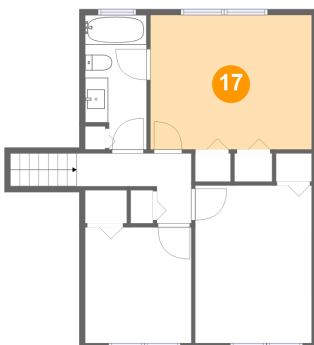
16 Floor 4 - Hall



Dimensions: 9'11" x 6'1"
Area: 54 sq. ft
Counted as living area: Yes

Heated: Yes
Finished: Yes
Enclosed: Yes
Contiguous: Yes
Permitted: Yes
Wet space: No
Addition: No
Conversion: No

17 Floor 4 - Primary Bedroom



Dimensions: 13'11" x 11'7"
Area: 162 sq. ft
Counted as living area: Yes

Heated: Yes
Finished: Yes
Enclosed: Yes
Contiguous: Yes
Permitted: Yes
Wet space: No
Addition: No
Conversion: No